

Retirees' Monthly Healthcare Costs

effective January 1, 2023



| To determine your rates for Retiree Medical Coverage | Use Rate Table |
|---|-------------------------------------|
| You have at least 20 years AACPS service working in a permanent position | A |
| You have at least 15 years and up to 20 years AACPS service working in a permanent position | B |
| You have at least 10 years and up to 15 years AACPS service working in a permanent position | C |
| You have less than 10 years AACPS service in a permanent position | Not eligible for retiree healthcare |

75% BOE Funding



| | Individual | Individual Medicare | Parent Child | Retiree Spouse | Retiree/ Spouse 1 Individual 1 Medicare | Retiree/ Spouse 2 Medicare | Family |
|--|-----------------|---------------------|-----------------|-----------------|---|----------------------------|-----------------|
| Medical Options | | | | | | | |
| BlueChoice HMO "Open Access" Plan | | | | | | | |
| 100% Premium | \$691.77 | \$599.76 | \$1,070.63 | \$1,600.07 | \$1,291.52 | \$1,199.51 | \$1,963.86 |
| Board's Share | \$518.83 | \$449.82 | \$802.97 | \$1,200.05 | \$968.64 | \$899.63 | \$1,472.89 |
| Retiree's Share | \$172.94 | \$149.94 | \$267.66 | \$400.02 | \$322.88 | \$299.88 | \$490.97 |
| BCBS Triple Choice "Open Access" Plan | | | | | | | |
| 100% Premium | \$730.75 | \$633.55 | \$1,349.44 | \$1,757.88 | \$1,364.30 | \$1,267.07 | \$2,130.74 |
| Board's Share | \$548.06 | \$475.16 | \$1,012.08 | \$1,318.41 | \$1,023.22 | \$950.30 | \$1,598.05 |
| Retiree's Share | \$182.69 | \$158.39 | \$337.36 | \$439.47 | \$341.08 | \$316.77 | \$532.69 |
| BCBS PPN | | | | | | | |
| 100% Premium | \$807.41 | Not Available | \$1,496.98 | \$1,949.78 | Not Available | Not Available | \$2,355.92 |
| Board's Share | \$605.56 | | \$1,122.73 | \$1,462.33 | | | \$1,766.94 |
| Retiree's Share | \$201.85 | | \$374.25 | \$487.45 | | | \$588.98 |
| CareFirst BCBS Medi-Comp Plan | | | | | | | |
| 100% Premium | Not Available | \$783.59 | Not Available | Not Available | Not Available | \$1,567.21 | Not Available |
| Board's Share | | \$587.69 | | | | \$1,175.41 | |
| Retiree's Share | | \$195.90 | | | | \$391.80 | |

Benefits are effective January 1, 2023.

Retirees' Monthly Healthcare Costs

effective January 1, 2023



50% BOE Funding

| | Individual | Individual Medicare | Parent Child | Retiree Spouse | Retiree/ Spouse 1 Individual 1 Medicare | Retiree/ Spouse 2 Medicare | Family |
|--|-----------------|---------------------|-----------------|-----------------|---|----------------------------------|-------------------|
| Medical Options | | | | | | | |
| BlueChoice HMO "Open Access" Plan | | | | | | | |
| 100% Premium | \$691.77 | \$599.76 | \$1,070.63 | \$1,600.07 | \$1,291.52 | \$1,199.51 | \$1,963.86 |
| Board's Share | \$345.88 | \$299.88 | \$535.31 | \$800.03 | \$645.76 | \$599.75 | \$981.93 |
| Retiree's Share | \$345.89 | \$299.88 | \$535.32 | \$800.04 | \$645.76 | \$599.76 | \$981.93 |
| BCBS Triple Choice "Open Access" Plan | | | | | | | |
| 100% Premium | \$730.75 | \$633.55 | \$1,349.44 | \$1,757.88 | \$1,364.30 | \$1,267.07 | \$2,130.74 |
| Board's Share | \$365.37 | \$316.77 | \$674.72 | \$878.94 | \$682.15 | \$633.53 | \$1,065.37 |
| Retiree's Share | \$365.38 | \$316.78 | \$674.72 | \$878.94 | \$682.15 | \$633.54 | \$1,065.37 |
| BCBS PPN | | | | | | | |
| 100% Premium | \$807.41 | Not Available | \$1,496.98 | \$1,949.78 | Not Available | Not Available | \$2,355.92 |
| Board's Share | \$403.70 | | \$748.49 | \$974.89 | | | \$1,177.96 |
| Retiree's Share | \$403.71 | | \$748.49 | \$974.89 | | | \$1,177.96 |
| CareFirst BCBS Medi-Comp Plan | | | | | | | |
| 100% Premium | Not Available | \$783.59 | Not Available | Not Available | Not Available | \$1,567.21 | Not Available |
| Board's Share | | \$391.79 | | | | \$783.60 | |
| Retiree's Share | | \$391.80 | | | | \$783.61 | |



25% BOE Funding

| | Individual | Individual Medicare | Parent Child | Retiree Spouse | Retiree/ Spouse 1 Individual 1 Medicare | Retiree/ Spouse 2 Medicare | Family |
|--|-----------------|---------------------|-------------------|-------------------|---|----------------------------------|-------------------|
| Medical Options | | | | | | | |
| BlueChoice HMO "Open Access" Plan | | | | | | | |
| 100% Premium | \$691.77 | \$599.76 | \$1,070.63 | \$1,600.07 | \$1,291.52 | \$1,199.51 | \$1,963.86 |
| Board's Share | \$172.94 | \$229.13 | \$267.66 | \$400.02 | \$402.06 | \$458.25 | \$490.96 |
| Retiree's Share | \$518.83 | \$370.63 | \$802.97 | \$1,200.05 | \$889.46 | \$741.26 | \$1,472.90 |
| BCBS Triple Choice "Open Access" Plan | | | | | | | |
| 100% Premium | \$730.75 | \$633.55 | \$1,349.44 | \$1,757.88 | \$1,364.30 | \$1,267.07 | \$2,130.74 |
| Board's Share | \$182.69 | \$231.77 | \$337.36 | \$439.47 | \$414.46 | \$463.51 | \$532.68 |
| Retiree's Share | \$548.06 | \$401.78 | \$1,012.08 | \$1,318.41 | \$949.84 | \$803.56 | \$1,598.06 |
| BCBS PPN | | | | | | | |
| 100% Premium | \$807.41 | Not Available | \$1,496.98 | \$1,949.78 | Not Available | Not Available | \$2,355.92 |
| Board's Share | \$201.85 | | \$374.24 | \$487.44 | | | \$588.98 |
| Retiree's Share | \$605.56 | | \$1,122.74 | \$1,462.34 | | | \$1,766.94 |
| CareFirst BCBS Medi-Comp Plan | | | | | | | |
| 100% Premium | Not Available | \$783.59 | Not Available | Not Available | Not Available | \$1,567.21 | Not Available |
| Board's Share | | \$274.72 | | | | \$549.47 | |
| Retiree's Share | | \$508.87 | | | | \$1,017.74 | |

Benefits are effective January 1, 2023.

Retirees' Monthly Healthcare Costs

effective January 1, 2023



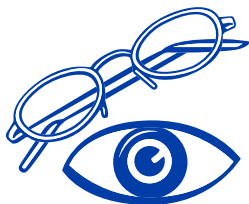
| To determine your rates for Retiree Dental Coverage | Use Rate Table |
|--|----------------|
| You have at least 20 years AACPS service working in a permanent position | D |
| You have at least 10 years AACPS service working in a permanent position | E |



| | Individual | Parent/Child | Retiree/Spouse | Family |
|--------------------------------|---------------|----------------|----------------|----------------|
| Dental Options | | | | |
| BCBS Traditional Dental | | | | |
| 100% Premium | \$38.59 | \$63.27 | \$79.83 | \$120.74 |
| Board's Share | \$28.94 | \$47.45 | \$59.87 | \$90.56 |
| Retiree's Share | \$9.65 | \$15.82 | \$19.96 | \$30.18 |
| BCBS Dental PPO | | | | |
| 100% Premium | \$35.90 | \$58.84 | \$74.26 | \$112.32 |
| Board's Share | \$26.93 | \$44.13 | \$55.70 | \$84.24 |
| Retiree's Share | \$8.97 | \$14.71 | \$18.56 | \$28.08 |
| Dental HMO | | | | |
| 100% Premium | \$16.99 | \$28.32 | \$33.98 | \$45.31 |
| Board's Share | \$12.74 | \$21.24 | \$25.49 | \$33.98 |
| Retiree's Share | \$4.25 | \$7.08 | \$8.49 | \$11.33 |



| | Individual | Parent/Child | Retiree/Spouse | Family |
|--------------------------------|----------------|----------------|----------------|-----------------|
| Dental Options | | | | |
| BCBS Traditional Dental | | | | |
| 100% Premium | \$38.59 | \$63.27 | \$79.83 | \$120.74 |
| Board's Share | \$0.00 | \$0.00 | \$0.00 | \$0.00 |
| Retiree's Share | \$38.59 | \$63.27 | \$79.83 | \$120.74 |
| BCBS Dental PPO | | | | |
| 100% Premium | \$35.90 | \$58.84 | \$74.26 | \$112.32 |
| Board's Share | \$0.00 | \$0.00 | \$0.00 | \$0.00 |
| Retiree's Share | \$35.90 | \$58.84 | \$74.26 | \$112.32 |
| Dental HMO | | | | |
| 100% Premium | \$16.99 | \$28.32 | \$33.98 | \$45.31 |
| Board's Share | \$0.00 | \$0.00 | \$0.00 | \$0.00 |
| Retiree's Share | \$16.99 | \$28.32 | \$33.98 | \$45.31 |



All retirees use this table for Vision Plan rates

| | Individual | Parent/Child | Retiree/Spouse | Family |
|---------------------------|---------------|---------------|----------------|---------------|
| Vision Plan | | | | |
| BCBS Select Vision | | | | |
| 100% Premium | \$4.03 | \$5.24 | \$7.08 | \$8.26 |
| Board's Share | \$0.00 | \$0.00 | \$0.00 | \$0.00 |
| Retiree's Share | \$4.03 | \$5.24 | \$7.08 | \$8.26 |

Benefits are effective January 1, 2023.