

## **EDUCATIONAL FACILITIES MASTER PLAN FOR ANNE ARUNDEL COUNTY PUBLIC SCHOOLS**

In 1982, the State of Maryland adopted rules, regulations, and procedures for the administration of the Public School Construction program requiring each local educational agency (LEA) to submit by July 1, 1982 and every year thereafter an annual update of an Education Facilities Master Plan. It is further required that each LEA's annual and six-year Capital Improvement Program be in accord with the current Educational Facilities Master Plan of record. This document represents the 35<sup>th</sup> Annual Educational Facilities Master Plan.

Included in the Educational Master Plan are the five following mandatory elements:

1. The goals, standards, and guidelines for school system facilities.
2. An inventory and evaluation of existing school facilities.
3. Population, enrollment data, and projections for the next ten years (including special education).
4. A listing and analysis of the facilities utilization and facilities needs for the next seven years, showing use of existing schools and future needs.
5. A community analysis, including a description of location by census tract, zoning, and proposed water/sewer as well as General Development or Master Plan goals and objectives.

The first mandatory item (goals, standards, and guidelines for the school system facilities) is presented in the appendices as a compilation of existing Anne Arundel County Public Schools policies and guidelines relating to school facilities.

Mandatory items 2 through 5 (facilities inventory, Form 101; projections, Form 102A; utilization analysis, Form 102B; and community analysis) are shown for each of the 12 high school feeder systems. **Redistricting, grade reorganization, and capital improvements are highlighted within each feeder system where appropriate.**

## **CAPITAL IMPROVEMENT PROGRAM**

The FY 2017 Capital Budget request reflects continuing countywide space constraints. These constraints are especially acute at the elementary school level. In the high schools the long-term outlook is for sufficient overcrowding coupled with the increasing obsolescence of some older schools. These factors combined are behind the CIP's including three new high school construction projects.

## **REDISTRICTING**

Redistricting or attendance boundary adjustments are studied every year. By policy, the Board of Education must conduct annual reviews of school utilization, possible attendance boundary changes and possible school closings (Appendices C & D).

Realignment models are developed through the use of computer-generated attendance patterns. Many options for each attendance area can be evaluated and may be used as short-term solutions while awaiting additional facilities or an increase of capacity by some other means.

The Board of Education took no action regarding redistricting that will take effect in the coming school year, nor are there any redistricting actions remaining to be implemented as a result of earlier actions.

## **LIMITATIONS**

In assessing the future needs for school facilities in Anne Arundel County, it must be recognized that there are variables which cannot be controlled. These variables are listed below as limitations inherent in this type of long range comprehensive planning:

1. Projecting population trends and enrollments is an inexact science. The smaller the geographic unit, the less exact the calculation. Additionally, longer-term projections are less reliable than those covering the short-term.
2. Program needs change and it is difficult to predict those needs very far into the future.
3. Recommendations for renovation, addition, and new construction are subject to State Interagency Committee for Public School Construction priority and State and County funding availability.

## **SOURCE OF DATA**

The source of data contained in the Facilities Master Plan is from records maintained by the Facilities Division and the Department of Instruction of Anne Arundel County Public Schools.

Data from other sources are appropriately noted.

1. United States Census Bureau, Census tracts from Anne Arundel County. (2010)
2. Anne Arundel County, Office of Planning and Zoning, Zoning Maps. (2015)
3. Anne Arundel County Master Plan for Water Supply and Sewerage Systems. (2013)
4. Public School Construction Program, Administrative Procedures Guide. (2013)
5. MGT of America Strategic Facilities Utilization Master Plan. (2015)
6. General Development Plan for Anne Arundel County. (2009)

## **Actual Enrollment Patterns**

In order to better understand dynamic enrollment changes in certain Anne Arundel County Public Schools, the 9/12 actual enrollment of each school was compared to its 9/15 actual enrollment. Grouped then by feeder system and program level (high, middle, elementary, and kindergarten), rates of enrollment change were determined.

Our total elementary school population increased by 4.5% between 9/12 and 9/15.

The total elementary school population was influenced by a natural increase in the number of elementary students as well as by large numbers of new families moving into the county. The current economic climate also has led some families to remove their children from private schools and homeschooled environments in favor of enrolling them in public school. Additional factors behind increases in elementary school enrollments: 1) Young adults with children of their own returning home to live with their own parents, and 2) Increases in the number of housing units containing more than one household. (Some schools report 3 and even 4 families living in a single house or apartment.)

Recent mandates have produced an increase in the number of Pre-K seats that must be available to eligible students. The availability of seats abetted a 3% gain in Pre-K enrollment between 9/12 and 9/15.

Middle school growth slightly exceeds that of the elementary schools: up by 5.0% between 9/12 and 9/15. High school enrollment has remained stable countywide during the same period although some areas of the county have seen significant gains – Annapolis and Meade High Schools in particular have been growing rapidly. Schools with magnet programs are experiencing enrollment increases by and large; enrollment increases are mitigated by corresponding decreases in enrollment by non-program participants.

Enrollment changes throughout the county will continue to be closely monitored. Patterns will be identified that emerge over time and involve groups of related schools. These patterns will be critical contextual variables in redistricting decisions, determinations regarding the adequacy of facilities, and in the identification of capital project needs. The level of proposed residential development that has been approved in the Arundel, Glen Burnie, Meade, and Northeast feeder zones will translate into significant enrollment gains in the coming years. Several very large residential development projects are underway in these areas, and combined with the demographic shifts described above there will be significant enrollment increases in the future.

**ACTUAL ENROLLMENT PATTERNS**  
**9/30/12 VS. 9/30/15**  
**BY FEEDER SYSTEM**

School	Actual 09-30-12	Actual 09-30-15	Difference*	Percentage of Increase or Decrease
<b>ANNAPOLIS FEEDER SYSTEM</b>				
High (9-12)	1,608	1,911	303	19%
Middle (6-8)	1,374	1,652	278	20%
Elementary (1-5)	2,875	2,997	122	4%
Kindergarten & PreK	1,044	936	-108	-10%
<b>ARUNDEL FEEDER SYSTEM</b>				
High (9-12)	1,949	2,043	94	5%
Middle (6-8)	860	980	120	14%
Elementary (1-5)	2,830	2,962	132	5%
Kindergarten & PreK	584	693	109	19%
<b>BROADNECK FEEDER SYSTEM</b>				
High (9-12)	2,182	2,061	-121	-6%
Middle (6-8)	1,522	1,510	-12	-1%
Elementary (1-5)	2,477	2,435	-42	-2%
Kindergarten & PreK	471	469	-2	0%
<b>CHESAPEAKE FEEDER SYSTEM</b>				
High (9-12)	1,594	1,404	-190	-12%
Middle (6-8)	1,080	1,040	-40	-4%
Elementary (1-5)	1,882	1,800	-82	-4%
Kindergarten & PreK	391	376	-15	-4%
<b>GLEN BURNIE FEEDER SYSTEM</b>				
High (9-12)	1,963	1,892	-71	-4%
Middle (6-8)	1,333	1,373	40	3%
Elementary (1-5)	2,731	2,848	117	4%
Kindergarten & PreK	904	781	-123	-14%

**ACTUAL ENROLLMENT PATTERNS**  
**9/30/12 VS. 9/30/15**  
**BY FEEDER SYSTEM**

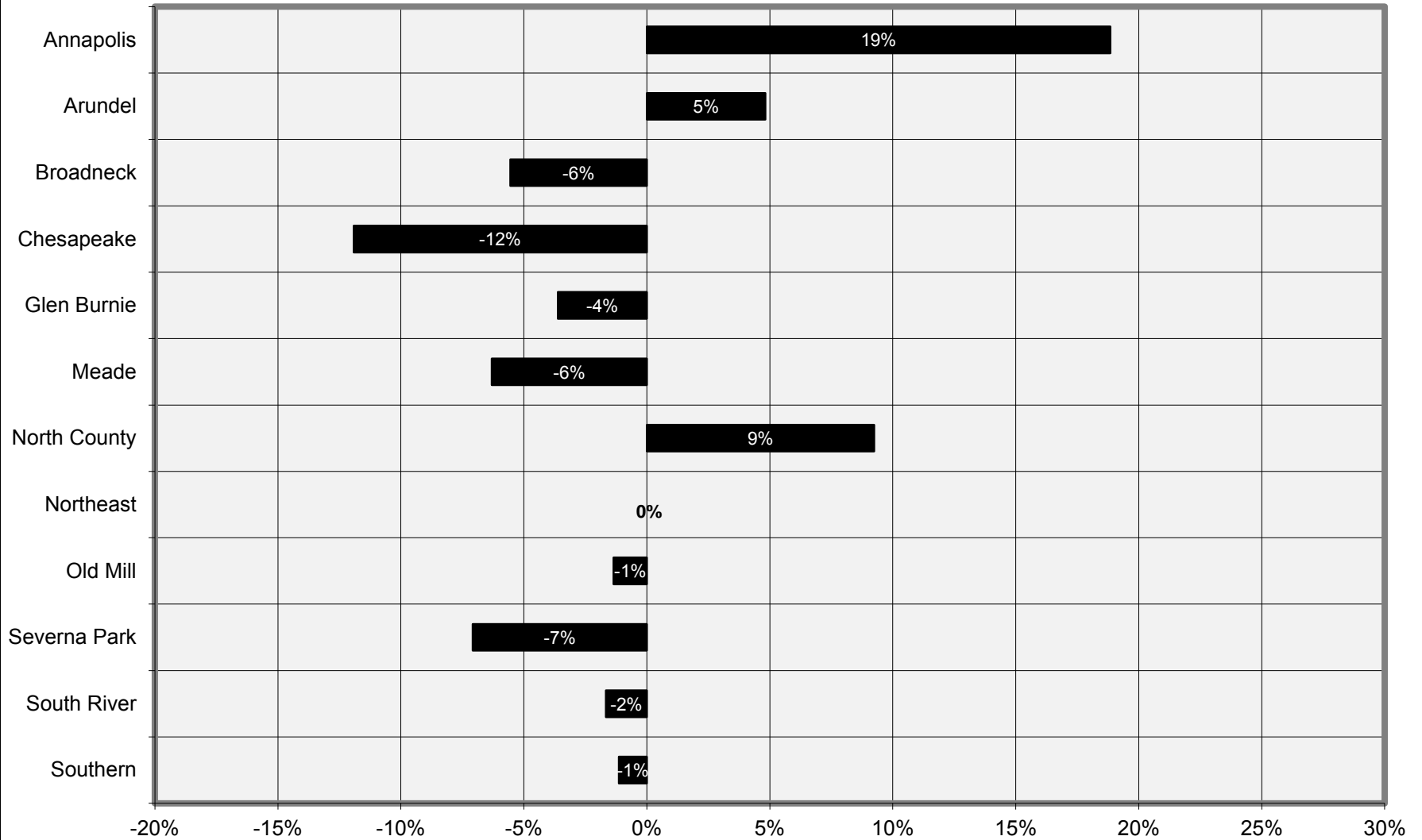
School	Actual 09-30-12	Actual 09-30-15	Difference*	Percentage of Increase or Decrease
<b>MEADE FEEDER SYSTEM</b>				
High (9-12)	2,189	2,051	-138	-6%
Middle (6-8)	1,712	1,634	-78	-5%
Elementary (1-5)	3,846	3,682	-164	-4%
Kindergarten & PreK	1,252	1,074	-178	-14%
<b>NORTH COUNTY FEEDER SYSTEM</b>				
High (9-12)	1,883	2,057	174	9%
Middle (6-8)	1,371	1,695	324	24%
Elementary (1-5)	2,257	2,570	313	14%
Kindergarten & PreK	765	732	-33	-4%
<b>NORTHEAST FEEDER SYSTEM</b>				
High (9-12)	1,347	1,353	6	0%
Middle (6-8)	918	949	31	3%
Elementary (1-5)	1,698	1,750	52	3%
Kindergarten & PreK	483	438	-45	-9%
<b>OLD MILL FEEDER SYSTEM</b>				
High (9-12)	2,154	2,125	-29	-1%
Middle (6-8)	1,596	1,794	198	12%
Elementary (1-5)	2,669	2,960	291	11%
Kindergarten & PreK	688	653	-35	-5%
<b>SEVERNA PARK FEEDER SYSTEM</b>				
High (9-12)	1,936	1,799	-137	-7%
Middle (6-8)	1,443	1,431	-12	-1%
Elementary (1-5)	2,267	2,303	36	2%
Kindergarten & PreK	475	475	0	0%

**ACTUAL ENROLLMENT PATTERNS**  
**9/30/12 VS. 9/30/15**  
**BY FEEDER SYSTEM**

School	Actual 09-30-12	Actual 09-30-15	Difference*	Percentage of Increase or Decrease
<b>SOUTH RIVER FEEDER SYSTEM</b>				
High (9-12)	2,228	2,191	-37	-2%
Middle (6-8)	2,207	2,219	12	1%
Elementary (1-5)	2,644	2,874	230	9%
Kindergarten	614	546	-68	-11%
<b>SOUTHERN FEEDER SYSTEM</b>				
High (9-12)	1,059	1,047	-12	-1%
Middle (6-8)	793	763	-30	-4%
Elementary (1-5)	1,251	1,254	3	0%
Kindergarten & PreK	343	293	-50	-15%

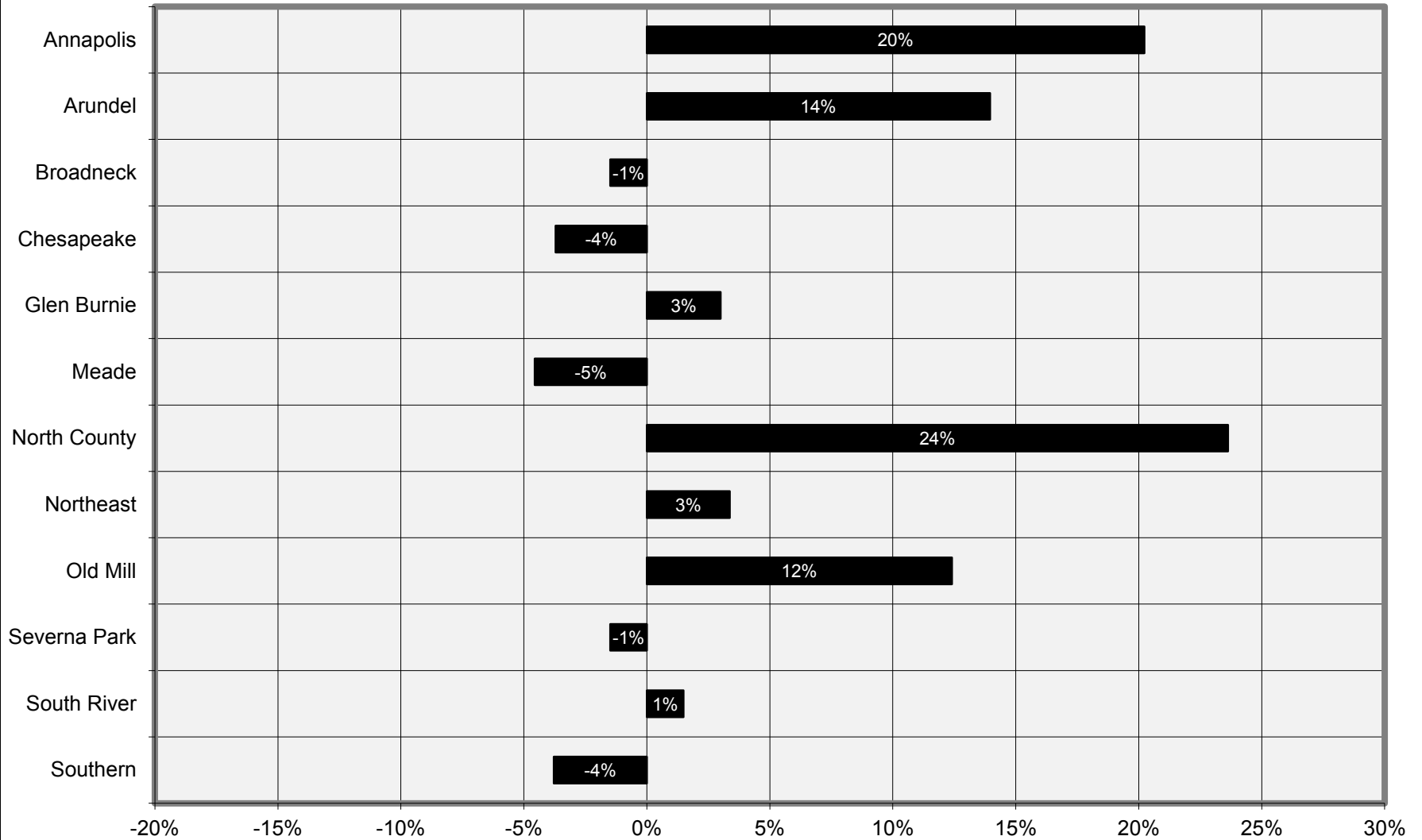
**\*Note: A positive difference indicates that more students were enrolled in 2015 than in 2012.  
A negative difference indicates that fewer students were enrolled in 2015 than in 2012.**

## September 2012 - September 2015 ENROLLMENT CHANGE HIGH SCHOOL (9-12 GRADES)

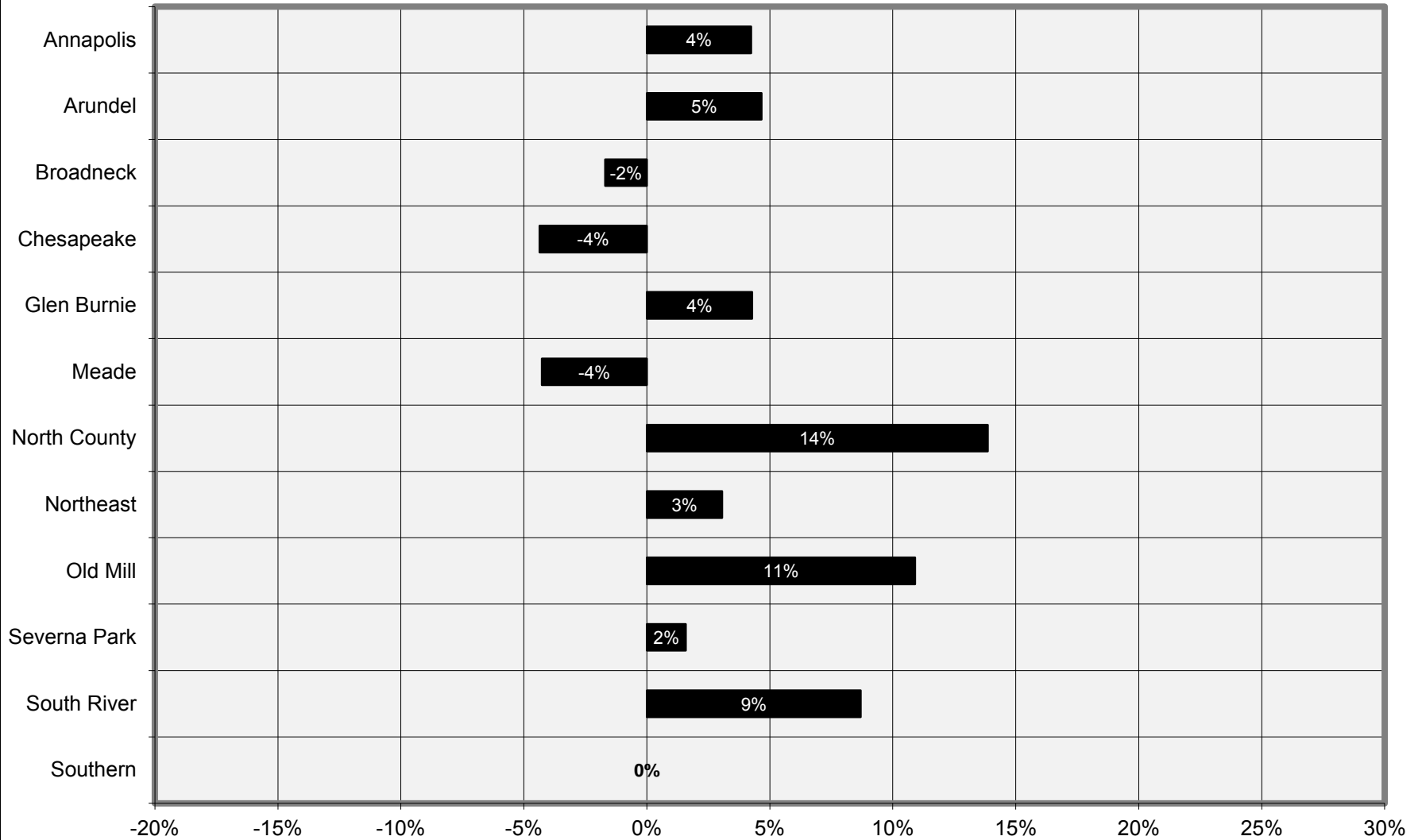




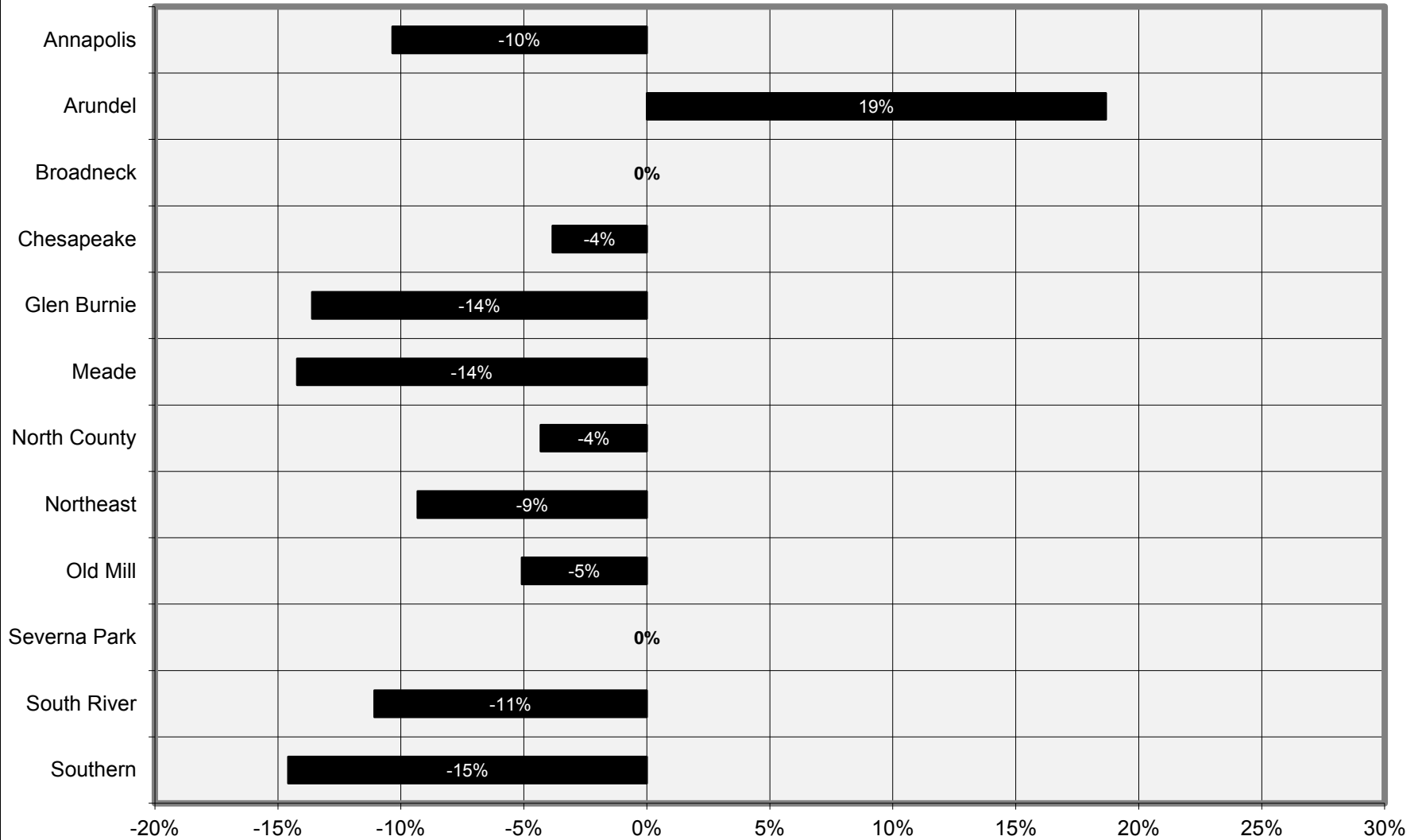
## September 2012 - September 2015 ENROLLMENT CHANGE MIDDLE (6-8 GRADES)



## September 2012 - September 2015 ENROLLMENT CHANGE ELEMENTARY (1-5 GRADES)



## September 2012 - September 2015 ENROLLMENT CHANGE PRE K & KINDERGARTEN

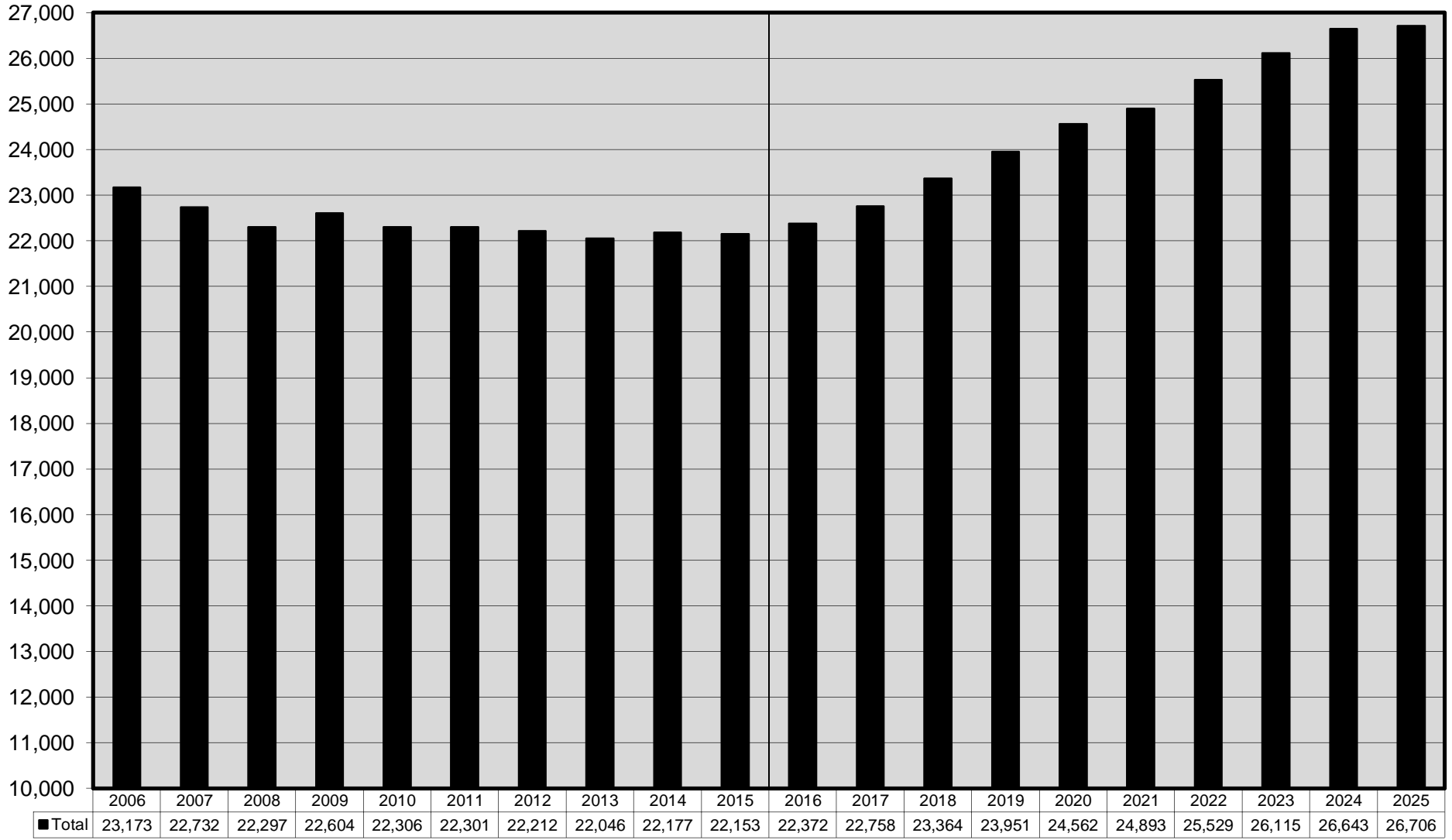


**ACTUAL SEPTEMBER 2006-2015 ENROLLMENT AND PROJECTED 2016-2025**

											PROJECTED ENROLLMENT									
	2006	2007	2008	2009	2010	2011	2012	2013	2014	2015	2016	2017	2018	2019	2020	2021	2022	2023	2024	2025
Kindergarten	4,812	5,258	5,406	5,667	5,717	5,909	6,320	6,359	6,288	6,318	6,279	6,259	6,233	6,222	6,302	6,418	6,424	6,402	6,368	6,366
Grade 1	5,303	5,235	5,541	5,679	5,864	5,777	6,074	6,425	6,429	6,351	6,347	6,256	6,215	6,195	6,295	6,389	6,457	6,449	6,454	6,436
Grade 2	5,183	5,385	5,328	5,581	5,763	5,911	5,852	6,040	6,463	6,426	6,385	6,383	6,346	6,243	6,251	6,323	6,419	6,458	6,465	6,462
Grade 3	5,348	5,234	5,486	5,465	5,706	5,837	5,943	5,916	6,085	6,471	6,500	6,515	6,472	6,386	6,363	6,319	6,405	6,467	6,531	6,535
Grade 4	5,294	5,393	5,355	5,531	5,494	5,717	5,892	5,949	5,950	6,111	6,528	6,622	6,599	6,490	6,436	6,367	6,338	6,387	6,454	6,465
Grade 5	5,399	5,375	5,457	5,472	5,670	5,571	5,791	5,907	5,970	5,941	6,152	6,704	6,706	7,004	6,593	6,500	6,413	6,358	6,413	6,420
<b>Total Elementary (K-5)</b>	<b>31,339</b>	<b>31,880</b>	<b>32,573</b>	<b>33,395</b>	<b>34,214</b>	<b>34,722</b>	<b>35,872</b>	<b>36,596</b>	<b>37,185</b>	<b>37,618</b>	<b>38,191</b>	<b>38,739</b>	<b>38,571</b>	<b>38,540</b>	<b>38,240</b>	<b>38,316</b>	<b>38,456</b>	<b>38,521</b>	<b>38,685</b>	<b>38,684</b>
Ungraded in ECI	180	179	225	212	187	265	265	195	180	203	219	219	219	219	219	219	219	219	219	219
Ungraded in PreKindergarten	940	1,266	1,291	1,304	1,338	1,474	1,763	1,818	1,777	1,809	1,851	1,851	1,851	1,851	1,851	1,851	1,851	1,851	1,851	1,851
<b>Total Elementary (Ungraded)</b>	<b>1,120</b>	<b>1,445</b>	<b>1,516</b>	<b>1,516</b>	<b>1,525</b>	<b>1,739</b>	<b>2,028</b>	<b>2,013</b>	<b>1,957</b>	<b>2,012</b>	<b>2,070</b>	<b>2,070</b>	<b>2,070</b>	<b>2,070</b>	<b>2,070</b>	<b>2,070</b>	<b>2,070</b>	<b>2,070</b>	<b>2,070</b>	<b>2,070</b>
Ungraded in Special Ctr. ECI & PK	146	161	168	183	145	153	154	154	123	158	158	158	158	158	158	158	158	158	158	158
Ungraded in Special Ctr. K-5	128	100	96	99	91	145	155	141	161	159	159	159	159	159	159	159	159	159	159	159
<b>Total Elementary Special Ctr.</b>	<b>274</b>	<b>261</b>	<b>264</b>	<b>282</b>	<b>236</b>	<b>298</b>	<b>309</b>	<b>295</b>	<b>284</b>	<b>317</b>	<b>317</b>	<b>317</b>	<b>317</b>	<b>317</b>	<b>317</b>	<b>317</b>	<b>317</b>	<b>317</b>	<b>317</b>	<b>317</b>
<b>TOTAL ELEM (PreK-5)</b>	<b>32,733</b>	<b>33,586</b>	<b>34,353</b>	<b>35,193</b>	<b>35,975</b>	<b>36,759</b>	<b>38,209</b>	<b>38,904</b>	<b>39,426</b>	<b>39,947</b>	<b>40,578</b>	<b>41,126</b>	<b>40,958</b>	<b>40,927</b>	<b>40,627</b>	<b>40,703</b>	<b>40,843</b>	<b>40,908</b>	<b>41,072</b>	<b>41,071</b>
Grade 6	5,565	5,442	5,380	5,537	5,562	5,591	5,559	5,757	5,867	5,941	5,970	6,288	6,742	6,745	6,990	6,672	6,705	6,639	6,585	6,636
Grade 7	5,575	5,580	5,487	5,462	5,604	5,566	5,632	5,588	5,799	5,885	5,969	6,040	6,387	6,735	6,820	6,929	6,769	6,750	6,667	6,636
Grade 8	5,541	5,539	5,605	5,503	5,530	5,531	5,587	5,563	5,551	5,794	5,893	6,026	6,132	6,358	6,588	6,842	6,875	6,810	6,705	6,687
<b>TOTAL MIDDLE (6-8)</b>	<b>16,681</b>	<b>16,561</b>	<b>16,472</b>	<b>16,502</b>	<b>16,696</b>	<b>16,688</b>	<b>16,778</b>	<b>16,908</b>	<b>17,217</b>	<b>17,620</b>	<b>17,832</b>	<b>18,354</b>	<b>19,261</b>	<b>19,838</b>	<b>20,398</b>	<b>20,443</b>	<b>20,349</b>	<b>20,199</b>	<b>19,957</b>	<b>19,959</b>
Grade 9	6,730	6,255	6,275	6,313	6,131	6,012	6,005	5,917	5,972	5,884	6,016	6,182	6,158	6,275	6,532	6,778	6,991	6,838	6,833	6,837
Grade 10	5,525	6,010	5,796	5,996	5,862	5,816	5,737	5,675	5,704	5,727	5,700	5,835	6,042	5,959	6,060	6,267	6,601	6,738	6,659	6,656
Grade 11	5,762	5,125	5,584	5,431	5,582	5,549	5,529	5,510	5,553	5,459	5,513	5,534	5,839	6,105	6,087	6,065	6,140	6,583	6,731	6,683
Grade 12	5,156	5,342	4,642	4,864	4,731	4,924	4,941	4,944	4,948	5,083	5,143	5,207	5,325	5,612	5,883	5,783	5,797	5,956	6,420	6,530
<b>TOTAL HIGH (9-12)</b>	<b>23,173</b>	<b>22,732</b>	<b>22,297</b>	<b>22,604</b>	<b>22,306</b>	<b>22,301</b>	<b>22,212</b>	<b>22,046</b>	<b>22,177</b>	<b>22,153</b>	<b>22,372</b>	<b>22,758</b>	<b>23,364</b>	<b>23,951</b>	<b>24,562</b>	<b>24,893</b>	<b>25,529</b>	<b>26,115</b>	<b>26,643</b>	<b>26,706</b>
Evening High School Ungraded	199	213	212	201	196	144	166	166	192	201	201	201	201	201	201	201	201	201	201	201
<b>Total Ungraded</b>	<b>199</b>	<b>213</b>	<b>212</b>	<b>201</b>	<b>196</b>	<b>144</b>	<b>166</b>	<b>166</b>	<b>192</b>	<b>201</b>	<b>201</b>	<b>201</b>	<b>201</b>	<b>201</b>	<b>201</b>	<b>201</b>	<b>201</b>	<b>201</b>	<b>201</b>	<b>201</b>
Ungraded in Special Ctr. Sec.	325	313	324	282	308	411	405	476	506	466	305	305	305	305	305	305	305	305	305	305
<b>Total Secondary Special Ctr.</b>	<b>325</b>	<b>313</b>	<b>324</b>	<b>282</b>	<b>308</b>	<b>411</b>	<b>405</b>	<b>476</b>	<b>506</b>	<b>466</b>	<b>305</b>	<b>305</b>	<b>305</b>	<b>305</b>	<b>305</b>	<b>305</b>	<b>305</b>	<b>305</b>	<b>305</b>	<b>305</b>
<b>Total Secondary (6-12)</b>	<b>39,854</b>	<b>39,293</b>	<b>38,769</b>	<b>39,106</b>	<b>39,002</b>	<b>38,989</b>	<b>38,990</b>	<b>38,954</b>	<b>39,394</b>	<b>39,773</b>	<b>40,204</b>	<b>41,112</b>	<b>42,625</b>	<b>43,789</b>	<b>44,960</b>	<b>45,336</b>	<b>45,878</b>	<b>46,314</b>	<b>46,600</b>	<b>46,665</b>
<b>TOTAL ALL SECONDARY</b>	<b>40,378</b>	<b>39,819</b>	<b>39,305</b>	<b>39,589</b>	<b>39,506</b>	<b>39,544</b>	<b>39,561</b>	<b>39,596</b>	<b>40,092</b>	<b>40,440</b>	<b>40,710</b>	<b>41,618</b>	<b>43,131</b>	<b>44,295</b>	<b>45,466</b>	<b>45,842</b>	<b>46,384</b>	<b>46,820</b>	<b>47,106</b>	<b>47,171</b>
<b>TOTAL (K-12)</b>	<b>71,845</b>	<b>71,799</b>	<b>71,974</b>	<b>73,083</b>	<b>73,811</b>	<b>74,411</b>	<b>75,588</b>	<b>76,333</b>	<b>77,438</b>	<b>78,217</b>	<b>79,060</b>	<b>80,516</b>	<b>81,861</b>	<b>82,994</b>	<b>83,865</b>	<b>84,317</b>	<b>84,999</b>	<b>85,500</b>	<b>85,950</b>	<b>86,014</b>
<b>TOTAL ENROLLMENT</b>	<b>73,111</b>	<b>73,405</b>	<b>73,658</b>	<b>74,782</b>	<b>75,481</b>	<b>76,303</b>	<b>77,770</b>	<b>78,500</b>	<b>79,518</b>	<b>80,387</b>	<b>81,288</b>	<b>82,744</b>	<b>84,089</b>	<b>85,222</b>	<b>86,093</b>	<b>86,545</b>	<b>87,227</b>	<b>87,728</b>	<b>88,178</b>	<b>88,242</b>

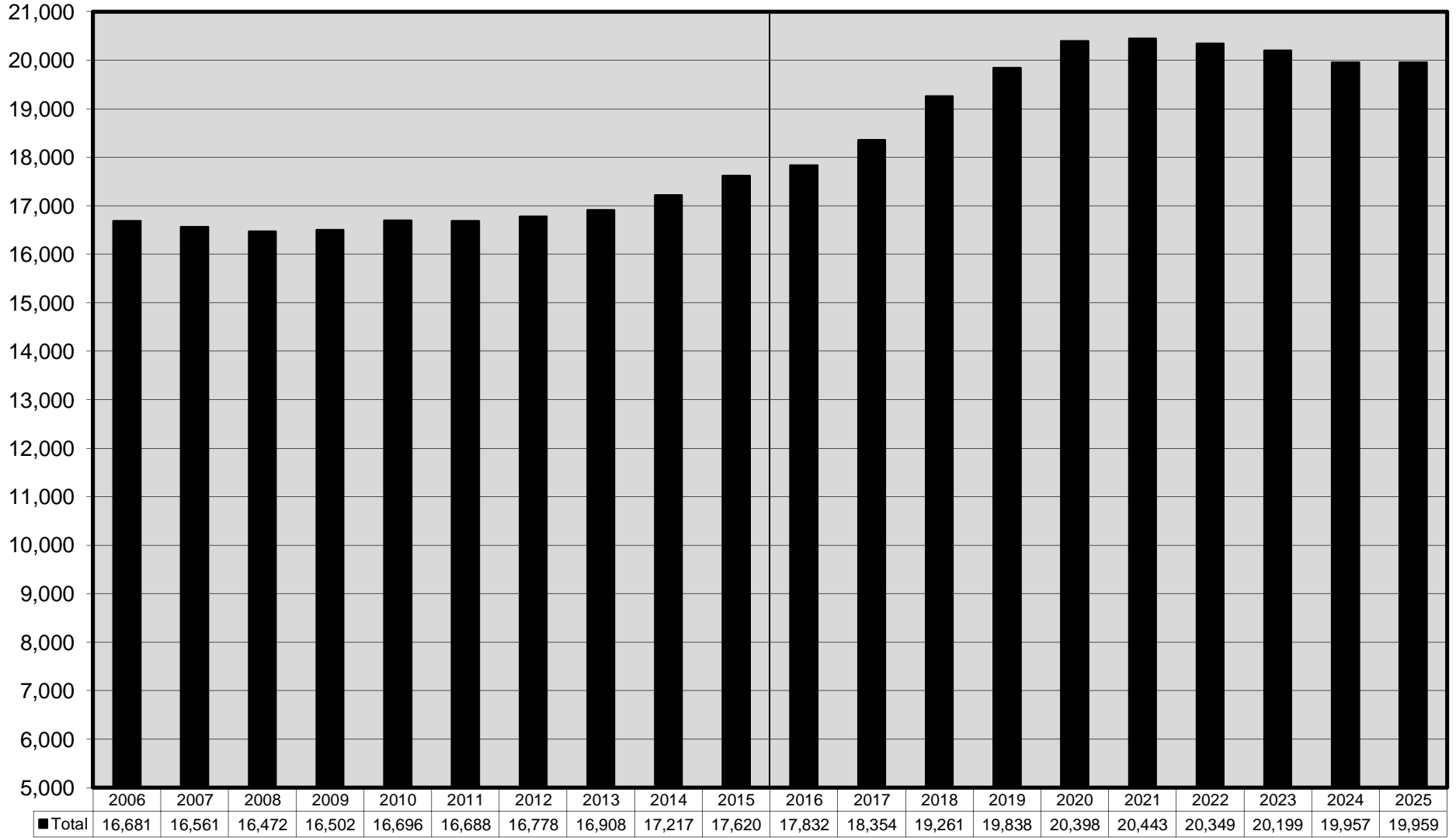
# HIGH SCHOOL ENROLLMENT

## 2006-2015 ACTUAL AND 2016-2025 PROJECTED



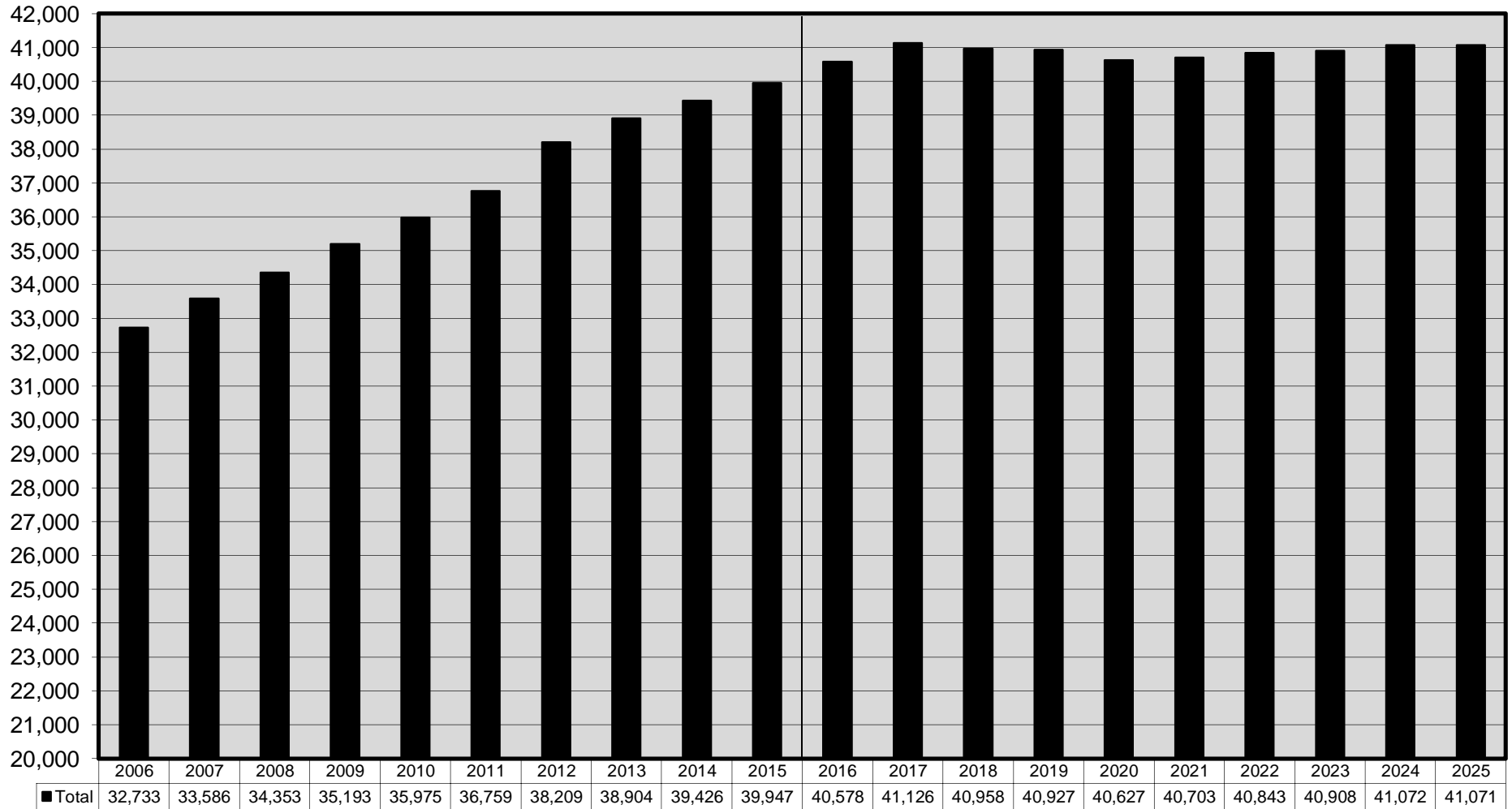
# MIDDLE SCHOOL ENROLLMENT

## 2006-2015 ACTUAL AND 2016-2025 PROJECTED



# ELEMENTARY SCHOOL ENROLLMENT

## 2006-2015 ACTUAL AND 2016-2025 PROJECTED



■ Total	32,733	33,586	34,353	35,193	35,975	36,759	38,209	38,904	39,426	39,947	40,578	41,126	40,958	40,927	40,627	40,703	40,843	40,908	41,072	41,071
---------	--------	--------	--------	--------	--------	--------	--------	--------	--------	--------	--------	--------	--------	--------	--------	--------	--------	--------	--------	--------

# TOTAL ENROLLMENT

## 2006-2015 ACTUAL AND 2016-2025 PROJECTED

