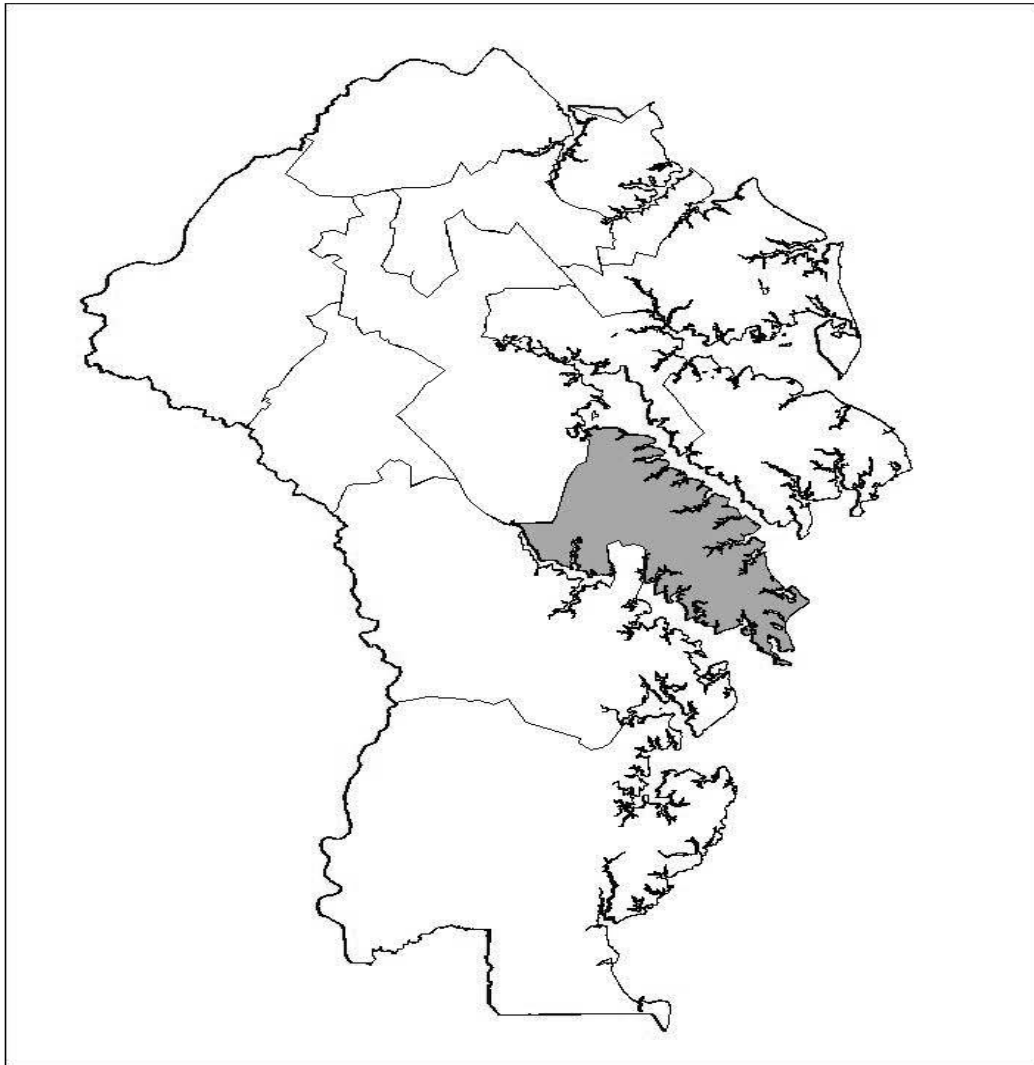


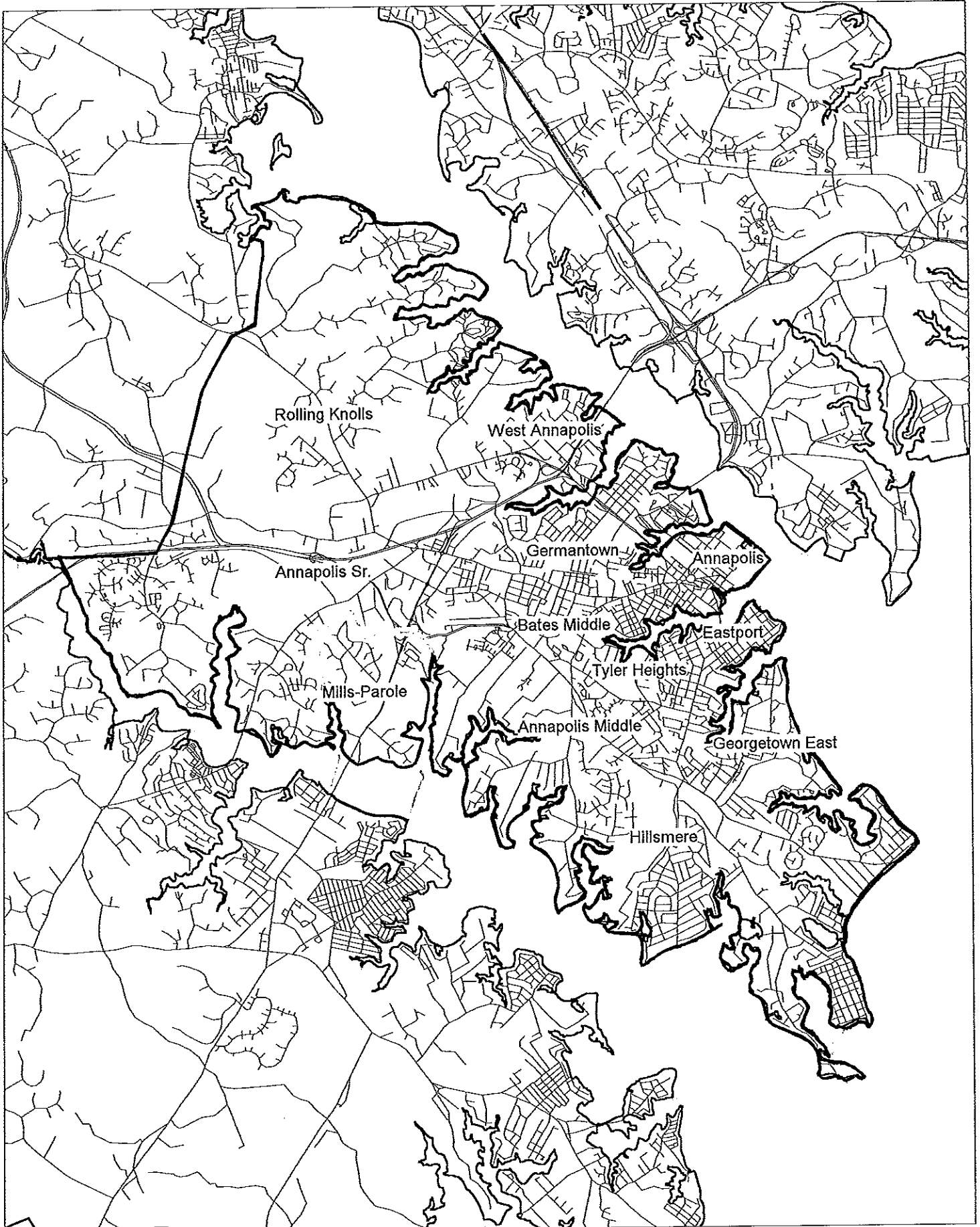


# ANNAPOLIS FEEDER SYSTEM



Annapolis High School (9-12)  
Annapolis Middle (6-8)  
Eastport Elementary (PreK-5)  
Georgetown East Elementary (PreK-5)  
Hillsmere Elementary (PreK-5)  
Tyler Heights Elementary (PreK-5)

Annapolis High School (9-12)  
Bates Middle (6-8)  
Annapolis Elementary (PreK-5)  
Germantown Elementary (PreK-5)  
Mills-Parole Elementary (PreK-5)  
Rolling Knolls Elementary (PreK-5)  
West Annapolis Elementary (K-5)



# FACILITIES/ENROLLMENT COMPARISON ANNAPOLIS FEEDER SYSTEM

PRESENT AND PROJECTED FTE ENROLLMENT													
Existing School	State Capacity	Grades Served	Actual										
			2010	2011	2012	2013	2014	2015	2016	2017	2018	2019	2020
<b>Annapolis High ▲</b>	1,739	9-12	1,544	1,569	1,551	1,515	1,512	1,510	1,522	1,545	1,564	1,567	1,574
<b>Annapolis Middle ▲</b>	1,495	6-8	599	624	629	631	644	655	652	648	653	666	669
<b>Bates Middle 1 ▲</b>	815	6-8	644	742	748	751	768	780	774	769	777	792	795
<b>Annapolis Elem 2 ▲*</b>	271	PreK-5	203	211	221	221	230	222	225	225	224	223	223
<b>Eastport Elem ▲</b>	270	PreK-5	237	249	268	277	293	295	297	298	296	295	295
<b>Georgetown East Elem ▲</b>	460	PreK-5	331	330	324	322	318	300	303	304	303	302	302
<b>Germentown Elem 3 ▲</b>	388	PreK-5	471	550	576	596	582	595	597	600	601	604	609
<b>Hillsmere Elem 4 ▲</b>	476	PreK-5	435	457	486	490	508	515	521	523	524	526	529
<b>Mills-Parole Elem 5 ▲</b>	401	PreK-5	507	520	545	554	566	549	554	556	557	560	565
<b>Rolling Knolls Elem 6 ▲</b>	362	PreK-5	424	429	446	455	456	456	462	465	466	468	470
<b>Tyler Heights Elem 7 ▲</b>	382	PreK-5	432	472	523	554	591	611	616	619	620	624	629
<b>West Annapolis Elem 8 ▲</b>	274	K-5	279	277	270	264	244	233	234	234	233	232	232
<b>TOTALS</b>	<b>7,333</b>		<b>6,106</b>	<b>6,430</b>	<b>6,587</b>	<b>6,630</b>	<b>6,712</b>	<b>6,721</b>	<b>6,757</b>	<b>6,786</b>	<b>6,818</b>	<b>6,859</b>	<b>6,892</b>
<b>ELEM TOTALS</b>	<b>3,284</b>		<b>3,319</b>	<b>3,495</b>	<b>3,659</b>	<b>3,733</b>	<b>3,788</b>	<b>3,776</b>	<b>3,809</b>	<b>3,824</b>	<b>3,824</b>	<b>3,834</b>	<b>3,854</b>

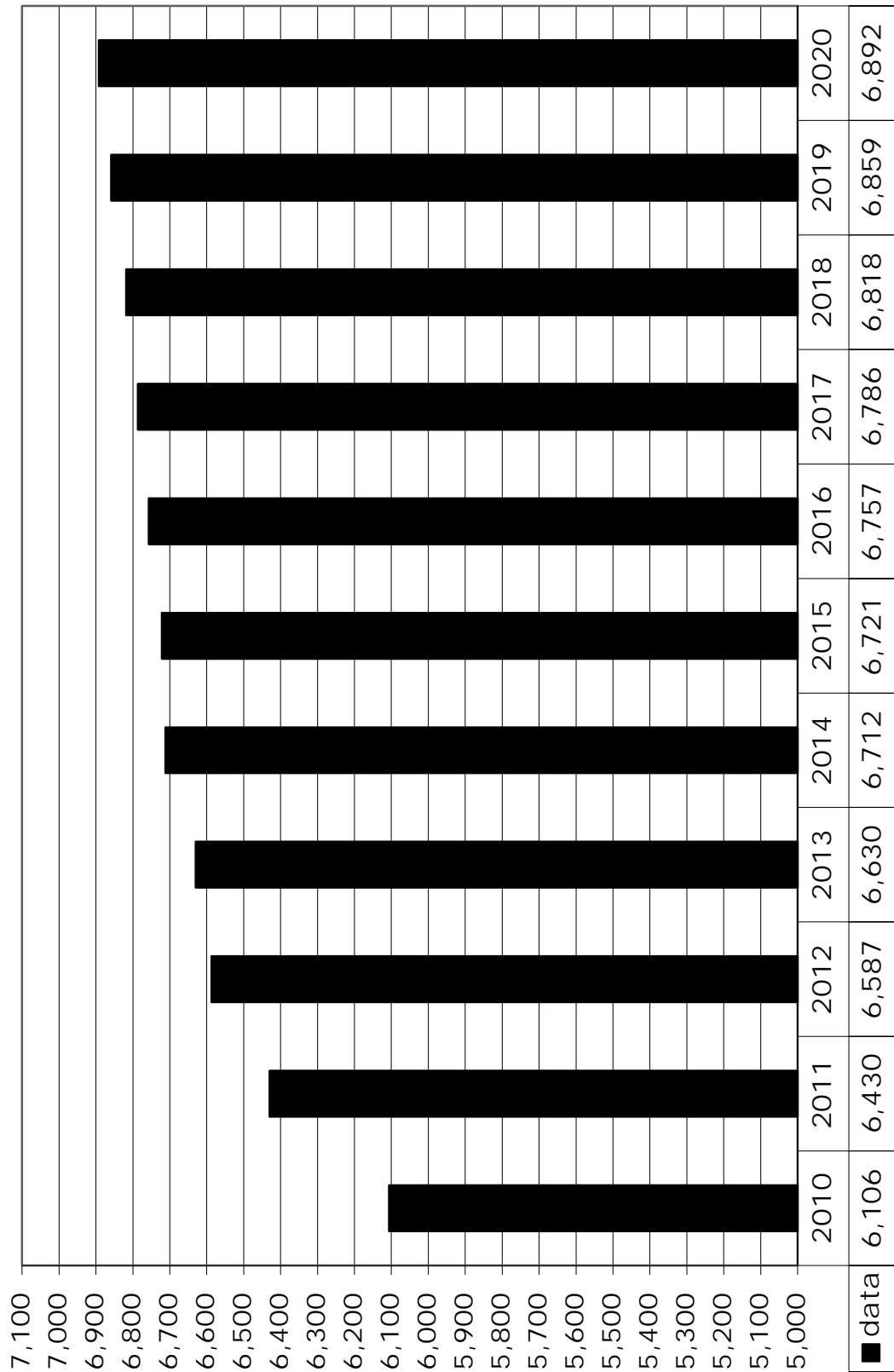
▲ = Denotes school is located in Priority Funding Area

- 1. Feasibility Study FY17
- 2. Under Design
- 3. Under Construction
- 4. Feasibility Study FY15
- 5. Feasibility Study FY12
- 6. Feasibility Study FY12
- 7. Feasibility Study FY17
- 8. Feasibility Study FY12

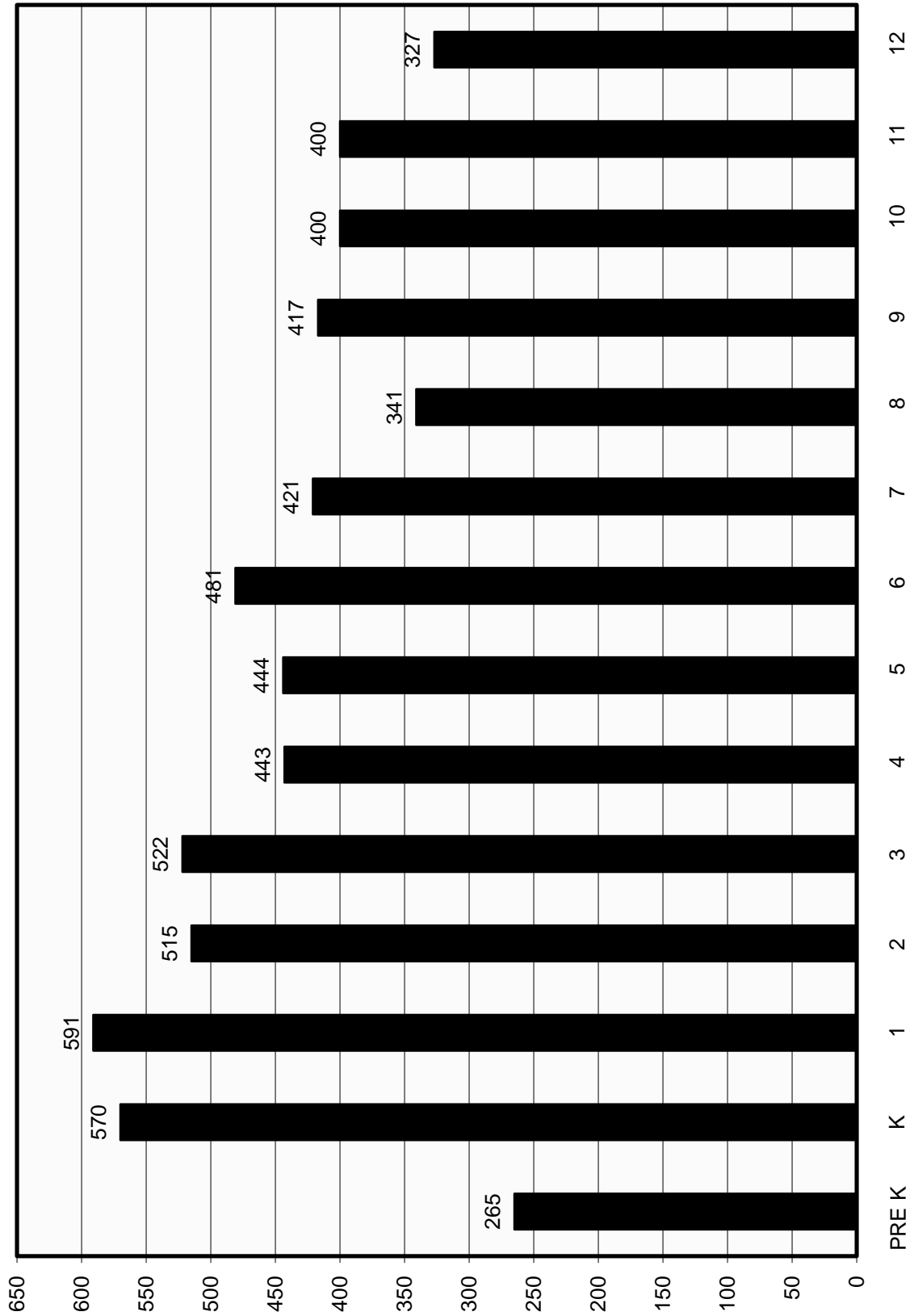
\*North Severn Community attends Annapolis Elementary, Severn River Middle, and Broadneck Senior.

# ANNAPOLIS FEEDER SYSTEM ENROLLMENT

## 2010 Actual, 2011-2020 Projected



# ANNAPOLIS FEEDER SYSTEM ACTUAL SEPTEMBER 2010 ENROLLMENT



# Annapolis High School

**Geographic/Demographic Components:**<sup>1</sup> Annapolis High School is located within census tracts 7024, 7025, 7026, 7027, 7061.01, 7063, 7064, 7065, 7066 and 7067.

**Zoning:**<sup>2</sup> A large portion of the Annapolis High attendance area is the incorporated City of Annapolis which has independent zones for commercial, residential, conservation, and maritime service zoning. The area south of Forest Drive, located within the Anne Arundel County jurisdiction, is zoned primarily R-2, with higher density R-15 and R-22 zoning existing in the Bembe Beach and Sparrows Beach communities. The county sub-area, located west of Route 2 throughout the Rolling Knolls area, is zoned primarily R-1 and R-2, with R-5 zoning along Riva Road and a town center district at Riva Road and Forest Drive. This area is also saturated with heavy commercial zoning along West Street and Forest Drive. The area along the South River is primarily a combination of R-1 and R-2 zoning.

**Sewer Service:**<sup>3</sup> Sewer service exists in most of the area. Most of the areas southeast of Edgewood Road, northwest of Forest Drive and north of Bestgate Road are in the future sewer service area or no sewer service area.

**Water Service:**<sup>3</sup> Water service exists in most of the area including the City of Annapolis, Route 2, Route 450 and Bestgate corridors. Most of the areas southeast of Edgewood Road, northwest of Forest Drive and north of Bestgate Road are in the no water service area.

**Enrollment:** Enrollment at Annapolis High is projected to remain stable over the next decade. The Maryland Department of Planning indicates the Annapolis Feeder System as an area that may receive a modest number of BRAC households. (See Appendix “Q”). A proposed Performing & Visual Arts magnet program may cause a rise in enrollment in the near future.

**Planning:**<sup>6</sup> A revised Comprehensive Plan for Annapolis has been prepared. A current effort to annex adjacent property into the city indicates that there may be a significant change in future land use. The 1997 General Development Plan (GDP) for this area was updated via the implementation of the Annapolis Neck Small Area Plan which went into effect on May 8, 2003. The 2009 GDP was approved by the County Council on October 19, 2009.

**Statistical Data:**<sup>1</sup>

Population of attendance area .....	68,396
Number in public schools (PreK-12) .....	5,468
Percent in public schools .....	8%
Percent non-white .....	63%
Average home value.....	\$320,750
Median income.....	\$68,450

**FACILITIES INVENTORY AND  
ENROLLMENT PROJECTIONS BY GRADE**

*ANNAPOLIS HIGH (Grade 9-12)  
2700 Riva Road  
Annapolis*

*State-Rated Capacity: 1,739*

	ACTUAL	PROJECTED									
	2010	2011	2012	2013	2014	2015	2016	2017	2018	2019	2020
KDGN											
1											
2											
3											
4											
5											
6											
7											
8											
9	417	419	425	421	431	430	445	452	452	435	437
10	400	377	373	378	366	373	373	385	392	393	395
11	400	411	376	370	378	365	373	372	384	391	393
12	327	362	377	346	337	342	331	336	336	348	349
<b>Total</b>	<b>1,544</b>	<b>1,569</b>	<b>1,551</b>	<b>1,515</b>	<b>1,512</b>	<b>1,510</b>	<b>1,522</b>	<b>1,545</b>	<b>1,564</b>	<b>1,567</b>	<b>1,574</b>
<b>FTE</b>	<b>1,544</b>	<b>1,569</b>	<b>1,551</b>	<b>1,515</b>	<b>1,512</b>	<b>1,510</b>	<b>1,522</b>	<b>1,545</b>	<b>1,564</b>	<b>1,567</b>	<b>1,574</b>

Date of Occupancy: 1979  
 Science Lab Renovation: March 2004  
 Chiller - 2006  
 Evaluation of physical condition - Good

Size of existing building: 260,000 sq.ft.  
 Acreage of site: 54 acres  
 Current Relocatables: 8

# Annapolis Middle School

**Geographic/Demographic Component:**<sup>1</sup> Annapolis Middle School is located within census tracts 7024, 7025, 7026, 7063, 7064, 7065 and 7066.

**Zoning:**<sup>2</sup> Annapolis Middle serves a portion of the county located south of Forest Drive and east of Edgewood Road. Zoning in this area is primarily R-1 and R-2, with R-5 zoning located to the east in Arundel-on-the-Bay and Highland Beach. The Bembe Beach and Sparrows Beach area consists of high density R-15 and R-22. The city portion of this attendance area, which is south of Spa Creek to Edgewood Road has mixed zoning and multi-family residences and commercial use along most major streets.

**Sewer Service:**<sup>3</sup> Sewer service exists in most of the area. Most of the areas southeast of Edgewood Road and northwest of Forest Drive are in the future sewer service area or no sewer service area.

**Water Service:**<sup>3</sup> Water service exists in most of the area including the City of Annapolis. Most of the areas southeast of Edgewood Road, and northwest of Forest Drive are in the no water service area.

**Enrollment:** Enrollment will continue to be far below the capacity of this facility through the year 2020. Several alternative uses for the excess capacity are currently being considered. At this time, a future use remains undetermined. Administrative offices are currently housed in one wing of this school.

**Planning:**<sup>6</sup> A revised Comprehensive Plan for Annapolis has been prepared. A current effort to annex adjacent property into the city indicates that there may be a significant change in future land use. The 1997 General Development Plan (GDP) for this area was updated via the implementation of the Annapolis Neck Small Area Plan which went into effect on May 8, 2003. The 2009 GDP was approved by the County Council on October 19, 2009.

**FACILITIES INVENTORY AND  
ENROLLMENT PROJECTIONS BY GRADE**

*ANNAPOLIS MIDDLE (Grade 6-8)  
1399 Forest Drive  
Annapolis*

*State-Rated Capacity: 1,495*

	ACTUAL	PROJECTED									
	2010	2011	2012	2013	2014	2015	2016	2017	2018	2019	2020
KDGN											
1											
2											
3											
4											
5											
6	216	197	191	198	202	202	195	199	207	206	207
7	211	216	228	223	231	235	235	227	232	241	242
8	172	211	210	210	211	218	222	222	214	219	220
9											
10											
11											
12											
<b>Total</b>	<b>599</b>	<b>624</b>	<b>629</b>	<b>631</b>	<b>644</b>	<b>655</b>	<b>652</b>	<b>648</b>	<b>653</b>	<b>666</b>	<b>669</b>
<b>FTE</b>	<b>599</b>	<b>624</b>	<b>629</b>	<b>631</b>	<b>644</b>	<b>655</b>	<b>652</b>	<b>648</b>	<b>653</b>	<b>666</b>	<b>669</b>

Date of Occupancy: 1964  
Evaluation of physical condition - Fair

Size of existing building: 216,000 sq.ft.  
Acreage of site: 39.83 acres

# Bates Middle School

**Geographic/Demographic Component:**<sup>1</sup> Bates Middle School is located within census tracts 7024, 7027, 7061, 7061.01, 7064, 7065, 7066 and 7067.

**Zoning:**<sup>2</sup> The county portion of this attendance area, which lies west of Route 2 to Route 450, is zoned primarily R-2, with a portion of R-5 located along Riva Road and a town center district located at Forest Drive and Riva Road. The northern portion south of and along Bestgate Road, is zoned R-15 and zoning account for two large shopping centers in the Parole area. The city portion of the Bates attendance area, which lies east of Route 2 to Spa Creek, has mixed zoning for single family residences and high-density general residence districts. The West Street corridor is zoned for general commercial shopping district.

**Sewer Service:**<sup>3</sup> Sewer service exists in most of the area. Most of the areas northwest of Forest Drive and north of Bestgate Road are in the future service area or no service area.

**Water Service:**<sup>3</sup> Water service exists in most of the area including the City of Annapolis, Route 2, Route 450 and Bestgate corridors. Most of the areas, northwest of Forest Drive and north of Bestgate Road are in the no water service area.

**Enrollment:** Enrollment, as projected, will keep the Bates facility below capacity through the year 2020. Some excess space is currently utilized by outside activities and organizations.

**Planning:**<sup>6</sup> A revised Comprehensive Plan for Annapolis has been prepared. A current effort to annex adjacent property into the city indicates that there may be a significant change in future land use. The 1997 General Development Plan (GDP) for this area was updated via the implementation of the Annapolis Neck Small Area Plan which went into effect on May 8, 2003. The 2009 GDP was approved by the County Council on October 19, 2009.

**FACILITIES INVENTORY AND  
ENROLLMENT PROJECTIONS BY GRADE**

***BATES MIDDLE (Grade 6-8)  
701 Chase Avenue at Smith  
Annapolis***

*State-Rated Capacity: 815*

	ACTUAL	PROJECTED									
	2010	2011	2012	2013	2014	2015	2016	2017	2018	2019	2020
KDGN											
1											
2											
3											
4											
5											
6	265	267	259	268	274	274	264	269	279	278	279
7	210	265	280	274	284	289	289	279	285	296	297
8	169	210	209	209	210	217	221	221	213	218	219
9											
10											
11											
12											
<b>Total</b>	<b>644</b>	<b>742</b>	<b>748</b>	<b>751</b>	<b>768</b>	<b>780</b>	<b>774</b>	<b>769</b>	<b>777</b>	<b>792</b>	<b>795</b>
<b>FTE</b>	<b>644</b>	<b>742</b>	<b>748</b>	<b>751</b>	<b>768</b>	<b>780</b>	<b>774</b>	<b>769</b>	<b>777</b>	<b>792</b>	<b>795</b>

Date of Occupancy: 1955  
 Addition/Renovation: 1962, 1980  
 Evaluation of physical condition - Good  
**Feasibility Study FY17**

Size of existing building: 145,520 sq.ft.  
 Acreage of site: 16.21 acres  
 Shared site with Maryland Hall

# Annapolis Elementary School

**Geographic/Demographic Component:**<sup>1</sup> Annapolis Elementary School is located within census tracts 7061, 7309.01, 7065 and 7067.

**Zoning:**<sup>2</sup> This attendance area is divided between city and county jurisdictions. The city sub-area is located within downtown Annapolis and is zoned primarily for commercial and professional offices. Most family residences are located within the conservation residence district. The United States Naval Academy also is located within this school attendance area. In addition, the U.S. Naval Academy housing, located north of the Severn River, is assigned to this attendance area and comprises the county sub-area.

**Sewer Service:**<sup>3</sup> Sewer service exists in the entire area.

**Water Service:**<sup>3</sup> Water service exists in the entire area.

**Development:** This area has experienced a low rate of residential development in the past four years.

**Enrollment:** Enrollments will increase slightly but remain below capacity over the next decade. The Annapolis Housing Authority is undertaking renovation projects in the Clay Street and College Creek Terrace public housing communities. As families are relocated and return during these renovations, Annapolis Elementary School may see a fluctuation in enrollment before stabilizing.

**Planning:**<sup>6</sup> A revised Comprehensive Plan for Annapolis has been prepared. A current effort to annex adjacent property into the city indicates that there may be a significant change in future land use. The 1997 General Development Plan (GDP) for this area was updated via the implementation of the Annapolis Neck Small Area Plan which went into effect on May 8, 2003. The 2009 GDP was approved by the County Council on October 19, 2009.

**FACILITIES INVENTORY AND  
ENROLLMENT PROJECTIONS BY GRADE**

*ANNAPOLIS ELEMENTARY (Grade PreK-5)  
180 Green Street  
Annapolis*

*State-Rated Capacity: 271*

	ACTUAL	PROJECTED									
	2010	2011	2012	2013	2014	2015	2016	2017	2018	2019	2020
KDGN	31	33	34	34	33	33	33	33	33	33	33
1	41	32	35	36	36	35	35	35	35	35	35
2	23	43	32	35	36	36	35	35	35	35	35
3	34	25	43	32	35	36	36	35	35	35	35
4	25	36	26	43	32	35	36	36	35	35	35
5	36	27	36	26	43	32	35	36	36	35	35
6											
7											
8											
9											
10											
11											
12											
PreK	13	15	15	15	15	15	15	15	15	15	15
<b>Total</b>	<b>203</b>	<b>211</b>	<b>221</b>	<b>221</b>	<b>230</b>	<b>222</b>	<b>225</b>	<b>225</b>	<b>224</b>	<b>223</b>	<b>223</b>
<b>FTE</b>	<b>203</b>	<b>211</b>	<b>221</b>	<b>221</b>	<b>230</b>	<b>222</b>	<b>225</b>	<b>225</b>	<b>224</b>	<b>223</b>	<b>223</b>

Date of Occupancy: 1896  
 Addition/Renovation: 1948, 1982  
 Evaluation of physical condition - Poor  
**School Under Design**

Size of existing building: 37,475 sq.ft.  
 Acreage of site: 2.69 (Shares site with Brown Bldg.)  
 Current Relocatables: 1

# Eastport Elementary School

**Geographic/Demographic Component:**<sup>1</sup> Eastport Elementary School is located within census tract 7025 and 7063.

**Zoning:**<sup>2</sup> Eastport, which is located on a peninsula, has maritime service and industrial zoning along the waterfront portions. The center of this area is zoned for single-family residences. Eastport has several areas zoned for high-density residential development and commercial zoning along Bay Ridge Avenue.

**Sewer Service:**<sup>3</sup> Sewer service exists in the entire area.

**Water Service:**<sup>3</sup> Water service exists in the entire area.

**Development:** This area has experienced a low rate of residential development in the past four years.

**Enrollment:** Enrollment is projected to increase over the next decade. Projected increases will put the enrollment just above the state-rated capacity.

**Planning:**<sup>6</sup> A revised Comprehensive Plan for Annapolis has been prepared. A current effort to annex adjacent property into the city indicates that there may be a significant change in future land use. The 1997 General Development Plan (GDP) for this area was updated via the implementation of the Annapolis Neck Small Area Plan which went into effect on May 8, 2003. The 2009 GDP was approved by the County Council on October 19, 2009.

**FACILITIES INVENTORY AND  
ENROLLMENT PROJECTIONS BY GRADE**

*EASTPORT ELEMENTARY (Grade PreK-5)  
420 Fifth Street  
Annapolis*

*State-Rated Capacity: 270*

	ACTUAL	PROJECTED									
	2010	2011	2012	2013	2014	2015	2016	2017	2018	2019	2020
KDGN	46	43	45	45	44	44	44	44	44	44	44
1	44	45	45	48	48	46	46	46	46	47	46
2	30	44	44	45	48	48	46	46	46	46	47
3	39	30	44	44	45	48	48	46	46	46	46
4	28	39	31	44	44	45	48	48	46	46	46
5	30	28	39	31	44	44	45	48	48	46	46
6											
7											
8											
9											
10											
11											
12											
PreK	20	20	20	20	20	20	20	20	20	20	20
<b>Total</b>	<b>237</b>	<b>249</b>	<b>268</b>	<b>277</b>	<b>293</b>	<b>295</b>	<b>297</b>	<b>298</b>	<b>296</b>	<b>295</b>	<b>295</b>
<b>FTE</b>	<b>237</b>	<b>249</b>	<b>268</b>	<b>277</b>	<b>293</b>	<b>295</b>	<b>297</b>	<b>298</b>	<b>296</b>	<b>295</b>	<b>295</b>

Date of Occupancy: 1909  
 Addition/Renovation: 1951, 1963, 1993  
 Evaluation of physical condition - Good

Size of existing building: 34,658 sq.ft.  
 Acreage of site: 3 acres  
 Current Relocatables: 1

# Georgetown East Elementary School

**Geographic/Demographic Component:**<sup>1</sup> Georgetown East Elementary School is located within the census tracts 7025, 7026 and 7063.

**Zoning:**<sup>2</sup> This attendance area is divided between city and county jurisdiction. The city sub-area, located north of Edgewood Road, has a combination of single family residences zoning and higher density general residence zoning which allows garden apartments. The waterfront portion along the southern edge of Back Creek is zoned for maritime service and industrial use. The county is zoned primarily R-2. The Bembe Beach and Sparrows Beach communities are zoned for high density R-15 and R-22, and are yet to be developed.

**Sewer Service:**<sup>3</sup> Sewer service exists for most of this area.

**Water Service:**<sup>3</sup> Water service exists in the city of Annapolis. No Water service is planned for the county portion of this attendance area east of Edgewood Road.

**Development:** This area has experienced a low rate of residential development in the past four years.

**Enrollment:** Enrollment projections for Georgetown East reflect modest declines in enrollment through 2020.

**Planning:**<sup>6</sup> A revised Comprehensive Plan for Annapolis has been prepared. A current effort to annex adjacent property into the city indicates that there may be a significant change in future land use. The 1997 General Development Plan (GDP) for this area was updated via the implementation of the Annapolis Neck Small Area Plan which went into effect on May 8, 2003. The 2009 GDP was approved by the County Council on October 19, 2009.

**FACILITIES INVENTORY AND  
ENROLLMENT PROJECTIONS BY GRADE**

***GEORGETOWN EAST ELEMENTARY (Grade PreK-5)  
111 Dogwood Road  
Annapolis***

*State-Rated Capacity: 460*

	ACTUAL	PROJECTED									
	2010	2011	2012	2013	2014	2015	2016	2017	2018	2019	2020
KDGN	42	40	42	42	41	41	41	41	41	41	41
1	62	40	42	44	44	43	43	43	43	43	43
2	46	61	40	42	44	44	43	43	43	43	43
3	45	46	61	40	42	44	44	43	43	43	43
4	50	46	47	61	40	42	44	44	43	43	43
5	44	51	46	47	61	40	42	44	44	43	43
6											
7											
8											
9											
10											
11											
12											
Pre-K	36	40	40	40	40	40	40	40	40	40	40
ECI	11	11	11	11	11	11	11	11	11	11	11
<b>Total</b>	<b>336</b>	<b>335</b>	<b>329</b>	<b>327</b>	<b>323</b>	<b>305</b>	<b>308</b>	<b>309</b>	<b>308</b>	<b>307</b>	<b>307</b>
<b>FTE</b>	<b>331</b>	<b>330</b>	<b>324</b>	<b>322</b>	<b>318</b>	<b>300</b>	<b>303</b>	<b>304</b>	<b>303</b>	<b>302</b>	<b>302</b>

Date of Occupancy: 1972

Evaluation of physical condition - Good

Size of existing building: 68,216 sq.ft.

Acreage of site: 15.07 acres

# Germantown Elementary School

**Geographic/Demographic Component:**<sup>1</sup> Germantown Elementary School is located within census tracts 7027, 7065 and 7066.

**Zoning:**<sup>2</sup> This attendance area lies entirely within the Annapolis City limits. It is zoned primarily for single-family residences. The northern and southern portions of the area have a higher general residence zoning which allows garden apartments. Major business and commercial districts are zoned along the West Street corridor.

**Sewer Service:**<sup>3</sup> Sewer service exists in the entire area.

**Water Service:**<sup>3</sup> Water service exists in the entire area.

**Development:** This area has experienced a low rate of residential development in the past four years.

**Enrollment:** Growth is predicted over the next decade with enrollments exceeding capacity. Relocatables are currently being used to address capacity issues. The overcrowding will be mitigated through the construction of a new facility.

**Planning:**<sup>6</sup> A revised Comprehensive Plan for Annapolis has been prepared. A current effort to annex adjacent property into the city indicates that there may be a significant change in future land use. The 1997 General Development Plan (GDP) for this area was updated via the implementation of the Annapolis Neck Small Area Plan which went into effect on May 8, 2003. The 2009 GDP was approved by the County Council on October 19, 2009.

**FACILITIES INVENTORY AND  
ENROLLMENT PROJECTIONS BY GRADE**

***GERMANTOWN ELEMENTARY (Grade PreK-5)  
1411 Cedar Park Road  
Annapolis***

*State-Rated Capacity: 388*

	ACTUAL	PROJECTED									
	2010	2011	2012	2013	2014	2015	2016	2017	2018	2019	2020
KDGN	81	87	90	90	88	89	90	91	92	93	93
1	67	92	91	95	95	93	94	95	96	97	98
2	88	78	91	91	95	94	92	93	94	95	96
3	66	106	79	92	92	95	94	92	93	94	95
4	65	75	109	80	92	92	95	94	92	93	94
5	64	72	76	108	80	92	92	95	94	92	93
6											
7											
8											
9											
10											
11											
12											
Pre-K	40	40	40	40	40	40	40	40	40	40	40
<b>Total</b>	<b>471</b>	<b>550</b>	<b>576</b>	<b>596</b>	<b>582</b>	<b>595</b>	<b>597</b>	<b>600</b>	<b>601</b>	<b>604</b>	<b>609</b>
<b>FTE</b>	<b>471</b>	<b>550</b>	<b>576</b>	<b>596</b>	<b>582</b>	<b>595</b>	<b>597</b>	<b>600</b>	<b>601</b>	<b>604</b>	<b>609</b>

Date of Occupancy: 1967  
 Evaluation of physical condition - Fair  
***School Under Construction***

Size of existing building: 54,850 sq.ft.  
 Acreage of site: 36 acres (Shares site with  
 Phoenix Annapolis)  
 Current Relocatables: 9

# Hillsmere Elementary School

**Geographic/Demographic Component:**<sup>1</sup> Hillsmere Elementary School is located within census tracts 7025, 7026 and 7064.

**Zoning:**<sup>2</sup> The Hillsmere attendance area is zoned primarily R-2, with R-5 density existing in the Arundel-on-the-Bay and the Highland Beach communities. The Robinwood housing development has been totally reassigned to this district.

**Sewer Service:**<sup>3</sup> Sewer service exists for most of the area. Undeveloped areas are in the planned and future service area.

**Water Service:**<sup>3</sup> Water service exists for most of the area. Undeveloped areas are in the planned and future service area.

**Development:** Parts of this area have experienced a low rate of residential development in the past five years.

**Enrollment:** Enrollment in the Hillsmere area will grow moderately through the year 2020 and will exceed state-rated capacity.

**Planning:**<sup>6</sup> A revised Comprehensive Plan for Annapolis has been prepared. A current effort to annex adjacent property into the city indicates that there may be a significant change in future land use. The 1997 General Development Plan (GDP) for this area was updated via the implementation of the Annapolis Neck Small Area Plan which went into effect on May 8, 2003. The 2009 GDP was approved by the County Council on October 19, 2009.

**FACILITIES INVENTORY AND  
ENROLLMENT PROJECTIONS BY GRADE**

***HILLSMERE ELEMENTARY (Grade PreK-5)  
3052 Arundel on the Bay Road  
Annapolis***

*State-Rated Capacity: 476*

	ACTUAL	PROJECTED									
	2010	2011	2012	2013	2014	2015	2016	2017	2018	2019	2020
KDGN	82	78	81	81	79	80	81	82	82	83	83
1	75	79	82	86	86	83	84	85	87	87	87
2	64	74	78	82	86	85	83	83	85	86	86
3	82	65	75	79	83	86	85	83	83	85	86
4	58	83	67	76	79	83	86	85	83	83	85
5	55	59	84	67	76	79	83	86	85	83	83
6											
7											
8											
9											
10											
11											
12											
Pre-K	38	38	38	38	38	38	38	38	38	38	38
<b>Total</b>	<b>454</b>	<b>476</b>	<b>505</b>	<b>509</b>	<b>527</b>	<b>534</b>	<b>540</b>	<b>542</b>	<b>543</b>	<b>545</b>	<b>548</b>
<b>FTE</b>	<b>435</b>	<b>457</b>	<b>486</b>	<b>490</b>	<b>508</b>	<b>515</b>	<b>521</b>	<b>523</b>	<b>524</b>	<b>526</b>	<b>529</b>

Date of Occupancy: 1967  
 Evaluation of physical condition - Fair  
**Feasibility Study FY15**

Size of existing building: 49,130 sq.ft.  
 Acreage of site: 16.12 acres  
 Current Relocatables: 1

# Mills-Parole Elementary School

**Geographic/Demographic Component:**<sup>1</sup> Mills-Parole Elementary School is located within census tracts 7025, 7026, and 7065.

**Zoning:**<sup>2</sup> This attendance area is divided between city and county jurisdiction. The county sub-area, which is located west of Solomons Island Road and south of Forest Drive, has low density R-1 and R-2 zoning and includes the communities of Gingerville, Poplar Point and Wilelinor. Town center zoning exists in the northern portion of the county sub-area between Riva Road and Route 2, an area currently under development. The city sub-area lies east of Route 2 to Hilltop Lane. It is zoned primarily for single-family residences.

**Sewer Service:**<sup>3</sup> Sewer Service exists for most of the area. Bywater Estates is in the future service area.

**Water Service:**<sup>3</sup> Water Service exists for most of the area. Bywater Estates is in the planned service area.

**Development:** This area has experienced a very high rate of residential development in the past five years, primarily due to the availability of utilities.

**Enrollment:** Enrollment is projected to increase and exceed the capacity of the school. Overcrowding may be alleviated through redistricting.

**Planning:**<sup>6</sup> A revised Comprehensive Plan for Annapolis has been prepared. A current effort to annex adjacent property into the city indicates that there may be a significant change in future land use. The 1997 General Development Plan (GDP) for this area was updated via the implementation of the Annapolis Neck Small Area Plan which went into effect on May 8, 2003. The 2009 GDP was approved by the County Council on October 19, 2009.

**FACILITIES INVENTORY AND  
ENROLLMENT PROJECTIONS BY GRADE**

*MILLS-PAROLE ELEMENTARY (Grade PreK-5)  
103 Chinquapin Round Road  
Annapolis*

*State-Rated Capacity: 401*

	ACTUAL	PROJECTED									
	2010	2011	2012	2013	2014	2015	2016	2017	2018	2019	2020
KDGN	84	80	83	83	81	82	83	84	85	86	86
1	102	82	84	88	88	85	86	87	89	90	91
2	73	100	81	84	88	87	85	85	86	88	89
3	78	74	101	82	85	88	87	85	85	86	88
4	64	79	76	102	82	85	88	87	85	85	86
5	66	65	80	75	102	82	85	88	87	85	85
6											
7											
8											
9											
10											
11											
12											
Pre-K	40	40	40	40	40	40	40	40	40	40	40
<b>Total</b>	<b>507</b>	<b>520</b>	<b>545</b>	<b>554</b>	<b>566</b>	<b>549</b>	<b>554</b>	<b>556</b>	<b>557</b>	<b>560</b>	<b>565</b>
<b>FTE</b>	<b>507</b>	<b>520</b>	<b>545</b>	<b>554</b>	<b>566</b>	<b>549</b>	<b>554</b>	<b>556</b>	<b>557</b>	<b>560</b>	<b>565</b>

Date of Occupancy: 1952  
 Addition/Renovation: 1958, 1965, 1994  
 Evaluation of physical condition - Good  
**Feasibility Study FY12**

Size of existing building: 54,280 sq.ft.  
 Acreage of site: 8.89 acres  
 Current Relocatables: 7

# Rolling Knolls Elementary School

**Geographic/Demographic Component:**<sup>1</sup> Rolling Knolls Elementary School is located within census tracts 7024 and 7027.

**Zoning:**<sup>2</sup> The Rolling Knolls attendance area is zoned primarily R-1 and R-2. There is a large portion devoted to open space, which makes up the Annapolis Water Works. Commercial zoning at the corner of West Street and Generals Highway is intermixed with light industrial zoning along Route 450.

**Sewer Service:**<sup>3</sup> Sewer service exists for the Bestgate area and the City of Annapolis. The remaining area is in the no planned service area.

**Water Service:**<sup>3</sup> Water Service exists in the City of Annapolis, the community of Rolling Knolls and the area around Annapolis Mall. The remaining area is in the no planned service area.

**Development:** This area has experienced a moderate rate of residential development in the past five years. However, most units are those with low student yields.

**Enrollment:** Enrollments are projected to increase through the year 2020 and remain over state-rated capacity.

**Planning:**<sup>6</sup> A revised Comprehensive Plan for Annapolis has been prepared. A current effort to annex adjacent property into the city indicates that there may be a significant change in future land use. The 1997 General Development Plan (GDP) for this area was updated via the implementation of the Annapolis Neck Small Area Plan which went into effect on May 8, 2003. The 2009 GDP was approved by the County Council on October 19, 2009.

**FACILITIES INVENTORY AND  
ENROLLMENT PROJECTIONS BY GRADE**

***ROLLING KNOLLS ELEMENTARY (Grade PreK-5)  
1985 Valley Road  
Annapolis***

*State-Rated Capacity: 362*

	ACTUAL	PROJECTED									
	2010	2011	2012	2013	2014	2015	2016	2017	2018	2019	2020
KDGN	71	68	71	71	70	71	72	72	72	73	73
1	74	70	71	75	75	74	75	76	76	76	77
2	73	73	69	71	75	75	74	74	76	76	75
3	65	73	74	70	72	75	75	74	74	76	76
4	59	66	75	75	70	72	75	75	74	74	76
5	63	60	67	74	75	70	72	75	75	74	74
6											
7											
8											
9											
10											
11											
12											
Pre-K	37	37	37	37	37	37	37	37	37	37	37
<b>Total</b>	<b>442</b>	<b>447</b>	<b>464</b>	<b>473</b>	<b>474</b>	<b>474</b>	<b>480</b>	<b>483</b>	<b>484</b>	<b>486</b>	<b>488</b>
<b>FTE</b>	<b>424</b>	<b>429</b>	<b>446</b>	<b>455</b>	<b>456</b>	<b>456</b>	<b>462</b>	<b>465</b>	<b>466</b>	<b>468</b>	<b>470</b>

Date of Occupancy: 1963  
 Addition/Renovation: 1995  
 Evaluation of physical condition - Fair  
**Feasibility Study FY12**

Size of existing building: 38,951 sq.ft.  
 Acreage of site: 14.74 acres  
 Current Relocatables: 7

# Tyler Heights Elementary School

**Geographic/Demographic Component:**<sup>1</sup> Tyler Heights Elementary School is located within census tract 7026 and 7064.

**Zoning:**<sup>2</sup> The Tyler Heights attendance area is located entirely within the Annapolis city limits and is zoned primarily for single family residences. A portion of the area located south of the school is zoned for garden apartments.

**Sewer Service:**<sup>3</sup> Sewer service exists in the entire area.

**Water Service:**<sup>3</sup> Water service exists in the entire area.

**Development:** This area has experienced low residential development.

**Enrollment:** Enrollments are projected to increase significantly through the year 2020. This may be due, in large part, to the ongoing shift in public housing in the Annapolis area. Current or planned construction projects are causing students to be shifted from one community to another.

**Planning:**<sup>6</sup> A revised Comprehensive Plan for Annapolis has been prepared. A current effort to annex adjacent property into the city indicates that there may be a significant change in future land use. The 1997 General Development Plan (GDP) for this area was updated via the implementation of the Annapolis Neck Small Area Plan which went into effect on May 8, 2003. The 2009 GDP was approved by the County Council on October 19, 2009.

**FACILITIES INVENTORY AND  
ENROLLMENT PROJECTIONS BY GRADE**

***TYLER HEIGHTS ELEMENTARY (Grade PreK-5)***  
*200 Janwal Street*  
*Annapolis*

*State-Rated Capacity: 382*

	ACTUAL	PROJECTED									
	2010	2011	2012	2013	2014	2015	2016	2017	2018	2019	2020
KDGN	94	90	93	93	91	92	93	94	95	96	96
1	75	92	94	98	98	96	97	98	99	101	101
2	60	74	91	94	98	97	95	96	97	98	100
3	67	59	75	92	95	98	97	95	96	97	98
4	47	68	60	76	92	95	98	97	95	96	97
5	48	48	69	60	76	92	95	98	97	95	96
6											
7											
8											
9											
10											
11											
12											
Pre-K	41	41	41	41	41	41	41	41	41	41	41
<b>Total</b>	<b>432</b>	<b>472</b>	<b>523</b>	<b>554</b>	<b>591</b>	<b>611</b>	<b>616</b>	<b>619</b>	<b>620</b>	<b>624</b>	<b>629</b>
<b>FTE</b>	<b>432</b>	<b>472</b>	<b>523</b>	<b>554</b>	<b>591</b>	<b>611</b>	<b>616</b>	<b>619</b>	<b>620</b>	<b>624</b>	<b>629</b>

Date of Occupancy: 1962  
 Addition/Renovation: Kindergarten Bldg.: 1970; 1996  
 Evaluation of physical condition - Fair  
**Feasibility Study FY17**

Size of existing building: 47,544 sq.ft.  
 Acreage of site: 15.26 acres  
 Current Relocatables: 8

# West Annapolis Elementary School

**Geographic/Demographic Component:**<sup>1</sup> West Annapolis Elementary School is located within census tracts 7027, 7061.01, 7065, 7066, and 7067.

**Zoning:**<sup>2</sup> Portions north of Weems Creek along Bestgate Road make up the county sub-area. The section north of Bestgate Road is zoned predominately R-2. The eastern portion along the Severn River is zoned R-5. The section south of Bestgate Road makes up the high density, R-15 and R-22, portion of the county sub-area.

The city sub-area is located between Weems Creek and College Creek, east of Rowe Boulevard and is zoned for single family residences. A portion of this sub-area along Rowe Boulevard is zoned for a community shopping district and professional offices. Family housing for U.S. Naval Academy is located in the southeast portion of this attendance area.

**Sewer Service:**<sup>3</sup> Sewer service exists in the City of Annapolis and the Bestgate Road portion of this area. The remainder of the area is in the future service area.

**Water Service:**<sup>3</sup> Water service exists for the entire area.

**Development:** This area has experienced a low rate of residential development.

**Enrollment:** Enrollments are projected to decline moderately through the year 2020.

**Planning:**<sup>6</sup> A revised Comprehensive Plan for Annapolis has been prepared. A current effort to annex adjacent property into the city indicates that there may be a significant change in future land use. The 1997 General Development Plan (GDP) for this area was updated via the implementation of the Annapolis Neck Small Area Plan which went into effect on May 8, 2003. The 2009 GDP was approved by the County Council on October 19, 2009.

**FACILITIES INVENTORY AND  
ENROLLMENT PROJECTIONS BY GRADE**

*WEST ANNAPOLIS ELEMENTARY (Grade K-5)  
210 Annapolis Street  
Annapolis*

*State-Rated Capacity: 274*

	ACTUAL	PROJECTED									
	2010	2011	2012	2013	2014	2015	2016	2017	2018	2019	2020
KDGN	39	37	38	38	37	37	37	37	37	37	37
1	51	38	39	40	40	39	39	39	39	39	39
2	58	50	38	39	40	40	39	39	39	39	39
3	46	58	50	38	39	40	40	39	39	39	39
4	47	46	59	50	38	39	40	40	39	39	39
5	38	48	46	59	50	38	39	40	40	39	39
6											
7											
8											
9											
10											
11											
12											
<b>Total</b>	<b>279</b>	<b>277</b>	<b>270</b>	<b>264</b>	<b>244</b>	<b>233</b>	<b>234</b>	<b>234</b>	<b>233</b>	<b>232</b>	<b>232</b>
<b>FTE</b>	<b>279</b>	<b>277</b>	<b>270</b>	<b>264</b>	<b>244</b>	<b>233</b>	<b>234</b>	<b>234</b>	<b>233</b>	<b>232</b>	<b>232</b>

Date of Occupancy: 1956  
 Addition/Renovation: 1972, 1984  
 Evaluation of physical condition - Fair  
**Feasibility Study FY12**

Size of existing building: 31,669 sq.ft.  
 Acreage of site: 2.23 acres  
 Current Relocatables: 1