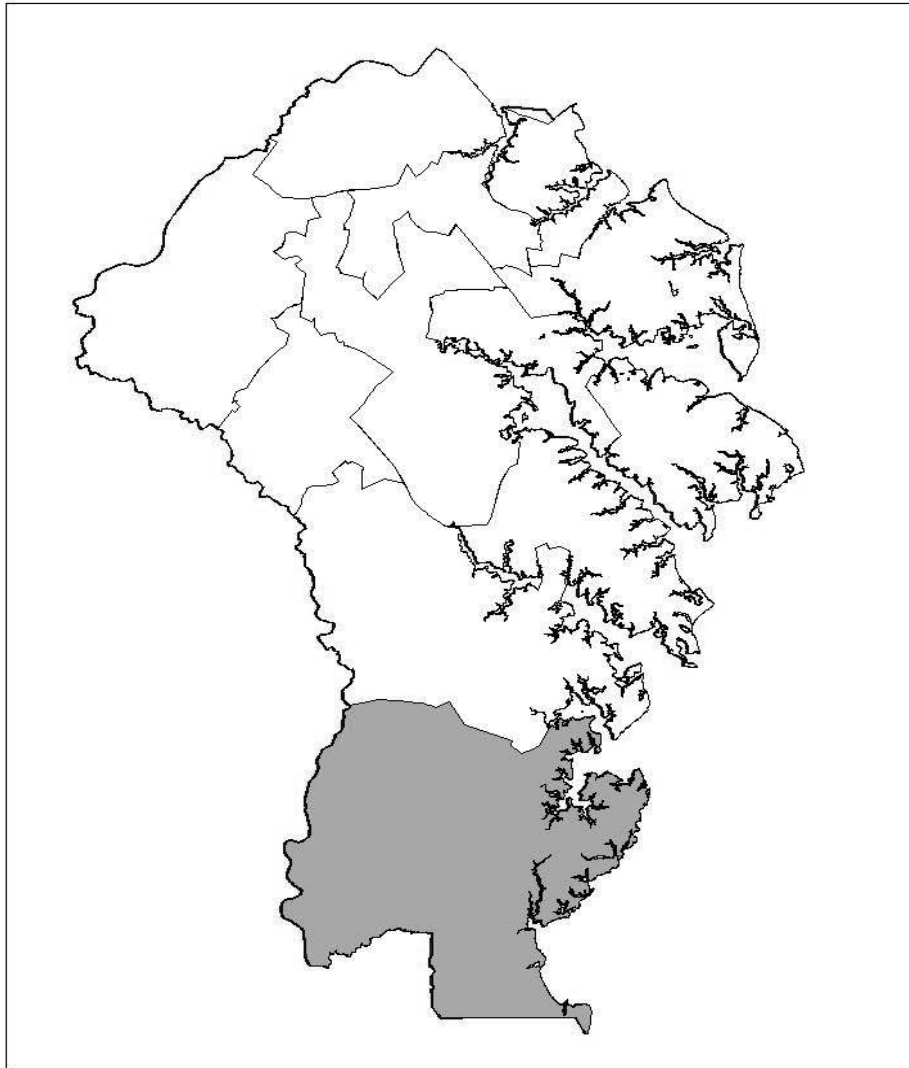
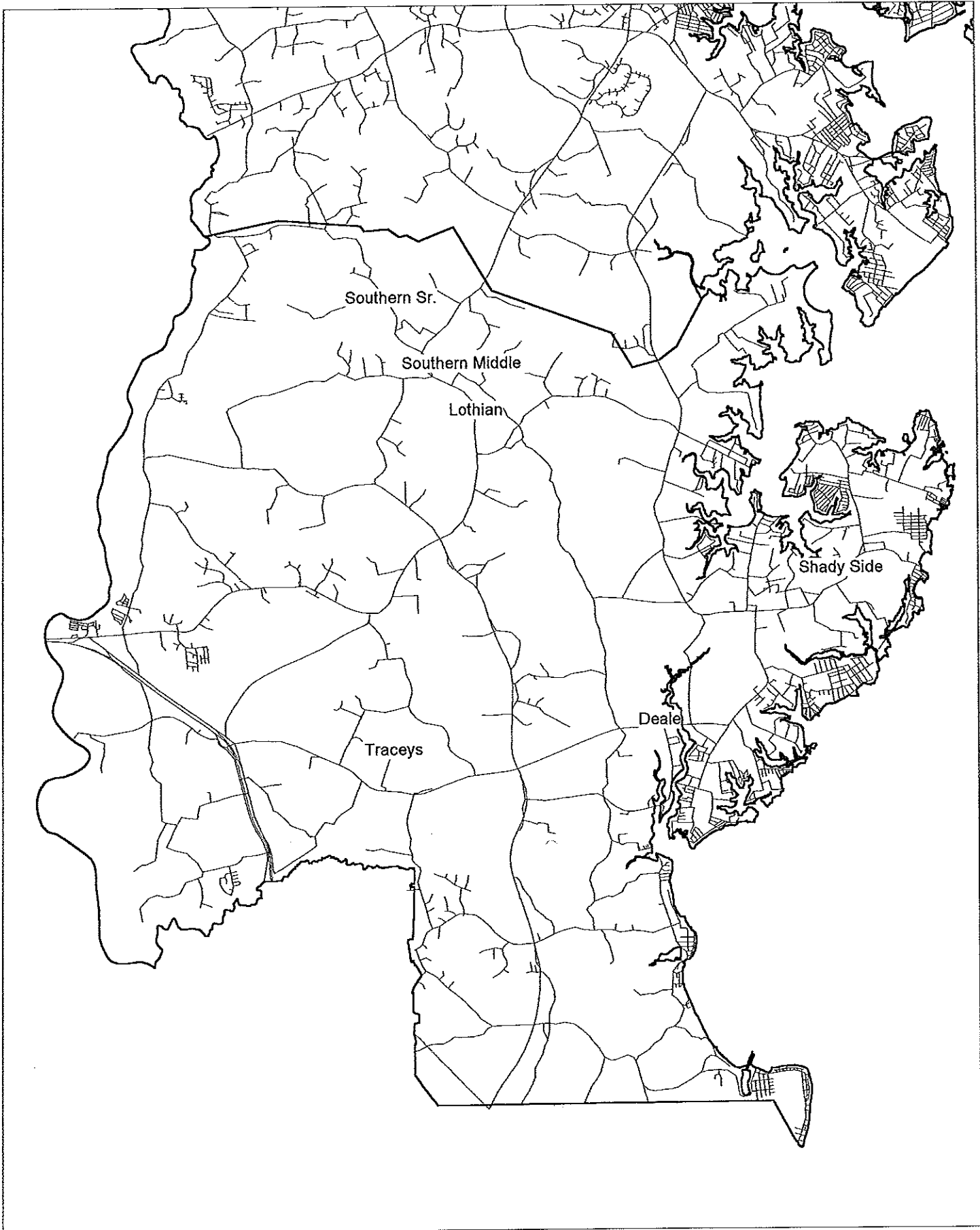




SOUTHERN FEEDER SYSTEM



Southern High School (9-12)
Southern Middle (6-8)
Deale Elementary (K-5)
Lothian Elementary (PreK-5)
Shady Side elementary (K-5)
Tracey's Elementary (K-5)



FACILITIES/ENROLLMENT COMPARISON SOUTHERN FEEDER SYSTEM

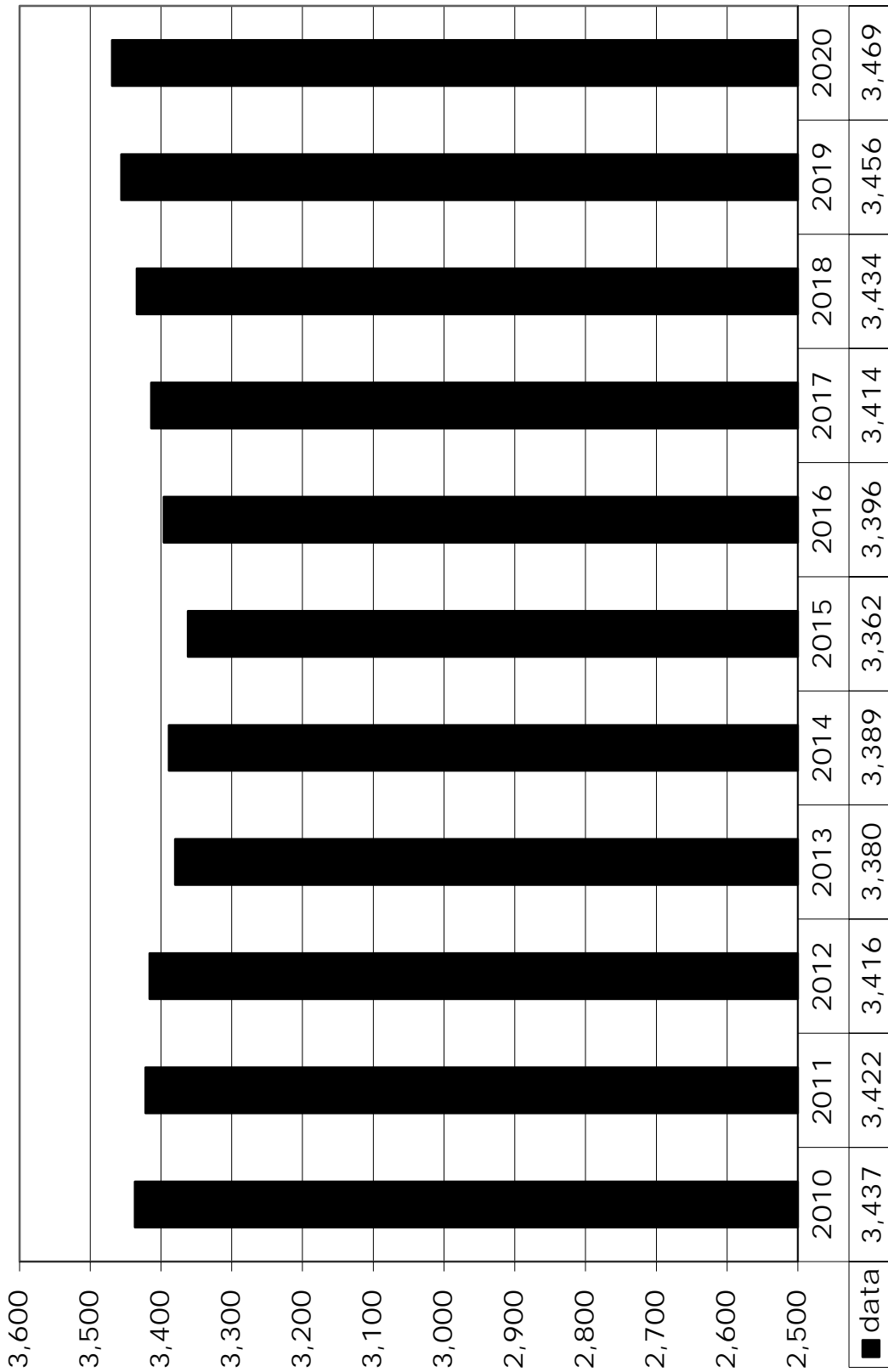
Existing School	State Capacity	Grades Served	PRESENT AND PROJECTED FTE ENROLLMENT												
			Actual	2010	2011	2012	2013	2014	2015	2016	2017	2018	2019	2020	
Southern High	1,355	9-12	1,134	1,157	1,145	1,118	1,118	1,118	1,116	1,125	1,142	1,156	1,158	1,163	
Southern Middle	1,091	6-8	765	780	785	789	806	818	813	808	814	829	832		
Deale Elem ▲	330	K-5	282	276	257	247	233	213	222	222	221	220	220		
Lothian Elem 1	463	PreK-5	455	438	459	465	476	483	490	494	496	500	503		
Shady Side Elem 2	502	K-5	443	426	414	404	403	377	386	387	386	387	388		
Tracey's Elem	397	K-5	358	345	356	357	353	355	360	361	361	362	363		
TOTALS	4,138		3,437	3,422	3,416	3,380	3,389	3,362	3,396	3,414	3,434	3,456	3,469		
ELEM TOTALS	1,692		1,538	1,485	1,486	1,473	1,465	1,428	1,458	1,464	1,464	1,469	1,474		

▲ = Denotes school is located in Priority Funding Area

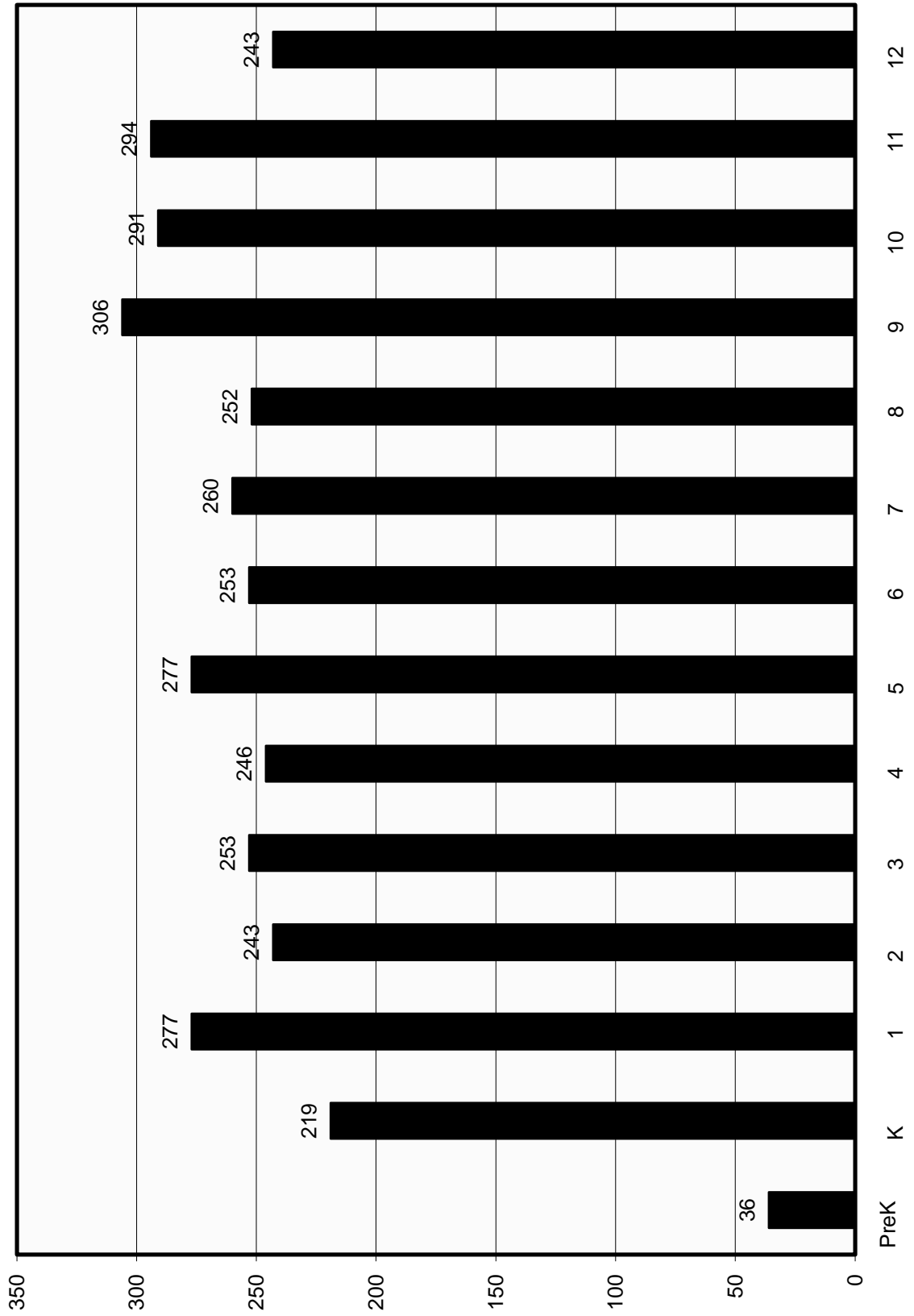
1. Feasibility Study FY12
2. Feasibility Study FY15

SOUTHERN FEEDER SYSTEM ENROLLMENT

2010 Actual, 2011-2020 Projected



SOUTHERN FEEDER SYSTEM ACTUAL SEPTEMBER 2010 ENROLLMENT



Southern High School

Geographic/Demographic Component:¹ Southern High School is located within census tracts 7013, 7014, 7070.01, and 7080.

Zoning:² Zoning in the Southern High School attendance area is predominately R-A, with higher densities of R-2 and R-5 along the river inlet communities and those communities fronting on the Chesapeake Bay. Marina-related industry and commercial districts exist along these waterways.

Sewer Service:³ Sewer service exists in the Shady Side, Deale and Galesville areas. The undeveloped area adjacent to Shady Side and Deale are in the planned service area. The remaining areas are in the no planned service area.

Water Service:³ The entire area is in the no planned service area.

Enrollment: Enrollment is projected to remain stable through the year 2020.

Planning:⁶ The 1997 Anne Arundel County General Development Plan (GDP) for this area was updated via the implementation of the South County and Deale/Shady Side Small Area Plans which went into effect on December 28, 2001 and July 23, 2001 respectively. The 2009 GDP was approved by the County Council on October 19, 2009.

Statistical Data:¹

Population of attendance area	24,233
Number in public schools (PreK-12)	3,536
Percent in public schools	15%
Percent non-white	16%
Average home value.....	\$235,700
Median income.....	\$71,901

**FACILITIES INVENTORY AND
ENROLLMENT PROJECTIONS BY GRADE**

*SOUTHERN HIGH (Grade 9-12)
4400 Solomons Island Road
Harwood*

State-Rated Capacity: 1,355

	ACTUAL	PROJECTED									
	2010	2011	2012	2013	2014	2015	2016	2017	2018	2019	2020
KDGN											
1											
2											
3											
4											
5											
6											
7											
8											
9	306	312	317	314	322	321	332	337	337	325	326
10	291	274	271	275	267	272	272	281	286	286	287
11	294	302	277	272	278	268	274	273	282	287	289
12	243	269	280	257	251	255	247	251	251	260	261
Total	1,134	1,157	1,145	1,118	1,118	1,116	1,125	1,142	1,156	1,158	1,163
FTE	1,134	1,157	1,145	1,118	1,118	1,116	1,125	1,142	1,156	1,158	1,163

Date of Occupancy: 1968
 Addition/Renovation: 1995
 Evaluation of physical condition - Fair

Size of existing building: 226,206 sq.ft.
 Acreage of site: 59.92 acres

Southern Middle School

Geographic/Demographic Component:¹ Southern Middle School is located within census tracts 7013, 7014, 7070, and 7080.

Zoning:² Zoning in the Southern Middle attendance area is predominately R-A, with higher densities of R-2 and R-5 along the river inlet communities and those communities fronting the Chesapeake Bay. Marina-related industry and commercial districts exist along these waterways.

Sewer Service:³ Sewer service exists in the Shady Side, Deale and Galesville areas. The undeveloped area adjacent to Shady Side and Deale are in the planned service area. The remaining areas are in the no planned service area.

Water Service:³ The entire area is in the no planned service area.

Enrollment: Enrollment is expected to increase slightly. Adequate capacity exists at this school through at least 2020.

Planning:⁶ The 1997 Anne Arundel County General Development Plan (GDP) for this area was updated via the implementation of the South County and Deale/Shady Side Small Area Plans which went into effect on December 28, 2001 and July 23, 2001 respectively. The 2009 GDP was approved by the County Council on October 19, 2009.

**FACILITIES INVENTORY AND
ENROLLMENT PROJECTIONS BY GRADE**

*SOUTHERN MIDDLE (Grade 6-8)
5235 Solomons Island Road
Lothian*

State-Rated Capacity: 1,091

	ACTUAL	PROJECTED									
	2010	2011	2012	2013	2014	2015	2016	2017	2018	2019	2020
KDGN											
1											
2											
3											
4											
5											
6	253	267	259	268	274	274	264	269	279	278	279
7	260	253	267	262	272	276	276	266	272	282	283
8	252	260	259	259	260	268	273	273	263	269	270
9											
10											
11											
12											
Total	765	780	785	789	806	818	813	808	814	829	832
FTE	765	780	785	789	806	818	813	808	814	829	832

Date of Occupancy: 1933
 Addition/Renovation: 1948, 1949, 1951, 1959,
 1988, 2002
 Evaluation of physical condition - Good

Size of existing building: 200,102 sq.ft.
 Acreage of site: 32.21 acres
 Current Relocatables: 8

Deale Elementary School

Geographic/Demographic Component:¹ Deale Elementary School is located within census tract 7070.

Zoning:² Zoning in the Deale attendance area is predominately R-5, with several areas of commercial marina district.

Sewer Service:³ Sewer service exists in the Deale area. The undeveloped area adjacent to Deale is in the planned service area. The remaining areas are in the no planned service area.

Water Service:³ The entire area is in the no planned service area.

Development: This area has experienced a low rate of residential development in the past four years.

Enrollment: Enrollment is projected to decrease through the year 2020.

Planning:⁶ The 1997 Anne Arundel County General Development Plan (GDP) for this area was updated via the implementation of the South County and Deale/Shady Side Small Area Plans which went into effect on December 28, 2001 and July 23, 2001 respectively. The 2009 GDP was approved by the County Council on October 19, 2009.

**FACILITIES INVENTORY AND
ENROLLMENT PROJECTIONS BY GRADE**

*DEALE ELEMENTARY (Grade K-5)
959 Masons Beach Road
Deale*

State-Rated Capacity: 330

	ACTUAL	PROJECTED									
	2010	2011	2012	2013	2014	2015	2016	2017	2018	2019	2020
KDGN	29	35	36	36	35	35	35	35	35	35	35
1	58	28	37	38	38	37	37	37	37	37	37
2	50	57	28	37	38	38	37	37	37	37	37
3	47	50	57	28	37	38	38	37	37	37	37
4	58	48	51	57	28	37	38	38	37	37	37
5	40	58	48	51	57	28	37	38	38	37	37
6											
7											
8											
9											
10											
11											
12											
ECI											
Total	282	276	257	247	233	213	222	222	221	220	220
FTE	282	276	257	247	233	213	222	222	221	220	220

Date of Occupancy: 1962
 Addition/Renovation: 1994
 Evaluation of physical condition - Good

Size of existing building: 53,444 sq.ft.
 Acreage of site: 17.07 acres

Lothian Elementary School

Geographic/Demographic Component:¹ Lothian Elementary School is located within census tracts 7013, 7014, and 7080.

Zoning:² Zoning in the Lothian area is R-A, with pockets of R-1.

Sewer Service:³ Sewer service exists in the Galesville areas. The remaining areas are in the no planned service area.

Water Service:³ The entire area is in the no planned service area.

Enrollment: Enrollment is projected to increase through the year 2020. On April 1, 2009, the Board of Education adopted redistricting reassigning Boone's Estates and all areas west of Boone's Estates and south of Route 408 to the Patuxent River from Lothian Elementary School to Tracey's Elementary School.

Planning:⁶ The 1997 Anne Arundel County General Development Plan (GDP) for this area was updated via the implementation of the South County and Deale/Shady Side Small Area Plans which went into effect on December 28, 2001 and July 23, 2001 respectively. The 2009 GDP was approved by the County Council on October 19, 2009.

**FACILITIES INVENTORY AND
ENROLLMENT PROJECTIONS BY GRADE**

*LOTHIAN ELEMENTARY (Grade PreK-5)
5175 Solomons Island Road
Lothian*

State-Rated Capacity: 463

	ACTUAL	PROJECTED									
	2010	2011	2012	2013	2014	2015	2016	2017	2018	2019	2020
KDGN	75	72	75	75	74	75	76	77	77	78	78
1	71	73	75	79	79	78	79	80	81	82	82
2	65	70	72	75	79	79	78	78	80	81	81
3	73	66	71	73	76	79	79	78	78	80	81
4	59	74	68	72	73	76	79	79	78	78	80
5	89	60	75	68	72	73	76	79	79	78	78
6											
7											
8											
9											
10											
11											
12											
PreK	36	36	36	36	36	36	36	36	36	36	36
ECI	9	9	9	9	9	9	9	9	9	9	9
Total	477	460	481	487	498	505	512	516	518	522	525
FTE	455	438	459	465	476	483	490	494	496	500	503

Date of Occupancy: 1956
 Addition/Renovation: 1966, 1977, 1993
 Evaluation of physical condition - Good
Feasibility Study FY12

Size of existing building: 66,281 sq.ft.
 Acreage of site: 17.06 acres
 Current Relocatables: 1

Shady Side Elementary School

Geographic/Demographic Component:¹ Shady Side Elementary School is located within census tract 7070.

Zoning:² Zoning in the Shady Side attendance area is predominately R-1, with a variety of other zoning. The higher density of R-5 is found in the Franklin Manor, Cedarhurst, Avalon Shores, and Curtis Point communities. Portions north of Steamboat Road are zoned R-2. Several commercial marina districts exist along the waterfront.

Sewer Service:³ Sewer service exists in the Shady Side area. The undeveloped area adjacent to Shady Side are in the planned service area. The remaining areas are in the no planned service area.

Water Service:³ The entire area is in the no planned service area.

Enrollment: Enrollment is projected to decrease through 2020.

Planning:⁶ The 1997 Anne Arundel County General Development Plan (GDP) for this area was updated via the implementation of the South County and Deale/Shady Side Small Area Plans which went into effect on December 28, 2001 and July 23, 2001 respectively. The 2009 GDP was approved by the County Council on October 19, 2009.

**FACILITIES INVENTORY AND
ENROLLMENT PROJECTIONS BY GRADE**

***SHADY SIDE ELEMENTARY (Grade K-5)
4859 Atwell Road at Snug Harbor Road
Shady Side***

State-Rated Capacity: 502

	ACTUAL	PROJECTED									
	2010	2011	2012	2013	2014	2015	2016	2017	2018	2019	2020
KDGN	58	60	62	62	61	61	62	62	62	63	63
1	89	57	63	66	66	64	64	65	65	66	66
2	65	88	56	63	66	66	64	64	65	65	65
3	75	65	89	56	64	66	66	64	64	65	65
4	78	76	67	90	56	64	66	66	64	64	65
5	78	80	77	67	90	56	64	66	66	64	64
6											
7											
8											
9											
10											
11											
12											
Total	443	426	414	404	403	377	386	387	386	387	388
FTE	443	426	414	404	403	377	386	387	386	387	388

Date of Occupancy: 1971
 Addition/Renovation: 2003
 Evaluation of physical condition - Good
Feasibility Study FY15

Size of existing building: 73,113 sq.ft.
 Acreage of site: 17.05 acres
 Current Relocatables: 1

Tracey's Elementary School

Geographic/Demographic Component:¹ Tracey's Elementary School is located within census tracts 7070 and 7080.

Zoning:² Zoning in the Tracey's attendance area is predominately R-A, with R-1 and R-2 zoning existing in the Fair Haven area and R-5 zoning existing in the Rose Haven area.

Sewer Service:³ Sewer service exists for the Fair Haven area. The undeveloped portions of Fair Haven are in the planned service area. The remaining areas are in the no planned service area.

Water Service:³ The entire area is in the no planned service area.

Enrollment: Enrollment remains stable through 2020. The renovated Tracey's Elementary School opened in January 2008. On April 1, 2009, the Board of Education adopted redistricting reassigning Boone's Estates and all areas west of Boone's Estates and south of Route 408 to the Patuxent River from Lothian Elementary School to Tracey's Elementary School.

Planning:⁶ The 1997 Anne Arundel County General Development Plan (GDP) for this area was updated via the implementation of the South County and Deale/Shady Side Small Area Plans which went into effect on December 28, 2001 and July 23, 2001 respectively. The 2009 GDP was approved by the County Council on October 19, 2009.

**FACILITIES INVENTORY AND
ENROLLMENT PROJECTIONS BY GRADE**

***TRACEY'S ELEMENTARY (Grade K-5)
20 Deale Road
Tracey's Landing***

State-Rated Capacity: 397

	ACTUAL	PROJECTED									
	2010	2011	2012	2013	2014	2015	2016	2017	2018	2019	2020
KDGN	57	56	58	58	57	57	58	58	58	59	59
1	59	57	59	61	61	60	60	61	61	61	62
2	63	58	56	59	61	61	60	60	61	61	60
3	58	63	58	56	60	61	61	60	60	61	61
4	51	59	65	58	56	60	61	61	60	60	61
5	70	52	60	65	58	56	60	61	61	60	60
6											
7											
8											
9											
10											
11											
12											
Total	358	345	356	357	353	355	360	361	361	362	363
FTE	358	345	356	357	353	355	360	361	361	362	363

Date of Occupancy: 1962
 Modernization/Addition: 2008
 Evaluation of physical condition - Excellent

Size of existing building: 56,640 sq.ft.
 Acreage of site: 14.20 acres