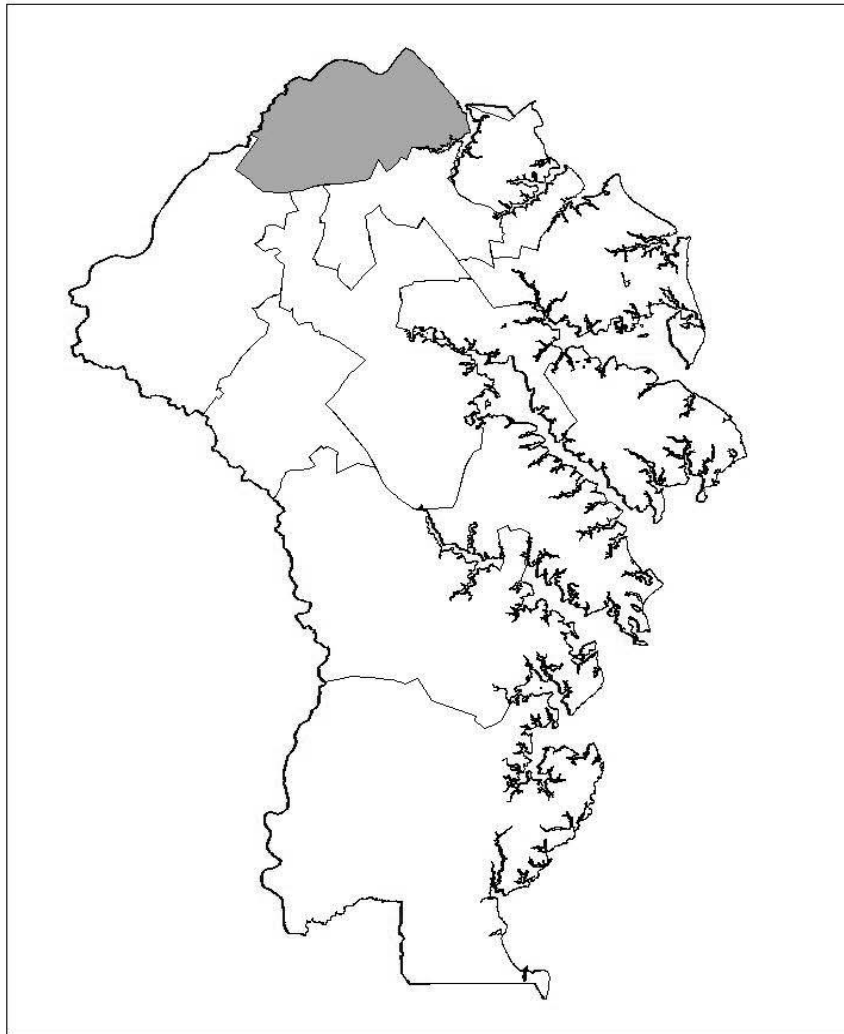


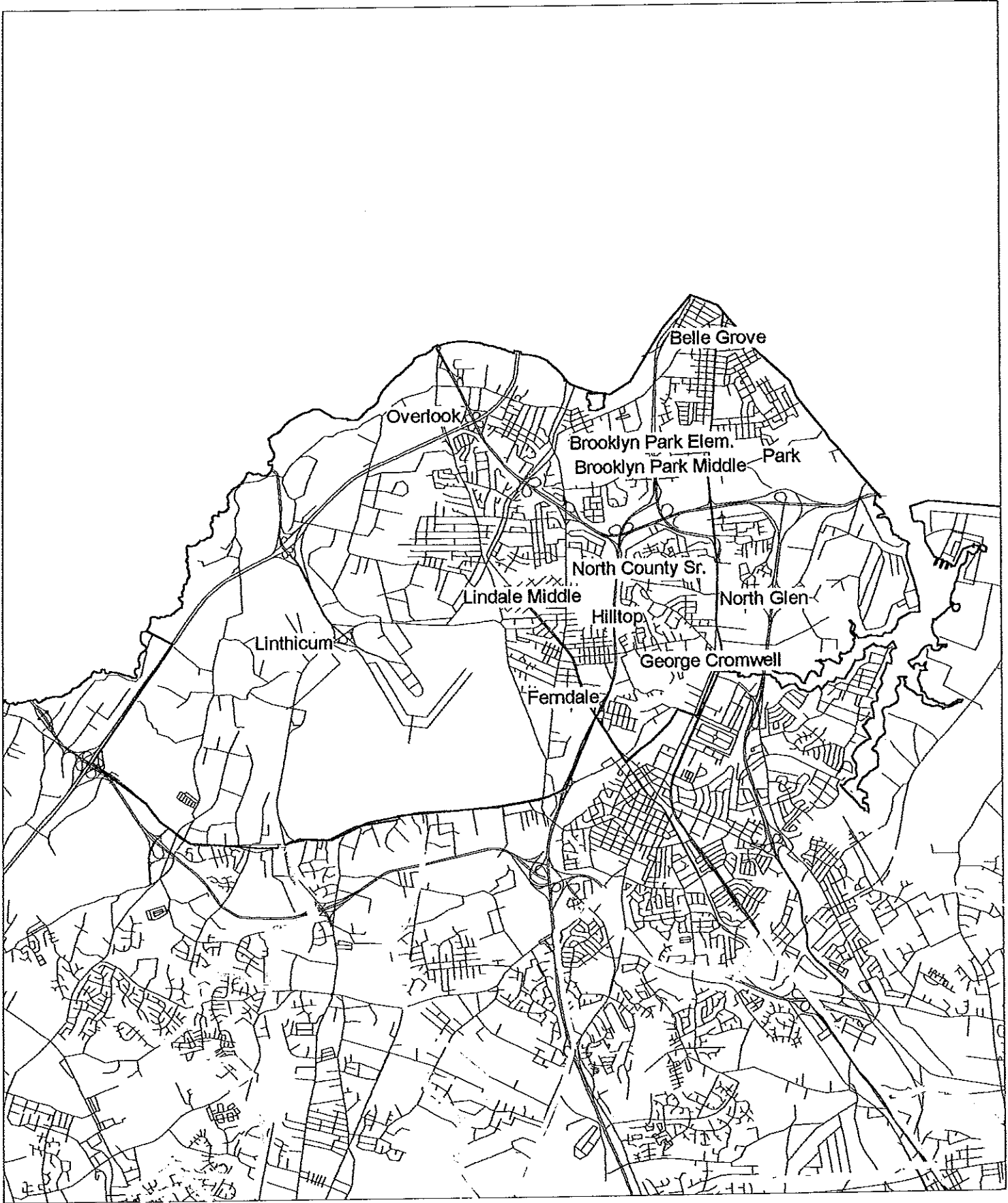


# NORTH COUNTY FEEDER SYSTEM



North County High School (9-12)  
Brooklyn Park Middle (6-8)  
Belle Grove Elementary (PreK-5)  
Brooklyn Park Elementary (PreK-5)  
Park Elementary (PreK-5)

North County High School (9-12)  
Lindale Middle (6-8)  
Ferndale Early Education Center (PreK-K)  
George Cromwell Elementary (1-5)  
Hilltop Elementary (PreK-5)  
Linthicum Elementary (K-5)  
North Glen Elementary (PreK-5)  
Overlook Elementary (K-5)



# FACILITIES/ENROLLMENT COMPARISON NORTH COUNTY FEEDER SYSTEM

## PRESENT AND PROJECTED FTE ENROLLMENT

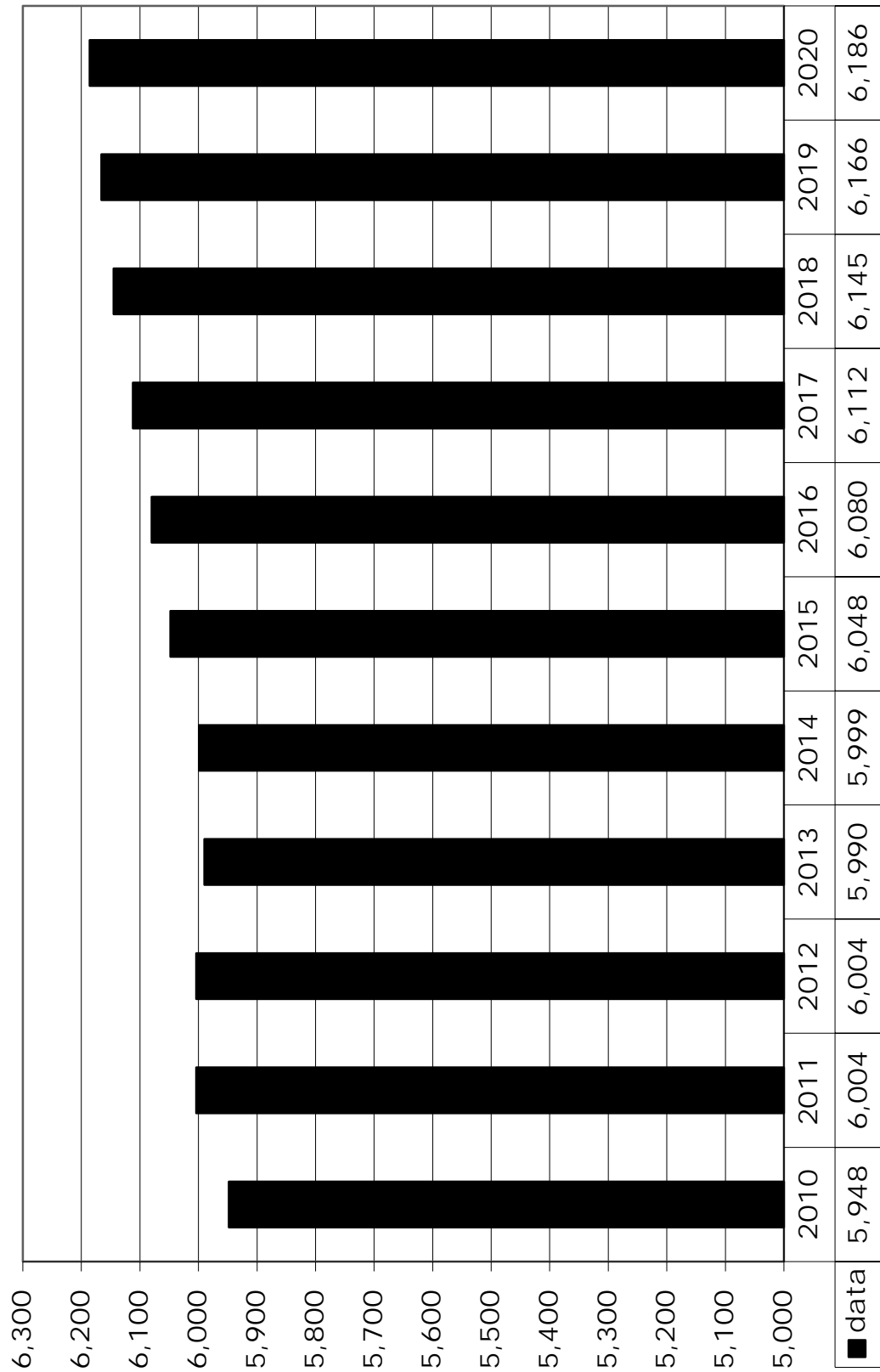
Existing School	State Capacity	Grades Served	Actual										
			2010	2011	2012	2013	2014	2015	2016	2017	2018	2019	2020
North County High ▲	2,246	9-12	1,940	1,972	1,948	1,909	1,911	1,908	1,927	1,957	1,981	1,979	1,989
Brooklyn Park Middle ▲	880	6-8	429	493	493	498	509	516	511	510	517	524	527
Lindale Middle ▲	1,334	6-8	822	803	809	812	829	843	838	833	838	854	857
Belle Grove Elem 1 ▲	206	PreK-5	199	183	180	177	170	168	169	170	170	170	170
Brooklyn Park Elem ▲	419	PreK-5	399	397	390	380	373	364	363	363	362	361	360
Ferndale Early Education Center ▲	136	PreK-K	121	118	120	120	119	119	119	119	119	119	119
George Cromwell Elem 2 ▲	322	1-5	242	253	255	271	277	289	292	292	291	290	289
Hilltop Elem ▲	631	PreK-5	530	550	548	560	547	559	565	568	569	572	577
Linthicum Elem ▲	455	K-5	407	397	399	395	391	391	400	402	403	405	407
North Glen Elem ▲	326	PreK-5	234	242	257	275	283	303	306	307	306	305	305
Overlook Elem 3 ▲	294	K-5	226	216	217	217	205	204	203	204	203	202	202
Park Elem ▲	493	PreK-5	399	380	388	376	385	384	387	387	386	385	384
<b>TOTALS</b>	<b>7,742</b>		<b>5,948</b>	<b>6,004</b>	<b>6,004</b>	<b>5,990</b>	<b>5,999</b>	<b>6,048</b>	<b>6,080</b>	<b>6,112</b>	<b>6,145</b>	<b>6,166</b>	<b>6,186</b>
<b>ELEM TOTALS</b>	<b>3,282</b>		<b>2,757</b>	<b>2,736</b>	<b>2,754</b>	<b>2,771</b>	<b>2,750</b>	<b>2,781</b>	<b>2,804</b>	<b>2,812</b>	<b>2,809</b>	<b>2,809</b>	<b>2,813</b>

▲ = Denotes school is located in Priority Funding Area

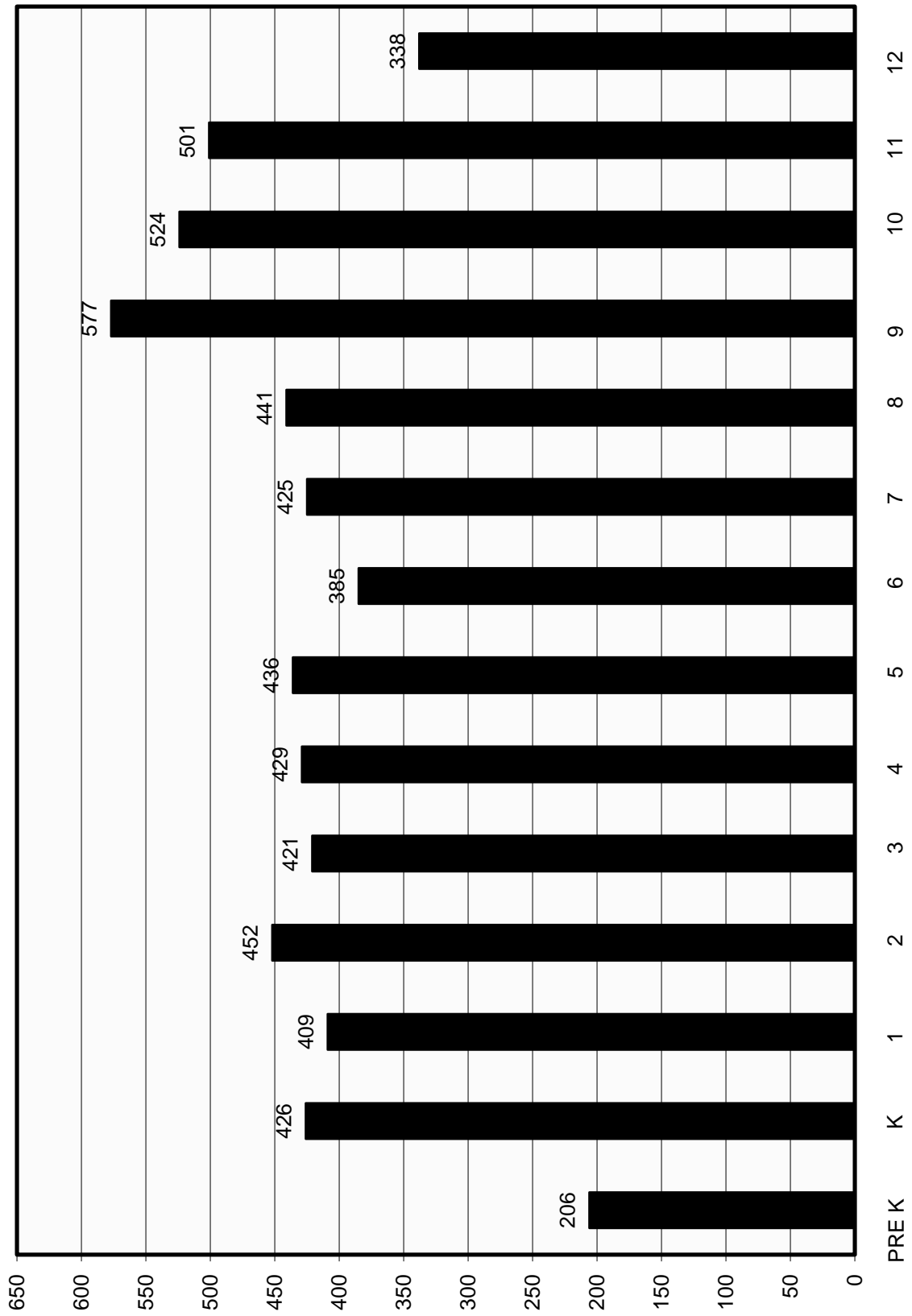
1. School Under Construction
2. Feasibility Study FY14
3. School Under Construction

# NORTH COUNTY FEEDER SYSTEM ENROLLMENT

## 2010 Actual, 2011-2020 Projected



# NORTH COUNTY FEEDER SYSTEM ACTUAL SEPTEMBER 2010 ENROLLMENT



# North County High School

**Geographic/Demographic Component:**<sup>1</sup> North County High School is located within census tracts 7504, 7503, 7505, 7506, 7507, 7508.01, 7501.01, 7501.02, 7502.01, 7502.02, 7502.03, and 7503.

**Zoning:**<sup>2</sup> Zoning in the North County attendance area is R-1 for the land designated for the Baltimore-Washington International Airport. Most of the western edge of this attendance area is zoned W1, Park industrial. The majority of the residential areas in North County are zoned R-5 with small pockets of R-15. Several areas along Ritchie Highway are zoned for commercial use. A large section along the Baltimore County line, which is zoned for open space, is known as the Patapsco Valley State Park.

**Sewer Service:**<sup>3</sup> Sewer service exists for most of this area. The Arundel Expressway area and the area adjacent to Nursery Road are in the planned service area. The areas north of the Baltimore Expressway and west of Nursery Road are in the no planned service area.

**Water Service:**<sup>3</sup> Water service exists for most of the area. The Nursery Road area is in the planned service area and the remaining western portion is in the future service area.

**Enrollment:** Enrollment for North County High will remain stable over the next ten years. The Maryland Department of Planning has identified this as an area of potential growth/turnover due to BRAC. (See Appendix “Q”).

**Planning:**<sup>6</sup> The 1997 Anne Arundel County General Development Plan (GDP) for this area was updated via the implementation of the Glen Burnie, BWI/Linthicum and Brooklyn Park Small Area Plans which went into effect on September 20, 2004, December 25, 2004 and October 28, 2004 respectively. The 2009 GDP was approved by the County Council on October 19, 2009.

## **Statistical Data:**<sup>1</sup>

Population of attendance area .....	33,227
Number in public schools (PreK-12) .....	6,052
Percent in public schools .....	18%
Percent non-white .....	25%
Average home value.....	\$180,000
Median income.....	\$55,414

**FACILITIES INVENTORY AND  
ENROLLMENT PROJECTIONS BY GRADE**

***NORTH COUNTY HIGH (Grade 9-12)  
10 E. 1st Avenue  
Glen Burnie***

*State-Rated Capacity: 2,246*

	ACTUAL	PROJECTED									
	2010	2011	2012	2013	2014	2015	2016	2017	2018	2019	2020
KDGN											
1											
2											
3											
4											
5											
6											
7											
8											
9	577	589	598	592	607	606	627	637	637	613	615
10	524	494	488	495	480	490	490	505	514	515	518
11	501	515	472	464	475	458	468	467	482	491	494
12	338	374	390	358	349	354	342	348	348	360	362
<b>Total</b>	<b>1,940</b>	<b>1,972</b>	<b>1,948</b>	<b>1,909</b>	<b>1,911</b>	<b>1,908</b>	<b>1,927</b>	<b>1,957</b>	<b>1,981</b>	<b>1,979</b>	<b>1,989</b>
<b>FTE</b>	<b>1,940</b>	<b>1,972</b>	<b>1,948</b>	<b>1,909</b>	<b>1,911</b>	<b>1,908</b>	<b>1,927</b>	<b>1,957</b>	<b>1,981</b>	<b>1,979</b>	<b>1,989</b>

Date of Occupancy: 1971  
 Addition/Renovation: 1993, 2004, 2007  
 Evaluation of physical condition - Good

Size of existing building: 331,764 sq.ft.  
 Acreage of site: 48.35 acres (Shares site with Hilltop Elem)

# Brooklyn Park Middle School

**Geographic/Demographic Component:**<sup>1</sup> Brooklyn Park Middle School is located within census tracts 7501.01, 7501.02, 7502.01, 7502.02 and 7502.03.

**Zoning:**<sup>2</sup> The Brooklyn Park Middle School attendance area is one of the most densely developed and urbanized areas of the county. Along with R-5 zoning, portions of R-15 create high-density pockets scattered throughout this attendance area. A concentration of commercial and retail zoning creates a central business district along Route 2. A buffer zone of open space along the banks of the Patapsco River forms the northern boundary of this attendance area with Baltimore County.

**Sewer Service:**<sup>3</sup> Sewer service exists for most of this area. The remaining areas are in the planned service area.

**Water Service:**<sup>3</sup> Water service exists for the entire area.

**Enrollment:** Enrollment is expected to increase due to the opening of the new Visual and Performing Arts Magnet opening in August of 2011.

**Planning:**<sup>6</sup> The 1997 Anne Arundel County General Development Plan (GDP) for this area was updated via the implementation of the Glen Burnie, BWI/Linthicum and Brooklyn Park Small Area Plans which went into effect on September 20, 2004, December 25, 2004 and October 28, 2004 respectively. The 2009 GDP was approved by the County Council on October 19, 2009.

**FACILITIES INVENTORY AND  
ENROLLMENT PROJECTIONS BY GRADE**

***BROOKLYN PARK MIDDLE (Grade 6-8)  
200 Hammonds Lane  
Baltimore***

*State-Rated Capacity: 880*

	ACTUAL	PROJECTED									
	2010	2011	2012	2013	2014	2015	2016	2017	2018	2019	2020
KDGN											
1											
2											
3											
4											
5											
6	125	225	219	227	232	232	224	228	237	236	237
7	143	125	132	129	134	136	136	131	134	139	140
8	161	143	142	142	143	148	151	151	146	149	150
9											
10											
11											
12											
<b>Total</b>	429	493	493	498	509	516	511	510	517	524	527
<b>FTE</b>	429	493	493	498	509	516	511	510	517	524	527

Date of original occupancy: 1954  
 Addition/Renovation: 1966, 2000  
 Evaluation of physical condition - Good

Size of existing building: 159,812 sq. ft.  
 (Total Complex: 248,809 sq. ft.)  
 Acreage of site: 44.15 acres

# Lindale Middle School

**Geographic/Demographic Component:**<sup>1</sup> Lindale Middle School is located within census tracts 7504, 7505, 7506, 7507, 7508.1, 7508.2, and 7512.

**Zoning:**<sup>2</sup> Zoning in the Lindale attendance area is R-1 for the land designated for the Baltimore-Washington International Airport. The northern and eastern portions of this attendance area are zoned predominately R-5 with small, scattered sections of high density R-15. Major commercial districts are located along Route 2. The western portion of this attendance area, located near the airport, is zoned for research and light industry. It is the focal point for this type of development (i.e. Westinghouse) in the northern portion of the county due to proximity to the airport.

**Sewer Service:**<sup>3</sup> Sewer service exists for most of this area. The Arundel Expressway area and the area adjacent to Nursery Road are in the planned service area. The areas north of the Baltimore Expressway and west of Nursery Road are in the no planned service area.

**Water Service:**<sup>3</sup> Water service exists for most of the area. The Nursery Road area is in the planned service area and the remaining western portion is in the future service area.

**Enrollment:** The enrollment increases slightly over the next ten years. This school will be hosting Belle Grove Elementary School during the construction of the new Belle Grove Elementary School.

**Planning:**<sup>6</sup> The 1997 Anne Arundel County General Development Plan (GDP) for this area was updated via the implementation of the Glen Burnie, BWI/Linthicum and Brooklyn Park Small Area Plans which went into effect on September 20, 2004, December 25, 2004 and October 28, 2004 respectively. The 2009 GDP was approved by the County Council on October 19, 2009.

**FACILITIES INVENTORY AND  
ENROLLMENT PROJECTIONS BY GRADE**

*LINDALE MIDDLE (Grade 6-8)  
415 Andover Road  
Linthicum*

*State-Rated Capacity: 1,334*

	ACTUAL	PROJECTED									
	2010	2011	2012	2013	2014	2015	2016	2017	2018	2019	2020
KDGN											
1											
2											
3											
4											
5											
6	260	261	253	262	268	268	258	263	273	272	273
7	282	260	275	269	279	284	284	274	280	290	291
8	280	282	281	281	282	291	296	296	285	292	293
9											
10											
11											
12											
<b>Total</b>	<b>822</b>	<b>803</b>	<b>809</b>	<b>812</b>	<b>829</b>	<b>843</b>	<b>838</b>	<b>833</b>	<b>838</b>	<b>854</b>	<b>857</b>
<b>FTE</b>	<b>822</b>	<b>803</b>	<b>809</b>	<b>812</b>	<b>829</b>	<b>843</b>	<b>838</b>	<b>833</b>	<b>838</b>	<b>854</b>	<b>857</b>

Date of original occupancy: 1961  
 Addition/Renovation: 1985, 1996  
 Evaluation of physical condition - Good

Size of existing building: 191,583 sq. ft.  
 Acreage of site: 38.47 acres

# Belle Grove Elementary School

**Geographic/Demographic Component:**<sup>1</sup> Belle Grove Elementary School is located within census tract 7501.02.

**Zoning:**<sup>2</sup> Zoning in the Belle Grove attendance area is predominately R-15, with a small portion south of Belle Grove Road zoned R-5.

**Sewer Service:**<sup>3</sup> Sewer service exists for all of the attendance area.

**Water Service:**<sup>3</sup> Water service exists for all of the attendance area.

**Development:** This area has not experienced residential development in the past four years.

**Enrollment:** Enrollment decreases slightly throughout the next ten years. Beginning in the summer of 2010, Belle Grove Elementary School will be replaced. Students will be sharing space at Lindale Middle School during the construction project.

**Planning:**<sup>6</sup> The 1997 Anne Arundel County General Development Plan (GDP) for this area was updated via the implementation of the Glen Burnie, BWI/Linthicum and Brooklyn Park Small Area Plans which went into effect on September 20, 2004, December 25, 2004 and October 28, 2004 respectively. The 2009 GDP was approved by the County Council on October 19, 2009.

**FACILITIES INVENTORY AND  
ENROLLMENT PROJECTIONS BY GRADE**

***BELLE GROVE ELEMENTARY (Grade PreK-5)  
4502 Belle Grove Road at 5th Avenue  
Baltimore***

*State-Rated Capacity: 206*

	ACTUAL	PROJECTED									
	2010	2011	2012	2013	2014	2015	2016	2017	2018	2019	2020
KDGN	24	23	24	24	24	24	24	24	24	24	24
1	27	24	24	25	25	25	25	25	25	25	25
2	31	27	24	24	25	25	25	25	25	25	25
3	28	31	27	24	24	25	25	25	25	25	25
4	28	28	32	27	24	24	25	25	25	25	25
5	40	29	28	32	27	24	24	25	25	25	25
6											
7											
8											
9											
10											
11											
12											
PreK	21	21	21	21	21	21	21	21	21	21	21
<b>Total</b>	<b>199</b>	<b>183</b>	<b>180</b>	<b>177</b>	<b>170</b>	<b>168</b>	<b>169</b>	<b>170</b>	<b>170</b>	<b>170</b>	<b>170</b>
<b>FTE</b>	<b>199</b>	<b>183</b>	<b>180</b>	<b>177</b>	<b>170</b>	<b>168</b>	<b>169</b>	<b>170</b>	<b>170</b>	<b>170</b>	<b>170</b>

Date of Occupancy: 1952  
 Evaluation of physical condition - Fair  
***School Under Construction***

Size of existing building: 31,850 sq.ft.  
 Acreage of site: 7.45 acres

# Brooklyn Park Elementary School

**Geographic/Demographic Component:**<sup>1</sup> Brooklyn Park Elementary School is located within census tracts 7502.01 and 7502.02.

**Zoning:**<sup>2</sup> Brooklyn Park Elementary attendance area is zoned R-5 in the major portion of the area with clusters of R-15 located along Hammonds Lane and Route 648. The area also has various retail and commercial districts, located along Route 2. Light industrial zoning exists along Belle Grove Road.

**Sewer Service:**<sup>3</sup> Sewer service exists for most of this area. The remaining areas are in the planned service area.

**Water Service:**<sup>3</sup> Water service exists for the entire area.

**Development:** This area has experienced a low rate of residential development in the past four years.

**Enrollment:** Enrollment decreases slightly through 2020.

**Planning:**<sup>6</sup> The 1997 Anne Arundel County General Development Plan (GDP) for this area was updated via the implementation of the Glen Burnie, BWI/Linthicum and Brooklyn Park Small Area Plans which went into effect on September 20, 2004, December 25, 2004 and October 28, 2004 respectively. The 2009 GDP was approved by the County Council on October 19, 2009.

**FACILITIES INVENTORY AND  
ENROLLMENT PROJECTIONS BY GRADE**

***BROOKLYN PARK ELEMENTARY SCHOOL (Grade PreK-5)***  
***200 14th Avenue***  
***Baltimore***

*State-Rated Capacity: 419*

	ACTUAL	PROJECTED									
	2010	2011	2012	2013	2014	2015	2016	2017	2018	2019	2020
KDGN	58	54	56	56	55	55	55	55	55	55	55
1	66	60	57	59	59	58	58	58	58	58	58
2	63	65	59	57	59	59	58	58	58	58	57
3	65	64	66	59	58	59	59	58	58	58	58
4	68	69	66	67	59	58	59	59	58	58	58
5	63	69	70	66	67	59	58	59	59	58	58
6											
7											
8											
9											
10											
11											
12											
PreK	32	32	32	32	32	32	32	32	32	32	32
<b>Total</b>	<b>415</b>	<b>413</b>	<b>406</b>	<b>396</b>	<b>389</b>	<b>380</b>	<b>379</b>	<b>379</b>	<b>378</b>	<b>377</b>	<b>376</b>
<b>FTE</b>	<b>399</b>	<b>397</b>	<b>390</b>	<b>380</b>	<b>373</b>	<b>364</b>	<b>363</b>	<b>363</b>	<b>362</b>	<b>361</b>	<b>360</b>

Date of Occupancy: 1972  
Evaluation of physical condition - Fair

Size of existing building: 74,540 sq.ft.  
Acreage of site: 12.22 acres

# Ferndale Early Education Center

**Geographic/Demographic Component:**<sup>1</sup> The Ferndale Early Education Center is located within census tract 7508.01. This attendance area lies adjacent to the Baltimore-Washington International Airport.

**Zoning:**<sup>2</sup> Zoning in the Ferndale area is predominately R-5, with commercial zoning along Route 648.

**Sewer Service:**<sup>3</sup> Sewer service exists for all of the attendance area.

**Water Service:**<sup>3</sup> Water service exists for all of the attendance area.

**Enrollment:** Enrollment is projected to remain stable through 2020. The facility provides kindergarten for students from the George Cromwell Elementary School attendance area and PreK services for eligible students from George Cromwell Elementary School.

**Planning:**<sup>6</sup> The 1997 Anne Arundel County General Development Plan (GDP) for this area was updated via the implementation of the Glen Burnie, BWI/Linthicum and Brooklyn Park Small Area Plans which went into effect on September 20, 2004, December 25, 2004 and October 28, 2004 respectively. The 2009 GDP was approved by the County Council on October 19, 2009.

**FACILITIES INVENTORY AND  
ENROLLMENT PROJECTIONS BY GRADE**

***FERNDALE EARLY EDUCATION CENTER (Grade PreK-K)  
105 Packard Avenue at Hollins Ferry Road  
Glen Burnie***

*State-Rated Capacity: 136*

	ACTUAL	PROJECTED									
	2010	2011	2012	2013	2014	2015	2016	2017	2018	2019	2020
KDGN	57	54	56	56	55	55	55	55	55	55	55
1											
2											
3											
4											
5											
6											
7											
8											
9											
10											
11											
12											
PreK	59	59	59	59	59	59	59	59	59	59	59
ECI	10	10	10	10	10	10	10	10	10	10	10
<b>Total</b>	<b>126</b>	<b>123</b>	<b>125</b>	<b>125</b>	<b>124</b>	<b>124</b>	<b>124</b>	<b>124</b>	<b>124</b>	<b>124</b>	<b>124</b>
<b>FTE</b>	<b>121</b>	<b>118</b>	<b>120</b>	<b>120</b>	<b>119</b>	<b>119</b>	<b>119</b>	<b>119</b>	<b>119</b>	<b>119</b>	<b>119</b>

Date of Occupancy: 1962  
 Addition/Renovation: 2003, 2007  
 Evaluation of physical condition -Excellent

Size of existing building: 24,076 sq.ft.  
 Acreage of site: 2.39 acres

# George Cromwell Elementary School

**Geographic/Demographic Component:**<sup>1</sup> George Cromwell Elementary School is located within census tract 7508.02.

**Zoning:**<sup>2</sup> Zoning in the George Cromwell attendance area is R-5.

**Sewer Service:**<sup>3</sup> Sewer service exists for all of the attendance area.

**Water Service:**<sup>3</sup> Water service exists for all of the attendance area.

**Enrollment:** Enrollment is projected to increase through 2020. Kindergarten and eligible PreK students from George Cromwell Elementary School attend the Ferndale Early Education Center.

**Planning:**<sup>6</sup> The 1997 Anne Arundel County General Development Plan (GDP) for this area was updated via the implementation of the Glen Burnie, BWI/Linthicum and Brooklyn Park Small Area Plans which went into effect on September 20, 2004, December 25, 2004 and October 28, 2004 respectively. The 2009 GDP was approved by the County Council on October 19, 2009.

**FACILITIES INVENTORY AND  
ENROLLMENT PROJECTIONS BY GRADE**

***GEORGE CROMWELL ELEMENTARY (Grade 1-5)***  
*525 Wellham Avenue*  
*Glen Burnie*

*State-Rated Capacity: 322*

	ACTUAL	PROJECTED									
	2010	2011	2012	2013	2014	2015	2016	2017	2018	2019	2020
KDGN											
1	47	56	57	59	59	58	58	58	58	58	58
2	53	46	55	57	59	59	58	58	58	58	57
3	43	53	46	55	58	59	59	58	58	58	58
4	54	43	54	46	55	58	59	59	58	58	58
5	45	55	43	54	46	55	58	59	59	58	58
6											
7											
8											
9											
10											
11											
12											
<b>Total</b>	<b>242</b>	<b>253</b>	<b>255</b>	<b>271</b>	<b>277</b>	<b>289</b>	<b>292</b>	<b>292</b>	<b>291</b>	<b>290</b>	<b>289</b>
<b>FTE</b>	<b>242</b>	<b>253</b>	<b>255</b>	<b>271</b>	<b>277</b>	<b>289</b>	<b>292</b>	<b>292</b>	<b>291</b>	<b>290</b>	<b>289</b>

Date of Occupancy: 1964  
Evaluation of physical condition - Fair  
***Feasibility Study FY14***

Size of existing building: 42,110 sq.ft.  
Acreage of site: 16.54 Acres

# Hilltop Elementary School

**Geographic/Demographic Component:**<sup>1</sup> Hilltop Elementary School is located within census tracts 7504, 7508.01, and 7508.02.

**Zoning:**<sup>2</sup> Zoning in the Hilltop attendance area is R-5 in the major portion and R-15 in the portion between the Baltimore Beltway 695 and Route 2. Housing types range from single family to townhouse clusters and garden apartments.

**Sewer Service:**<sup>3</sup> Sewer service exists for all of the attendance area.

**Water Service:**<sup>3</sup> Water service exists for all of the attendance area.

**Development:** This area has experienced a low rate of residential development in the past four years.

**Enrollment:** Enrollment increases through 2020. Pre-kindergarten students from this area are transported to the Ferndale Early Education Center.

**Planning:**<sup>6</sup> The 1997 Anne Arundel County General Development Plan (GDP) for this area was updated via the implementation of the Glen Burnie, BWI/Linthicum and Brooklyn Park Small Area Plans which went into effect on September 20, 2004, December 25, 2004 and October 28, 2004 respectively. The 2009 GDP was approved by the County Council on October 19, 2009.

**FACILITIES INVENTORY AND  
ENROLLMENT PROJECTIONS BY GRADE**

***HILLTOP ELEMENTARY (Grade PreK-5)***  
***415 Melrose Avenue***  
***Glen Burnie***

*State-Rated Capacity: 631*

	ACTUAL	PROJECTED									
	2010	2011	2012	2013	2014	2015	2016	2017	2018	2019	2020
KDGN	89	85	88	88	86	87	88	89	90	91	91
1	78	86	89	93	93	91	92	93	94	95	96
2	102	77	85	89	93	92	90	91	92	93	94
3	80	103	78	86	90	93	92	90	91	92	93
4	96	81	106	79	86	90	93	92	90	91	92
5	65	98	82	105	79	86	90	93	92	90	91
6											
7											
8											
9											
10											
11											
12											
PreK	20	20	20	20	20	20	20	20	20	20	20
<b>Total</b>	<b>530</b>	<b>550</b>	<b>548</b>	<b>560</b>	<b>547</b>	<b>559</b>	<b>565</b>	<b>568</b>	<b>569</b>	<b>572</b>	<b>577</b>
<b>FTE</b>	<b>530</b>	<b>550</b>	<b>548</b>	<b>560</b>	<b>547</b>	<b>559</b>	<b>565</b>	<b>568</b>	<b>569</b>	<b>572</b>	<b>577</b>

Date of Occupancy: 1970  
Addition/Renovation: 1996, 2000, 2010  
Evaluation of physical condition - Good

Size of existing building: 82,903 sq.ft.  
Acreage of site: 20 (Shares site with  
North County Senior)  
Current Relocatables: 4

# Linthicum Elementary School

**Geographic/Demographic Component:**<sup>1</sup> Linthicum Elementary School is located within census tracts 7504, 7508.01, and 7508.02.

**Zoning:**<sup>2</sup> Zoning in the Linthicum attendance area is predominately R-5 in the eastern and central sections. There is a great deal of WI and R-1 zoning in the western portion of census tract 7505.

**Sewer Service:**<sup>3</sup> Sewer service exists for most of this area. The Arundel Expressway area and the area adjacent to Nursery Road are in the planned service area. The areas north of the Baltimore Expressway and west of Nursery Road are in the no planned service area.

**Water Service:**<sup>3</sup> Water service exists for all of the attendance area.

**Enrollment:** Enrollment remains stable through 2020.

**Planning:**<sup>6</sup> The 1997 Anne Arundel County General Development Plan (GDP) for this area was updated via the implementation of the Glen Burnie, BWI/Linthicum and Brooklyn Park Small Area Plans which went into effect on September 20, 2004, December 25, 2004 and October 28, 2004 respectively. The 2009 GDP was approved by the County Council on October 19, 2009.

**FACILITIES INVENTORY AND  
ENROLLMENT PROJECTIONS BY GRADE**

***LINTHICUM ELEMENTARY (Grade K-5)  
101 School Lane at Camp Meade Road  
Linthicum Heights***

*State-Rated Capacity: 455*

	ACTUAL	PROJECTED									
	2010	2011	2012	2013	2014	2015	2016	2017	2018	2019	2020
KDGN	62	62	64	64	63	64	65	65	65	66	66
1	66	60	65	68	68	66	67	68	69	69	69
2	70	65	59	65	68	68	66	67	68	69	68
3	70	71	66	59	66	68	68	66	67	68	69
4	67	71	73	67	59	66	68	68	66	67	68
5	72	68	72	72	67	59	66	68	68	66	67
6											
7											
8											
9											
10											
11											
12											
<b>Total</b>	<b>407</b>	<b>397</b>	<b>399</b>	<b>395</b>	<b>391</b>	<b>391</b>	<b>400</b>	<b>402</b>	<b>403</b>	<b>405</b>	<b>407</b>
<b>FTE</b>	<b>407</b>	<b>397</b>	<b>399</b>	<b>395</b>	<b>391</b>	<b>391</b>	<b>400</b>	<b>402</b>	<b>403</b>	<b>405</b>	<b>407</b>

Date of Occupancy: 1971  
 Addition/Renovation: 1973, 2004  
 Evaluation of physical condition - Good

Size of existing building: 71,682 sq.ft.  
 Acreage of site: 8.04 acres  
 Current Relocatables: 1

# North Glen Elementary School

**Geographic/Demographic Component:**<sup>1</sup> North Glen Elementary School is located within the census tracts 7502.03, 7508.02, and 7512.

**Zoning:**<sup>2</sup> Zoning in the North Glen attendance area is R-5 in the eastern portion, which forms the heart of the attendance area. There is an area of R-15, providing garden apartment communities along Furnace Branch Road at Crain Highway . The central portion is zoned for commercial development, lying along both sides of Route 2. Several large commercial establishments form a buffer to the higher density zoning of R-15, located at the corner of Ordnance Road and Route 10 (Arundel Expressway). To the north, the community of Morris Hills is zoned R-15, and provides the only single family development situated east of Route 2. There is a zoned tract WI located southeast of the Arundel Expressway.

**Sewer Service:**<sup>3</sup> Sewer service exists for all of the attendance area.

**Water Service:**<sup>3</sup> Water service exists for all of the attendance area.

**Enrollment:** Enrollment is projected to increase through 2020.

**Planning:**<sup>6</sup> The 1997 Anne Arundel County General Development Plan (GDP) for this area was updated via the implementation of the Glen Burnie, BWI/Linthicum and Brooklyn Park Small Area Plans which went into effect on September 20, 2004, December 25, 2004 and October 28, 2004 respectively. The 2009 GDP was approved by the County Council on October 19, 2009.

**FACILITIES INVENTORY AND  
ENROLLMENT PROJECTIONS BY GRADE**

***NORTH GLEN ELEMENTARY (Grade PreK-5)  
615 Furnace Branch Road  
Glen Burnie***

*State-Rated Capacity: 326*

	ACTUAL	PROJECTED									
	2010	2011	2012	2013	2014	2015	2016	2017	2018	2019	2020
KDGN	46	44	46	46	45	45	45	45	45	45	45
1	28	45	46	49	49	47	47	47	48	48	47
2	39	27	44	46	49	49	47	47	47	48	48
3	31	39	27	44	46	49	49	47	47	47	48
4	32	31	40	27	44	46	49	49	47	47	47
5	35	33	31	40	27	44	46	49	49	47	47
6											
7											
8											
9											
10											
11											
12											
PreK	34	34	34	34	34	34	34	34	34	34	34
ECI	12	12	12	12	12	12	12	12	12	12	12
<b>Total</b>	<b>257</b>	<b>265</b>	<b>280</b>	<b>298</b>	<b>306</b>	<b>326</b>	<b>329</b>	<b>330</b>	<b>329</b>	<b>328</b>	<b>328</b>
<b>FTE</b>	<b>234</b>	<b>242</b>	<b>257</b>	<b>275</b>	<b>283</b>	<b>303</b>	<b>306</b>	<b>307</b>	<b>306</b>	<b>305</b>	<b>305</b>

Date of Occupancy: 1959  
Evaluation of physical condition - Good

Size of existing building: 43,565 sq.ft.  
Acreage of site: 15 acres  
Current Relocatables: 2

# Overlook Elementary School

**Geographic/Demographic Component:**<sup>1</sup> Overlook Elementary School is located within census tracts 7503, 7504, and 7505.

**Zoning:**<sup>2</sup> Zoning in the Overlook attendance area is open space in the northern portion along the banks of the Patapsco River. The western portion has R-1 zoning and is sparsely populated. The central portion, i.e., the heart of the attendance area, is zoned R-5. The eastern section is zoned for light industry.

**Sewer Service:**<sup>3</sup> Sewer service exists for the central and eastern portions of the area. The northern portion is in the planned service area and the western portion is in the no planned service.

**Water Service:**<sup>3</sup> Water service exists for the central and eastern portions of the area. The northern portion is in the planned service area and the western portion is in the no planned service.

**Enrollment:** Enrollment will decline slightly through 2020.

**Planning:**<sup>6</sup> The 1997 Anne Arundel County General Development Plan (GDP) for this area was updated via the implementation of the Glen Burnie, BWI/Linthicum and Brooklyn Park Small Area Plans which went into effect on September 20, 2004, December 25, 2004 and October 28, 2004 respectively. The 2009 GDP was approved by the County Council on October 19, 2009.

**FACILITIES INVENTORY AND  
ENROLLMENT PROJECTIONS BY GRADE**

***OVERLOOK ELEMENTARY (Grade K-5)***  
***401 Hampton Road***  
***N. Linthicum***

*State-Rated Capacity: 294*

	ACTUAL	PROJECTED									
	2010	2011	2012	2013	2014	2015	2016	2017	2018	2019	2020
KDGN	33	32	33	33	32	32	32	32	32	32	32
1	36	35	33	35	35	34	34	34	34	34	34
2	45	35	35	33	35	35	34	34	34	34	34
3	35	45	35	35	33	35	35	34	34	34	34
4	33	35	46	35	35	33	35	35	34	34	34
5	44	34	35	46	35	35	33	35	35	34	34
6											
7											
8											
9											
10											
11											
12											
<b>Total</b>	<b>226</b>	<b>216</b>	<b>217</b>	<b>217</b>	<b>205</b>	<b>204</b>	<b>203</b>	<b>204</b>	<b>203</b>	<b>202</b>	<b>202</b>
<b>FTE</b>	<b>226</b>	<b>216</b>	<b>217</b>	<b>217</b>	<b>205</b>	<b>204</b>	<b>203</b>	<b>204</b>	<b>203</b>	<b>202</b>	<b>202</b>

Date of Occupancy: 1955  
 Addition/Renovation: 1958  
 Evaluation of physical condition - Fair  
***School Under Construction***

Size of existing building: 41,154 sq.ft.  
 Acreage of site: 11.6 acres

# Park Elementary School

**Geographic/Demographic Component:**<sup>1</sup> Park Elementary School is located within census tracts 7501.01 and 7502.03.

**Zoning:**<sup>2</sup> Zoning in the Park attendance area is predominately R-5. A small portion is zoned R-15. In addition, the area has a mixture of retail and commercial districts. An area adjacent to the school is zoned open space and has been designated for park and recreation use.

**Sewer Service:**<sup>3</sup> Sewer service exists for all of the attendance area.

**Water Service:**<sup>3</sup> Water service exists for all of the attendance area.

**Development:** The Cedar Hill Planned Unit Development (PUD) has received partial approval. With over 1,000 units planned, this PUD could have a significant impact on enrollment.

**Enrollment:** Enrollments may increase substantially with the build-out of the Cedar Hill PUD.

**Planning:**<sup>6</sup> The 1997 Anne Arundel County General Development Plan (GDP) for this area was updated via the implementation of the Glen Burnie, BWI/Linthicum and Brooklyn Park Small Area Plans which went into effect on September 20, 2004, December 25, 2004 and October 28, 2004 respectively. The 2009 GDP was approved by the County Council on October 19, 2009.

**FACILITIES INVENTORY AND  
ENROLLMENT PROJECTIONS BY GRADE**

***PARK ELEMENTARY (Grade PreK-5)  
201 East 11th Avenue  
Baltimore***

*State-Rated Capacity: 493*

	ACTUAL	PROJECTED									
	2010	2011	2012	2013	2014	2015	2016	2017	2018	2019	2020
KDGN	57	54	56	56	55	55	55	55	55	55	55
1	61	56	57	59	59	58	58	58	58	58	58
2	49	59	55	57	59	59	58	58	58	58	57
3	69	49	59	55	58	59	59	58	58	58	58
4	51	70	50	59	55	58	59	59	58	58	58
5	72	52	71	50	59	55	58	59	59	58	58
6											
7											
8											
9											
10											
11											
12											
PreK	40	40	40	40	40	40	40	40	40	40	40
<b>Total</b>	<b>399</b>	<b>380</b>	<b>388</b>	<b>376</b>	<b>385</b>	<b>384</b>	<b>387</b>	<b>387</b>	<b>386</b>	<b>385</b>	<b>384</b>
<b>FTE</b>	<b>399</b>	<b>380</b>	<b>388</b>	<b>376</b>	<b>385</b>	<b>384</b>	<b>387</b>	<b>387</b>	<b>386</b>	<b>385</b>	<b>384</b>

Date of Occupancy: 1996  
Original Building Occupied: 1943  
Evaluation of physical condition - Good

Size of existing building: 68,779 sq.ft.  
Acreage of site: 6 acres  
Current Relocatables: 1