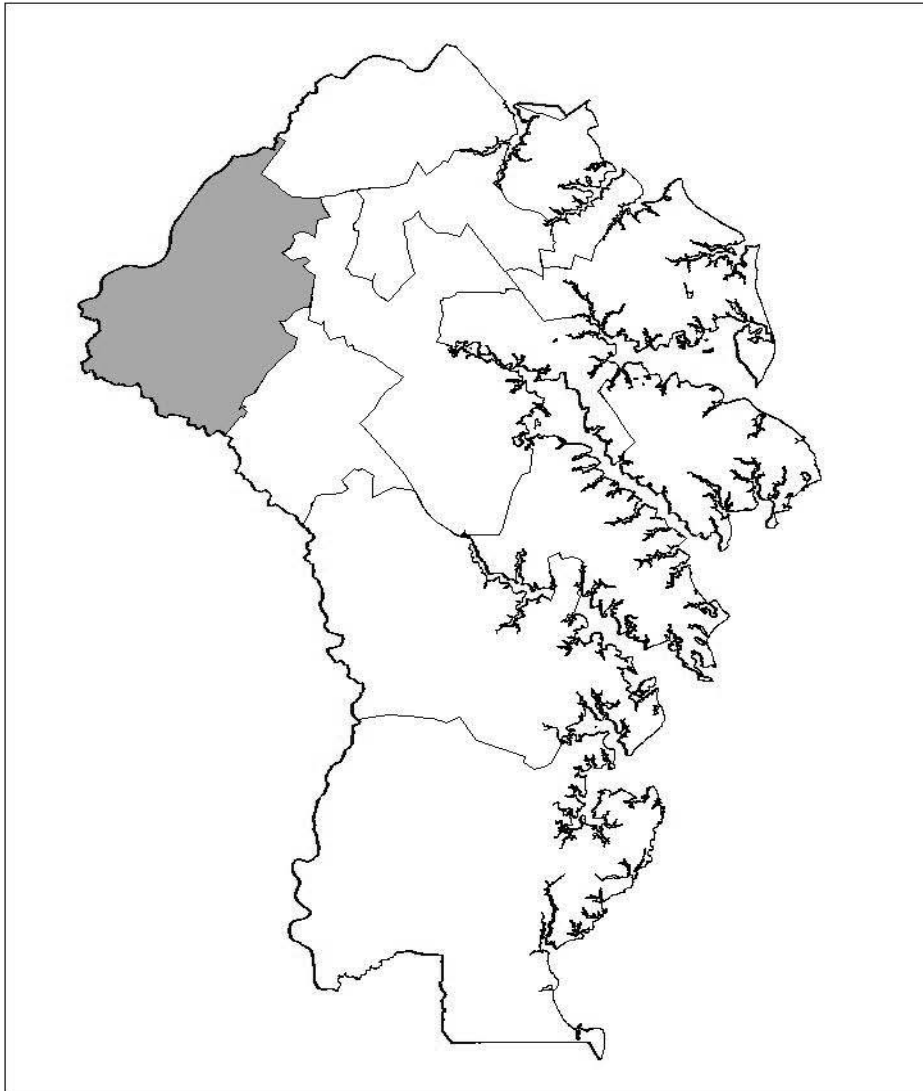
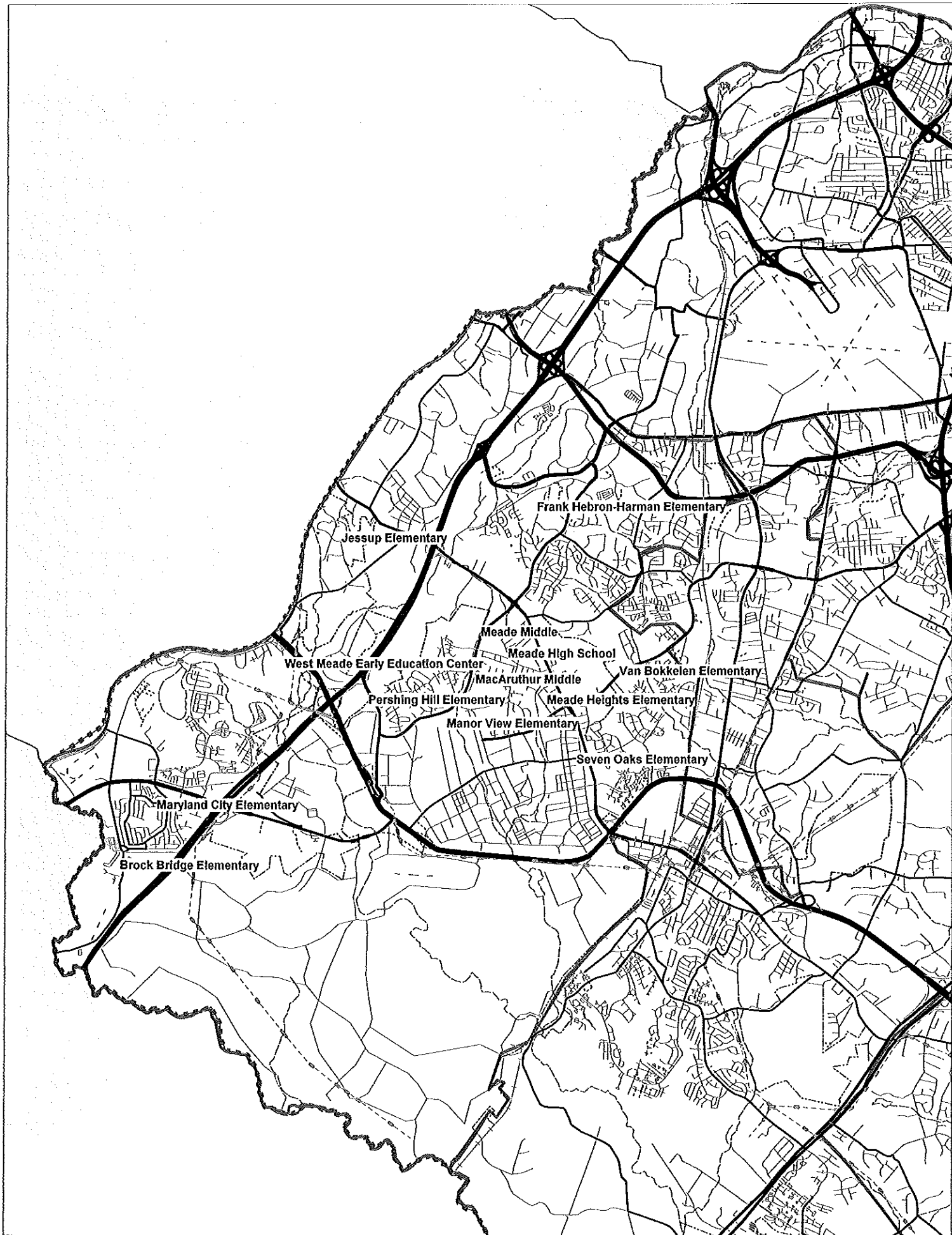


MEADE FEEDER SYSTEM



Meade High School (9-12)
MacArthur Middle (6-8)
Frank Hebron-Harman Elementary (PreK-5)
Manor View Elementary (1-5)
Maryland City Elementary (PreK-5)
Meade Heights Elementary (PreK-5)
Pershing Hill Elementary (1-5)
Seven Oaks Elementary (PreK-5)
West Meade Early Education Center (PreK-K)

Meade High School (9-12)
Meade Middle (6-8)
Brock Bridge Elementary (K-5)
Jessup Elementary (PreK-5)
Van Bokkelen Elementary (PreK-5)



FACILITIES/ENROLLMENT COMPARISON MEADE FEEDER SYSTEM

		PRESENT AND PROJECTED FTE ENROLLMENT												
Existing School	State Capacity	Grades Served	Actual											
			2010	2011	2012	2013	2014	2015	2016	2017	2018	2019	2020	
Meade High ▲	2,208	9-12	2,285	2,322	2,295	2,244	2,245	2,240	2,260	2,293	2,322	2,322	2,322	2,333
MacArthur Middle ▲	1,388	6-8	1,194	1,287	1,295	1,302	1,330	1,351	1,342	1,335	1,347	1,372	1,372	1,378
Meade Middle ▲	996	6-8	689	682	688	691	706	717	713	708	714	728	728	731
Brock Bridge Elem 1	537	K-5	644	655	678	702	729	738	743	747	748	752	752	756
Hebron-Harman Elem ▲	686	PreK-5	653	660	664	690	691	668	671	675	676	679	679	683
Jessup Elem 2 ▲	526	PreK-5	430	435	435	429	430	427	432	434	435	437	437	439
Manor View Elem 3 ▲ *	549	1-5	608	437	499	526	532	552	549	544	540	536	536	529
Maryland City Elem ▲	392	PreK-5	382	406	439	451	460	481	487	491	493	497	497	500
Meade Heights Elem ▲	514	PreK-5	278	270	256	244	240	220	227	227	226	225	225	225
Pershing Hill Elem 4 ▲ *	297	1-5	197	543	557	555	570	574	577	587	591	605	605	617
Seven Oaks Elem ▲	633	PreK-5	584	585	581	583	576	543	548	550	551	554	554	559
Van Bokkelen Elem ▲	644	PreK-5	392	416	440	459	492	506	511	514	515	518	518	521
West Meade EEC ▲ *	177	PreK-5	394	255	263	263	258	260	262	264	265	267	267	268
TOTALS	9,547		8,730	8,953	9,090	9,139	9,259	9,277	9,322	9,369	9,423	9,492	9,492	9,539
ELEM TOTALS	4,955		4,562	4,662	4,812	4,902	4,978	4,969	5,007	5,033	5,040	5,070	5,070	5,097

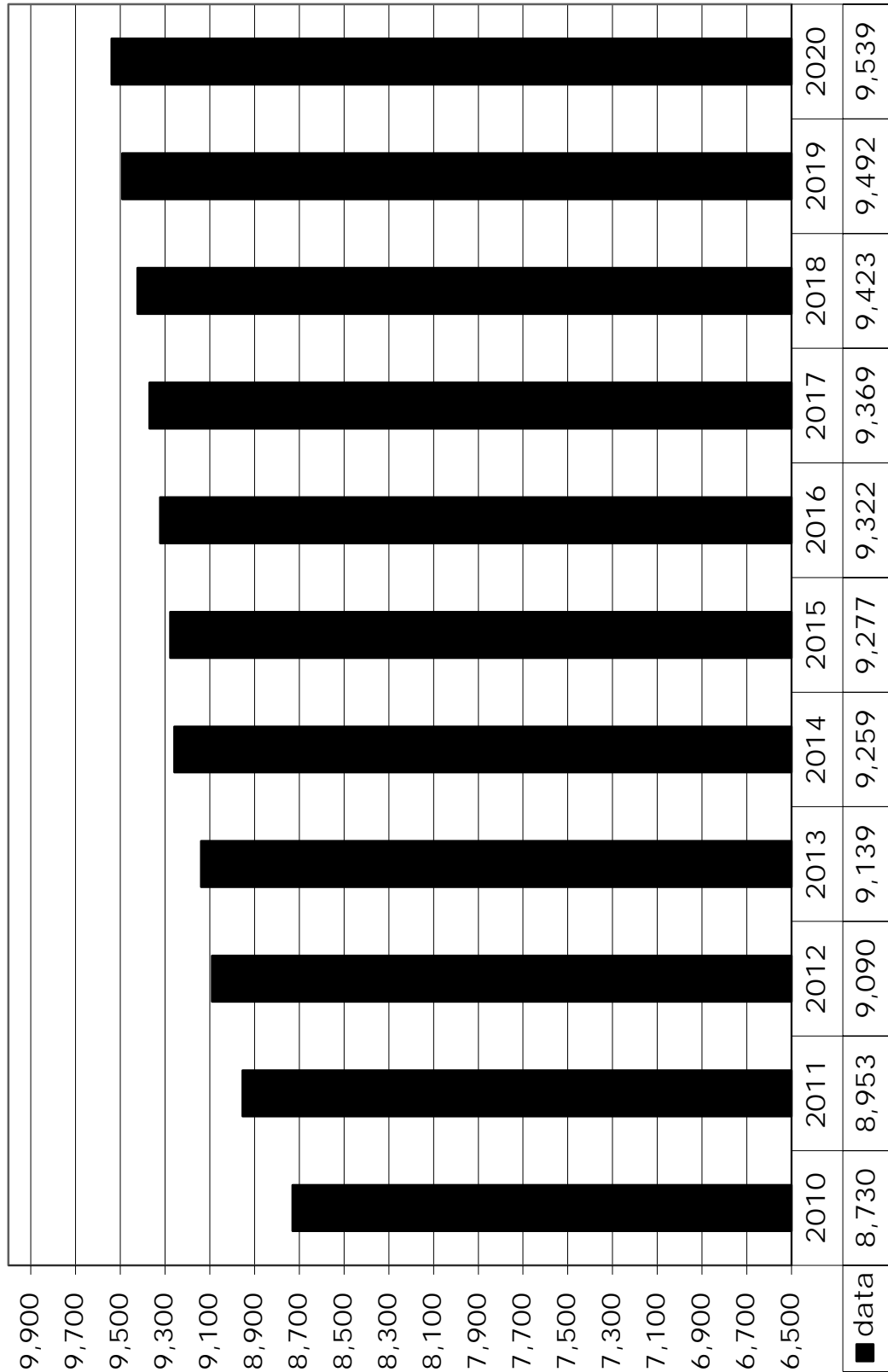
▲ = Denotes school is located in Priority Funding Area

- 1. Feasibility Study FY17
- 2. Feasibility Study FY14
- 3. Feasibility Study FY14
- 4. School Under Construction

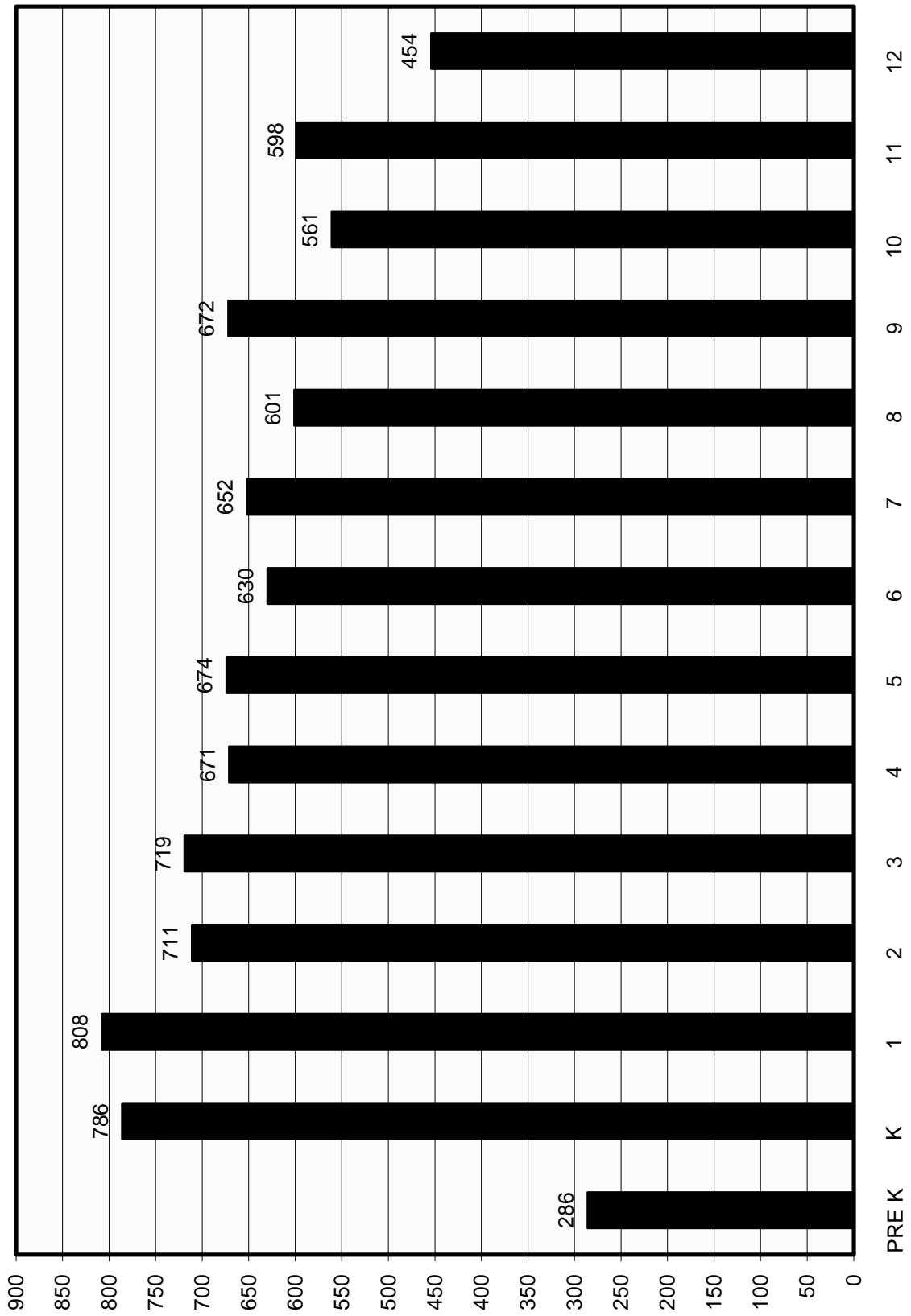
*Reflects Approved Redistricting of April 6, 2011 (See Appendix "R")

MEADE FEEDER SYSTEM ENROLLMENT

2010 Actual, 2011-2020 Projected



MEADE FEEDER SYSTEM ACTUAL SEPTEMBER 2010 ENROLLMENT



Meade High School

Geographic/Demographic Component:¹ Meade High School is located within census tracts 7401.02, 7403.01, 7404, 7405, 7406.01, and 7411.

Zoning:² The attendance area encompasses the Fort George G. Meade Military Base and residential areas north, northeast, and west of the post. The lower portion of the base, below the Little Patuxent River, is zoned RLD. To the north and northeast of the post zoning is primarily R-1 with areas of R-2, R-5, and R-15 Ridgefield, Provinces, and Pioneer City areas respectively. To the west zoning is of a higher density of R-5, R-10, and R-15 (Russett Center). Light to heavy industrial zoning exists along Rte 32. Several commercial zoning areas exist along Rte 198.

Sewer Service:³ Sewer service exists for all of Fort Meade, Maryland City, and the area south of Route 198. Sewer service in the Disney Road and Reece Road areas. The northern and western portions of the area are in the no planned service area. The remaining in-fill portions are in the planned service area.

Water Service:³ Water service exists for all of Fort Meade, Maryland City, and the area south of Route 198. Water service in the Disney Road and Reece Road areas. The northern and western portions of the area are in the no planned service area. The remaining in-fill portions are in the planned service area.

Development: Several large developments have been constructed or are planned within this feeder, including: Russett, Dorchester, Arundel Preserve, and Parkside (Blobs Park). Redistricting adopted by the Board of Education on April 24, 2007, also moved the Planned Unit Development of Seven Oaks into this feeder. The Meade Feeder System has been identified by the Maryland Department of Planning as a possible area of substantial growth due to BRAC. (See Appendix “Q”).

Enrollment: Redistricting adopted on April 24, 2007, moved Seven Oaks to this feeder. This will cause enrollment to increase over the next six years. The establishment of a Regional International Baccalaureate Program, as well as an influx of students from BRAC, may cause a significant increase through 2020. Enrollment has also been impacted through the creation of a Regional IB Program.

Planning:⁶ The 1997 Anne Arundel County General Development Plan (GDP) for this area was updated via the implementation of the Jessup/Maryland City, Severn and Odenton Small Area Plans which went into effect on April 8, 2004, September 6, 2002 and November 6, 2003 respectively. The 2009 GDP was approved by the County Council on October 19, 2009.

Statistical Data:¹

Population of attendance area.....	36,423
Number in public schools (PreK-12).....	7,633
Percent in public schools	21%
Percent non-white	64%
Average home value	\$305,000
Median income	\$76,215

**FACILITIES INVENTORY AND
ENROLLMENT PROJECTIONS BY GRADE**

*MEADE HIGH (Grade 9-12)
1100 Clark Road
Ft. George G. Meade*

State-Rated Capacity: 2,208

	ACTUAL	PROJECTED									
	2010	2011	2012	2013	2014	2015	2016	2017	2018	2019	2020
KDGN											
1											
2											
3											
4											
5											
6											
7											
8											
9	672	676	686	680	697	695	719	730	731	704	707
10	561	529	523	530	514	524	524	540	550	550	552
11	598	614	562	553	565	545	557	555	573	584	587
12	454	503	524	481	469	476	460	468	468	484	487
Total	2,285	2,322	2,295	2,244	2,245	2,240	2,260	2,293	2,322	2,322	2,333
FTE	2,285	2,322	2,295	2,244	2,245	2,240	2,260	2,293	2,322	2,322	2,333

Date of Occupancy: 1977
 Addition/Renovation: 2008
 Evaluation of physical condition - Fair

Size of existing building: 330,900 sq.ft.
 Acreage of site: 56.25
 Current Relocatables: 8

MacArthur Middle School

Geographic/Demographic Component:¹ MacArthur Middle School is located within census tracts 7401.01, 7401.02, 7402.02, 7404, 7405, 7406 and 7506.

Zoning:² The attendance area encompasses the Fort George G. Meade Military Base and residential areas north, northeast, and west of the post. The lower portion of the base, below the Little Patuxent River, is zoned RLD. To the north and northeast of the post zoning is primarily R-1 with areas of R-2, R-5, and R-15, Ridgefield, Provinces and Pioneer City areas respectively. Light to heavy industrial zoning exists along Rte 32. Several commercial zoning areas exist along Rte 198.

Sewer Service:³ Sewer service exists for all of Fort Meade, Maryland City, and the area south of Route 198. Sewer service in the Disney Road and Reece Road areas. The northern and western portions of the area are in the no planned service area. The remaining in-fill portions are in the planned service area.

Water Service:³ Water service exists for all of Fort Meade, Maryland City, and the area south of Route 198. Water service in the Disney Road and Reece Road areas. The northern and western portions of the area are in the no planned service area. The remaining in-fill portions are in the planned service area.

Development: The mixed-use development of Parkside is planned for this area. With over 1,000 units proposed, this development could have a major impact on enrollment.

The Residential Community Initiative Project (RCI) on Fort Meade will rebuild housing on the post and add additional, larger housing units. This project will be totally built out by 2010 and may yield over 700 new elementary students, 250 middle students and 80 senior students. This major initiative will impact the Meade Feeder System.

Enrollment: It is believed that the current capacity will handle the middle school growth projected from RCI and BRAC (See Appendix “Q”: BRAC).

Planning:⁶ The 1997 Anne Arundel County General Development Plan (GDP) for this area was updated via the implementation of the Jessup/Maryland City, Severn and Odenton Small Area Plans which went into effect on April 8, 2004, September 6, 2002 and November 6, 2003 respectively. The 2009 GDP was approved by the County Council on October 19, 2009.

**FACILITIES INVENTORY AND
ENROLLMENT PROJECTIONS BY GRADE**

*MACARTHUR MIDDLE (Grade 6-8)
3033 Rockenbach Road
Ft. George G. Meade*

State-Rated Capacity: 1,388

ACTUAL	PROJECTED											
	2010	2011	2012	2013	2014	2015	2016	2017	2018	2019	2020	
KDGN												
1												
2												
3												
4												
5												
6	405	460	447	463	473	473	456	465	483	482	484	
7	421	406	429	420	436	443	443	427	437	453	455	
8	368	421	419	419	421	435	443	443	427	437	439	
9												
10												
11												
12												
Total	1,194	1,287	1,295	1,302	1,330	1,351	1,342	1,335	1,347	1,372	1,378	
FTE	1,194	1,287	1,295	1,302	1,330	1,351	1,342	1,335	1,347	1,372	1,378	

Date of Occupancy: 1967

Evaluation of physical condition - Fair

Size of existing building: 211,620 sq.ft.

Acreage of site: 40.3 acres

Meade Middle School

Geographic/Demographic Component:¹ Meade Middle School is located within census tracts 7401.01, 7401.02, 7402.02, 7404, 7405, 7406 and 7506.

Zoning:² The attendance area encompasses the Fort George G. Meade Military Base and residential areas north, northeast, and west of the post. The lower portion of the base, below the Little Patuxent River, is zoned RLD. To the north and northeast of the post zoning is primarily R-1 with areas of R-2, R-5, and R-15, Ridgefield, Provinces and Pioneer City areas respectively. To the west zoning is of a higher density of R-5, R-10, and R-15 (Russett Center). Light to heavy industrial zoning exists along Rte 32. Several commercial zoning areas exist along Rte 198.

Sewer Service:³ Sewer service exists for all of Fort Meade, Maryland City, and the area south of Route 198. Sewer service in the Disney Road and Reece Road areas. The northern and western portions of the area are in the no planned service area. The remaining in-fill portions are in the planned service area.

Water Service:³ Water service exists for all of Fort Meade, Maryland City, and the area south of Route 198. The northern and western portions of the area are in the no planned service area. The remaining in-fill portions are in the planned service area.

Development: Several subdivisions are in varying stages of planning for this area. Combined, these subdivisions may have a significant impact on enrollment in the future.

Enrollment: Enrollment is projected to increase through 2020.

Planning:⁶ The 1997 Anne Arundel County General Development Plan (GDP) for this area was updated via the implementation of the Jessup/Maryland City, Severn and Odenton Small Area Plans which went into effect on April 8, 2004, September 6, 2002 and November 6, 2003 respectively. The 2009 GDP was approved by the County Council on October 19, 2009.

**FACILITIES INVENTORY AND
ENROLLMENT PROJECTIONS BY GRADE**

*MEADE MIDDLE (Grade 6-8)
1103 26th Street
Ft. George G. Meade*

State-Rated Capacity: 996

ACTUAL	PROJECTED										
	2010	2011	2012	2013	2014	2015	2016	2017	2018	2019	2020
KDGN											
1											
2											
3											
4											
5											
6	225	220	214	222	227	227	219	223	232	231	232
7	231	231	244	239	248	252	252	243	249	258	259
8	233	231	230	230	231	238	242	242	233	239	240
9											
10											
11											
12											
Total	689	682	688	691	706	717	713	708	714	728	731
FTE	689	682	688	691	706	717	713	708	714	728	731

Date of Occupancy: 1998
Evaluation of physical condition - Good

Size of existing building: 150,000 sq.ft.
Acreage of site: 35

Brock Bridge Elementary School

Geographic/Demographic Component:¹ Brock Bridge Elementary School is located within the census tract 7405.

Zoning:² The Brock Bridge attendance area is zoned open space in the western portion along the Patuxent River, except for the Russett PUD where higher density residential units are under construction. The remainder of land already in the Maryland City Development is zoned R-5. Land for potential residential development within the current boundaries is unavailable.

Sewer Service:³ Sewer service exists for all of the attendance area.

Water Service:³ Water service exists for all of the attendance area.

Development: Although the Meade Feeder System has been identified as a potential area of growth resulting from BRAC, few subdivisions have been planned for this area due to a lack of school capacity. Growth may continue as a result of the turnover of existing housing.

Enrollment: Enrollment should increase through 2020.

Planning:⁶ The 1997 Anne Arundel County General Development Plan (GDP) for this area was updated via the implementation of the Jessup/Maryland City, Severn and Odenton Small Area Plans which went into effect on April 8, 2004, September 6, 2002 and November 6, 2003 respectively. The 2009 GDP was approved by the County Council on October 19, 2009.

**FACILITIES INVENTORY AND
ENROLLMENT PROJECTIONS BY GRADE**

***BROCK BRIDGE ELEMENTARY (Grade K-5)
405 Brock Bridge Road
Laurel***

State-Rated Capacity: 537

	ACTUAL	PROJECTED									
	2010	2011	2012	2013	2014	2015	2016	2017	2018	2019	2020
KDGN	122	116	120	120	118	119	120	121	122	123	123
1	114	120	121	127	127	124	125	126	128	129	130
2	97	113	119	121	127	126	123	124	125	127	128
3	103	98	114	120	122	127	126	123	124	125	126
4	103	103	100	115	120	122	127	126	123	125	124
5	105	105	104	99	115	120	122	127	126	123	125
6											
7											
8											
9											
10											
11											
12											
Total	644	655	678	702	729	738	743	747	748	752	756
FTE	644	655	678	702	729	738	743	747	748	752	756

Date of Occupancy: 1970
 Addition/Renovation: 1972, 2003
 Evaluation of physical condition - Good
Feasibility Study FY17

Size of existing building: 73,113 sq.ft.
 Acreage of site: 55 acres
 Current Relocatables: 4

Frank Hebron-Harman Elementary School

Geographic/Demographic Component:¹ Frank Hebron-Harman Elementary School is located within census tracts 7401.01 and 7402.02.

Zoning:² The Frank Hebron-Harman attendance area is zoned primarily R-5 and R-2. Frank Hebron-Harman's zoning also consists of a non-contiguous area known as Meade Village Apartments, which is zoned R-15. The northernmost section is zoned R-5, with portions of light industrial development and commercial districts, i.e., Parkway Industrial Center.

Sewer Service:³ The Meade Village area and the area adjacent to the school has existing sewer service. The remaining areas adjacent to Route 713 and Clark Road are in the planned service area.

Water Service:³ The Meade Village area and the area adjacent to the school has existing water service. The outlying areas to the north and west are in the future service area.

Development: This area has experienced a very high rate of residential development in the past five years, primarily due to the availability of utilities. The Dorchester Planned Unit Development (PUD) is located in this area. Redistricting adopted by the Board of Education on April 24, 2007, placed the Arundel Preserve subdivision in this school boundary.

Enrollment: Enrollment has increased due to increased building of new homes in the Harman area. The build out of the Dorchester Planned Unit Development may continue to have significant impacts on enrollments for this area.

Planning:⁶ The 1997 Anne Arundel County General Development Plan (GDP) for this area was updated via the implementation of the Jessup/Maryland City, Severn and Odenton Small Area Plans which went into effect on April 8, 2004, September 6, 2002 and November 6, 2003 respectively. The 2009 GDP was approved by the County Council on October 19, 2009.

**FACILITIES INVENTORY AND
ENROLLMENT PROJECTIONS BY GRADE**

FRANK HEBRON-HARMAN ELEMENTARY SCHOOL (Grade PreK-5)
7660 Ridge Chapel Road
Hanover

State-Rated Capacity: 686

	ACTUAL	PROJECTED									
	2010	2011	2012	2013	2014	2015	2016	2017	2018	2019	2020
KDGN	104	101	105	105	103	104	105	106	107	108	108
1	128	107	106	111	111	109	110	111	112	113	114
2	105	129	106	106	111	110	108	109	110	111	112
3	82	108	130	107	107	111	110	108	109	110	110
4	106	85	111	131	107	107	111	110	108	109	110
5	107	110	86	110	132	107	107	111	110	108	109
6											
7											
8											
9											
10											
11											
12											
PreK	41	40	40	40	40	40	40	40	40	40	40
Total	673	680	684	710	711	688	691	695	696	699	703
FTE	653	660	664	690	691	668	671	675	676	679	683

Date of Occupancy: 2007
Original Building Occupied: 1955
Evaluation of physical condition - Excellent

Size of existing building: 79,875 sq.ft.
Acreage of site: 18.81 acres
Current Relocatables: 1

Jessup Elementary School

Geographic/Demographic Component:¹ Jessup Elementary School is located within census tracts 7401.01, 7401.02, and 7404.

Zoning:² Jessup attendance area is zoned predominately R-1. Provinces and Holiday Mobile Home are zoned R-5, and Richfield Drive within Pioneer City is zoned R-15.

Sewer Service:³ The Richfield Drive area has existing sewer service. The remaining areas adjacent to Route 295, Route 713 and Clark Road are in the planned service area.

Water Service:³ The Richfield Drive area has existing water service. The remaining areas adjacent to Route 295, Route 713 and Clark Road are in the planned service area.

Development: This area has experienced a moderate rate of residential development in the past five years. Two major subdivisions, Parkside (Blobs Park) and Arundel Preserve were redistricted to Meade Heights Elementary and Frank Hebron-Harman Elementary respectively by the Board of Education action on April 24, 2007.

Enrollment: Enrollment is projected to remain stable through 2020.

Planning:⁶ The 1997 Anne Arundel County General Development Plan (GDP) for this area was updated via the implementation of the Jessup/Maryland City, Severn and Odenton Small Area Plans which went into effect on April 8, 2004, September 6, 2002 and November 6, 2003 respectively. The 2009 GDP was approved by the County Council on October 19, 2009.

**FACILITIES INVENTORY AND
ENROLLMENT PROJECTIONS BY GRADE**

JESSUP ELEMENTARY (Grade PreK-5)
2900 Elementary School Lane
Jessup

State-Rated Capacity: 526

	ACTUAL	PROJECTED									
	2010	2011	2012	2013	2014	2015	2016	2017	2018	2019	2020
KDGN	65	62	64	64	63	64	65	65	65	66	66
1	69	63	65	68	68	66	67	68	69	69	69
2	64	68	62	65	68	68	66	67	68	69	68
3	74	65	69	63	66	68	68	66	67	68	69
4	69	75	67	70	63	66	68	68	66	67	68
5	55	70	76	67	70	63	66	68	68	66	67
6											
7											
8											
9											
10											
11											
12											
PreK	34	34	34	34	34	34	34	34	34	34	34
ECI	33	30	30	30	30	30	30	30	30	30	30
Total	463	467	467	461	462	459	464	466	467	469	471
FTE	430	435	435	429	430	427	432	434	435	437	439

Date of Occupancy: 1955
 Addition/Renovation: 1975, 1997
 Evaluation of physical condition - Fair
Feasibility Study FY14

Size of existing building: 83,868 sq.ft.
 Acreage of site: 31.13 acres
 Current Relocatables: 4

Manor View Elementary School

Geographic/Demographic Component:¹ Manor View Elementary School is located within census tract 7406.

Zoning:² Manor View Elementary School is located on the Fort George G. Meade Military Base. The central portion of the Manor View attendance area is located on post at Fort Meade. Base housing of MacArthur Manor attends Manor View.

Sewer Service:³ Sewer service exists for all of the attendance area.

Water Service:³ Water service exists for all of the attendance area.

Development: This The Residential Community Initiative Project (RCI) continues on Fort Meade and will rebuild housing on the post and add additional, larger housing units. This project will be totally built out by 2008 and may yield over 700 new elementary students, 250 middle students and 80 senior students. This major initiative will impact the Meade Feeder System.

Enrollment: Enrollment projections increase substantially due to the Residential Communities Initiative (RCI) Program and BRAC. (See Appendix “Q”). On April 6, 2011, the Board of Education adopted redistricting that created the West Meade Early Education Center. The WMEEC is a comprehensive center serving all ECI, prekindergarten, and kindergarten students who reside within the boundaries of Manor View Elementary School, Pershing Hill Elementary School, and the former West Meade Elementary School. Manor View Elementary School now serves grades 1-5. (See Appendix “R”).

Planning:⁶ The 1997 Anne Arundel County General Development Plan (GDP) for this area was updated via the implementation of the Jessup/Maryland City, Severn and Odenton Small Area Plans which went into effect on April 8, 2004, September 6, 2002 and November 6, 2003 respectively. The 2009 GDP was approved by the County Council on October 19, 2009.

**FACILITIES INVENTORY AND
ENROLLMENT PROJECTIONS BY GRADE**

**MANOR VIEW ELEMENTARY SCHOOL (Grade 1-5)
2900 MacArthur Road
Ft. George G. Meade**

State-Rated Capacity: 549

	ACTUAL	PROJECTED									
	2010	2011	2012	2013	2014	2015	2016	2017	2018	2019	2020
KDGN	139										
1	106	109	111	112	109	111	107	108	109	105	105
2	117	88	108	111	112	108	110	106	107	108	104
3	99	102	89	109	112	112	108	110	106	107	107
4	65	85	105	90	109	112	112	108	110	106	107
5	82	53	86	104	90	109	112	112	108	110	106
6											
7											
8											
9											
10											
11											
12											
Total	608	437	499	526	532	552	549	544	540	536	529
FTE	608	437	499	526	532	552	549	544	540	536	529

Date of Occupancy: 1971
 Evaluation of physical condition - Good
Feasibility Study FY14

Size of existing building: 72,267 sq.ft.
 Acreage of site: 17.58 Acres
 Current Relocatables: 4

Maryland City Elementary School

Geographic/Demographic Component:¹ Maryland City Elementary School is located within census tracts 7405 and 7401.02.

Zoning:² The Maryland City attendance area is zoned R-5, with a small portion of R-10 and R-15. The area south of Route 198 is receiving sewer and water services. The area north of Route 198 (Russett Center) zoning is consistent with the elements of a planned unit development consisting of commercial, residential (R-3, R-5, R-15, R-22) , and open space.

Sewer Service:³ Sewer service exists for most of the attendance area.

Water Service:³ Water service exists for most of the attendance area.

Development: This area has experienced a very low rate of residential development.

Enrollment: Redistricting adopted by the Board of Education on April 24, 2007, has increased enrollment at this school. Enrollment growth is also due to a turnover of existing housing. Significant growth is expected through 2020.

Planning:⁶ The 1997 Anne Arundel County General Development Plan (GDP) for this area was updated via the implementation of the Jessup/Maryland City, Severn and Odenton Small Area Plans which went into effect on April 8, 2004, September 6, 2002 and November 6, 2003 respectively. The 2009 GDP was approved by the County Council on October 19, 2009.

**FACILITIES INVENTORY AND
ENROLLMENT PROJECTIONS BY GRADE**

*MARYLAND CITY ELEMENTARY (Grade PreK-5)
3359 Crumpton South
Laurel*

State-Rated Capacity: 392

	ACTUAL	PROJECTED									
	2010	2011	2012	2013	2014	2015	2016	2017	2018	2019	2020
KDGN	75	72	75	75	74	75	76	77	77	78	78
1	60	74	75	79	79	78	79	80	81	82	82
2	68	58	73	75	79	79	78	78	80	81	81
3	65	69	58	74	76	79	79	78	78	80	81
4	46	66	71	58	74	76	79	79	78	78	80
5	48	47	67	70	58	74	76	79	79	78	78
6											
7											
8											
9											
10											
11											
12											
PreK	40	40	40	40	40	40	40	40	40	40	40
Total	402	426	459	471	480	501	507	511	513	517	520
FTE	382	406	439	451	460	481	487	491	493	497	500

Date of Occupancy: 1965
Evaluation of physical condition - Fair

Size of existing building: 49,130 sq.ft.
Acreage of site: 13.86 acres
Current Relocatables: 3

Meade Heights Elementary School

Geographic/Demographic Component:¹ Meade Heights Elementary is located within census tracts 7401.01, 7403.01, and 7406.

Zoning:² Meade Heights Elementary School is located on post at Fort George G. Meade. The Reece Heights area is zoned R-2. The southern portion of this attendance area is zoned R-5 and R-15 (Jackson Grove).

Sewer Service:³ Sewer service exists for all of the attendance area.

Water Service:³ Water service exists for all of the attendance area.

Development: The Planned Unit Development of Seven Oaks was redistricted out of this attendance area on April 24, 2007. The Residential Community Initiative Project (RCI) on Fort Meade continues rebuilding housing on the post and adding additional, larger housing units. Redistricting adopted by the Board of Education on April 24, 2007, moved the proposed mixed-use development of Parkside (Blobs Park) from Jessup Elementary to Meade Heights Elementary. That same redistricting moved Richfield Drive from Jessup Elementary to Meade Heights Elementary. The mixed-use development of Parkside, with over 1,000 units proposed, could have a major impact on enrollment.

Enrollment: The projected enrollment decreased substantially due the creation of boundaries for Seven Oaks Elementary. Though currently declining, enrollments will stabilize or begin to increase as the Parkside Development is built out.

Planning:⁶ The 1997 Anne Arundel County General Development Plan (GDP) for this area was updated via the implementation of the Jessup/Maryland City, Severn and Odenton Small Area Plans which went into effect on April 8, 2004, September 6, 2002 and November 6, 2003 respectively. The 2009 GDP was approved by the County Council on October 19, 2009.

**FACILITIES INVENTORY AND
ENROLLMENT PROJECTIONS BY GRADE**

***MEADE HEIGHTS ELEMENTARY (Grade PreK-5)
1925 Reece Road
Ft. George G. Meade***

State-Rated Capacity: 514

	ACTUAL	PROJECTED									
	2010	2011	2012	2013	2014	2015	2016	2017	2018	2019	2020
KDGN	29	33	34	34	33	33	33	33	33	33	33
1	57	28	35	36	36	35	35	35	35	35	35
2	38	55	28	35	36	36	35	35	35	35	35
3	47	38	55	28	35	36	36	35	35	35	35
4	50	48	39	55	28	35	36	36	35	35	35
5	40	51	48	39	55	28	35	36	36	35	35
6											
7											
8											
9											
10											
11											
12											
PreK	34	34	34	34	34	34	34	34	34	34	34
Total	295	287	273	261	257	237	244	244	243	242	242
FTE	278	270	256	244	240	220	227	227	226	225	225

Date of Occupancy: 1997
 Original Building Occupied: 1952
 Evaluation of physical condition - Good

Size of existing building: 74,000 sq.ft.
 Acreage of site: 16.33 acres

Pershing Hill Elementary School

Geographic/Demographic Component:¹ Pershing Hill Elementary is located within census tract 7406.

Zoning:² Pershing Hill Elementary School is located on post at Fort George G. Meade. It is served with water and sewer services from government installation. No subdivision activity is planned for this area.

Sewer Service:³ Sewer service exists for all of the attendance area.

Water Service:³ Water service exists for all of the attendance area.

Development: This area has not experienced residential development in the past five years. The Residential Community Initiative Project (RCI) on Fort Meade will rebuild housing on the post and add additional, larger housing units. This major initiative will impact the Meade Feeder System.

Enrollment: Enrollment is projected to increase. On April 6, 2011, the Board of Education adopted redistricting that created the West Meade Early Education Center. The WMEEC is a comprehensive center serving all ECI, prekindergarten, and kindergarten students who reside within the boundaries of Manor View Elementary School, Pershing Hill Elementary School, and the former West Meade Elementary School. Pershing Hill Elementary School now serves grades 1-5. (See Appendix “R”).

Planning:⁶ The 1997 Anne Arundel County General Development Plan (GDP) for this area was updated via the implementation of the Jessup/Maryland City, Severn and Odenton Small Area Plans which went into effect on April 8, 2004, September 6, 2002 and November 6, 2003 respectively. The 2009 GDP was approved by the County Council on October 19, 2009.

**FACILITIES INVENTORY AND
ENROLLMENT PROJECTIONS BY GRADE**

***PERSHING HILL ELEMENTARY (Grade 1-5)
7600 29th Division Road
Ft. George G. Meade***

State-Rated Capacity: 297

ACTUAL		PROJECTED									
2010		2011	2012	2013	2014	2015	2016	2017	2018	2019	2020
KDGN	29										
1	31	117	110	117	115	115	121	122	122	128	129
2	30	108	116	110	117	114	114	120	121	121	127
3	40	99	109	117	111	117	114	114	120	121	120
4	33	119	102	110	117	111	117	114	114	121	120
5	34	100	120	101	110	117	111	117	114	114	121
6											
7											
8											
9											
10											
11											
12											
Total	197	543	557	555	570	574	577	587	591	605	617
FTE	197	543	557	555	570	574	577	587	591	605	617

Date of Occupancy: 1960

Size of existing building: 39,200 sq.ft.

Evaluation of physical condition - Fair

Acreage of site: 8.32 acres

School Under Construction

Design capacity is 733. A final determination of capacity will be made in the fall of 2011.

Seven Oaks Elementary School

Geographic/Demographic Component:¹ Seven Oaks Elementary is located within census tract 7403.01.

Zoning:² The attendance area is zoned R-5, R-15, R-22 and O-NOD.

Sewer Service:³ Sewer service exists for all of the attendance area.

Water Service:³ Water service exists for all of the attendance area.

Development: The Planned Unit Development of Seven Oaks makes up virtually the entire attendance area. This community is near completion.

Enrollment: Boundaries were established April 24, 2007. Enrollment at Seven Oaks Elementary is projected to remain stable over the next ten years.

Planning:⁶ The 1997 Anne Arundel County General Development Plan (GDP) for this area was updated via the implementation of the Jessup/Maryland City, Severn and Odenton Small Area Plans which went into effect on April 8, 2004, September 6, 2002 and November 6, 2003 respectively. The 2009 GDP was approved by the County Council on October 19, 2009.

**FACILITIES INVENTORY AND
ENROLLMENT PROJECTIONS BY GRADE**

SEVEN OAKS ELEMENTARY (Grade PreK-5)
1905 Town Center Blvd.
Odenton

State-Rated Capacity: 633

	ACTUAL	PROJECTED									
	2010	2011	2012	2013	2014	2015	2016	2017	2018	2019	2020
KDGN	84	80	83	83	81	82	83	84	85	86	86
1	117	82	84	88	88	85	86	87	89	90	91
2	93	116	81	84	88	87	85	85	86	88	89
3	85	93	117	82	85	88	87	85	85	86	88
4	92	86	95	118	82	85	88	87	85	85	86
5	87	94	87	94	118	82	85	88	87	85	85
6											
7											
8											
9											
10											
11											
12											
PreK	35	35	35	35	35	35	35	35	35	35	35
ECI	16	33	33	33	33	33	33	33	33	33	33
Total	609	619	615	617	610	577	582	584	585	588	593
FTE	584	585	581	583	576	543	548	550	551	554	559

Date of Occupancy: 2007
 Building occupied 2005 by Meade Heights Elem
 Evaluation of physical condition - Excellent

Size of existing building: 81,209 sq.ft.
 Acreage of site: 20 acres

Van Bokkelen Elementary School

Geographic/Demographic Component:¹ Van Bokkelen Elementary School is located within census tract 7401.01.

Zoning:² Component area zoning is R-5 and R-15, consisting mainly of Pioneer Village, Warfield, and Still Meadows, all of which are townhouse and rental developments.

Sewer Service:³ Sewer service exists for Fort Meade and the area adjacent to the fort. The remaining areas are in the planned service area.

Water Service:³ Water service exists for Fort Meade and the area adjacent to the fort. The remaining areas are in the planned service area.

Development: This area has experienced a very low rate of residential development in the past five years.

Enrollment: Enrollment is projected to increase through 2020.

Planning:⁶ The 1997 Anne Arundel County General Development Plan (GDP) for this area was updated via the implementation of the Jessup/Maryland City, Severn and Odenton Small Area Plans which went into effect on April 8, 2004, September 6, 2002 and November 6, 2003 respectively. The 2009 GDP was approved by the County Council on October 19, 2009.

**FACILITIES INVENTORY AND
ENROLLMENT PROJECTIONS BY GRADE**

***VAN BOKKELEN ELEMENTARY (Grade PreK-5)
1140 Reece Road
Severn***

State-Rated Capacity: 644

	ACTUAL	PROJECTED									
	2010	2011	2012	2013	2014	2015	2016	2017	2018	2019	2020
KDGN	76	73	76	76	74	75	76	77	77	78	78
1	65	75	76	80	80	78	79	80	81	82	82
2	46	64	74	76	80	80	78	78	80	81	81
3	61	45	64	75	77	80	80	78	78	80	81
4	55	62	46	65	75	77	80	80	78	78	80
5	48	56	63	46	65	75	77	80	80	78	78
6											
7											
8											
9											
10											
11											
12											
PreK	41	41	41	41	41	41	41	41	41	41	41
Total	392	416	440	459	492	506	511	514	515	518	521
FTE	392	416	440	459	492	506	511	514	515	518	521

Date of Occupancy: 1973
 Addition/Renovation: 1996, 2002
 Evaluation of physical condition - Good

Size of existing building: 70,525 sq.ft.
 Acreage of site: 49.54 acres
 Current Relocatables: 1

"West Meade Early Education Center"

Geographic/Demographic Component:¹ “West Meade Early Education Center” is located within census tract 7406.

Zoning:² “West Meade Early Education Center” is located on post at Fort George G. Meade.

Sewer Service:³ Sewer service exists for Fort Meade and the area adjacent to the fort. The remaining areas are in the planned service area.

Water Service:³ Water service exists for Fort Meade and the area adjacent to the fort. The remaining areas are in the planned service area.

Development: This area has not experienced residential development in the past five years. The Residential Community Initiative Project (RCI) on Fort Meade will rebuild housing on the post and add additional, larger housing units. This major initiative will impact the Meade Feeder System.

Enrollment: Enrollment is expected to increase but remain below the state-rated capacity. On April 6, 2011, the Board of Education adopted redistricting that created the “West Meade Early Education Center”. The WMEEC is a comprehensive center serving all ECI, prekindergarten, and kindergarten students who reside within the boundaries of Manor View Elementary School, Pershing Hill Elementary School, and the former West Meade Elementary School. All current kindergarten through fourth grade students are redistricted to Pershing Hill Elementary School. (See Appendix “R”).

Planning:⁶ The 1997 Anne Arundel County General Development Plan (GDP) for this area was updated via the implementation of the Jessup/Maryland City, Severn and Odenton Small Area Plans which went into effect on April 8, 2004, September 6, 2002 and November 6, 2003 respectively. The 2009 GDP was approved by the County Council on October 19, 2009.

**FACILITIES INVENTORY AND
ENROLLMENT PROJECTIONS BY GRADE**

"WEST MEADE EARLY EDUCATION CENTER" (Grade PreK-K)

7722 Ray Street

Ft. George G. Meade

State-Rated Capacity: 177

	ACTUAL	PROJECTED									
	2010	2011	2012	2013	2014	2015	2016	2017	2018	2019	2020
KDGN	63	221	229	229	224	226	228	230	231	233	234
1	61										
2	53										
3	63										
4	52										
5	68										
6											
7											
8											
9											
10											
11											
12											
PreK	61	61	61	61	61	61	61	61	61	61	61
ECE	7	7	7	7	7	7	7	7	7	7	7
Total	428	289	297	297	292	294	296	298	299	301	302
FTE	394	255	263	263	258	260	262	264	265	267	268

Date of Occupancy: 1964

Evaluation of physical condition - Fair

Size of existing building: 38,093 sq.ft.

Acreage of site: 9.16 acres

Current Relocatables: 6

The state-rated capacity will be re-evaluated in the fall of 2011.