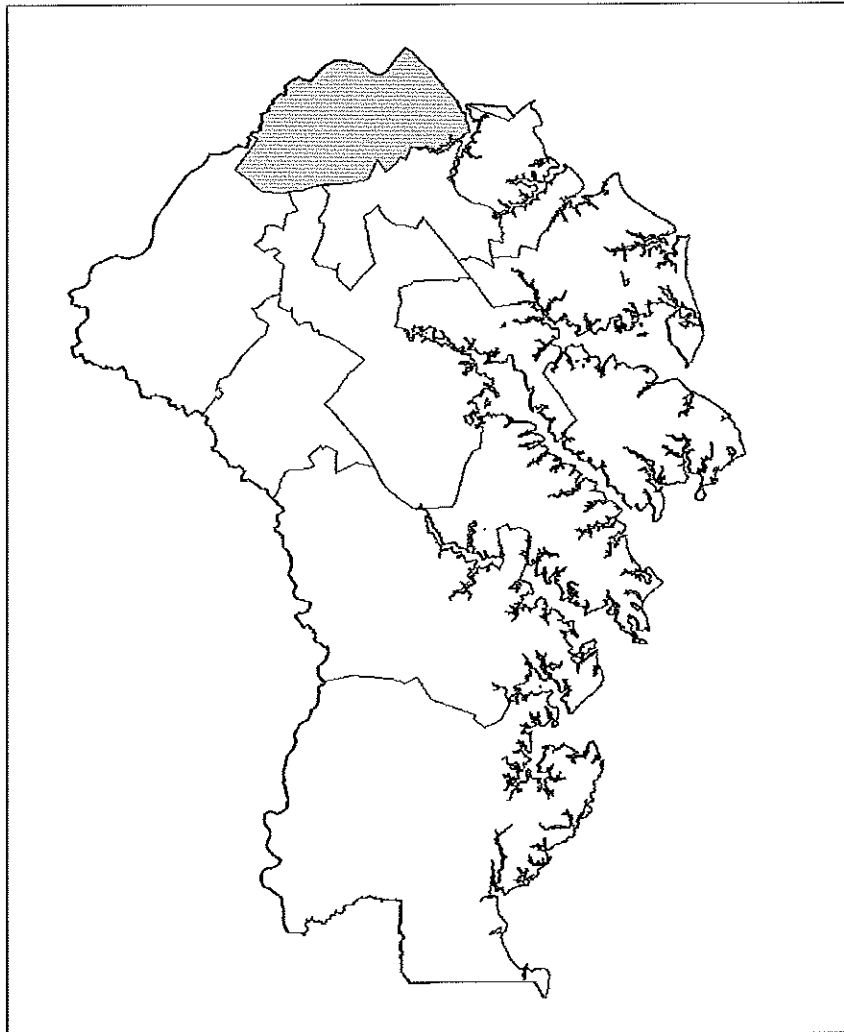
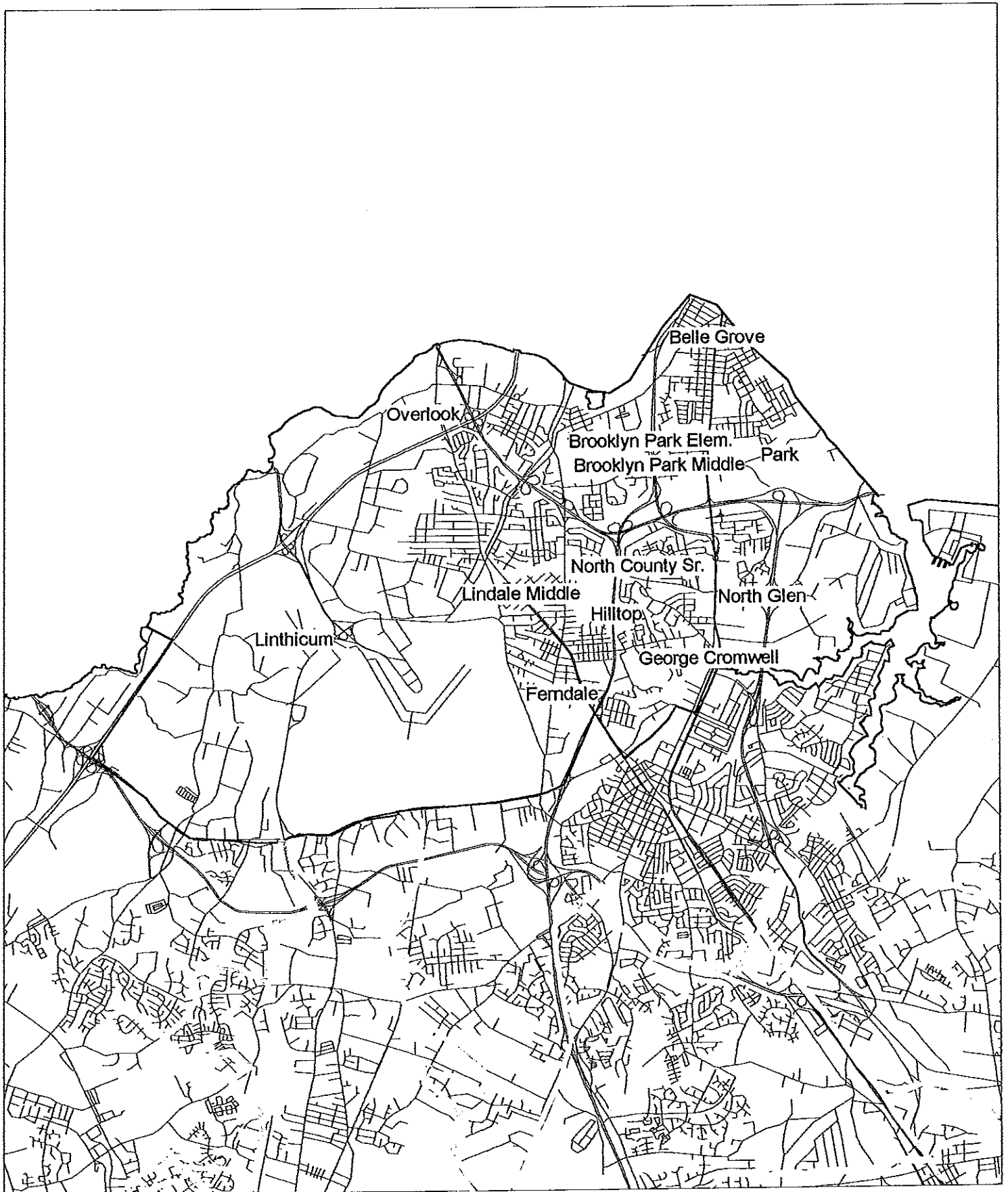


# North County Feeder System



NORTH COUNTY SENIOR HIGH SCHOOL (9-12)  
BROOKLYN PARK MIDDLE (6-8)  
BELLE GROVE ELEMENTARY (PREK-5)  
BROOKLYN PARK ELEMENTARY (PreK-5)  
PARK ELEMENTARY (PREK-5)

NORTH COUNTY SENIOR HIGH SCHOOL (9-12)  
LINDALE MIDDLE (6-8)  
FERNDALE EARLY CHILDHOOD CENTER (PREK-K)  
GEORGE CROMWELL ELEMENTARY (1-5)  
HILLTOP ELEMENTARY (K-5)  
LINTHICUM ELEMENTARY (K-5)  
NORTH GLEN ELEMENTARY (PREK-5)  
OVERLOOK ELEMENTARY (K-5)



# FACILITIES/ENROLLMENT COMPARISON NORTH COUNTY FEEDER SYSTEM

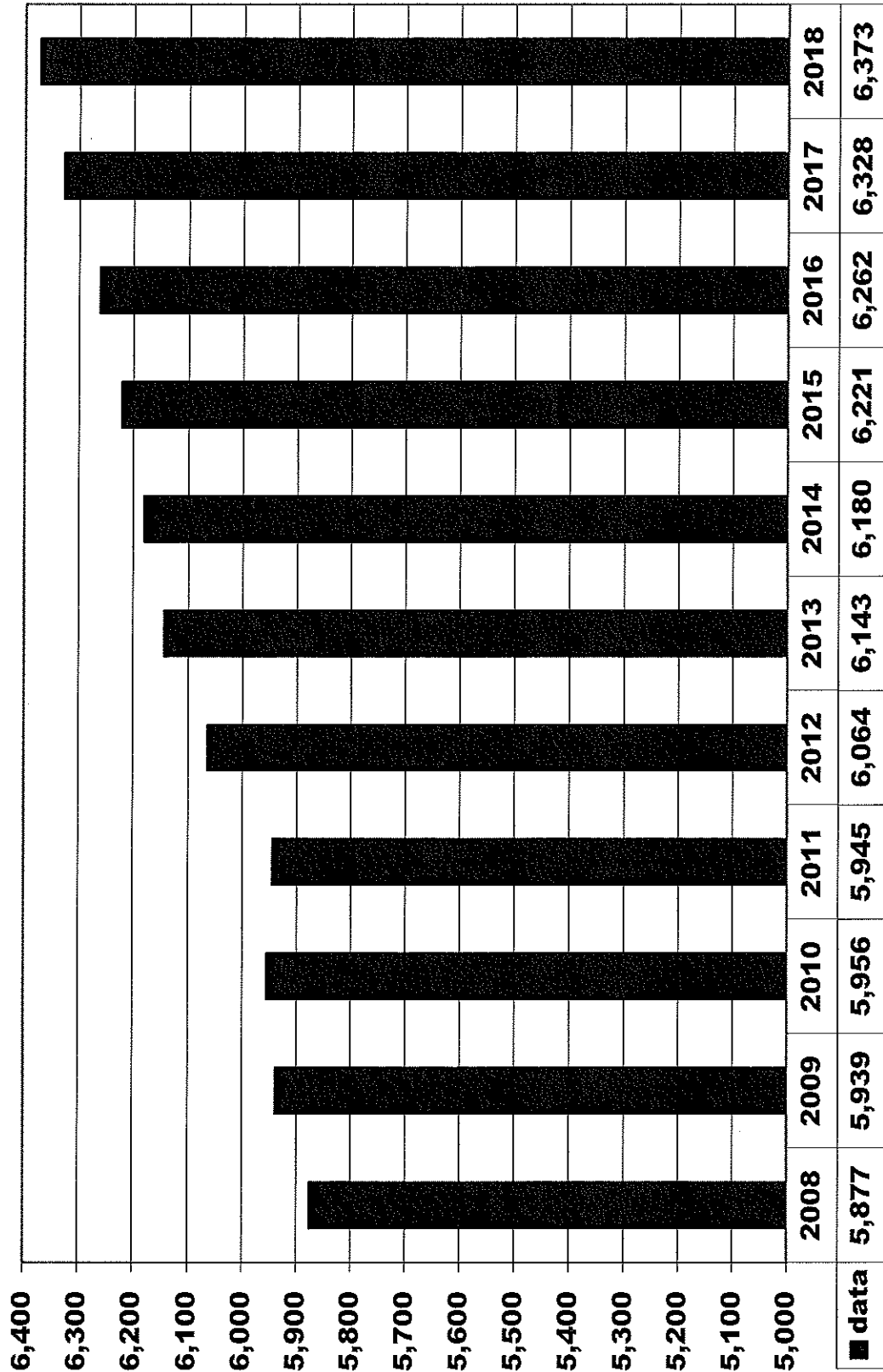
		PRESENT AND PROJECTED FTE ENROLLMENT												
Existing School	State Capacity	Grades Served	Actual	2008	2009	2010	2011	2012	2013	2014	2015	2016	2017	2018
North County Senior ▲	2,246	9-12	1,918	1,977	1,961	1,922	1,917	1,901	1,905	1,899	1,914	1,960	1,960	1,987
Brooklyn Park Middle ▲	880	6-8	474	426	424	428	428	435	442	454	454	450	450	453
Lindale Middle ▲	1,334	6-8	806	832	827	838	837	853	869	890	886	883	883	890
Belle Grove Elem 1 ▲	206	PreK-5	189	199	216	212	224	237	238	239	242	244	244	244
Brooklyn Park Elem ▲	411	PreK-5	353	367	361	352	361	364	366	369	374	378	378	378
Ferndale Early Childhood Center ▲	174	PreK-K	129	130	127	128	131	131	131	131	131	131	131	131
George Cromwell Elem 2▲	322	1-5	260	275	288	297	309	329	330	332	336	339	339	340
Hilltop Elem ▲	564	K-5	536	526	521	542	548	563	563	564	570	576	576	580
Linthicum Elem ▲	455	K-5	391	394	402	405	416	423	424	426	430	434	434	436
North Glen Elem ▲	271	PreK-5	236	239	244	240	243	249	250	251	254	256	256	256
Overlook Elem 3 ▲	294	K-5	215	205	217	227	238	255	256	257	259	262	262	263
Park Elem ▲	493	PreK-5	370	369	368	354	412	403	406	409	412	415	415	415
<b>TOTALS</b>	<b>7,650</b>		<b>5,877</b>	<b>5,939</b>	<b>5,956</b>	<b>5,945</b>	<b>6,064</b>	<b>6,143</b>	<b>6,180</b>	<b>6,221</b>	<b>6,262</b>	<b>6,328</b>	<b>6,328</b>	<b>6,373</b>
<b>ELEM TOTALS</b>	<b>3,190</b>		<b>2,679</b>	<b>2,704</b>	<b>2,744</b>	<b>2,757</b>	<b>2,882</b>	<b>2,954</b>	<b>2,964</b>	<b>2,978</b>	<b>3,008</b>	<b>3,035</b>	<b>3,035</b>	<b>3,043</b>

▲ = Denotes school is located in Priority Funding Area

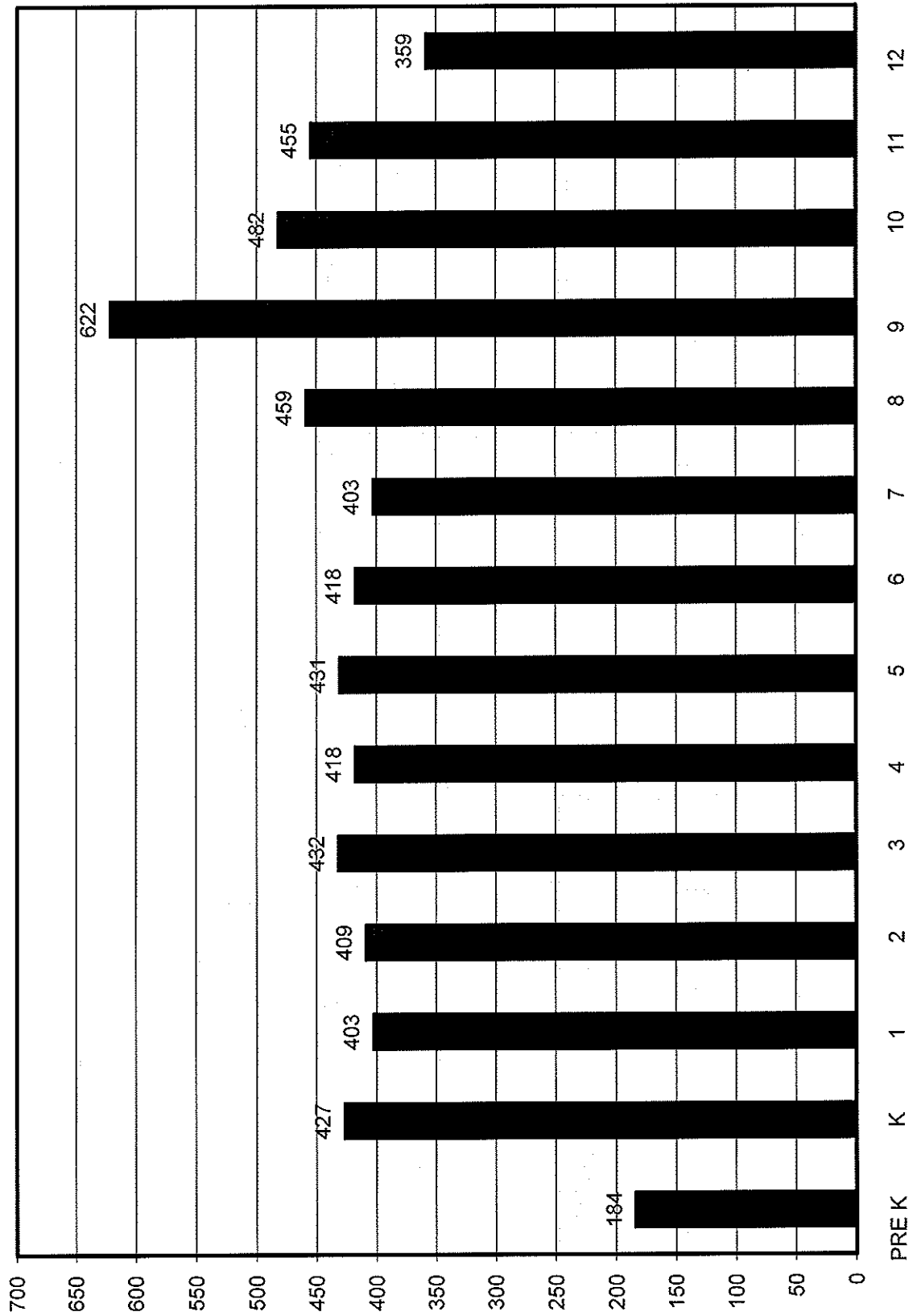
1. School Under Design.
2. Feasibility Study FY12.
3. Construction FY09/10.

# NORTH COUNTY FEEDER SYSTEM ENROLLMENT

## 2008 Actual, 2009-2018 Projected



# NORTH COUNTY FEEDER SYSTEM ACTUAL SEPTEMBER 2008 ENROLLMENT



# North County High School

**Geographic/Demographic Component:**<sup>1</sup> North County High School is located within census tracts 7504, 7503, 7505, 7506, 7507, 7508.01, 7501.01, 7501.02, 7502.01, 7502.02, 7502.03, and 7503.

**Zoning:**<sup>2</sup> Zoning in the North County attendance area is R-1 for the land designated for the Baltimore-Washington International Airport. Most of the western edge of this attendance area is zoned W1, Park industrial. The majority of the residential areas in North County are zoned R-5 with small pockets of R-15. Several areas along Ritchie Highway are zoned for commercial use. A large section along the Baltimore County line, which is zoned for open space, is known as the Patapsco Valley State Park.

**Sewer Service:**<sup>3</sup> Sewer service exists for most of this area. The Arundel Expressway area and the area adjacent to Nursery Road are in the planned service area. The areas north of the Baltimore Expressway and west of Nursery Road are in the no planned service area.

**Water Service:**<sup>3</sup> Water service exists for most of the area. The Nursery Road area is in the planned service area and the remaining western portion is in the future service area.

**Enrollment:** Enrollment for North County High may increase slightly over the next ten years due to the formation of a Science Technology Engineering Mathematics Program (STEM) in the fall of 2008. This influx of students may be offset in the future by the formation of other magnet programs throughout the county. The Maryland Department of Planning has identified this as an area of potential growth/turnover due to BRAC. (See Appendix “Q”).

**Planning:**<sup>6</sup> The 1997 Anne Arundel County General Development Plan (GDP) for this area was updated via the implementation of the Glen Burnie, BWI/Linthicum and Brooklyn Park Small Area Plans which went into effect on September 20, 2004, December 25, 2004 and October 28, 2004 respectively. A complete revised GDP is projected for completion in 2009.

## **Statistical Data:**<sup>1</sup>

Population of attendance area .....	33,227
Number in public schools (PreK-12) .....	6,052
Percent in public schools .....	18%
Percent non-white .....	25%
Average home value.....	\$180,000
Median income.....	\$55,414

**FACILITIES INVENTORY AND  
ENROLLMENT PROJECTIONS BY GRADE**

***NORTH COUNTY HIGH (Grade 9-12)  
10 E. 1st Avenue  
Glen Burnie***

*State-Rated Capacity: 2,246*

	ACTUAL	PROJECTED										
	2008	2009	2010	2011	2012	2013	2014	2015	2016	2017	2018	
KDGN												
1												
2												
3												
4												
5												
6												
7												
8												
9	622	627	612	603	613	605	629	612	637	660	661	
10	482	518	524	510	503	511	492	512	499	519	538	
11	455	428	431	434	423	417	426	410	427	416	432	
12	359	404	394	375	378	368	358	365	351	365	356	
<b>Total</b>	<b>1,918</b>	<b>1,977</b>	<b>1,961</b>	<b>1,922</b>	<b>1,917</b>	<b>1,901</b>	<b>1,905</b>	<b>1,899</b>	<b>1,914</b>	<b>1,960</b>	<b>1,987</b>	
<b>FTE</b>	<b>1,918</b>	<b>1,977</b>	<b>1,961</b>	<b>1,922</b>	<b>1,917</b>	<b>1,901</b>	<b>1,905</b>	<b>1,899</b>	<b>1,914</b>	<b>1,960</b>	<b>1,987</b>	

Date of Occupancy: 1971  
 Addition/Renovation: 1993, 2004  
 Gym Addition: 2007  
 Evaluation of physical condition - Good

Size of existing building: 331,764 sq.ft.  
 Acreage of site: 48.35 acres (Shares site with Hilltop Elem)

# Brooklyn Park Middle School

**Geographic/Demographic Component:**<sup>1</sup> Brooklyn Park Middle School is located within census tracts 7501.01, 7501.02, 7502.01, 7502.02 and 7502.03.

**Zoning:**<sup>2</sup> The Brooklyn Park Middle School attendance area is one of the most densely developed and urbanized areas of the county. Along with R-5 zoning, portions of R-15 create high-density pockets scattered throughout this attendance area. A concentration of commercial and retail zoning creates a central business district along Route 2. A buffer zone of open space along the banks of the Patapsco River forms the northern boundary of this attendance area with Baltimore County.

**Sewer Service:**<sup>3</sup> Sewer service exists for most of this area. The remaining areas are in the planned service area.

**Water Service:**<sup>3</sup> Water service exists for the entire area.

**Enrollment:** Enrollment will remain stable.

**Planning:**<sup>6</sup> The 1997 Anne Arundel County General Development Plan (GDP) for this area was updated via the implementation of the Glen Burnie, BWI/Linthicum and Brooklyn Park Small Area Plans which went into effect on September 20, 2004, December 25, 2004 and October 28, 2004 respectively. A complete revised GDP is projected for completion in 2009.

**FACILITIES INVENTORY AND  
ENROLLMENT PROJECTIONS BY GRADE**

***BROOKLYN PARK MIDDLE (Grade 6-8)  
200 Hammonds Lane  
Baltimore***

*State-Rated Capacity: 880*

	ACTUAL										
	2008	2009	2010	2011	2012	2013	2014	2015	2016	2017	2018
KDGN											
1											
2											
3											
4											
5											
6	154	123	120	124	121	126	131	131	126	129	134
7	148	156	158	156	161	158	164	170	170	163	167
8	172	147	146	148	146	151	147	153	158	158	152
9											
10											
11											
12											
<b>Total</b>	<b>474</b>	<b>426</b>	<b>424</b>	<b>428</b>	<b>428</b>	<b>435</b>	<b>442</b>	<b>454</b>	<b>454</b>	<b>450</b>	<b>453</b>
<b>FTE</b>	<b>474</b>	<b>426</b>	<b>424</b>	<b>428</b>	<b>428</b>	<b>435</b>	<b>442</b>	<b>454</b>	<b>454</b>	<b>450</b>	<b>453</b>

Date of original occupancy: 1954  
 Addition/Renovation: 1966, 2000  
 Evaluation of physical condition - Good

Size of existing building: 159,812 sq. ft.  
 (Total Complex: 248,809 sq. ft.)  
 Acreage of site: 44.159 acres

# Lindale Middle School

**Geographic/Demographic Component:**<sup>1</sup> Lindale Middle School is located within census tracts 7504, 7505, 7506, 7507, 7508.1, 7508.2, and 7512.

**Zoning:**<sup>2</sup> Zoning in the Lindale attendance area is R-1 for the land designated for the Baltimore-Washington International Airport. The northern and eastern portions of this attendance area are zoned predominately R-5 with small, scattered sections of high density R-15. Major commercial districts are located along Route 2. The western portion of this attendance area, located near the airport, is zoned for research and light industry. It is the focal point for this type of development (i.e. Westinghouse) in the northern portion of the county due to proximity to the airport.

**Sewer Service:**<sup>3</sup> Sewer service exists for most of this area. The Arundel Expressway area and the area adjacent to Nursery Road are in the planned service area. The areas north of the Baltimore Expressway and west of Nursery Road are in the no planned service area.

**Water Service:**<sup>3</sup> Water service exists for most of the area. The Nursery Road area is in the planned service area and the remaining western portion is in the future service area.

**Enrollment:** The enrollment increases slightly over the next ten years.

**Planning:**<sup>6</sup> The 1997 Anne Arundel County General Development Plan (GDP) for this area was updated via the implementation of the Glen Burnie, BWI/Linthicum and Brooklyn Park Small Area Plans which went into effect on September 20, 2004, December 25, 2004 and October 28, 2004 respectively. A complete revised GDP is projected for completion in 2009.

**FACILITIES INVENTORY AND  
ENROLLMENT PROJECTIONS BY GRADE**

*LINDALE MIDDLE (Grade 6-8)  
415 Andover Road  
Linthicum*

*State-Rated Capacity: 1,334*

	ACTUAL	PROJECTED										
	2008	2009	2010	2011	2012	2013	2014	2015	2016	2017	2018	
KDGN												
1												
2												
3												
4												
5												
6	264	311	303	313	306	319	331	332	319	326	338	
7	255	268	272	269	278	272	283	293	293	282	288	
8	287	253	252	256	253	262	255	265	274	275	264	
9												
10												
11												
12												
<b>Total</b>	<b>806</b>	<b>832</b>	<b>827</b>	<b>838</b>	<b>837</b>	<b>853</b>	<b>869</b>	<b>890</b>	<b>886</b>	<b>883</b>	<b>890</b>	
<b>FTE</b>	<b>806</b>	<b>832</b>	<b>827</b>	<b>838</b>	<b>837</b>	<b>853</b>	<b>869</b>	<b>890</b>	<b>886</b>	<b>883</b>	<b>890</b>	

Date of original occupancy: 1961  
 Addition: 1985  
 Renovation: 1996  
 Evaluation of physical condition - Good

Size of existing building: 191,583 sq. ft.  
 Acreage of site: 38.47 acres  
*Note: Occupancy of the renovated  
 Andover facility: January 1996*

# Belle Grove Elementary School

**Geographic/Demographic Component:**<sup>1</sup> Belle Grove Elementary School is located within census tract 7501.02.

**Zoning:**<sup>2</sup> Zoning in the Belle Grove attendance area is predominately R-15, with a small portion south of Belle Grove Road zoned R-5.

**Sewer Service:**<sup>3</sup> Sewer service exists for all of the attendance area.

**Water Service:**<sup>3</sup> Water service exists for all of the attendance area.

**Development:** This area has not experienced residential development in the past four years.

**Enrollment:** Enrollment increases slightly throughout the next ten years

**Planning:**<sup>6</sup> The 1997 Anne Arundel County General Development Plan (GDP) for this area was updated via the implementation of the Glen Burnie, BWI/Linthicum and Brooklyn Park Small Area Plans which went into effect on September 20, 2004, December 25, 2004 and October 28, 2004 respectively. A complete revised GDP is projected for completion in 2009.

**FACILITIES INVENTORY AND  
ENROLLMENT PROJECTIONS BY GRADE**

***BELLE GROVE ELEMENTARY (Grade PreK-5)  
4502 Belle Grove Road at 5th Avenue  
Baltimore***

*State-Rated Capacity: 206*

	ACTUAL	PROJECTED									
	2008	2009	2010	2011	2012	2013	2014	2015	2016	2017	2018
KDGN	34	35	33	33	35	35	35	35	35	35	35
1	25	36	37	35	36	38	38	38	38	38	38
2	25	26	37	37	35	36	38	38	38	38	38
3	38	25	25	37	37	35	36	38	38	38	38
4	20	38	26	25	37	37	35	36	38	38	38
5	28	20	39	26	25	37	37	35	36	38	38
6											
7											
8											
9											
10											
11											
12											
PreK	19	19	19	19	19	19	19	19	19	19	19
<b>Total</b>	<b>189</b>	<b>199</b>	<b>216</b>	<b>212</b>	<b>224</b>	<b>237</b>	<b>238</b>	<b>239</b>	<b>242</b>	<b>244</b>	<b>244</b>
FTE	189	199	216	212	224	237	238	239	242	244	244

Date of Occupancy: 1952  
 Addition/Renovation  
 Evaluation of physical condition - Fair  
***School Under Design***

Size of existing building: 31,850 sq.ft.  
 Acreage of site: 7.45 acres  
 Current Relocatables: 2

# Brooklyn Park Elementary School

**Geographic/Demographic Component:**<sup>1</sup> Brooklyn Park Elementary School is located within census tracts 7502.01 and 7502.02.

**Zoning:**<sup>2</sup> Brooklyn Park Elementary attendance area is zoned R-5 in the major portion of the area with clusters of R-15 located along Hammonds Lane and Route 648. The area also has various retail and commercial districts, located along Route 2. Light industrial zoning exists along Belle Grove Road.

**Sewer Service:**<sup>3</sup> Sewer service exists for most of this area. The remaining areas are in the planned service area.

**Water Service:**<sup>3</sup> Water service exists for the entire area.

**Development:** This area has experienced a low rate of residential development in the past four years.

**Enrollment:** Enrollment will increase slightly through 2018.

**Planning:**<sup>6</sup> The 1997 Anne Arundel County General Development Plan (GDP) for this area was updated via the implementation of the Glen Burnie, BWI/Linthicum and Brooklyn Park Small Area Plans which went into effect on September 20, 2004, December 25, 2004 and October 28, 2004 respectively. A complete revised GDP is projected for completion in 2009.

**FACILITIES INVENTORY AND  
ENROLLMENT PROJECTIONS BY GRADE**

***BROOKLYN PARK ELEMENTARY SCHOOL (Grade PreK-5)***  
*200 14th Avenue*  
*Baltimore*

*State-Rated Capacity: 411*

	ACTUAL	PROJECTED									
	2008	2009	2010	2011	2012	2013	2014	2015	2016	2017	2018
KDGN	54	55	53	53	56	56	56	56	56	56	56
1	57	57	58	56	57	61	61	61	61	61	61
2	52	59	58	58	56	57	61	61	61	61	61
3	65	51	58	58	58	56	57	61	61	61	61
4	65	64	52	58	59	58	56	57	61	61	61
5	43	64	65	52	58	59	58	56	57	61	61
6											
7											
8											
9											
10											
11											
12											
PreK	33	33	33	33	33	33	33	33	33	33	33
<b>Total</b>	<b>369</b>	<b>383</b>	<b>377</b>	<b>368</b>	<b>377</b>	<b>380</b>	<b>382</b>	<b>385</b>	<b>390</b>	<b>394</b>	<b>394</b>
FTE	353	367	361	352	361	364	366	369	374	378	378

Date of Occupancy: 1972

Addition/Renovation

Evaluation of physical condition - Fair

Size of existing building: 74,540 sq.ft.

Acreage of site: 12.227 acres

# Ferndale Early Childhood Center

**Geographic/Demographic Component:**<sup>1</sup> The Ferndale Early Childhood Center is located within census tract 7508.01. This attendance area lies adjacent to the Baltimore-Washington International Airport.

**Zoning:**<sup>2</sup> Zoning in the Ferndale area is predominately R-5, with commercial zoning along Route 648.

**Sewer Service:**<sup>3</sup> Sewer service exists for all of the attendance area.

**Water Service:**<sup>3</sup> Water service exists for all of the attendance area.

**Enrollment:** Redistricting adopted by the Board of Education on April 2, 2003, closed Ferndale Elementary as a K-5 school and redistricted the Ferndale students to George Cromwell Elementary. The same redistricting then opened the facility as an Early Childhood Center that opened in the fall of 2003 with Kindergarten and eligible Pre-K students from the George Cromwell Elementary attendance area. Enrollment is projected to remain stable through 2018.

**Planning:**<sup>6</sup> The 1997 Anne Arundel County General Development Plan (GDP) for this area was updated via the implementation of the Glen Burnie, BWI/Linthicum and Brooklyn Park Small Area Plans which went into effect on September 20, 2004, December 25, 2004 and October 28, 2004 respectively. A complete revised GDP is projected for completion in 2009.

**FACILITIES INVENTORY AND  
ENROLLMENT PROJECTIONS BY GRADE**

***FERNDALE EARLY CHILDHOOD CENTER (Grade PreK-K)  
105 Packard Avenue at Hollins Ferry Road  
Glen Burnie***

*State-Rated Capacity: 174*

	ACTUAL	PROJECTED									
	2008	2009	2010	2011	2012	2013	2014	2015	2016	2017	2018
KDGN	61	62	59	60	63	63	63	63	63	63	63
1											
2											
3											
4											
5											
6											
7											
8											
9											
10											
11											
12											
ECI	17	17	17	17	17	17	17	17	17	17	17
PreK	59	59	59	59	59	59	59	59	59	59	59
<b>Total</b>	<b>137</b>	<b>138</b>	<b>135</b>	<b>136</b>	<b>139</b>	<b>139</b>	<b>139</b>	<b>139</b>	<b>139</b>	<b>139</b>	<b>139</b>
FTE	129	130	127	128	131	131	131	131	131	131	131

Date of Occupancy: 1925  
 Addition/Renovation: 1962, 2003, 2007  
 Evaluation of physical condition -Excellent

Size of existing building: 24,076 sq.ft.  
 Acreage of site: 2.39 acres

# George Cromwell Elementary School

**Geographic/Demographic Component:**<sup>1</sup> George Cromwell Elementary School is located within census tract 7508.02.

**Zoning:**<sup>2</sup> Zoning in the George Cromwell attendance area is R-5.

**Sewer Service:**<sup>3</sup> Sewer service exists for all of the attendance area.

**Water Service:**<sup>3</sup> Water service exists for all of the attendance area.

**Enrollment:** Redistricting adopted by the Board of Education on April 2, 2003, closed Ferndale Elementary as a K-5 school and redistricted the Ferndale students to George Cromwell Elementary. The same redistricting then opened the facility as an Early Childhood Center that opened in the fall of 2003 with Kindergarten and eligible Pre-K students from the George Cromwell Elementary attendance area. Enrollment is projected to increase slightly through 2018.

**Planning:**<sup>6</sup> The 1997 Anne Arundel County General Development Plan (GDP) for this area was updated via the implementation of the Glen Burnie, BWI/Linthicum and Brooklyn Park Small Area Plans which went into effect on September 20, 2004, December 25, 2004 and October 28, 2004 respectively. A complete revised GDP is projected for completion in 2009.

**FACILITIES INVENTORY AND  
ENROLLMENT PROJECTIONS BY GRADE**

*GEORGE CROMWELL ELEMENTARY (Grade 1-5)  
525 Wellham Avenue  
Glen Burnie*

*State-Rated Capacity: 322*

	ACTUAL	PROJECTED										
	2008	2009	2010	2011	2012	2013	2014	2015	2016	2017	2018	
KDGN												
1	48	64	65	63	65	68	68	68	68	68	68	68
2	55	50	65	65	63	65	67	68	68	68	68	68
3	53	54	49	65	66	64	65	67	68	68	68	68
4	55	53	55	49	66	66	64	65	67	68	68	68
5	49	54	54	55	49	66	66	64	65	67	68	68
6												
7												
8												
9												
10												
11												
12												
<b>Total</b>	<b>260</b>	<b>275</b>	<b>288</b>	<b>297</b>	<b>309</b>	<b>329</b>	<b>330</b>	<b>332</b>	<b>336</b>	<b>339</b>	<b>340</b>	<b>340</b>
<b>FTE</b>	<b>260</b>	<b>275</b>	<b>288</b>	<b>297</b>	<b>309</b>	<b>329</b>	<b>330</b>	<b>332</b>	<b>336</b>	<b>339</b>	<b>340</b>	<b>340</b>

Date of Occupancy: 1964  
Addition/Renovation  
Evaluation of physical condition - Fair  
*Feasibility Study FY12*

Size of existing building: 42,110 sq.ft.  
Acreage of site: 16.5446 Acres

# Hilltop Elementary School

**Geographic/Demographic Component:**<sup>1</sup> Hilltop Elementary School is located within census tracts 7504, 7508.01, and 7508.02.

**Zoning:**<sup>2</sup> Zoning in the Hilltop attendance area is R-5 in the major portion and R-15 in the portion between the Baltimore Beltway 695 and Route 2. Housing types range from single family to townhouse clusters and garden apartments.

**Sewer Service:**<sup>3</sup> Sewer service exists for all of the attendance area.

**Water Service:**<sup>3</sup> Water service exists for all of the attendance area.

**Development:** This area has experienced a low rate of residential development in the past four years.

**Enrollment:** Enrollment increases slightly through 2018. Pre-kindergarten students from this area are transported to the Ferndale Early Childhood Center.

**Planning:**<sup>6</sup> The 1997 Anne Arundel County General Development Plan (GDP) for this area was updated via the implementation of the Glen Burnie, BWI/Linthicum and Brooklyn Park Small Area Plans which went into effect on September 20, 2004, December 25, 2004 and October 28, 2004 respectively. A complete revised GDP is projected for completion in 2009.

**FACILITIES INVENTORY AND  
ENROLLMENT PROJECTIONS BY GRADE**

*HILLTOP ELEMENTARY (Grade K-5)  
415 Melrose Avenue  
Glen Burnie*

*State-Rated Capacity: 564*

	ACTUAL	PROJECTED									
	2008	2009	2010	2011	2012	2013	2014	2015	2016	2017	2018
KDGN	88	89	85	86	90	90	90	90	90	91	92
1	82	92	93	90	93	97	97	97	97	98	99
2	91	85	94	94	90	93	96	97	97	97	98
3	73	90	83	95	95	91	93	96	97	97	97
4	99	72	92	84	96	96	91	93	96	97	97
5	103	98	74	93	84	96	96	91	93	96	97
6											
7											
8											
9											
10											
11											
12											
<b>Total</b>	<b>536</b>	<b>526</b>	<b>521</b>	<b>542</b>	<b>548</b>	<b>563</b>	<b>563</b>	<b>564</b>	<b>570</b>	<b>576</b>	<b>580</b>
<b>FTE</b>	<b>536</b>	<b>526</b>	<b>521</b>	<b>542</b>	<b>548</b>	<b>563</b>	<b>563</b>	<b>564</b>	<b>570</b>	<b>576</b>	<b>580</b>

Date of Occupancy: 1970  
 Addition/Renovation: 1996  
 Kindergarten Addition: 2000  
 Evaluation of physical condition - Good

Size of existing building: 74,290 sq.ft.  
 Acreage of site: 20 (Shares site with  
 North County Senior)  
 Current Relocatables: 4

# Linthicum Elementary School

**Geographic/Demographic Component:**<sup>1</sup> Linthicum Elementary School is located within census tracts 7504, 7508.01, and 7508.02.

**Zoning:**<sup>2</sup> Zoning in the Linthicum attendance area is predominately R-5 in the eastern and central sections. There is a great deal of WI and R-1 zoning in the western portion of census tract 7505.

**Sewer Service:**<sup>3</sup> Sewer service exists for most of this area. The Arundel Expressway area and the area adjacent to Nursery Road are in the planned service area. The areas north of the Baltimore Expressway and west of Nursery Road are in the no planned service area.

**Water Service:**<sup>3</sup> Water service exists for all of the attendance area.

**Enrollment:** Enrollment increases slightly through 2018.

**Planning:**<sup>6</sup> The 1997 Anne Arundel County General Development Plan (GDP) for this area was updated via the implementation of the Glen Burnie, BWI/Linthicum and Brooklyn Park Small Area Plans which went into effect on September 20, 2004, December 25, 2004 and October 28, 2004 respectively. A complete revised GDP is projected for completion in 2009.

**FACILITIES INVENTORY AND  
ENROLLMENT PROJECTIONS BY GRADE**

*LINTHICUM ELEMENTARY (Grade K-5)  
101 School Lane at Camp Meade Road  
Linthicum Heights*

*State-Rated Capacity: 455*

	ACTUAL	PROJECTED									
	2008	2009	2010	2011	2012	2013	2014	2015	2016	2017	2018
KDGN	66	67	64	65	68	68	68	68	68	68	69
1	67	69	70	68	70	74	73	73	73	74	74
2	63	69	70	70	68	70	73	73	73	73	74
3	67	62	67	70	71	69	70	73	73	73	73
4	62	66	64	68	71	71	69	70	73	73	73
5	66	61	67	64	68	71	71	69	70	73	73
6											
7											
8											
9											
10											
11											
12											
<b>Total</b>	<b>391</b>	<b>394</b>	<b>402</b>	<b>405</b>	<b>416</b>	<b>423</b>	<b>424</b>	<b>426</b>	<b>430</b>	<b>434</b>	<b>436</b>
<b>FTE</b>	<b>391</b>	<b>394</b>	<b>402</b>	<b>405</b>	<b>416</b>	<b>423</b>	<b>424</b>	<b>426</b>	<b>430</b>	<b>434</b>	<b>436</b>

Date of Occupancy: 1971  
Addition/Renovation: 1973 (Boiler addition 2004)

Size of existing building: 71,682 sq.ft.  
Acreage of site: 8.04 acres

Evaluation of physical condition - Good

Current Relocatables: 1

# North Glen Elementary School

**Geographic/Demographic Component:**<sup>1</sup> North Glen Elementary School is located within the census tracts 7502.03, 7508.02, and 7512.

**Zoning:**<sup>2</sup> Zoning in the North Glen attendance area is R-5 in the eastern portion, which forms the heart of the attendance area. There is an area of R-15, providing garden apartment communities along Furnace Branch Road at Crain Highway. The central portion is zoned for commercial development, lying along both sides of Route 2. Several large commercial establishments form a buffer to the higher density zoning of R-15, located at the corner of Ordnance Road and Route 10 (Arundel Expressway). To the north, the community of Morris Hills is zoned R-15, and provides the only single family development situated east of Route 2. There is a zoned tract WI located southeast of the Arundel Expressway.

**Sewer Service:**<sup>3</sup> Sewer service exists for all of the attendance area.

**Water Service:**<sup>3</sup> Water service exists for all of the attendance area.

**Enrollment:** Enrollment is projected to increase slightly but remain below the state-rated capacity through 2018.

**Planning:**<sup>6</sup> The 1997 Anne Arundel County General Development Plan (GDP) for this area was updated via the implementation of the Glen Burnie, BWI/Linthicum and Brooklyn Park Small Area Plans which went into effect on September 20, 2004, December 25, 2004 and October 28, 2004 respectively. A complete revised GDP is projected for completion in 2009.

**FACILITIES INVENTORY AND  
ENROLLMENT PROJECTIONS BY GRADE**

***NORTH GLEN ELEMENTARY (Grade PreK-5)  
615 Furnace Branch Road  
Glen Burnie***

*State-Rated Capacity: 271*

	ACTUAL	PROJECTED									
	2008	2009	2010	2011	2012	2013	2014	2015	2016	2017	2018
KDGN	36	37	35	35	37	37	37	37	37	37	37
1	34	38	39	37	38	40	40	40	40	40	40
2	36	35	39	39	37	38	40	40	40	40	40
3	40	36	34	39	39	37	38	40	40	40	40
4	34	40	37	34	39	39	37	38	40	40	40
5	37	34	41	37	34	39	39	37	38	40	40
6											
7											
8											
9											
10											
11											
12											
PreK	37	37	37	37	37	37	37	37	37	37	37
<b>Total</b>	<b>254</b>	<b>257</b>	<b>262</b>	<b>258</b>	<b>261</b>	<b>267</b>	<b>268</b>	<b>269</b>	<b>272</b>	<b>274</b>	<b>274</b>
FTE	236	239	244	240	243	249	250	251	254	256	256

Date of Occupancy: 1959  
Addition/Renovation

Size of existing building: 43,565 sq.ft.  
Acreage of site: 15 acres

Evaluation of physical condition - Good

Current Relocatables: 1

# Overlook Elementary School

**Geographic/Demographic Component:**<sup>1</sup> Overlook Elementary School is located within census tracts 7503, 7504, and 7505.

**Zoning:**<sup>2</sup> Zoning in the Overlook attendance area is open space in the northern portion along the banks of the Patapsco River. The western portion has R-1 zoning and is sparsely populated. The central portion, i.e., the heart of the attendance area, is zoned R-5. The eastern section is zoned for light industry.

**Sewer Service:**<sup>3</sup> Sewer service exists for the central and eastern portions of the area. The northern portion is in the planned service area and the western portion is in the no planned service.

**Water Service:**<sup>3</sup> Water service exists for the central and eastern portions of the area. The northern portion is in the planned service area and the western portion is in the no planned service.

**Enrollment:** Enrollment will increase through 2018.

**Planning:**<sup>6</sup> The 1997 Anne Arundel County General Development Plan (GDP) for this area was updated via the implementation of the Glen Burnie, BWI/Linthicum and Brooklyn Park Small Area Plans which went into effect on September 20, 2004, December 25, 2004 and October 28, 2004 respectively. A complete revised GDP is projected for completion in 2009.

**FACILITIES INVENTORY AND  
ENROLLMENT PROJECTIONS BY GRADE**

*OVERLOOK ELEMENTARY (Grade K-5)  
401 Hampton Road  
N. Linthicum*

*State-Rated Capacity: 294*

	ACTUAL	PROJECTED									
	2008	2009	2010	2011	2012	2013	2014	2015	2016	2017	2018
KDGN	40	41	39	39	41	41	41	41	41	41	41
1	27	42	43	42	42	44	44	44	44	45	45
2	32	28	43	43	42	42	44	44	44	44	45
3	31	32	27	43	43	42	42	44	44	44	44
4	31	31	33	27	43	43	42	42	44	44	44
5	54	31	32	33	27	43	43	42	42	44	44
6											
7											
8											
9											
10											
11											
12											
<b>Total</b>	<b>215</b>	<b>205</b>	<b>217</b>	<b>227</b>	<b>238</b>	<b>255</b>	<b>256</b>	<b>257</b>	<b>259</b>	<b>262</b>	<b>263</b>
<b>FTE</b>	<b>215</b>	<b>205</b>	<b>217</b>	<b>227</b>	<b>238</b>	<b>255</b>	<b>256</b>	<b>257</b>	<b>259</b>	<b>262</b>	<b>263</b>

Date of Occupancy: 1955  
 Addition/Renovation: 1958  
 Evaluation of physical condition - Fair  
***School Under Construction***

Size of existing building: 41,154 sq.ft.  
 Acreage of site: 11.6 acres  
 Current Relocatables: 1

# Park Elementary School

**Geographic/Demographic Component:**<sup>1</sup> Park Elementary School is located within census tracts 7501.01 and 7502.03.

**Zoning:**<sup>2</sup> Zoning in the Park attendance area is predominately R-5. A small portion is zoned R-15. In addition, the area has a mixture of retail and commercial districts. An area adjacent to the school is zoned open space and has been designated for park and recreation use.

**Sewer Service:**<sup>3</sup> Sewer service exists for all of the attendance area.

**Water Service:**<sup>3</sup> Water service exists for all of the attendance area.

**Development:** The Cedar Hill Planned Unit Development (PUD) has received partial approval. With over 1,000 units planned, this PUD could have a significant impact on enrollment.

**Enrollment:** Enrollments may increase substantially with the build-out of the Cedar Hill PUD.

**Planning:**<sup>6</sup> The 1997 Anne Arundel County General Development Plan (GDP) for this area was updated via the implementation of the Glen Burnie, BWI/Linthicum and Brooklyn Park Small Area Plans which went into effect on September 20, 2004, December 25, 2004 and October 28, 2004 respectively. A complete revised GDP is projected for completion in 2009.

**FACILITIES INVENTORY AND  
ENROLLMENT PROJECTIONS BY GRADE**

*PARK ELEMENTARY (Grade PreK-5)  
201 East 11th Avenue  
Baltimore*

*State-Rated Capacity: 493*

	ACTUAL	PROJECTED									
	2008	2009	2010	2011	2012	2013	2014	2015	2016	2017	2018
KDGN	48	49	47	47	59	59	59	59	59	59	59
1	63	50	51	50	61	64	64	64	64	64	64
2	55	65	51	51	60	61	64	64	64	64	64
3	65	54	63	51	61	61	61	64	64	64	64
4	52	64	55	64	61	61	61	61	64	64	64
5	51	51	65	55	74	61	61	61	61	64	64
6											
7											
8											
9											
10											
11											
12											
PreK	36	36	36	36	36	36	36	36	36	36	36
<b>Total</b>	<b>370</b>	<b>369</b>	<b>368</b>	<b>354</b>	<b>412</b>	<b>403</b>	<b>406</b>	<b>409</b>	<b>412</b>	<b>415</b>	<b>415</b>
FTE	370	369	368	354	412	403	406	409	412	415	415

Date of Occupancy: 1996  
Original Building Occupied: 1943

Size of existing building: 68,779 sq.ft.  
Acreage of site: 6 acres

Evaluation of physical condition - Good

Current Relocatables: 1

