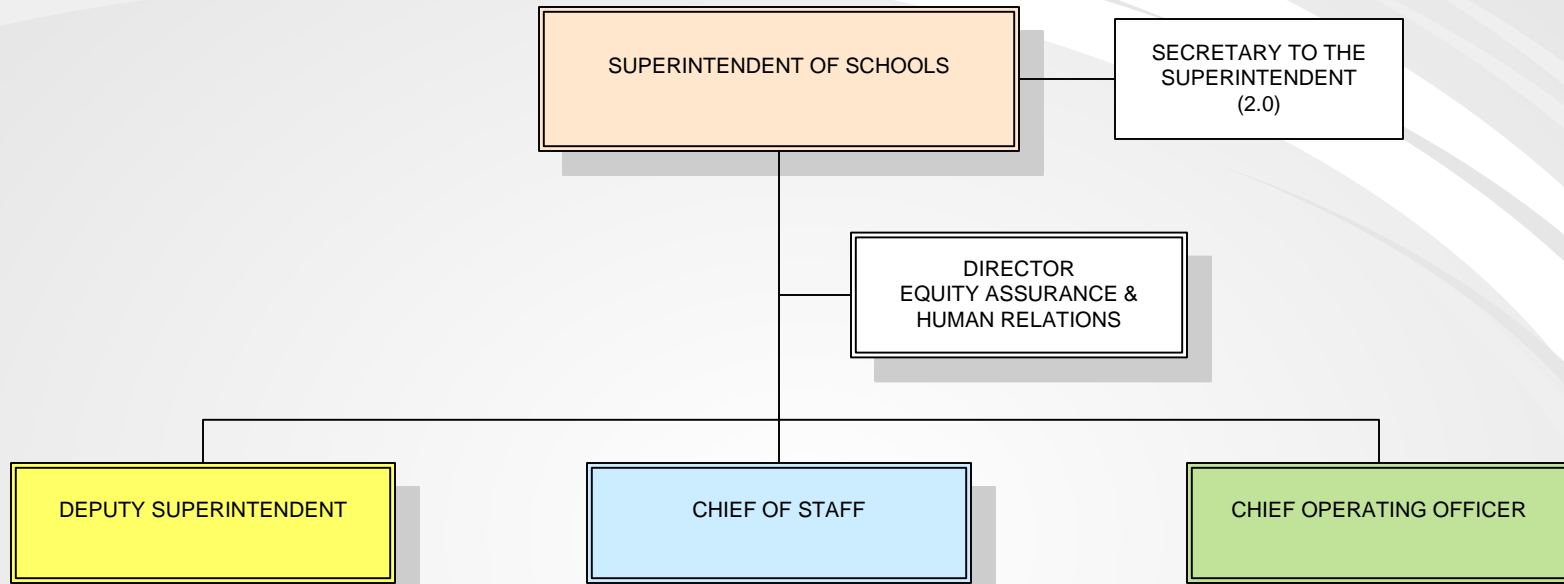


SUPERINTENDENT OF SCHOOLS



Summary Superintendent

Combined Funds	Actual Expenditures FY2008	Revised Budget FY2009	Superintendent's Recommended FY2010	Board Request FY2010	Change + / (-) FY2010
Positions:					
Professional Positions	4.00	4.00	4.00	4.00	0.00
Support Positions	4.00	3.00	3.00	3.00	0.00
Total Positions:	<u>8.00</u>	<u>7.00</u>	<u>7.00</u>	<u>7.00</u>	<u>0.00</u>
Budget by Object:					
Salaries and Wages	\$ 766,185	\$ 907,792	\$ 924,436	\$ 867,236	\$ (40,556)
Contracted Services	37,958	25,700	25,700	25,700	-
Supplies & Materials	9,598	3,335	3,335	3,335	-
Other Costs	57,420	60,364	69,264	69,264	8,900
Equipment	3,471	1,615	1,615	1,615	-
Total by Object:	<u>\$ 874,632</u>	<u>\$ 998,806</u>	<u>\$ 1,024,350</u>	<u>\$ 967,150</u>	<u>\$ (31,656)</u>
Area/Department:					
Superintendent of Schools	\$ 486,110	\$ 491,639	\$ 505,495	\$ 448,295	\$ (43,344)
Equity Assurance & Human Relations	388,522	507,167	518,855	518,855	11,688
Total by Area/Department:	<u>\$ 874,632</u>	<u>\$ 998,806</u>	<u>\$ 1,024,350</u>	<u>\$ 967,150</u>	<u>\$ (31,656)</u>

Superintendent of Schools

Budget Accountability – Kevin M. Maxwell, Ph.D., Superintendent of Schools

Description

The Office of the Superintendent of Schools provides leadership in developing and maintaining academically rigorous educational programs and services to meet the needs of each of the approximately 74,000 students in the Anne Arundel County Public Schools. While directly responsible to the Board of Education of Anne Arundel County, the Superintendent guides and directs the administrative, instructional, and support functions of the school system and provides leadership in setting and achieving district goals focused on accelerating student achievement. Through the establishment of measurable district goals, the office oversees the use of all facilities, property, and funds, keeping the best interests of students and the school system at the forefront.

Objectives

- To accelerate achievement for all students and minimize the achievement disparities among all groups of students.
- To create a safe learning environment that promotes accelerated achievement.
- To establish community partnerships to promote accelerated achievement in a welcoming school environment.

Superintendent of Schools

Combined Funds	Actual Expenditures FY2008	Revised Budget FY2009	Superintendent's Recommended FY2010	Board Request FY2010	Change (+ / -) FY2010
<i>Positions:</i>					
Superintendent	1.00	1.00	1.00	1.00	-
Total Professional Positions	1.00	1.00	1.00	1.00	-
Secretary to Superintendent	2.00	2.00	2.00	2.00	-
Secretary or Clerk	1.00	-	-	-	-
Total Support Positions	3.00	2.00	2.00	2.00	-
Total Positions	4.00	3.00	3.00	3.00	-
<i>Expenditures:</i>					
<u>Salaries and Wages</u>					
Total Professional Salaries	\$ 255,499	\$ 253,154	\$ 253,154	\$ 253,154	\$ -
Total Support Salaries	\$ 164,685	\$ 192,085	\$ 196,441	\$ 139,241	\$ (52,844)
Secretary or Clerk (Temporary)	\$ 5,563	\$ -	\$ -	\$ -	\$ -
Total Other Salaries and Wages	\$ 5,563	\$ -	\$ -	\$ -	\$ -
Total Salaries and Wages	\$ 425,747	\$ 445,239	\$ 449,595	\$ 392,395	\$ (52,844)
<u>Contracted Services</u>					
Repairs to Equipment	\$ 480	\$ 500	\$ 500	\$ 500	\$ -
Total Contracted Services	\$ 480	\$ 500	\$ 500	\$ 500	\$ -
<u>Supplies & Materials</u>					
Books & Periodicals	\$ -	\$ 300	\$ 300	\$ 300	\$ -
Office Supplies	5,962	2,575	2,575	2,575	-
Total Supplies and Materials	\$ 5,962	\$ 2,875	\$ 2,875	\$ 2,875	\$ -
<u>Other Costs</u>					
Professional Development	\$ 31,800	\$ 36,190	\$ 36,190	\$ 36,190	\$ -
Subscriptions/Dues	10,514	6,000	6,000	6,000	-
Mileage - Unit VI	9,405	-	9,500	9,500	9,500
Total Other Costs	\$ 51,719	\$ 42,190	\$ 51,690	\$ 51,690	\$ 9,500
<u>Equipment</u>					
Equipment-New	\$ 2,202	\$ 835	\$ 835	\$ 835	\$ -
Total Equipment	\$ 2,202	\$ 835	\$ 835	\$ 835	\$ -
Total for: Superintendent of Schools	\$ 486,110	\$ 491,639	\$ 505,495	\$ 448,295	\$ (43,344)

Equity Assurance and Human Relations

Budget Accountability – Carlesa Finney, Director

Description

The mission of the Office of Equity Assurance and Human Relations (OEAHR) is to facilitate Anne Arundel County Public Schools and the Anne Arundel County community to meet the goals of the 2004 Office of Civil Rights (OCR) Memorandum of Agreement, and assist schools and communities to build their capacity and resources to develop programs and initiatives that prepare public school children for school and accelerate academic achievement and social skill development for school success.

Objectives

- Provide direction, information, training and resources and support to facilitate meeting the OCR goals, monitor the progress and report the status and results to all stakeholders.
- Develop and assist a cadre of community stakeholders committed to develop student support initiatives designed to accelerate academic achievement and social skill development for school success.
- Facilitate increasing school-based programs that help prepare children for school and school success.
- Provide on-going professional development to staff on cultural proficiency and related topics.
- Provide support and instruction to teachers to change or augment curriculum and instructional delivery techniques that are culturally responsive.
- Act as a clearing house for research and effective school and community practices impacting the goals of the OCR agreement.

Equity Assurance & Human Relations

Combined Funds	Actual Expenditures FY2008	Revised Budget FY2009	Superintendent's Recommended FY2010	Board Request FY2010	Change (+ / -) FY2010
<i>Positions:</i>					
Director	1.00	1.00	1.00	1.00	-
Specialist	2.00	2.00	2.00	2.00	-
Total Professional Positions	3.00	3.00	3.00	3.00	-
Secretary or Clerk	1.00	1.00	1.00	1.00	-
Total Support Positions	1.00	1.00	1.00	1.00	-
Total Positions	4.00	4.00	4.00	4.00	-
<i>Expenditures:</i>					
<u>Salaries and Wages</u>					
Total Professional Salaries	\$ 241,676	\$ 308,518	\$ 320,247	\$ 320,247	\$ 11,729
Total Support Salaries	\$ 51,473	\$ 56,388	\$ 56,947	\$ 56,947	\$ 559
Teacher Stipends-School Year	\$ 21,813	\$ 22,647	\$ 22,647	\$ 22,647	\$ -
Aide Non-Instructional Temporary	25,476	75,000	75,000	75,000	-
Total Other Salaries and Wages	\$ 47,289	\$ 97,647	\$ 97,647	\$ 97,647	\$ -
Total Salaries and Wages	\$ 340,438	\$ 462,553	\$ 474,841	\$ 474,841	\$ 12,288
<u>Contracted Services</u>					
Consulting Fees - Educational	\$ 37,478	\$ 25,200	\$ 25,200	\$ 25,200	\$ -
Total Contracted Services	\$ 37,478	\$ 25,200	\$ 25,200	\$ 25,200	\$ -
<u>Supplies & Materials</u>					
Office Supplies	\$ 3,636	\$ 460	\$ 460	\$ 460	\$ -
Total Supplies and Materials	\$ 3,636	\$ 460	\$ 460	\$ 460	\$ -
<u>Other Costs</u>					
Professional Development	\$ 3,988	\$ 15,100	\$ 15,100	\$ 15,100	\$ -
Mileage - Unit V	1,153	1,800	1,800	1,800	-
Mileage - Unit VI	560	1,274	674	674	(600)
Total Other Costs	\$ 5,701	\$ 18,174	\$ 17,574	\$ 17,574	\$ (600)
<u>Equipment</u>					
Equipment-New	\$ 1,269	\$ 780	\$ 780	\$ 780	\$ -
Total Equipment	\$ 1,269	\$ 780	\$ 780	\$ 780	\$ -
Total for: Equity Assurance & Human Relations	\$ 388,522	\$ 507,167	\$ 518,855	\$ 518,855	\$ 11,688

