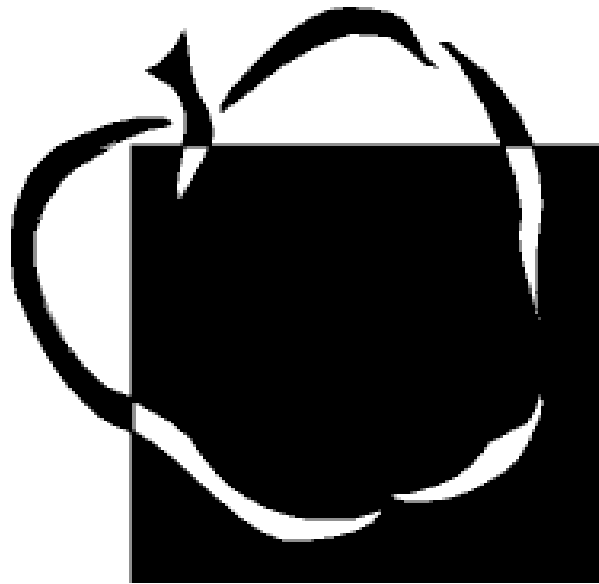


Comprehensive Maintenance Plan



FISCAL YEAR 2007

Maintenance Division

COMPREHENSIVE MAINTENANCE PLAN

TABLE OF CONTENTS

Subject	Page
I. PURPOSE.....	2
II. ORGANIZATIONAL CHARTS.....	2
III. OBJECTIVES OF MAINTENANCE	2
IV. MAINTENANCE FUNDING RESOURCES	6
V. WORK MANAGEMENT.....	7
VI. PREVENTIVE MAINTENANCE SYSTEM.....	7
VII. BOILERS	7
VIII. ENVIRONMENTAL ISSUES	8
IX. ENERGY MANAGEMENT SYSTEM	8
X. SCHOOL INVENTORY AND RENOVATIONS.....	9
XI. SUMMARY OF MAINTENANCE BACKLOG	12
XII. FIVE-YEAR MAINTENANCE AND REPAIR PLAN	13

Anne Arundel County Public Schools Comprehensive Maintenance Plan FY2007

I. PURPOSE:

The Anne Arundel County Public Schools' Comprehensive Maintenance Plan (CMP) is designed to:

- A. Ensure continuation of a multi-year maintenance program so the business of education can be conducted in schools that are safe, healthy, and functionally efficient.
- B. Provide a means of measuring actual progress against planned accomplishments. By tracking these trends, deficiencies may be maintained at a manageable level or used to reflect an unmanageable area of concern that must be addressed in future budget processes.
- C. Efficiently use all operations and/or maintenance resources, gaining the most return on the taxpayers' investment.

II. ORGANIZATIONAL CHARTS:

As shown on pages 3 thru 5

III. OBJECTIVES OF MAINTENANCE:

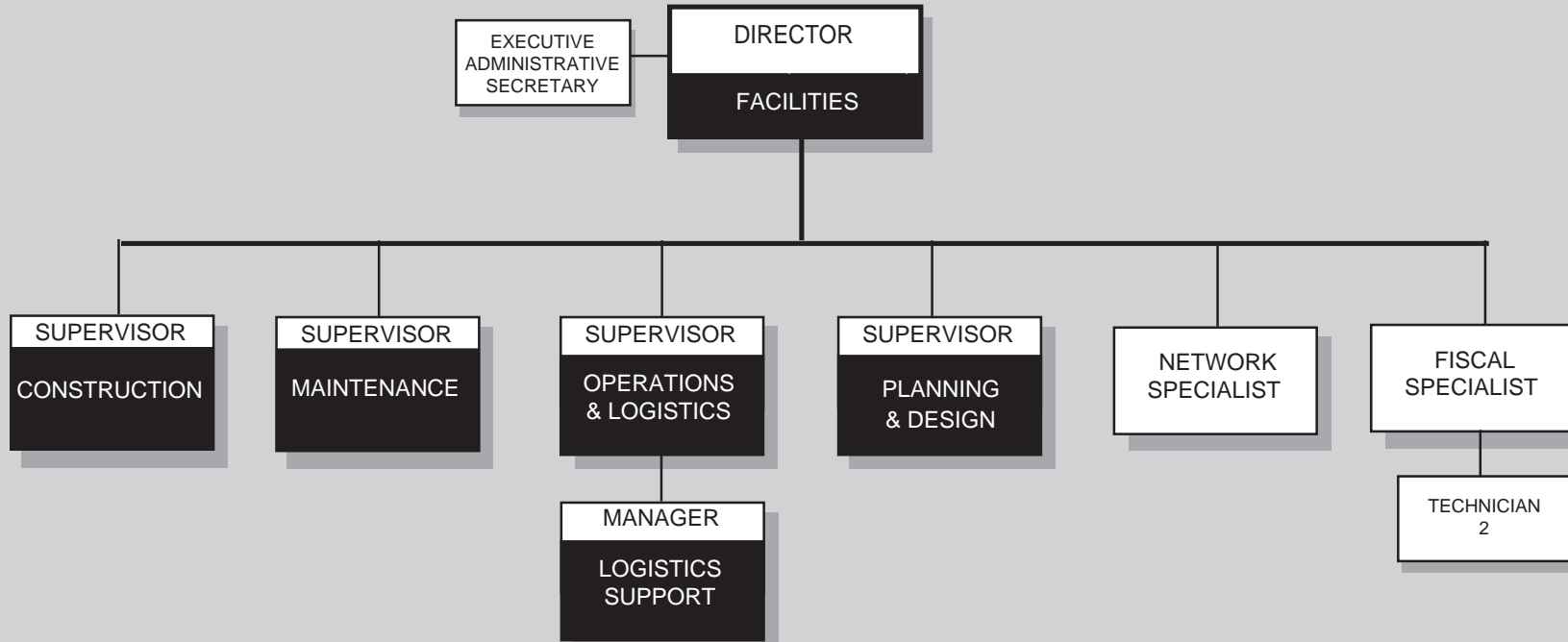
The primary objective of an effective maintenance program is the retention, in as near original condition as possible, of school buildings, grounds, and fixed equipment assets by means of proper operation, cleaning, repairing, and component replacement throughout the life-cycle of their use.

Other objectives are to:

- A. Provide minor alterations to facilitate the continued functionality of buildings as their educational needs and uses change over time.
- B. Ensure that facilities are operated in an effective, safe, and economical manner.
- C. Provide a maintenance scheme for buildings, grounds, and fixed equipment, which eliminates or reduces to a minimum level, the risk of fires, accidents, and safety hazards; thereby, protecting their occupants as well as the public's capital investment.
- D. Support the educational goal of the Superintendent and the Board of Education.

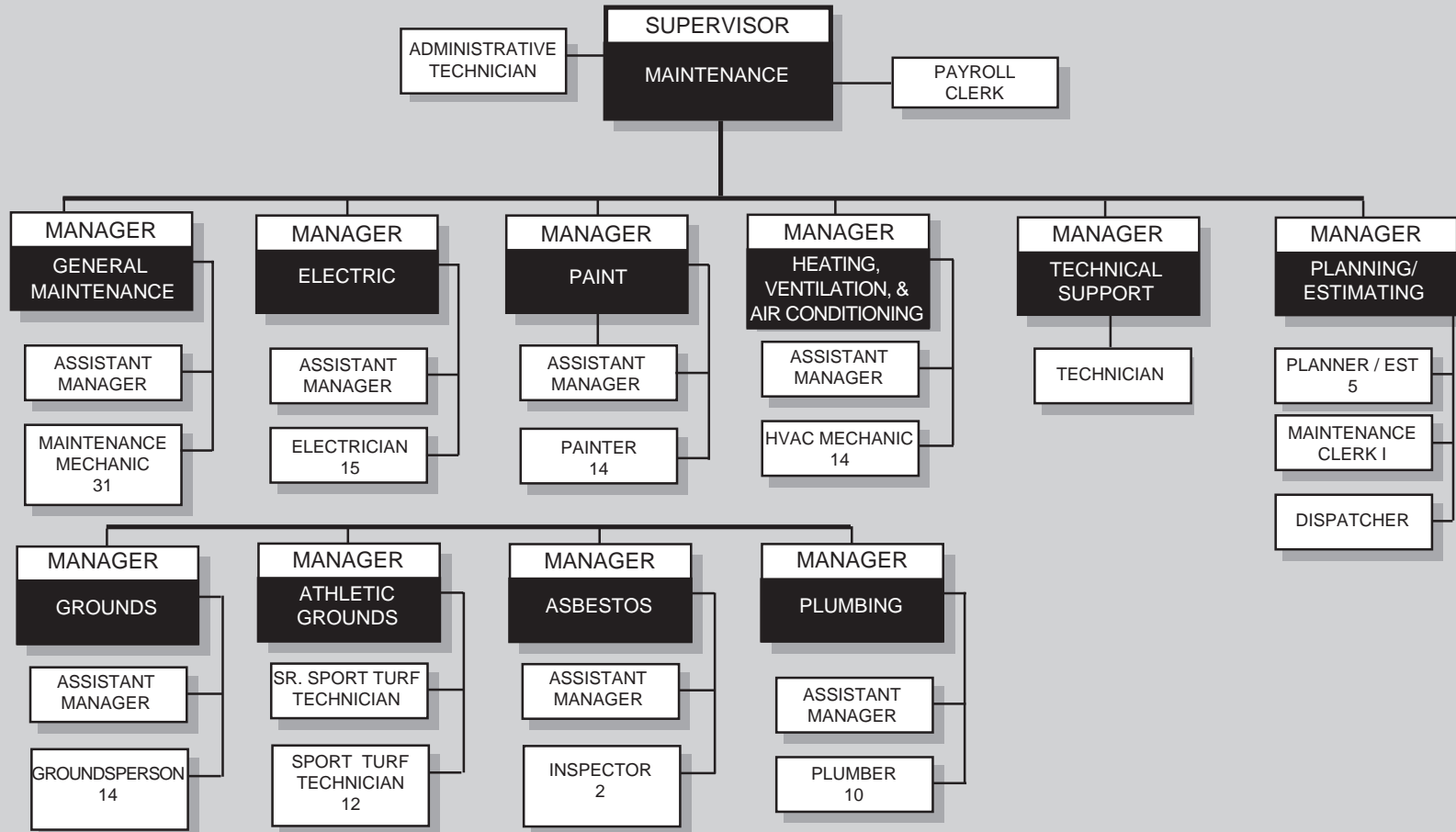
ANNE ARUNDEL COUNTY PUBLIC SCHOOLS
Business & Management Services

DIVISION OF
FACILITIES



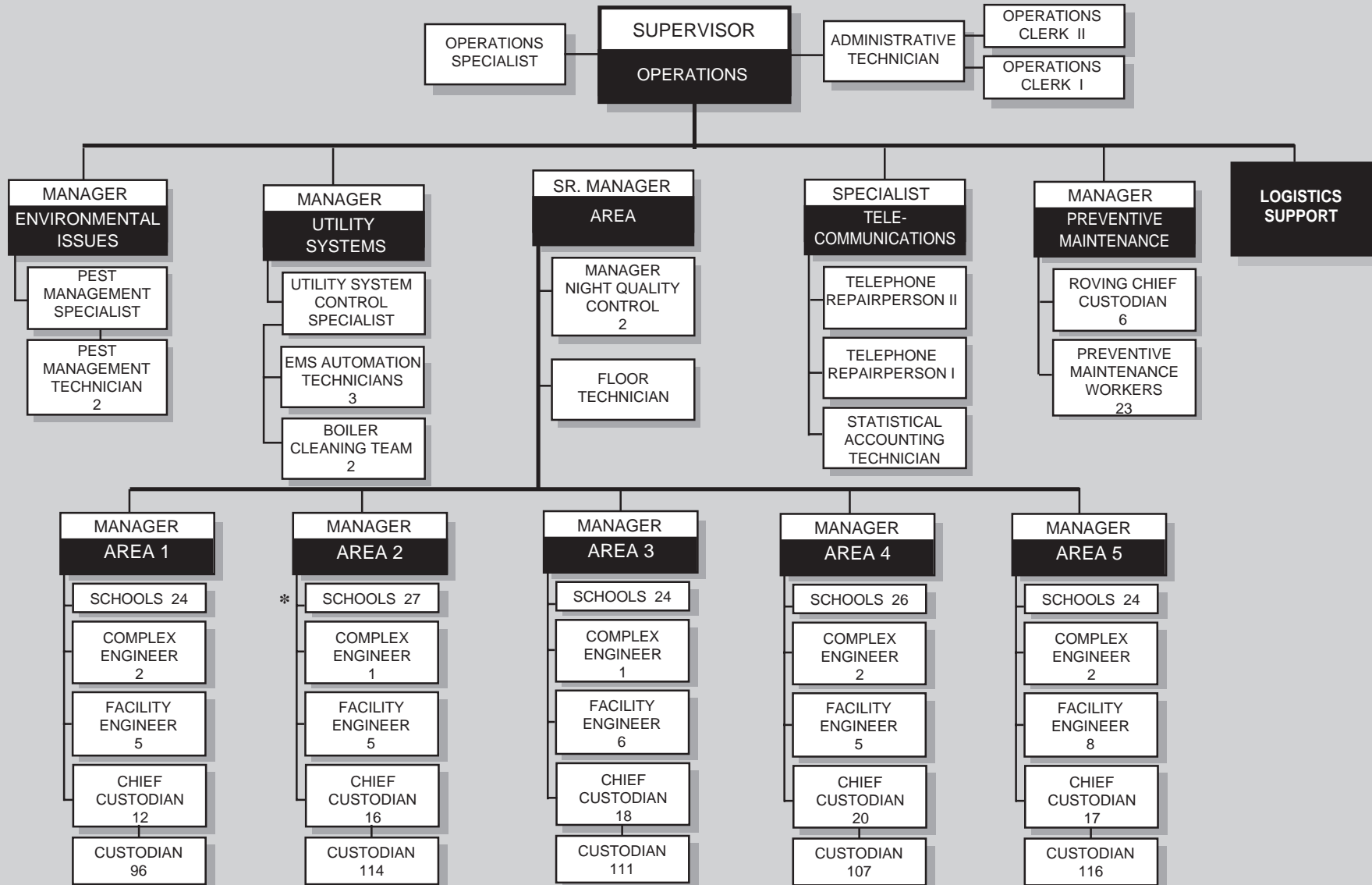
ANNE ARUNDEL COUNTY PUBLIC SCHOOLS
Facilities

OFFICE OF
MAINTENANCE



ANNE ARUNDEL COUNTY PUBLIC SCHOOLS
Facilities

OFFICE OF
OPERATIONS & LOGISTICS



III. OBJECTIVES OF MAINTENANCE (continued):

- E. Provide continuous use of facilities without disruption to the educational program by applying the principles of Preventive Maintenance (PM), thus reducing the possibility of breakdown repairs.
- F. Maintain the interior and exterior school appearance to reinforce the learning process and student pride, as well as, make our schools good neighbors within the local communities.
- G. Manage all maintenance efforts so that the maximum amount of work is accomplished within the resources provided.

IV. MAINTENANCE FUNDING RESOURCES:

This plan reflects a recent surge in funding at the local level to address the growing backlog of repairs. At the request of the BOE, the line item for the backlog reduction was increased from \$3 million in FY06 to \$13 million in the FY07 Capital Budget request. The county supported this request and included it in the program for this year. These funds, when coupled with \$10 million for IAC systemic projects, will be used to address a myriad of needs throughout the school system. While it is a start in addressing the overall backlog, it will be essential that these funding levels be sustained in the out years to realistically check the backlog growth. Furthermore, with the increase in major renovations and replacements of existing schools, the backlog will be impacted by the reduction of the requirements for repair projects since the work will be addressed in the renovation/replacement project. However, if we are to sustain the overall condition of our schools on a daily basis, attention should be directed to bolster the in house effort with additional maintenance and custodial staff and contract funds to address essential recurring tasks for the proper maintenance of the school plant equipment. Summarized below is the funding for FY07 to address the maintenance of the school plant and reduction of the overall maintenance backlog.

Category	Funding Source	Funds Available
Health & Safety	Local/Capital funds	500,000
Recurring maintenance requirements	Operating Funds	1,400,000
¹ Backlog reduction initiative	Local Capital Funds	13,000,000
Roof Replacement	Local Capital Funds	2,000,000
Facility systems/components replacements	State/County funded systemic projects	10,000,000
Replace Asbestos ceiling/floor tile	Local Capital funds	1,000,000
Aging Schools	State funds	1,300,000
QZAB	Federal/State	600,000

1 The backlog reduction initiative provides local capital resources to address maintenance projects that normally will not qualify for State funding. These funds are used on such projects as public address systems, fire alarm replacements, carpet/tile replacement, driveway/sidewalk replacement, HVAC and boiler work in non-instructional buildings. The work in these and other categories are listed in the appendix with project list for each school.

V. WORK MANAGEMENT:

The Maintenance Division's automated maintenance management system continues to provide qualitative and quantitative real-time data to enable managers to make informed decisions. Since 1989, over 220,000 work orders have been completed and are archived in a file, which can be accessed by Maintenance and Operations Managers to analyze and evaluate past performance. This information continues to provide managers the tools needed to implement work productivity enhancements in their departments thereby improving the quality of the product that is delivered to the school(s).

Work management enhancements include, but are not limited to:

Geographically assigned mechanics

Functionally align mechanics' duties

Analyze estimated vs. actual performance

Provide immediate information to the schools on the status of their work request

Provide a proactive system for immediate feedback to schools

Publish comparative data between maintenance departments on work performance

Provide department managers with work order accomplishments for employees in each department

VI. PREVENTIVE MAINTENANCE SYSTEM:

The Operation Division's management personnel are geographically grouped into six areas, each with an area manager who oversees school custodial activities during the day. Two night Quality Control Managers rove throughout the county during the evening. The preventive maintenance (PM) system is augmented by eight 3-person teams, which inspect and service equipment on a scheduled basis. Typical PM activities include:

Lubricate bearings on fan shafts, pumps, etc.

Lubricate motors

Change/clean filters

Clean coils

Visually check coils for leaks

Check for bad motors

Check for loss of power

Clean and inspect units

Replace belts

Inspect and clean fan blades and housing

Check and adjust sheaves

Check linkage to dampers

Check bearings for shaft endplay and wear

Remove bad exhaust fan motors

Replace exhaust fan bearings

Check for air and steam leaks

Snow removal during the winter months

The preventive maintenance department uses an automated system that allows for work to be distributed to each team and individual on a scheduled basis. The system uses palm pilots that let the PM team fill in their work as it is being done. It is then downloaded into the computer where it is archived for future use by managers.

VII. BOILERS:

Anne Arundel County Public Schools continues to work on an aggressive boiler safety and operations program. Boiler safety is a critical element for all school facility and complex engineers and HVAC/Plumbing mechanics. The Operations Division has an ongoing training program that focuses on proper maintenance procedures. The Operations Division annually cleans and inspects all operating boilers internally.

VII. BOILERS (continued):

The public schools' boiler certification insurance is with Hartford Steam Boiler Inspection and Insurance Company. The Utility Systems Program Manager for the school system monitors this contract.

VIII. ENVIRONMENTAL ISSUES:

Compliance with environmental requirements is accomplished through the Environmental Program Manager in the Operations Division. This position, with support by the Maintenance Division and funds provided in the Capital program, provides the oversight for environmental issues.

The Maintenance Division ensures asbestos (ASHERA) compliance. The Environmental Issues Program Manager is a Certified Industrial Hygienist and provides the essential experience and expertise that is necessary for an effective program. Duties may include the following:

- Air Quality Management
- Solid Waste Management & Recycling
- Water Quality
- Occupational Regulation
- Indoor Air Quality Investigations
- Herbicide and pesticide use implementation program

IX. ENERGY MANAGEMENT SYSTEM:

The Energy Management System remotely manages 85% of our schools via telephone lines or over the school based Ethernet connected to a central monitoring office. New and upgraded schools are added to the system with the newest technology, increasing the schools systems ability to maintain proper operating conditions.

The system:

- Schedules the start and stop time of heating and cooling equipment, programmed according to the occupancy.
- Automatically sets back space temperature during evening/unoccupied hours during the winter.
- Pre-programmed heating and cooling of all special evening and weekend events to reduce unnecessary runtime of the HVAC equipment and to make the building comfortable prior to scheduled events.
- Curtails summer air conditioning to avoid peak usage costs.
- Uses control strategies to limit electrical demand charges.
- Increases the efficiency and safety of equipment with a structured preventive maintenance program.
- Allows remote shutdown of facility for emergency reasons.

This system also provides alarms for the Operations and Maintenance Division if a major HVAC problem occurs during non-school hours. This allows the division time to service the problem before collateral damage can occur, and ensures that the school opens on time for students and staff.

X. School Inventory and Renovations:

School	Total Sq. Footage	Year Occupied	Year Renovated	Type of Renovation
Annapolis Elementary	37,475	1896	1982	Central AC 1992
Green Street	22,500	1905		
Eastport Elementary	34,658	1913	1993	Full
Student Services Center	15,000	1921		
Ferndale Early Childhood Center *	18,287	1925	1962/2003	Addition/ 1925 bldg demolished
Odenton Elementary	71,302	1930	1991	Full addition
Severn Elementary	55,975	1932	1988	Full addition
Glen Burnie Senior	373,327	1932	1989	Cafeteria addition
Southern Middle	200,102	1933	1988/2003	Partial addition/addition
Bates Middle	145,520	1934	1981	Partial
Severna Park Elementary	48,662	1937	1992	Full addition
Phoenix Annapolis	36,000	1940		
Staff Development (Carver Center)	20,711	1949	1962	Partial
George Fox Middle	164,393	1949	1989	Full
Arundel Senior	253,700	1950	1985	Partial addition
Belle Grove Elementary	31,850	1952		
Parole Elementary	54,280	1952	1993	Full addition
Edgewater Elementary	52,326	1953	1985	Full addition
Lake Shore Elementary	36,134	1953	1958	Addition
Belvedere Elementary	65,476	1954	2000	Full addition
Brooklyn Park Middle	248,809	1954	2000	Full renovation
Jessup Elementary	83,868	1955	1975/1995/1997	Full addition – Pre-K walls
Overlook Elementary	41,154	1955	1972	Addition
Riviera Beach Elementary	50,916	1955	1971/2000	Full addition/walls
Lothian Elementary	66,281	1956	1993	Partial addition
West Annapolis Elementary	31,669	1956	1984	Full addition
Jones Elementary	45,393	1957	1999	Full addition
Oakwood Elementary	42,132	1957	1992	Sound abatement
Richard Henry Lee Elementary	61,000	1957	1971	Full addition
Folger McKinsey Elementary	52,849	1958	1971	Full addition
Pasadena Elementary	46,259	1958	1963	Addition
Point Pleasant Elementary I	46,373	1958	1960	Addition
J. Albert Adams Academy at Adams Park	39,257	1958		
Point Pleasant Elementary II	55,748	1958		
Freetown Elementary	49,457	1959	1966/1995	Addition/addition
North Glen Elementary	43,565	1959		
Severna Park Senior	296,191	1959	1973/1982	Full addition /cafeteria
Pershing Hill Elementary	39,200	1960		
Arundel Middle	140,032	1961	1983	Renovation except AC
Carrie Weedon	11,100	1961		
North County Senior	312,680	1961	1993/2000/2002	Full addition/addition/addition
Lindale Middle	191,583	1961	1996	Full addition
Corkran Middle	151,790	1962	1990	Sound abatement
Benfield Elementary	42,234	1962		
Deale Elementary	53,444	1962	1995	Full addition
Glen Burnie Park Elementary	43,641	1962	1992	Sound abatement
* Under construction at this time				

School	Total Sq. Footage	Year Occupied	Year Renovated	Type of Renovation
Tracey's Elementary*	61,107	1962	1966	Addition
Tyler Heights Elementary	47,544	1962	1970/1996	Addition/Pre-K addition
Rolling Knolls Elementary	38,951	1963	1973/1995	Pre-K addition
George Cromwell Elementary	42,110	1964		
West Meade Elementary	38,093	1964		
Annapolis Middle	216,000	1964		
Northeast Senior	207,737	1964	1992	Science/partial
Maryland City Elementary	49,130	1965	1996	Partial
Millersville Elementary	45,994	1965		
Woodside Elementary	51,946	1965		
Arnold Elementary	56,255	1967	1989	HVAC for media
Germantown Elementary	54,748	1967		
Hillsmere Elementary	49,130	1967		
Waugh Chapel Elementary	49,130	1967		
MacArthur Middle	211,620	1967		
Severna Park Middle	162,274	1967		
Fort Smallwood Maintenance	30,292	1967		
Cape St. Claire Elementary	72,500	1968	1970/2000	Addition/revitalization
Southern Senior	226,206	1968		
Crofton Elementary	66,321	1969	1999/2003	Addition/gym addition
Quarterfield Elementary	49,130	1969		
Southgate Elementary	45,994	1969		
Arlington Echo	10,509	1969		
Bodkin Elementary	72,267	1970		
Brock Bridge Elementary	73,113	1970	2001	Mech room addition
Hilltop Elementary	74,290	1970	1996/2002	Pre-K addition/mech room addition
Crofton Woods Elementary	73,113	1971		
Linthicum Elementary	71,682	1971	2003	Mech room addition
Manor View Elementary	72,267	1971		
Oak Hill Elementary	73,113	1971	2002	Mech room addition
Shady side Elementary	73,113	1971	2001	Mech room addition
Sunset Elementary	73,113	1971	2001	Mech room addition
Marley Glen Special	50,318	1971		
Brooklyn Park Elementary	74,540	1972		
Central Elementary	73,113	1972	2003	Mech room addition
Georgetown Elementary	68,216	1972		
Van Bokkelen Elementary	70,525	1973	1996	Addition
Four Seasons Elementary	75,254	1974		
Magothy River Middle	170,000	1974		
Rippling Woods Elementary	76,500	1974		
Severn River Middle	170,000	1974		
Center of Applied Technology North	148,634	1974	1998	Addition auto body shop
Central Office	113,750	1974		
Broadneck Elementary	74,540	1975		
High Point Elementary	75,764	1975	2002	Mech room addition
Old Mill Middle North	179,000	1975		
Old Mill Middle South	179,000	1975		
Old Mill Senior	359,630	1975		
Chesapeake Bay Middle	343,446	1976		
Chesapeake Senior	322,400	1976		
Central Special	53,333	1976	1986/2001	Addition/mech room addition
Central Middle	158,125	1977		
Meade Senior	330,900	1977		
*under construction at this time				

School	Total Sq. Footage	Year Occupied	Year Renovated	Type of Renovation
Center of Applied Technology South	91,507	1977	1994	Addition
Fort Smallwood Elementary	64,907	1977	2000	Addition
South River Senior	295,900	1978	2001	Science lab
Annapolis Senior	260,000	1979		
Crofton Middle	113,000	1982	1999	Addition
Broadneck Senior	288,000	1982	1990/1997	Renovation/addition
Ruth Parker Eason School	54,526	1985	2002	Mech room addition
Shipleys Choice Elementary	68,119	1988		
Crofton Meadows Elementary	68,338	1989		
Windsor Farms Elementary	68,310	1989		
Solley Elementary	74,082	1995		
Park Elementary	68,779	1996		
Mary E. Moss Academy	13,359	1997		
South Shore Elementary	49,508	1997		
Meade Heights Elementary	74,000	1997		
Jacobsville Elementary	66,756	1998		
Meade Middle	150,000	1998		
Ridgeway Elementary	69,152	1999		
Piney Orchard Elementary	66,790	2000		
Glendale Elementary	75,065	2002		
Davidsonville Elementary	69,111	2002		
Seven Oaks Elementary	81,209	2005		
Marley Elementary	67,111	2005		
Mayo Elementary	60,648	2005		
Marley Middle	154,493	2006		
Harman Elementary	79,875	2007		
Total Square Footage	12,344,037			

XI. SUMMARY OF THE MAINTENANCE BACKLOG

Category	Estimated Cost
Bleachers	\$3,600,000
Carpentry	9,048,500
Carpet	2,437,700
Ceiling tile	2,837,100
Doors	8,476,900
Lockers	2,508,300
Walls	3,500,900
Roof Systems	8,607,500
Clocks and Bells	830,000
Electrical wiring	5,569,000
Fire Alarms	6,400,000
Interior Lighting	4,777,000
P.A. Systems	3,500,000
Exterior Lighting	2,284,000
Asphalt	16,710,000
Concrete	2,454,900
Athletic Grounds	3,585,000
Refinish floors	297,700
Plumbing	5,025,000
A/C Systems	32,654,000
Building Envelope	24,755,000
Boilers	2,000,000
Asbestos Ceiling and Lights	8,125,000
Asbestos Floors and other	1,040,000
Total	\$161,023,500

XII. FIVE-YEAR SCHEDULED MAINTENANCE AND REPAIR PLAN

The following pages list the Five-Year Maintenance Plan, by school, for accomplishing major projects. This list, which indicates the projects that are planned for the next five years, is based on funding assumptions for both operating and capital programs. Projects in which there are no funds or whose condition places it beyond the Five-Year window are given LR (long range) designation. The majority of the listing shows backlog projects (i.e. replace carpet) but also includes some recurring projects based on life cycle (i.e. interior painting) and environmental mandate compliance requirements. This information is shared with the schools' PTA, CAC, and any other group interested in the process.

**Anne Arundel County Public Schools
Maintenance Division
FIVE-YEAR PLAN MAJOR CONTRACT PROJECTS**

<u>Project Requested</u>	<u>Work Order #</u>	<u>Estimated Cost</u>	<u>Fund Year</u>
**School: A.A. LEARNING CENTER			
REMOVE ASBESTOS TILE IN MPR & INSTALL NEW TILE.	Y04009892	45,000	2007
REPLACE FIRE ALARM SYSTEM	90303022	185,000	2010
REPLACE SIDEWALK.	98182062	2,900	2011
REPLACE INTERIOR LIGHTS AND EMERGENCY LIGHTS.	98190077	205,000	LR
REPLACE CLOCKS.	98190079	18,000	LR
REPLACE BATHROOM PARTITIONS THROUGHOUT.	Y00000231	26,000	LR
REPLACE WINDOWS	Y03007148	900,000	LR
**School: ANNAPOLIS ELEM.			
PAINT INTERIOR OF BUILDING.	Y02007427	40,000	2007
REPLACE 1 CHILLER & ROOF TOP UNITS.	94186120	1,200,000	LR
REPLACE ALL PLUMBING FIXTURES AND STALLS.	98187020	125,000	LR
REPLACE WIRING AND BREAKER PANELS.	98189054	120,000	LR
REPLACE EXTERIOR LIGHTS.	98189060	22,000	LR
REPLACE EMERGENCY LIGHTS.	98189061	25,000	LR
REPLACE CLOCKS.	98189062	22,000	LR
REPLACE WALLS	98191025	150,000	LR
REPLACE CEILINGS	98191026	250,000	LR
REPLACE DOORS	98191027	100,000	LR
REPLACE BATHROOM PARTITIONS THROUGHOUT.	Y00000125	26,000	LR
REPLACE PA SYSTEM	Y00009655	180,000	LR
REPLACE CASEWORK & COUNTER TOPS	Y01010609	100,000	LR
**School: ANNAPOLIS MIDDLE			
REPLACE CARPET TILE WITH ASBESTOS REMOVAL. PHASE 4.	Y05005513	100,000	2007
PAINT INTERIOR	Y03010064	180,000	2008
REMOVE & REPLACE ASBESTOS FLOORTILE	Y05009944	150,000	2008
REPAIR PARKING LOT AND SERVICE DRIVE.	91037048	160,000	2009
REPLACE ALL ROOFTOP UNITS	94186133	250,000	2010
REFINISH WOOD FLOOR IN SHOP 402, 403, 404, 409, AND 410.	95212023	20,000	LR
REPLACE EXTERIOR LIGHTS.	98189063	90,000	LR
REPLACE CLOCKS.	98189065	30,000	LR
REPLACE WINDOWS	98191028	2,000,000	LR
REPLACE BATHROOM PARTITIONS THROUGHOUT.	Y00000198	102,000	LR
REPAIR FRONT PARKING LOT AND DRIVEWAY.	Y01006019	105,000	LR
REPLACE INDOOR BLEACHERS	Y01009974	50,000	LR
REPLACE CASEWORK & COUNTER TOPS.	Y01010661	200,000	LR
REPLACE EXTERIOR DOORS AND FRAMES.	Y01010809	250,000	LR
REPLACE SIDEWALK, CURB, & GUTTER.	Y03007791	20,000	LR
**School: ANNAPOLIS SENIOR			
PAINT INTERIOR OF BUILDING.	Y02007417	250,000	2007

**Anne Arundel County Public Schools
Maintenance Division
FIVE-YEAR PLAN MAJOR CONTRACT PROJECTS**

<u>Project Requested</u>	<u>Work Order #</u>	<u>Estimated Cost</u>	<u>Fund Year</u>
REPLACE SIDEWALK, CURB AND GUTTERS.	98182034	55,500	2009
REPLACE OUTDOOR BLEACHERS	90297210	150,000	LR
RESURFACE DRIVEWAY, PARKING LOT & SERVICE DRIVE	92288032	1,200,000	LR
RENOVATE GIRLS SOCCER FIELD.	98189052	100,000	LR
REPLACE DOORS	98191030	250,000	LR
REPLACE BATHROOM PARTITIONS THROUGHOUT.	Y00000199	74,000	LR
REPLACE LOCKERS IN GYM AREAS	Y02007589	100,000	LR
REPLACE OR SLEEVE MAIN SANITARY SEWER LINE IN FRONT OF SCHOOL	Y04004004	100,000	LR
REPLACE RUBBER FLOOR IN MINI GYM WITH WOOD	Y06009541	40,000	LR
**School: ARLINGTON ECHO			
PAINT INTERIOR	Y01010707	100,000	2007
REPLACE ALL ROOFTOP UNITS	94186112	300,000	2010
REPLACE 20 EXT. WOODEN DOORS	89311305	30,000	LR
REPLACE WINDOWS IN POOL AREA	98191021	5,000	LR
REPLACE WINDOWS IN RESOURCE LAB	98191022	25,000	LR
REPLACE BATHROOM PARTITIONS THROUGHOUT.	Y00000227	20,000	LR
REPLACE SEWAGE LIFT STATION	Y01010007	40,000	LR
**School: ARNOLD ELEM.			
REPLACE CURB AND GUTTER, CURB CUT, STEPS, AND SIDEWALK.	95086029	46,000	2008
STAGE FLOOR SANDED AND REFINISHED	9236044	3,100	LR
REPAVE DRIVEWAY TO KITCHEN AND DRIVEWAY.	92136017	90,000	LR
REMOVE AND REPLACE ASBESTOS CEILINGS AND LIGHTS- PHASE 1.	95081066	250,000	LR
REMOVE AND REPLACE ASBESTOS CEILINGS AND LIGHTS- PHASE 2.	95081067	250,000	LR
REMOVE AND REPLACE ASBESTOS CEILINGS AND LIGHTS- PHASE 3.	95081068	225,000	LR
REPLACE FIRE ALARM SYSTEM	98189068	175,000	LR
REPLACE BATHROOM PARTITIONS THROUGHOUT.	Y00000126	22,000	LR
REPLACE CASEWORK AND COUNTER TOPS.	Y01010613	125,000	LR
**School: ARUNDEL MIDDLE			
IN-HOUSE INSTALLATION OF CARPET AND TILE WITH LIMITED ASBESTOS REMOVAL.	98183026	17,000	2007
PAINT INTERIOR OF BUILDING.	Y02007418	250,000	2008
REPAIR ROADWAYS, PARKING LOTS & STORM DRAINS	91339037	900,000	LR
REPLACE INTERIOR LIGHTS AND EMERGENCY LIGHTS.	98189073	350,000	LR
REPLACE EXTERIOR LIGHTS.	98189074	90,000	LR
REPLACE CLOCKS.	98189084	24,000	LR
REPLACE ALL LOCKERS IN BOYS GYM LOCKER ROOM.	99168010	40,000	LR
REPLACE BATHROOM PARTITIONS THROUGHOUT.	Y00000192	56,000	LR
REPLACE INDOOR BLEACHERS	Y01009975	50,000	LR
REPLACE CASEWORK & COUNTER TOPS.	Y01010662	200,000	LR
REPLACE EXTERIOR DOORS AND FRAMES.	Y01010810	250,000	LR
**School: ARUNDEL SENIOR			

Anne Arundel County Public Schools
Maintenance Division
FIVE-YEAR PLAN MAJOR CONTRACT PROJECTS

<u>Project Requested</u>	<u>Work Order #</u>	<u>Estimated Cost</u>	<u>Fund Year</u>
REPLACE FOLDING DOOR IN AUX. GYM	Y03007035	50,000	2007
REPLACE 2 BOILERS	Y04003991	450,000	2007
PAINT INTERIOR OF BUILDING.	Y02007419	250,000	2008
REPLACE SIDEWALK, CURB AND GUTTERS.	98182064	66,100	2009
REPLACE AND REPAIR DRIVE AND PARKING LOT	98089038	1,000,000	LR
RENOVATE J.V. BASEBALL FIELD.	98189048	150,000	LR
RENOVATE STADIUM FIELD.	99026031	75,000	LR
REPLACE INDOOR BLEACHERS.	99098016	150,000	LR
REPLACE OUTDOOR BLEACHERS.	99098025	150,000	LR
REPLACE BATHROOM PARTITIONS THROUGHOUT.	Y00000193	88,000	LR
REPLACE FIRE ALARM.	Y00010040	320,000	LR
REPLACE LOCKERS IN GYM AREAS	Y02007591	100,000	LR
**School: BATES MIDDLE			
PHASE 5, REPLACE CARPET/TILE WITH ASBESTOS REMOVAL	Y05009945	150,000	2007
REPLACE FIRE ALARM SYSTEM	Y06010049	300,000	2007
REPLACE ALL ROOFTOP UNITS	94186104	1,000,000	2008
PAINT INTERIOR/EXTERIOR.	Y04009767	150,000	2010
REPLACE ALL HALL LOCKERS	89307072	250,000	LR
RESURFACE DRIVE CHESAPEAKE HALL	98089058	40,000	LR
REPLACE RUNNING TRACK.	98113019	100,000	LR
REPLACE CEILINGS	98191031	800,000	LR
REPLACE BATHROOM PARTITIONS THROUGHOUT.	Y00000200	48,000	LR
REPLACE INDOOR BLEACHERS	Y01009976	50,000	LR
REPLACE CASEWORK & COUNTER TOPS.	Y01010663	200,000	LR
REPLACE EXTERIOR DOORS AMD FRAMES.	Y01010811	200,000	LR
**School: BELLE GROVE ELEM.			
RE-COAT ROOF	Y01011241	82,500	2007
SAND & RE-FINISH STAGE FLOOR	Y04007283	2,500	2007
REMOVE ASBESTOS TILE IN MPR & INSTALL NEW TILE.	Y04009872	45,000	2008
REPLACE WINDOWS THROUGHOUT THE BLDG.	96218030	500,000	LR
REPLACE SIDEWALK.	98182057	4,700	LR
REPLACE DISTRIBUTION CENTER, BREAKER PANEL.	98189085	85,000	LR
REPLACE PA SYSTEM	98189088	120,000	LR
REPLACE EMERGENCY LIGHTS.	98189089	25,000	LR
REPLACE CLOCKS.	98189091	18,000	LR
REPLACE CABINETS AND COUNTERTOPS IN ROOM 9 & 15.	99047061	7,000	LR
REPLACE BATHROOM PARTITIONS THROUGHOUT.	Y00000127	28,000	LR
REPLACE EXTERIOR DOORS AND FRAMES.	Y01010734	40,000	LR
**School: BELVEDERE ELEM.			
PAINT INTERIOR	Y01010757	60,000	2008
REPLACE AIR COOLER CHILLER	Y03008750	750,000	LR

**Anne Arundel County Public Schools
Maintenance Division
FIVE-YEAR PLAN MAJOR CONTRACT PROJECTS**

<u>Project Requested</u>	<u>Work Order #</u>	<u>Estimated Cost</u>	<u>Fund Year</u>
**School: BENFIELD ELEM.			
IN-HOUSE INSTALLATION OF CARPET AND TILE WITH LIMITED ASBESTOS REMOVAL.	99103052	28,000	2007
REMOVE ASBESTOS TILE IN MPR & INSTALL NEW TILE.	Y04009874	45,000	2008
REPAIR/REPLACE SIDEWALK	96107106	27,500	2011
REPLACE INTERIOR LIGHTS AND EMERGENCY LIGHTS.	98189095	205,000	LR
REPLACE EXTERIOR LIGHTS.	98189096	36,000	LR
REPLACE CLOCKS.	98189099	18,000	LR
REPLACE BATHROOM PARTITIONS THROUGHOUT.	Y00000128	20,000	LR
REPLACE CASEWORK AND COUNTER TOPS.	Y01010614	150,000	LR
REPLACE EXTERIOR DOORS AND FRAMES.	Y01010760	40,000	LR
**School: BODKIN ELEM.			
REPLACE FOLDING DOORS IN CAFETERIA.	Y01009931	50,000	2007
UPGRADE WATER TREATMENT PLANT	Y06007165	1,000,000	2008
REPLACE PA SYSTEM	94222039	145,000	2011
REPLACE CONCRETE SIDEWALK AND CURB AND GUTTER	Y05007474	14,300	2011
REPLACE BATHROOM PARTITIONS THROUGHOUT.	Y00000129	34,000	LR
REPLACE EXTERIOR LIGHTING.	Y00010052	50,000	LR
REPLACE CASEWORK AND COUNTER TOPS	Y01010619	50,000	LR
**School: BROADNECK ELEM.			
REPLACE FOLDING DOORS IN CAFETERIA.	Y01009932	50,000	2007
RECOAT MEDIA, GYM, AND CAFE.	Y04010641	60,000	2007
INSTALL NEW FLOOR TILE IN MULTI-PURPOSE ROOM.	Y01006464	60,000	2009
REPLACE SIDEWALK, CURB AND GUTTERS.	98182035	29,000	2010
PAINT INTERIOR/EXTERIOR.	Y04009769	40,000	2010
RESURFACE DRIVEWAY AND PARKING LOT	98089045	300,000	LR
REPLACE EMERGENCY LIGHTS.	98189114	25,000	LR
REPLACE CLOCKS.	98189115	22,000	LR
REPLACE BATHROOM PARTITIONS THROUGHOUT.	Y00000132	44,000	LR
REPLACE CASEWORK AND COUNTER TOPS	Y01010620	50,000	LR
REPLACE EXTERIOR DOORS AND FRAMES.	Y01010761	50,000	LR
REPLACE PA SYSTEM	Y06007298	180,000	LR
**School: BROADNECK SENIOR			
RETREAT RUNNING TRACK.	Y00017054	100,000	2007
PAINT INTERIOR	Y01010708	250,000	2007
SAND AND FINISH MAIN GYM FLOOR AND AUXILLARY GYM FLOOR	Y06008943	35,000	2007
REPLACE 2 CHILLERS AND TOWER	Y03008751	1,200,000	2010
REPLACE OUTDOOR BLEACHERS.	99098026	150,000	LR
REPLACE BATHROOM PARTITIONS THROUGHOUT.	Y00000202	18,000	LR
RENOVATE BASEBALL FIELD.	Y00017048	150,000	LR
RENOVATE PRACTICE FIELD BEHIND STADIUM.	Y00017050	100,000	LR

**Anne Arundel County Public Schools
Maintenance Division
FIVE-YEAR PLAN MAJOR CONTRACT PROJECTS**

<u>Project Requested</u>	<u>Work Order #</u>	<u>Estimated Cost</u>	<u>Fund Year</u>
RENOVATE J.V. BASEBALL FIELD.	Y00017053	150,000	LR
REPAIR DRIVEWAYS AND PARKING LOTS.	Y01006034	400,000	LR
REPLACE CASEWORK & COUNTER TOPS.	Y01010664	300,000	LR
REPLACE 2 BOILERS	Y04003993	450,000	LR
REPLACE CONCRETE SIDEWALK AND CURB AND GUTTER	Y05007475	10,500	LR
REPLACE AUDITORIUM SEATING	Y05015457	250,000	LR
**School: BROCK BRIDGE ELEM.			
REPLACE FOLDING DOORS IN CAFETERIA.	Y01009933	50,000	2007
BAD CONDENSATION PROBLEM IN ALL PODS , LEAKING ALL OVER	Y05011176	14,000	2007
PAINT INTERIOR/EXTERIOR.	Y04009770	40,000	2010
REPLACE SIDEWALK, CURB AND GUTTERS.	98182060	13,000	2011
REMOVE AND REPLACE ASBESTOS CEILINGS AND LIGHTS- PHASE 1.	95081079	225,000	LR
REMOVE AND REPLACE ASBESTOS CEILINGS AND LIGHTS- PHASE 2.	95081080	250,000	LR
REMOVE AND REPLACE ASBESTOS CEILINGS AND LIGHTS- PHASE 3.	95081081	185,000	LR
STAGE NEEDS TO BE REFINISHED.	99145038	2,500	LR
REPLACE BATHROOM PARTITIONS THROUGHOUT.	Y00000133	34,000	LR
REPLACE CASEWORK AND COUNTER TOPS	Y01010621	50,000	LR
REPLACE EXTERIOR DOORS AMD FRAMES.	Y01010765	60,000	LR
ALL DOORS AND STAGE SANDED AND VARNISHED	Y02001302	2,500	LR
REPLACE P.A. SYSTEM	Y04015894	145,000	LR
**School: BROOKLYN PARK ELEM.			
NEED TO REPLACE WORN FLOOR TILE IN GYM AND CAFE	Y02017220	30,000	2008
SAND AND FINISH STAGE FLOOR	89318299	2,500	LR
REPLACE FIRE ALARM SYSTEM	98189100	175,000	LR
REPLACE EMERGENCY LIGHTS.	98189101	25,000	LR
REPLACE CASEWORK AND COUNTER TOPS	Y01010622	50,000	LR
REPLACE EXTERIOR DOORS AMD FRAMES.	Y01010767	60,000	LR
**School: C.A.T.N.-NORTH			
PAINT INTERIOR	Y01010697	250,000	2007
REPLACE SIDEWALK, CURB, & GUTTER.	Y03007790	62,500	2011
REPAIR ASPHALT PHASE III	97177040	300,000	LR
REPLACE FIRE ALARM SYSTEM.	98189129	280,000	LR
REPLACE BATHROOM PARTITIONS THROUGHOUT.	Y00000228	40,000	LR
REPLACE EXTERIOR DOORS AND FRAMES AND OVERHEAD DOORS.	Y01010822	250,000	LR
**School: C.A.T.S.-SOUTH			
REPLACE CARPET & TILE	Y02007532	35,000	2007
PAINT INTERIOR/EXTERIOR.	Y04009773	240,000	2010
REPLACE EXTERIOR DOORS AMD FRAMES.	Y01010823	250,000	LR
**School: CAPE ST. CLAIRE ELEM			
ANNEX BUILDING - REPLACE 13 INCREMENTAL UNITS WITH 2 RTU & DUCT WORK	Y06008906	150,000	2007

**Anne Arundel County Public Schools
Maintenance Division
FIVE-YEAR PLAN MAJOR CONTRACT PROJECTS**

<u>Project Requested</u>	<u>Work Order #</u>	<u>Estimated Cost</u>	<u>Fund Year</u>
**School: CARRIE WEEDON			
REPLACE SIDEWALK.	98182088	8,500	2011
REPLACE WATER TREATMENT PLANT	97154061	200,000	LR
REPAIR DRIVEWAY PARKING LOT AND PLAY AREA	98089067	70,000	LR
REPLACE DISTRIBUTION CENTER, BREAKER PANELS	98189121	60,000	LR
REPLACE INTERIOR LIGHTS AND EMERGENCY LIGHTS.	98189124	140,000	LR
REPLACE FIRE ALARM SYSTEM	98189127	160,000	LR
IN-HOUSE INSTALLATION OF CARPET AND TILE WITH LIMITED ASBESTOS REMOVAL.	98191036	12,000	LR
REPLACE WINDOWS	98191043	400,000	LR
**School: CENTRAL ELEM.			
REPAIR FOLDING DOORS IN CAFETERIA.	Y01009935	50,000	2007
REPLACE MULTI-PURPOSE ROOM CEILINGS AND FLOORS.	Y03008747	90,000	2008
CORNER WALL OF GYM HAS SETTLEMENT CRACKS	96017013	70,000	LR
SAND AND REFINISH STAGE FLOOR	96050028	2,500	LR
RESURFACE PLAY AREA AND REPAIR DRIVEWAY	98089061	150,000	LR
REPAIR OR REPLACE WINDOWS THROUGHOUT BUILDING	98120057	500,000	LR
REPLACE EMERGENCY LIGHTS.	98189131	25,000	LR
REPLACE BATHROOM PARTITIONS THROUGHOUT.	Y00000136	34,000	LR
REPLACE PA SYSTEM	Y01003418	145,000	LR
REPLACE EXTERIOR DOORS AND FRAMES.	Y01010768	60,000	LR
**School: CENTRAL MIDDLE			
REPLACE FOLDING DOOR IN CAFE	Y03007037	50,000	2007
PAINT INTERIOR	Y03010066	180,000	2009
REPLACE RUNNING TRACK SURFACE	92294046	50,000	LR
REPLACE BATHROOM PARTITIONS THROUGHOUT.	Y00000204	50,000	LR
STAGE FLOOR NEEDS TO BE SANDED AND REFINISHED.	Y02007519	3,000	LR
REMOVE FREE STANDING LOCKERS AND REPLACE WITH NEW LOCKERS THAT MOUNT ON THE WALLS	Y03013639	90,000	LR
**School: CENTRAL SPECIAL ED.			
REPLACE FOLDING DOORS IN CAFETERIA.	Y01009956	50,000	2010
REPLACE BATHROOM PARTITIONS THROUGHOUT.	Y00000230	24,000	LR
REPLACE DRIVEWAY	Y02007145	200,000	LR
**School: CHESAPEAKE BAY MIDD.			
REPLACE SIDEWALK, CURB, & GUTTER.	Y03007793	44,500	2010
REPLACE FOLDING WALLS IN MINI GYMS A & B	Y00009415	16,000	2011
ASPHALT REPAIRS. PHASE 1	Y01000574	1,000,000	2011
REPLACE 23 EXTERIOR DOORS	89307103	50,000	LR
REPLACE 25 INTERIOR DOORS	89307105	25,000	LR
REPLACE CLOCKS.	98189142	48,000	LR
REPAIR PARKING LOT AND SERVICE DRIVE WAY. PHASE 2	Y01005954	250,000	LR
REPLACE CASEWORK & COUNTER TOPS.	Y01010665	300,000	LR

Anne Arundel County Public Schools
Maintenance Division
FIVE-YEAR PLAN MAJOR CONTRACT PROJECTS

<u>Project Requested</u>	<u>Work Order #</u>	<u>Estimated Cost</u>	<u>Fund Year</u>
REPLACE DOMESTIC HOT WATER LINE	Y06007166	250,000	LR
**School: CHESAPEAKE SENIOR			
SAND AND REFINISH MINI GYM WOOD FLOOR	Y02010076	6,000	2007
ASPHALT REPAIRS PHASE II	Y05009753	600,000	2007
SAND AND FINISH MAIN GYM FLOOR	Y06008942	40,000	2007
RETREAT RUNNING TRACK	Y03007071	100,000	2010
PAINT INTERIOR/EXTERIOR.	Y04009772	200,000	2010
RENOVATE BOYS SOCCER FIELD.	98189050	100,000	LR
REPLACE COUNTER-TOPS IN FOODS LAB.	99105053	30,000	LR
REPLACE CASEWORK & COUNTER TOPS.	Y01010666	300,000	LR
REPLACE LOCKERS IN GYM AREAS	Y02007590	100,000	LR
REPLACE BATHROOM PARTITIONS.	Y03007928	75,000	LR
**School: CORKRAN MIDDLE			
REPLACE HALLWAY WINDOWS	Y06010788	50,000	2007
REPLACE 1 CHILLER, ALL ROOF TOP UNITS, AND 6 SPLIT A/C UNITS	94186075	1,800,000	2008
REPLACE SIDEWALK AND CURB AND GUTTER	95086057	59,200	2009
REPLACE ALL LOCKERS IN BOYS AND GIRLS LOCKER ROOMS.	97184027	80,000	LR
TAR AND CHIP WALKING PATH	98089064	15,000	LR
REPLACE DISTRIBUTION CENTER, AND TRANSFORMERS.	98189135	300,000	LR
REPLACE INTERIOR LIGHTS AND EMERGENCY LIGHTS.	98189138	150,000	LR
REPLACE EXTERIOR LIGHTS.	98189141	120,000	LR
REPLACE BATHROOM PARTITIONS THROUGHOUT.	Y00000206	40,000	LR
REPLACE EXTERIOR DOORS AMD FRAMES.	Y01010813	150,000	LR
REPLACE 48 LIGHT FIXTURES IN THE MAIN GYM	Y02006282	40,000	LR
**School: CROFTON ELEM.			
RE-COAT ROOFS	Y01011252	175,000	2007
REMOVE ASBESTOS TILE IN MPR & INSTALL NEW TILE.	Y04009876	45,000	2008
REPLACE SIDEWALK, CURB AND GUTTERS.	98182074	14,300	2011
REPLACE WIRING AND BREAKER PANELS.	98189145	85,000	LR
REPLACE INTERIOR LIGHTS AND EXTERIOR LIGHTS	98189148	205,000	LR
REPLACE FIRE ALARM SYSTEM	98189149	175,000	LR
REPLACE CLOCKS.	98189151	18,000	LR
REPLACE BATHROOM PARTITIONS THROUGHOUT.	Y00000137	26,000	LR
REPLACE CASEWORK AND COUNTER TOPS.	Y01010615	150,000	LR
REPLACE EXTERIOR DOORS AMD FRAMES.	Y01010769	60,000	LR
RESURFACE PARKING LOT AND DRIVE	Y03006630	300,000	LR
REPLACE WINDOWS	Y03007146	600,000	LR
**School: CROFTON MEADOWS ELEM			
REPLACE 1 CHILLER AND TOWER & BOILERS.	94186074	1,600,000	2007
PAINT INTERIOR	Y01010710	50,000	2007
REPLACE FIRE ALARM.	Y00010041	175,000	2009

**Anne Arundel County Public Schools
Maintenance Division
FIVE-YEAR PLAN MAJOR CONTRACT PROJECTS**

<u>Project Requested</u>	<u>Work Order #</u>	<u>Estimated Cost</u>	<u>Fund Year</u>
REPLACE FOLDING DOORS IN CAFETERIA.	Y01009936	50,000	2011
REPLACE EMERGENCY LIGHT.	98189152	36,000	LR
REPLACE ASPHALT BY DUMPSTERS.	Y00016352	9,000	LR
REPLACE PA SYSTEM	Y01003419	180,000	LR
REPLACE SIDEWALK, CURB, & GUTTER.	Y03007789	10,000	LR
UPGRADE SECURITY LIGHTING	Y06011595	0	LR
**School: CROFTON MIDDLE			
REPLACE FOLDING DOORS IN CAFETERIA.	Y01009926	50,000	2007
REPLACE ALL INCREMENTAL UNITS	94186111	350,000	2009
REPLACE SIDEWALK, CURB AND GUTTERS.	98182073	13,500	2011
REPLACE BATHROOM PARTITIONS THROUGHOUT.	Y00000207	30,000	LR
REPLACE 3 STORMDRAINS.	Y00016355	15,000	LR
REPLACE CASEWORK & COUNTER TOPS.	Y01010668	200,000	LR
REPLACE EXTERIOR DOORS AMD FRAMES.	Y01010814	200,000	LR
REPAIR INLETS	Y01016427	20,000	LR
REPLACE FRONT DRIVEWAY	Y02007149	20,000	LR
REPLACE LOCKERS IN GYM AREAS	Y02007592	100,000	LR
**School: CROFTON WOODS ELEM.			
REPLACE FOLDING DOORS IN CAFETERIA.	Y01009937	50,000	2007
REPLACE MULTI-PURPOSE ROOM CEILINGS AND FLOORS.	Y03008748	90,000	2008
REPLACE CONCRETE SIDEWALK	Y05007472	5,400	2011
REPLACE EMERGENCY LIGHTS.	98189144	25,000	LR
REPLACE BATHROOM PARTITIONS THROUGHOUT.	Y00000138	24,000	LR
REPLACE CASEWORK AND COUNTER TOPS	Y01010623	50,000	LR
REPLACE EXTERIOR DOORS AMD FRAMES.	Y01010770	60,000	LR
**School: DEALE ELEM.			
REPLACE ICE STORAGE WITH CHILLER, TOWER, AND PUMPS.	Y03008752	800,000	2007
REPAIR FOLDING DOORS IN CAFETERIA.	Y01009938	50,000	2011
**School: EASTPORT ELEM.			
REPLACE ROOF	Y00006391	425,000	2008
REPLACE CARPET AND TILE	Y02006794	40,000	2008
REPLACE 1 CHILLER, TOWER AND ALL ROOF TOP UNITS	94186108	1,300,000	2009
REPLACE BATHROOM PARTITIONS THROUGHOUT.	Y00000140	12,000	LR
**School: EDGEWATER ELEM.			
REMOVE ASBESTOS TILE IN MPR & INSTALL NEW TILE.	Y04009877	45,000	2008
REPLACE ALL ROOF TOP UNITS	94186115	150,000	2009
REPLACE CLOCKS.	98189161	18,000	LR
REPLACE WINDOWS	98191047	400,000	LR
REPLACE BATHROOM PARTITIONS THROUGHOUT.	Y00000141	20,000	LR
RESURFACE PARKING LOT AND PLAY AREA.	Y01001599	150,000	LR
REPLACE CASEWORK AND COUNTER TOPS	Y01010616	150,000	LR

**Anne Arundel County Public Schools
Maintenance Division
FIVE-YEAR PLAN MAJOR CONTRACT PROJECTS**

<u>Project Requested</u>	<u>Work Order #</u>	<u>Estimated Cost</u>	<u>Fund Year</u>
REPLACE EXTERIOR DOORS AMD FRAMES.	Y01010771	50,000	LR
**School: FERNDALE ECLC			
REPLACE EXTERIOR LIGHTS.	98189164	75,000	LR
REPLACE CLOCKS.	98189167	18,000	LR
REPLACE CASEWORK AND COUNTER TOPS	Y01010617	80,000	LR
REPLACE EXTERIOR DOORS AMD FRAMES.	Y01010772	50,000	LR
**School: FOLGER MCKINSEY ELEM			
RECOAT ADMINISTRATION, MULTI PURPOSE ROOM, AND CLASSROOM ROOFS	Y04010643	100,000	2007
REPLACE PA SYSTEM	Y01003420	145,000	2008
REPLACE ALL ROOFTOP UNITS	94186123	500,000	2010
PAINT INTERIOR/EXTERIOR.	Y04009775	40,000	2010
REFINISH MULTI PURPOSE ROOM STEPS AND STAGE	92022042	2,500	LR
REPLACE WIRING AND BREAKER PANELS	98189168	96,000	LR
REPLACE EMERGENCY LIGHTS.	98189170	36,000	LR
REPLACE CLOCKS.	98189171	30,000	LR
REPLACE BATHROOM PARTITIONS THROUGHOUT.	Y00000143	26,000	LR
REPLACE CASEWORK AND COUNTER TOPS	Y01010618	80,000	LR
REPLACE EXTERIOR DOORS AMD FRAMES.	Y01010773	50,000	LR
**School: FORT SMALLWOOD ELEM.			
RESURFACE DRIVEWAY AND PARKING LOT	98089050	200,000	LR
REPLACE SIDEWALK, CURB, & GUTTER.	Y03007713	13,000	LR
**School: FOUR SEASONS ELEM.			
REPLACE SIDEWALK, CURB AND GUTTER	95086034	35,700	2007
REPLACE FOLDING DOORS IN CAFETERIA.	Y01009939	50,000	2007
RE-COAT ROOFS	Y01011257	70,000	2007
REPLACE CARPET/TILE	Y02006797	150,000	2007
PAINT INTERIOR	Y06010963	40,000	2011
REPLACE EMERGENCY LIGHTS.	98189173	25,000	LR
REPLACE BATHROOM PARTITIONS THROUGHOUT.	Y00000146	38,000	LR
REPLACE CASEWORK AND COUNTER TOPS	Y01010624	50,000	LR
REPLACE EXTERIOR DOORS AMD FRAMES.	Y01010774	60,000	LR
**School: FREETOWN ELEM.			
REPLACE ALL DOORS IN PRIMARY HALL.	89310227	10,300	LR
REPLACE CEILINGS IN MULTI PURPOSE ROOM AND THROUGH OUT BUILDING.	89311061	250,000	LR
REPLACE LIGHTING IN MEDIA AND ART ROOMS	92059014	15,000	LR
REPAVE PARKING LOT AND WALKWAY	97212057	150,000	LR
REPLACE FIRE ALARM	98035031	175,000	LR
REPLACE SIDEWALK.	98182054	7,600	LR
REPLACE EMERGENCY LIGHTS.	98189177	36,000	LR
REPLACE CLOCKS.	98189178	24,000	LR

**Anne Arundel County Public Schools
Maintenance Division
FIVE-YEAR PLAN MAJOR CONTRACT PROJECTS**

<u>Project Requested</u>	<u>Work Order #</u>	<u>Estimated Cost</u>	<u>Fund Year</u>
REPLACE EXTERIOR LIGHTS.	98189179	60,000	LR
REPLACE PA SYSTEM	Y01003403	145,000	LR
REPLACE EXTERIOR DOORS AMD FRAMES.	Y01010775	50,000	LR
IN-HOUSE INSTALLATION OF CARPET AND TILE WITH LIMITED ASBESTOS REMOVAL.	Y02006798	13,000	LR
REPLACE WINDOWS	Y03007147	600,000	LR
REMOVE ASBESTOS TILE IN MPR & INSTALL NEW TILE.	Y04009878	45,000	LR
**School: GEO CROMWELL ELEM.			
REPLACE FIRE ALARM SYSTEM	98189194	175,000	2011
RESURFACE PLAY AREA	98089066	25,000	LR
REPLACE WIRING AND BREAKER PANELS.	98189191	75,000	LR
REPLACE INTERIOR LIGHTS AND EMERGENCY LIGHTS.	98189193	205,000	LR
REPLACE CEILINGS	98191062	280,000	LR
REPLACE WINDOWS	98191064	600,000	LR
REPLACE BATHROOM PARTITIONS THROUGHOUT.	Y00000148	22,000	LR
REPLACE CASEWORK & COUNTER TOPS.	Y01010628	150,000	LR
REPLACE EXTERIOR DOORS AMD FRAMES.	Y01010776	50,000	LR
SAND STAGE SO IT CAN BE RESURFACED	Y04001278	3,000	LR
**School: GEORGE FOX MIDDLE			
REPLACE 1 CHILLER AND TOWER	94186088	1,000,000	2007
UPDATE ELECTRICAL SYSTEMS, INCLUDING SERVICE, SWITCH GEAR, FIRE ALARM, PA SYSTEM	Y01003410	1,200,000	2008
DUMPSTERS NEED CONCRETE PADS INSTALL, 4 TOTAL	98014042	6,000	2010
REPLACE SIDEWALK.	98182038	71,800	2010
PAINT INTERIOR	Y06010962	180,000	2011
REPLACE BATHROOM PARTITIONS THROUGHOUT.	Y00000208	62,000	LR
REPLACE EXTERIOR DOORS AND FRAMES.	Y01010815	200,000	LR
**School: GEORGETOWN EAST ELEM			
REPLACE SIDEWALK.	98182058	66,400	2007
REPLACE FOLDING DOORS IN CAFETERIA.	Y01009940	50,000	2007
REPAIR AND RESURFACE DRIVEWAY AND SERVICE AREA	98089056	250,000	LR
REPLACE BATHROOM PARTITIONS THROUGHOUT.	Y00000149	40,000	LR
REPLACE CASEWORK & COUNTER TOPS.	Y01010629	50,000	LR
REPLACE EXTERIOR DOORS AMD FRAMES.	Y01010777	50,000	LR
**School: GERMANTOWN ELEM.			
REPLACE FIRE ALARM SYSTEM	98190019	175,000	2007
PAINT INTERIOR OF BUILDING.	Y02007431	50,000	2007
REPLACE SIDEWALK, CURB AND GUTTERS.	98182061	15,600	2008
RESURFACE PLAY AREA	Y02007147	25,000	2009
REMOVE AND REPLACE ASBESTOS CEILINGS AND LIGHTS- PHASE 1.	95081073	200,000	LR
REMOVE AND REPLACE ASBESTOS CEILINGS AND LIGHTS- PHASE 2.	95081074	200,000	LR
REMOVE AND REPLACE ASBESTOS CEILINGS AND LIGHTS- PHASE 3.	95081075	135,000	LR

**Anne Arundel County Public Schools
Maintenance Division
FIVE-YEAR PLAN MAJOR CONTRACT PROJECTS**

<u>Project Requested</u>	<u>Work Order #</u>	<u>Estimated Cost</u>	<u>Fund Year</u>
REPLACE EXTERIOR LIGHTS.	98190018	50,000	LR
REPLACE CLOCKS.	98190021	30,000	LR
REPLACE BATHROOM PARTITIONS THROUGHOUT.	Y00000151	18,000	LR
REPLACE CASEWORK & COUNTER TOPS.	Y01010630	80,000	LR
REPLACE EXTERIOR DOORS AMD FRAMES.	Y01010778	50,000	LR
**School: GLEN BURNIE PK. ELEM			
SAND STAGE	90220034	2,500	2007
REPLACE AIR COOLER CHILLER AND AHU'S.	Y03008753	850,000	2008
REPLACE FIRE ALARM SYSTEM	98189189	175,000	2010
REPLACE WIRING AND BREAKER PANELS.	98189186	96,000	LR
REPLACE CLOCKS.	98189190	18,000	LR
REPLACE BATHROOM PARTITIONS THROUGHOUT.	Y00000152	14,000	LR
REPLACE SEWAGE LIFT STATION	Y01010008	40,000	LR
REPLACE EXTERIOR DOORS AMD FRAMES.	Y01010779	50,000	LR
**School: GLEN BURNIE SENIOR			
REPLACE THE SLIDING BAY DOORS LOCATED IN AUTO SHOP	89311175	20,600	2007
REMOVE ASBESTOS TILE IN BAND ROOM & INSTALL NEW TILE	Y06014014	40,000	2007
REPAIR OR REPLACE SIDEWALKS.	97176019	113,800	2011
PAINT INTERIOR	Y06010961	200,000	2011
SEAL BRICKS ON THE OUTSIDE OF OLD MAIN	89311172	30,900	LR
REPLACE OUTDOOR BLEACHERS	90297153	200,000	LR
RESURFACE DRIVEWAY & PARKING LOT	92288034	1,000,000	LR
REMOVE AND REPLACE ASBESTOS CEILINGS AND LIGHTS- PHASE 1.	95081089	250,000	LR
REMOVE AND REPLACE ASBESTOS CEILINGS AND LIGHTS- PHASE 2.	95081090	250,000	LR
REPLACE/RENOVATE LOCKERS IN B AND C BLDG.	96184008	80,000	LR
REPAINT/REPLACE ALL HALL LOCKERS. A BLDG.	97176028	80,000	LR
REPLACE LOCKERS IN BOYS LOCKERROOM.	97176038	50,000	LR
REPAIR CRACKS IN BRICK WORK IN F BLDG OVER LOCKER ROOMS.	98036087	25,000	LR
REPLACE CLOCKS.	98189180	48,000	LR
REPLACE CEILINGS	98191051	400,000	LR
REPLACE DOORS	98191053	500,000	LR
REPLACE WINDOWS	98191055	1,200,000	LR
RENOVATE STADIUM FIELD.	99026035	75,000	LR
REPLACE BATHROOM PARTITIONS THROUGHOUT.	Y00000195	124,000	LR
REPAIR DOORS ON CABINETS IN ROOM 0103.	Y00001857	40,000	LR
RENOVATE SOFTBALL FIELD.	Y00017057	100,000	LR
REPLACE CASEWORK & COUNTER TOPS.	Y01010669	400,000	LR
RE-COAT ROOF D BUILDING	Y01011250	390,000	LR
REFINISH MAIN GYM (E BUILDING) FLOOR	Y06000739	30,000	LR
UPGRADE SPRINKLER SYSTEM TO CODE	Y06007184	400,000	LR
**School: GLENDALE ELEM.			

**Anne Arundel County Public Schools
Maintenance Division
FIVE-YEAR PLAN MAJOR CONTRACT PROJECTS**

<u>Project Requested</u>	<u>Work Order #</u>	<u>Estimated Cost</u>	<u>Fund Year</u>
ANNEX BUILDING - REPLACE 13 INCREMENTAL UNITS WITH 2 RTU & DUCT WORK	Y06008905	150,000	2007
**School: GREEN STREET OFFICE			
PAINT INTERIOR OF BUILDING.	Y00011073	30,000	2008
PAINT INTERIOR/EXTERIOR.	Y04009776	25,000	2010
REPLACE WOODEN WINDOW FRAMES AND SASH	89312043	500,000	LR
REMOVE AND REPLACE ASBESTOS CEILINGS AND LIGHTS- PHASE 1.	95081097	100,000	LR
**School: HIGH POINT ELEM.			
REPLACE FOLDING DOORS IN CAFETERIA.	Y01009941	50,000	2007
REPLACE SIDEWALK.	98182036	18,000	2010
RESURFACE DRIVEWAY	98089048	45,000	LR
REPLACE FIRE ALARM SYSTEM.	98190040	175,000	LR
REPLACE EMERGENCY LIGHTS.	98190041	30,000	LR
RESAND & VARNISH STAGE PER STEVE WAGNER	99020052	2,500	LR
REPLACE BATHROOM PARTITIONS THROUGHOUT.	Y00000154	44,000	LR
REPLACE CASEWORK & COUNTER TOPS.	Y01010632	50,000	LR
REPLACE EXTERIOR DOORS AMD FRAMES.	Y01010781	50,000	LR
**School: HILLSMERE ELEM.			
IN-HOUSE INSTALLATION OF CARPET AND TILE WITH LIMITED ASBESTOS REMOVAL.	Y02006801	15,000	2007
REMOVE ASBESTOS TILE IN MPR & INSTALL NEW TILE.	Y04009880	80,000	2007
REPAIR SIDEWALK BY UPPER LEVEL HALL WAY EXIT.	97302034	8,000	2011
REPAIR DRIVEWAY & PARKING LOT	92288031	75,000	LR
REMOVE AND REPLACE ASBESTOS CEILINGS AND LIGHTS- PHASE 1.	95081092	250,000	LR
REMOVE AND REPLACE ASBESTOS CEILINGS AND LIGHTS- PHASE 2.	95081093	265,000	LR
REMOVE AND REPLACE ASBESTOS CEILINGS AND LIGHTS- PHASE 3.	95081094	250,000	LR
REPLACE WIRING AND BREAKER PANELS.	98190042	85,000	LR
REPLACE FIRE ALARM SYSTEM	98190054	175,000	LR
REPLACE CLOCKS.	98190056	18,000	LR
REPLACE WINDOWS	98191071	600,000	LR
REPLACE BATHROOM PARTITIONS THROUGHOUT.	Y00000157	26,000	LR
REPLACE CASEWORK & COUNTER TOPS.	Y01010633	150,000	LR
REPLACE EXTERIOR DOORS AMD FRAMES.	Y01010782	50,000	LR
**School: HILLTOP ELEM.			
CEILING AND LIGHTS ASBESTOS ABATEMENT (PHASE 1)	91217014	275,000	2007
REPLACE PA SYSTEM	Y06010036	160,000	2007
REPLACE CARPET AND TILE	Y06014012	50,000	2007
CEILINGS AND LIGHTS ASBESTOS ABATEMENT (PHASE 2)	92197060	250,000	2008
REMOVE AND REPLACE ASBESTOS CEILINGS AND LIGHTS- PHASE 3.	95081065	175,000	2009
REPLACE SIDEWALK, CURB AND GUTTERS.	98182053	11,700	2011
PAINT INTERIOR	Y06010965	40,000	2011
TOTAL OVERLAY OF PATCHED ASPHALT BEHIND BLDG DRIVEWAY.	97142048	250,000	LR

**Anne Arundel County Public Schools
Maintenance Division
FIVE-YEAR PLAN MAJOR CONTRACT PROJECTS**

<u>Project Requested</u>	<u>Work Order #</u>	<u>Estimated Cost</u>	<u>Fund Year</u>
REPLACE EXTERIOR LIGHTING.	97176064	60,000	LR
REPLACE CLOCKS.	98190060	24,000	LR
REPLACE BATHROOM PARTITIONS THROUGHOUT.	Y00000158	28,000	LR
REPLACE CASEWORK & COUNTER TOPS.	Y01010634	50,000	LR
REPLACE EXTERIOR DOORS AMD FRAMES.	Y01010783	50,000	LR
**School: JACOBSVILLE ELEM.			
RE-COAT ROOF	Y06010089	400,000	2007
PAINT INTERIOR	Y01010711	50,000	2008
**School: JESSUP ELEM.			
REPLACE SIDEWALK AND CURB AND GUTTER	95086041	16,800	2009
REPAIR FRONT DRIVE AND SERVICE AREA.	Y01006030	150,000	2010
PAINT INTERIOR	Y06010967	40,000	2011
REPAIR OR REPLACE WINDOWS THROUGHOUT ENTIRE BUILDING.	98120053	600,000	LR
REPLACE WIRING AND BREAKER PANELS.	98190061	180,000	LR
REPLACE BATHROOM PARTITIONS THROUGHOUT.	Y00000147	22,000	LR
REPLACE EXTERIOR DOORS AMD FRAMES.	Y01010784	40,000	LR
**School: JONES ELEM.			
PAINT INTERIOR	Y01010712	45,000	2008
**School: LAKE SHORE ELEM.			
REPLACE ALL PLUMBING FIXTURES.	94101031	150,000	LR
REPLACE SIDEWALK	95086043	11,700	LR
IN-HOUSE INSTALLATION OF CARPET AND TILE WITH LIMITED ASBESTOS REMOVAL.	96190103	12,000	LR
BOILER REPLACEMENT	97192037	250,000	LR
REPLACE WIRING AND BREAKER PANELS.	98190069	150,000	LR
REPLACE INTERIOR LIGHTS AND EMERGENCY LIGHTS.	98190070	180,000	LR
REPLACE CLOCKS.	98190073	18,000	LR
REPLACE PA SYSTEM	99131047	145,000	LR
REPLACE CASEWORK & COUNTER TOPS.	Y01010635	150,000	LR
PAINT INTERIOR OF BUILDING.	Y02007430	30,000	LR
REPLACE CEILING & LIGHTS IN MPR	Y04009326	60,000	LR
REMOVE ASBESTOS TILE IN MPR & INSTALL NEW TILE.	Y04009881	45,000	LR
**School: LINDALE MIDDLE			
REPLACE DRIVEWAY AND PARKING LOT AND TAR & CHIP WALKING PATH.	98089044	250,000	2009
REPLACE SIDEWALK, CURB AND GUTTERS.	98182040	61,200	2009
REPAIR BRICK VENEER AROUND GYM AND AUX GYM.	96218025	400,000	LR
**School: LINTHICUM ELEM.			
REPLACE SIDEWALK	95086044	53,000	2007
SAND AND FINISH STAGE FLOOR	89318289	2,500	LR
REPLACE BATHROOM PARTITIONS THROUGHOUT.	Y00000160	30,000	LR
REPLACE CASEWORK & COUNTER TOPS.	Y01010636	50,000	LR

**Anne Arundel County Public Schools
Maintenance Division
FIVE-YEAR PLAN MAJOR CONTRACT PROJECTS**

<u>Project Requested</u>	<u>Work Order #</u>	<u>Estimated Cost</u>	<u>Fund Year</u>
REPLACE EXTERIOR DOORS AMD FRAMES.	Y01010785	60,000	LR
REPAVE PARKING LOT (ASPHALT)	Y05014529	70,000	LR
**School: LOTHIAN ELEM.			
RE-COAT ROOFS	Y01011256	150,000	2007
REPLACE SIDEWALK.	98182081	24,000	2011
REPLACE FIRE ALARM SYSTEM	98061049	180,000	LR
REPLACE EMERGENCY LIGHTS.	98190082	36,000	LR
REPLACE EXTERIOR LIGHTS.	98190083	85,000	LR
REPLACE BATHROOM PARTITIONS THROUGHOUT.	Y00000161	30,000	LR
REPAIR LOWER PARKING LOT.	Y01006012	80,000	LR
REPLACE CASEWORK & COUNTER TOPS.	Y01010637	80,000	LR
REPLACE EXTERIOR DOORS AMD FRAMES.	Y01010786	50,000	LR
**School: MAC ARTHUR MIDDLE			
PAINT INTERIOR	Y03010067	180,000	2009
REPLACE ALL ROOF TOP UNITS	94186132	250,000	2010
REPLACE CEMENT SLAB IN CENTER BREEZEWAY	95297028	7,000	2010
REPLACE SIDEWALK, CURB AND GUTTERS.	98182045	52,300	2010
RESURFACE DRIVEWAY AND PARKING LOT. PHASE II	Y01001604	250,000	2010
REPAIR DRIVEWAYS AND PARKING LOTS. PHASE 1	Y01005956	400,000	2010
SAND AND REFINISH STAGE FLOOR	89333002	3,500	LR
SAND AND REFINISH FLOORS IN ROOMS 121 AND 122	89333003	8,000	LR
REPLACE EXTERIOR LIGHTS.	98190087	90,000	LR
REPLACE WINDOWS	98191091	2,000,000	LR
REPLACE ALL LOCKERS IN BOYS AND GIRLS LOCKER ROOMS WITH 4 1/2 FOOT LOCKERS.	A99001301	100,000	LR
REPLACE BATHROOM PARTITIONS THROUGHOUT.	Y00000196	112,000	LR
REPLACE INDOOR BLEACHERS	Y01009977	70,000	LR
REPLACE CASEWORK & COUNTER TOPS.	Y01010670	300,000	LR
REPLACE EXTERIOR DOORS AND FRAMES.	Y01010816	250,000	LR
**School: MAGOTHY/SEVERN COMPL			
REPLACE SIDEWALK AND CURB AND GUTTER	95086058	43,500	2009
REPLACE TEACHERS PARKING LOT & RESURFACE FIRE LANE (MAGOTHY MID)	Y02007159	150,000	2009
REPLACE RUNNING TRACK	92294045	50,000	LR
REPLACE WINDOWS	98191124	400,000	LR
REPLACE BATHROOM PARTITIONS THROUGHOUT.	Y00000222	52,000	LR
REPLACE CASEWORK & COUNTER TOPS. - MAGOTHY	Y01010671	250,000	LR
REPLACE CASEWORK & COUNTER TOPS. - SEVERN	Y01010676	250,000	LR
**School: MAINTENANCE DIVISION			
NEW ROOF FOR MAINTENANCE/WAREHOUSE	Y06010091	600,000	2007
REPLACE PVC ROOFS.	Y04010523	425,000	2008
REPAIR DRIVEWAYS AND PARKING LOTS.	Y01006015	450,000	LR

**Anne Arundel County Public Schools
Maintenance Division
FIVE-YEAR PLAN MAJOR CONTRACT PROJECTS**

<u>Project Requested</u>	<u>Work Order #</u>	<u>Estimated Cost</u>	<u>Fund Year</u>
**School: MANOR VIEW ELEM.			
REPLACE FOLDING DOORS IN CAFETERIA.	Y01009944	50,000	2007
REPLACE SIDEWALK, CURB AND GUTTERS.	98182082	9,700	2011
REPLACE FIRE ALARM SYSTEM	98190088	175,000	2011
REPLACE BATHROOM PARTITIONS THROUGHOUT.	Y00000162	28,000	LR
REPLACE CASEWORK & COUNTER TOPS.	Y01010638	50,000	LR
REPLACE EXTERIOR DOORS AMD FRAMES.	Y01010787	60,000	LR
SAND & SEAL STAGE	Y04003850	3,000	LR
**School: MARLEY GLEN SPECIAL			
REPLACE SIDEWALK, CURB AND GUTTERS.	98182041	22,800	2007
REPAIR AND RESURFACE DRIVEWAY	90297184	150,000	2010
REPLACE FOLDING DOORS IN CAFETERIA.	Y01009927	50,000	2010
PATCH AND OVERLAY PARKING LOT AND DRIVEWAY.	98089046	80,000	LR
REPLACE BATHROOM PARTITIONS THROUGHOUT.	Y00000232	32,000	LR
REPLACE EXTERIOR DOORS AND FRAMES.	Y01010808	50,000	LR
**School: MARYLAND CITY ELEM.			
REPLACE STEAM SUPPLY AND CONDENSATE RETURN LINES.	98056060	200,000	2007
IN-HOUSE INSTALLATION OF CARPET AND TILE WITH LIMITED ASBESTOS REMOVAL.	Y02006803	14,000	2008
REMOVE ASBESTOS TILE IN MPR & INSTALL NEW TILE.	Y04009882	45,000	2008
REPLACE EXTERIOR DOORS AND FRAMES.	89311032	40,000	LR
REPLACE SIDEWALK, CURB AND GUTTER	95086045	39,000	LR
REPLACE WIRING AND BREAKER PANELS.	98190112	96,000	LR
REPLACE INTERIOR LIGHTS AND EMERGENCY LIGHTS.	98190114	205,000	LR
REPLACE CLOCKS.	98190117	18,000	LR
REPLACE WINDOWS	98191094	600,000	LR
REPLACE BATHROOM PARTITIONS THROUGHOUT.	Y00000164	18,000	LR
REPLACE PA SYSTEM	Y01003416	145,000	LR
REPLACE CASEWORK & COUNTER TOPS.	Y01010639	150,000	LR
**School: MARYLAND HALL			
REPLACE SIDEWALK.	98182047	130,000	2007
RESURFACE DRIVE AND PARKING LOT	98089059	200,000	LR
REPLACE THIRTY THREE TOILET PARTITIONS.	99145090	30,000	LR
**School: MEADE HEIGHTS ELEM.			
REPLACE METAL ROOF AND CLEARSTORIES	Y03010530	625,000	2008
REPLACE CONCRETE SIDEWALK AND CURB AND GUTTER	Y05007471	4,500	2011
REPAIR ASPHALT DRIVEWAY	Y02007163	300,000	LR
REPLACE 255 TON AIR COOLED CHILLER	Y03008759	750,000	LR
**School: MEADE MIDDLE			
PAINT INTERIOR	Y01010713	180,000	2007
**School: MEADE SENIOR			

**Anne Arundel County Public Schools
Maintenance Division
FIVE-YEAR PLAN MAJOR CONTRACT PROJECTS**

<u>Project Requested</u>	<u>Work Order #</u>	<u>Estimated Cost</u>	<u>Fund Year</u>
REPLACE INDOOR BLEACHERS.	99098018	300,000	2007
NEED AUXILLARY GYM FLOOR REFINISHED.	Y01001917	8,000	2007
REPLACE STADIUM LIGHTING	Y06004978	800,000	2007
REPLACE ROOF	Y00006390	2,500,000	2008
RE-TREAT RUNNING TRACK.	Y00017067	100,000	2008
REPLACE OUTDOOR BLEACHERS	90297152	150,000	LR
REPAVE/REPAIR DRIVEWAY, PARKING LOT AND WALK.	98156021	800,000	LR
REPLACE CLOCKS.	98190118	48,000	LR
REPLACE WINDOWS	98191095	500,000	LR
REPLACE LOCKERS	98191096	300,000	LR
RENOVATE STADIUM FIELD.	99026036	60,000	LR
REPLACE BATHROOM PARTITIONS THROUGHOUT.	Y00000211	36,000	LR
INSPECTION AND TEST OF M.C.C. BUS DUCT	Y00002094	15,000	LR
REPLACE EXTERIOR DOORS AND FRAMES.	Y01010817	150,000	LR
REPLACE LIGHTS IN GYM WITH MERCURY VAPOR LIGHTS	Y03013190	24,000	LR
REPLACE 8 FLOURESCENT LIGHTS IN GYM AREA, WITH MERCURY VAPOR LIGHTING	Y03013230	40,000	LR
**School: MILLERSVILLE ELEM.			
UPGRADE ELECTRICAL SYSTEM	Y01003417	550,000	2008
REPLACE WELL SYSTEM	Y06010015	500,000	2008
REMOVE ASBESTOS TILE IN MPR & INSTALL NEW TILE.	Y04009883	45,000	2009
REPLACE WIRING AND BREAKER PANELS	98190119	85,000	LR
REPLACE INTERIOR LIGHTS AND EMERGENCY LIGHTS.	98190122	205,000	LR
REPLACE CLOCKS.	98190125	18,000	LR
REPLACE WINDOWS	98191097	600,000	LR
REPLACE BATHROOM PARTITIONS THROUGHOUT.	Y00000166	26,000	LR
REPLACE CASEWORK & COUNTER TOPS.	Y01010640	150,000	LR
REPLACE EXTERIOR DOORS AMD FRAMES.	Y01010788	50,000	LR
REPLACE STEAM & CONDITION LINES	Y06007181	650,000	LR
**School: NORTH COUNTY SR.			
BOILER REPLACEMENT	97192074	400,000	2007
REPLACE FOLDING DOORS W/GYM CURTAIN.	Y01009925	20,000	2007
RENOVATE PRATICE FIELDS	Y06010926	600,000	2007
REPLACE SIDEWALK AND CURB AND GUTTER	95086060	76,300	2008
RE-TREAT RUNNING TRACK.	Y00017071	100,000	2009
RENOVATE JV FOOTBALL FIELD	97153067	200,000	LR
RENOVATE STADIUM FIELD.	99026037	100,000	LR
RENOVATE SOFTBALL FIELD.	Y00017069	100,000	LR
RENOVATE J.V. BASEBALL FIELD.	Y00017070	100,000	LR
**School: NORTH GLEN ELEM.			
REMOVE ASBESTOS TILE IN MPR & INSTALL NEW TILE.	Y04009884	45,000	2007

**Anne Arundel County Public Schools
Maintenance Division
FIVE-YEAR PLAN MAJOR CONTRACT PROJECTS**

<u>Project Requested</u>	<u>Work Order #</u>	<u>Estimated Cost</u>	<u>Fund Year</u>
REPLACE COMPLETE ELECTRIC	Y06009888	550,000	2008
NEED STAGE SANDED AND SEALED.	97226017	2,500	LR
REPAIR DRIVEWAY AND PARKING LOT	98089042	200,000	LR
REPLACE BATHROOM PARTITIONS THROUGHOUT.	Y00000167	14,000	LR
REPLACE CASEWORK & COUNTER TOPS.	Y01010641	150,000	LR
REPLACE EXTERIOR DOORS AND FRAMES.	Y01010789	50,000	LR
REPLACE WINDOWS	Y03007149	600,000	LR
**School: NORTHEAST SENIOR			
IN-HOUSE INSTALLATION OF CARPET AND TILE WITH LIMITED ASBESTOS REMOVAL.	96191067	52,700	2007
REPAVE STUDENT AND FACULTY PARKING LOTS AND DRIVEWAY.	94074076	600,000	2008
REPLACE SIDEWALK AND CURB AND GUTTER	95086061	101,200	2008
RE-TREAT RUNNING TRACK.	Y00017075	100,000	2008
PAINT INTERIOR	Y03010069	250,000	2009
REPLACE OUTDOOR BLEACHERS	90297143	150,000	LR
SAND FLOOR IN THE DRAFTING AND THE WOOD SHOP.	92252051	8,000	LR
REPLACE DISTRIBUTION CENTER, BREAKER PANELS.	98190126	300,000	LR
REPLACE EXTERIOR LIGHTS.	98190127	90,000	LR
REPLACE FIRE ALARM SYSTEM.	98190128	245,000	LR
REPLACE CLOCKS.	98190129	36,000	LR
REPLACE LOCKERS	98191098	300,000	LR
RENOVATE STADIUM FIELD.	99026038	75,000	LR
REPLACE INDOOR BLEACHERS.	99098020	150,000	LR
REPLACE BATHROOM PARTITIONS THROUGHOUT.	Y00000212	72,000	LR
RENOVATE SOFTBALL FIELD.	Y00017072	100,000	LR
REPLACE CASEWORK & COUNTER TOPS.	Y01010672	300,000	LR
REPLACE EXTERIOR DOORS AND FRAMES.	Y01010818	250,000	LR
REPLACE EXISTING AHU IN CRAWL SPACE AND ALL CLASSROOM UNITS	Y06006405	2,500,000	LR
**School: OAK HILL ELEM.			
REPLACE MULTI-PURPOSE ROOM CEILINGS AND FLOORS.	Y03008743	90,000	2007
REMOVE AND REPLACE ASBESTOS CEILINGS AND LIGHTS- PHASE 1.	95081085	230,000	2008
REPAIR FOLDING DOORS IN CAFETERIA.	Y01009947	50,000	2008
REMOVE AND REPLACE ASBESTOS CEILINGS AND LIGHTS- PHASE 2.	95081087	250,000	2009
REMOVE AND REPLACE ASBESTOS CEILINGS AND LIGHTS- PHASE 3.	95081088	190,000	2010
PAINT INTERIOR/EXTERIOR.	Y04009778	40,000	2010
SAND AND REVARNISH STAGE	91122030	2,500	LR
REPLACE FIRE ALARM SYSTEM	98190139	175,000	LR
REPLACE CLOCKS.	98190141	18,000	LR
REPLACE CASEWORK & COUNTER TOPS.	Y01010642	50,000	LR
REPLACE EXTERIOR DOORS AND FRAMES.	Y01010790	60,000	LR
**School: OAKWOOD ELEM.			

Anne Arundel County Public Schools
Maintenance Division
FIVE-YEAR PLAN MAJOR CONTRACT PROJECTS

<u>Project Requested</u>	<u>Work Order #</u>	<u>Estimated Cost</u>	<u>Fund Year</u>
REPLACE 1 CHILLER	94186119	2,000,000	2008
REPLACE SIDEWALK, CURB AND GUTTERS.	98182075	17,500	2008
RESURFACE ASPHALT WALKWAY AND PLAY AREA	97280041	50,000	LR
REPLACE CLOCKS.	98190146	18,000	LR
REPLACE FIRE ALARM SYSTEM	99090013	175,000	LR
REPLACE BATHROOM PARTITIONS THROUGHOUT.	Y00000171	14,000	LR
REPLACE CASEWORK & COUNTER TOPS.	Y01010643	80,000	LR
REPLACE EXTERIOR DOORS AND FRAMES.	Y01010791	50,000	LR
SAND STAGE FLOOR.	Y02007413	2,500	LR
REPLACE PA SYSTEM	Y06007296	145,000	LR
**School: ODENTON ELEM.			
REPLACE SIDEWALK, CURB AND GUTTERS.	98182039	9,200	2010
PAINT INTERIOR/EXTERIOR.	Y04009779	45,000	2010
REPLACE 1 CHILLER AND TOWER	94186099	1,300,000	LR
RESURFACE/REPLACE FRONT DRIVEWAY & WALK	Y02007150	200,000	LR
**School: OLD MILL COMPLEX			
REPLACE FOLDING DOOR IN AUDITORIUM - HIGH SCHOOL	Y03007044	150,000	2007
REPLACE SIDEWALK, CURB AND GUTTER	95086062	145,700	2009
PAINT INTERIOR - HIGH SCHOOL	Y03010071	150,000	2009
PAINT INTERIOR (NORTH SCHOOL)	Y03010072	80,000	2009
PAINT INTERIOR - SOUTH SCHOOL	Y03010073	80,000	2009
NEED LOADING DOCK CONCRETE REPAIRED OR REPLACED.	95072028	48,000	2010
REMOVE CONCRETE RAMPS AT MAIN ENTRANCE TO WATER PROOF LEAKING WALL.	98042082	110,000	2010
PROVIDE AND INSTALL NEW LOCKER DOORS	89310068	300,000	LR
REPLACE OUTDOOR BLEACHERS	90297146	200,000	LR
REPLACE DOORS IN HIGH SCHOOL	98191101	80,000	LR
REPLACE WINDOWS IN HIGH SCHOOL	98191102	400,000	LR
REPLACE DOORS (NORTH SCHOOL)	98191104	130,000	LR
REPLACE WINDOWS (NORTH SCHOOL)	98191105	300,000	LR
REPLACE DOORS (SOUTH SCHOOL)	98191108	130,000	LR
REPLACE WINDOWS (SOUTH SCHOOL)	98191109	300,000	LR
REPLACE BATHROOM PARTITIONS. NORTH	Y00000213	60,000	LR
REPLACE BATHROOM PARTITIONS. SOUTH	Y00000217	60,000	LR
REPLACE BATHROOM PARTITIONS. SENIOR	Y00000219	94,000	LR
REPAIR BUS LOT AND TEACHERS PARKING LOT. PHASE 3.	Y01006013	250,000	LR
REPLACE CASEWORK & COUNTER TOPS. - SENIOR	Y01010673	300,000	LR
REPLACE CASEWORK & COUNTER TOPS. - NORTH	Y01010674	250,000	LR
REPLACE CASEWORK & COUNTER TOPS. - SOUTH	Y01010675	250,000	LR
REPLACE EXTERIOR LIGHTS.	Y02007575	180,000	LR
SOUTH - SAND AND REFINISH MINI GYM FLOOR, ROOM B120	Y05011554	5,000	LR

Anne Arundel County Public Schools
Maintenance Division
FIVE-YEAR PLAN MAJOR CONTRACT PROJECTS

<u>Project Requested</u>	<u>Work Order #</u>	<u>Estimated Cost</u>	<u>Fund Year</u>
REPLACE AUDITORIUM SEATING	Y06011138	250,000	LR
**School: OVERLOOK ELEM.			
SAND AND FINISH STAGE FLOOR	89318294	2,100	2007
PAINT INTERIOR/EXTERIOR.	Y04009780	35,000	2010
REPLACE CURB, GUTTER AND SIDEWALK	95086048	14,300	LR
REPLACE ALL PLUMBING FIXTURES AND STALLS.	98187021	150,000	LR
REPLACE WIRING AND BREAKER PANELS	98190147	85,000	LR
REPLACE FIRE ALARM SYSTEM.	98190150	175,000	LR
REPLACE BATHROOM PARTITIONS THROUGHOUT.	Y00000172	20,000	LR
REPLACE CASEWORK & COUNTER TOPS.	Y01010644	150,000	LR
REPLACE EXTERIOR DOORS AND FRAMES.	Y01010792	50,000	LR
RE-COAT ROOFS	Y01011253	55,000	LR
REMOVE ASBESTOS TILE IN MPR & INSTALL NEW TILE.	Y04009885	45,000	LR
REPLACE STEAM AND CONDITION LINES	Y06007190	650,000	LR
**School: PARHAM BUILDING			
BOILER REPLACEMENT	97192084	450,000	2007
PAINT INTERIOR OF BUILDING.	Y00011078	70,000	2008
REPLACE SIDEWALK, CURB AND GUTTERS.	98182069	3,700	2011
REPLACE FIRE ALARM.	Y00010034	175,000	LR
**School: PARK ELEM.			
REPLACE METAL ROOF AND CLEARSTORIES	Y03010529	625,000	2008
REPLACE FOLDING DOORS IN CAFETERIA.	Y01009949	50,000	2011
REPLACE AIR COOLED CHILLER.	Y03008755	750,000	LR
**School: PAROLE ELEM.			
REPLACE CARPET AND TILE	Y02006809	70,000	2008
ROOF REPLACEMENT	Y03002081	565,000	2009
REPLACE FOLDING DOOR IN CAFE	Y03007042	50,000	2010
REPLACE SIDEWALK.	98182086	7,000	2011
REPLACE ICE STORAGE W/CHILLER AND PUMPS.	Y03008754	850,000	2011
**School: PERSHING HILL ELEM.			
REPLACE SIDEWALK, CURB AND GUTTER AND DOUBLE DUMPSTER PAD	95086051	12,800	2010
RESURFACE PLAY AREA	98089054	55,000	LR
REPLACE EXTERIOR LIGHTS.	98190161	60,000	LR
REPLACE EMERGENCY LIGHTS.	98190162	36,000	LR
REPLACE CLOCKS	98190163	24,000	LR
REPLACE BATHROOM PARTITIONS THROUGHOUT.	Y00000174	28,000	LR
REPLACE CASEWORK & COUNTER TOPS.	Y01010645	150,000	LR
REPLACE EXTERIOR DOORS AND FRAMES.	Y01010793	50,000	LR
REPLACE WINDOWS	Y03007150	900,000	LR
**School: PHOENIX ANNAPOLIS			
PAINT INTERIOR	Y03010075	25,000	2009

**Anne Arundel County Public Schools
Maintenance Division
FIVE-YEAR PLAN MAJOR CONTRACT PROJECTS**

<u>Project Requested</u>	<u>Work Order #</u>	<u>Estimated Cost</u>	<u>Fund Year</u>
REPAIR BOILER ROOM WALLS	97085040	50,000	LR
REPLACE INTERIOR LIGHTS AND EMERGENCY LIGHTS.	98190166	250,000	LR
REPLACE CLOCKS.	98190169	18,000	LR
REPLACE CEILINGS	98191112	250,000	LR
REPLACE DOORS	98191113	100,000	LR
REPLACE ASPHALT BY DUMPSTER. CONCRETE AND INSTALL DRAIN.	99258063	75,000	LR
REPLACE BATHROOM PARTITIONS THROUGHOUT.	Y00000233	24,000	LR
REPLACE EXTERIOR LIGHTING.	Y00010055	36,000	LR
REPLACE PA SYSTEM	Y01003401	145,000	LR
**School: PINEY ORCHARD ELEM.			
PAINT INTERIOR	Y03010076	35,000	2009
**School: PT. PLEASANT I ELEM.			
IN-HOUSE INSTALLATION OF CARPET AND TILE WITH LIMITED ASBESTOS REMOVAL.	97174028	12,000	2007
REMOVE ASBESTOS TILE IN MPR & INSTALL NEW TILE.	Y04009870	45,000	2008
REPLACE PA SYSTEM	99131048	180,000	2010
REPLACE SIDEWALK.	98182059	12,200	2011
PAINT INTERIOR/EXTERIOR.	Y04009781	35,000	2011
CEILING REPLACEMENT REQUIRED.	96242117	200,000	LR
REPLACE PARKING LOT AND DRIVEWAY	98089041	80,000	LR
REPLACE INTERIOR LIGHTS AND EMERGENCY LIGHTS.	98190174	240,000	LR
REPLACE EXTERIOR LIGHTS.	98190175	75,000	LR
REPLACE CLOCKS.	98190178	30,000	LR
REPLACE WINDOWS	98191114	800,000	LR
REPLACE SEWAGE LIFT STATION	Y01010003	60,000	LR
REPLACE CASEWORK & COUNTER TOPS.	Y01010646	80,000	LR
REPLACE EXTERIOR DOORS AND FRAMES.	Y01010794	50,000	LR
**School: PT. PLEASANT II ELEM			
REPLACE SIDEWALK, CURB AND GUTTER	95086052	46,000	2008
REPAIR DRIVEWAY AND PARKING LOT.	Y01006014	250,000	2009
SAND STAGE FLOOR	93026007	2,500	LR
REPLACE EXTERIOR LIGHTS.	98190182	50,000	LR
REPLACE EMERGENCY LIGHTS.	98190183	36,000	LR
REPLACE WINDOWS	98191115	400,000	LR
REPLACE BATHROOM PARTITIONS THROUGHOUT.	Y00000175	26,000	LR
REPLACE EXTERIOR DOORS AND FRAMES.	Y01010795	70,000	LR
**School: QUARTERFIELD ELEM.			
REPLACE SIDEWALK, CURB AND GUTTERS.	98182063	25,000	2008
REPLACE COMPLETE ELECTRIC	Y06009890	450,000	2008
REMOVE ASBESTOS TILE IN MPR & INSTALL NEW TILE.	Y04009886	45,000	2009
REPLACE WINDOWS	98191116	600,000	LR

**Anne Arundel County Public Schools
Maintenance Division
FIVE-YEAR PLAN MAJOR CONTRACT PROJECTS**

<u>Project Requested</u>	<u>Work Order #</u>	<u>Estimated Cost</u>	<u>Fund Year</u>
REPLACE BATHROOM PARTITIONS THROUGHOUT.	Y00000176	26,000	LR
REPAIR DRIVEWAY.	Y01006033	150,000	LR
REPLACE CASEWORK & COUNTER TOPS.	Y01010647	150,000	LR
REPLACE EXTERIOR DOORS AND FRAMES.	Y01010796	50,000	LR
**School: R.H. LEE ELEM.			
REPLACE ALL RTU'S	Y05005998	1,004,000	2007
REPLACE CARPET & TILE	Y06014011	50,000	2007
REPLACE SIDEWALK.	98182077	7,400	2011
REPLACE WIRING AND BREAKER PANELS.	98190190	145,000	LR
REPLACE INTERIOR LIGHTS.	98190191	90,000	LR
REPLACE FIRE ALARM SYSTEM	98190192	175,000	LR
REPLACE BATHROOM PARTITIONS THROUGHOUT.	Y00000177	32,000	LR
REPAIR PLAY AREA AND WALK.	Y01006866	25,000	LR
REPLACE CASEWORK & COUNTER TOPS.	Y01010648	50,000	LR
**School: RIDGEWAY ELEM.			
PAINT INTERIOR OF BUILDING.	Y02007426	50,000	2007
**School: RIPPLING WOODS ELEM.			
REPLACE HEATER/CHILLER, TOWER AND PUMPS.	Y03008756	800,000	2007
REPLACE CARPET AND TILE WITH LIMITED ASBESTOS REMOVAL.	Y04010433	100,000	2007
REPLACE FOLDING DOORS IN CAFETERIA.	Y01009950	50,000	2010
REPLACE SIDEWALK.	98182066	19,500	2011
NEW WINDOWS IN KITCHEN	94073047	25,000	LR
REPLACE FIRE ALARM SYSTEM	98190194	175,000	LR
REPLACE BATHROOM PARTITIONS THROUGHOUT.	Y00000179	34,000	LR
REPLACE CASEWORK & COUNTER TOPS.	Y01010649	50,000	LR
REPLACE EXTERIOR DOORS AND FRAMES.	Y01010797	50,000	LR
**School: RIVIERA BEACH ELEM.			
SAND AND FINISH STAGE FLOOR	89318292	2,500	2007
REPLACE SIDEWALK.	98182071	8,900	2011
PAINT INTERIOR/EXTERIOR.	Y04009782	40,000	2011
REPLACE DROP CEILING IN HALLWAY OF OLD BLDG. BY GYM.	89311271	30,900	LR
REPAIR DRIVEWAY	92288035	50,000	LR
REPLACE EMERGENCY LIGHTS.	98190198	36,000	LR
REPLACE CLOCKS.	98190199	24,000	LR
REPLACE WINDOWS	98191118	400,000	LR
REPAIR LOOSE BRICKS ON CHIMNEY	Y00013785	25,000	LR
REPLACE EXTERIOR DOORS AND FRAMES.	Y01010798	50,000	LR
**School: ROLLING KNOLLS ELEM.			
PAINT INTERIOR	Y03010077	30,000	2009
REMOVE ASBESTOS TILE IN MPR & INSTALL NEW TILE.	Y04009887	45,000	2009
REPLACE SIDEWALK.	98182046	13,300	2011

**Anne Arundel County Public Schools
Maintenance Division
FIVE-YEAR PLAN MAJOR CONTRACT PROJECTS**

<u>Project Requested</u>	<u>Work Order #</u>	<u>Estimated Cost</u>	<u>Fund Year</u>
REPAIR OF THE CHIMNEY AND THE LIGHTING PROTECTOR.	96255043	35,000	LR
RESURFACE DRIVEWAY AND SERVICE AREA	98089060	150,000	LR
REPLACE WIRING AND BREAKER PANELS.	98190200	85,000	LR
REPLACE EMERGENCY LIGHTS.	98190204	20,000	LR
REPLACE CLOCKS	98190205	18,000	LR
REPLACE WINDOWS	98191120	600,000	LR
REPLACE BATHROOM PARTITIONS THROUGHOUT.	Y00000181	20,000	LR
REPLACE CASEWORK & COUNTER TOPS.	Y01010650	150,000	LR
REPLACE EXTERIOR DOORS AND FRAMES.	Y01010799	50,000	LR
**School: RUTH PARKER EASON			
REPLACE FOLDING DOORS IN CAFETERIA.	Y01009957	50,000	2010
REPLACE CONCRETE SIDEWALK AND CURB AND GUTTER	Y05007473	4,000	2011
REPLACE BATHROOM PARTITIONS THROUGHOUT.	Y00000235	32,000	LR
**School: SEVERN ELEM.			
REPLACE CARPET AND TILE	Y02006815	105,000	2007
REPLACE FIRE ALARM.	Y00010037	185,000	2008
RESURFACE PLAY AREA	98089053	24,000	LR
**School: SEVERNA PARK ELEM.			
REPLACE CARPET AND TILE	Y02006816	66,000	2007
REPLACE 1 CHILLER AND TOWER	94186107	2,000,000	2008
REPLACE ROOF	Y00006389	700,000	2008
REPLACE FOLDING DOORS IN CAFETERIA.	Y01009951	50,000	2011
NEED STAGE FLOOR REPLACED.	94244038	10,000	LR
REPLACE PLUMBING FIXTURES IN THE BATHROOMS OLD SECTION.	95202056	50,000	LR
REPLACE BATHROOM PARTITIONS THROUGHOUT.	Y00000182	28,000	LR
**School: SEVERNA PARK MIDDLE			
REPLACE SIDEWALK, CURB, & GUTTER.	Y03007787	50,200	2009
REPLACE STAGE LIGHTING AND DIMMER BOARD	94096028	45,000	LR
REPLACE WIRING AND BREAKER PANELS.	98190207	240,000	LR
REPLACE INTERIOR LIGHTS AND EMERGENCY LIGHTS.	98190208	520,000	LR
REPLACE WINDOWS	98191121	1,200,000	LR
REPLACE BATHROOM PARTITIONS THROUGHOUT.	Y00000220	94,000	LR
NEED WOODEN FLOORS IN SHOP 3,4, AND 5 SANDED DOWN AND REFINISHED.	Y00008966	12,000	LR
REPLACE INDOOR BLEACHERS	Y01009981	80,000	LR
REPLACE CASEWORK & COUNTER TOPS.	Y01010677	250,000	LR
REPLACE EXTERIOR DOORS AND FRAMES.	Y01010819	300,000	LR
**School: SEVERNA PARK SENIOR			
REPLACE INDOOR BLEACHERS.	99098022	300,000	2007
REPLACE OUTDOOR BLEACHERS.	99098028	600,000	2007
REPLACE ALL CLASS ROOM AIR CONDITIONER UNITS AND EIGHT AHU IN MEDIA MEETING ROOM	Y06008901	1,200,000	2007

**Anne Arundel County Public Schools
Maintenance Division
FIVE-YEAR PLAN MAJOR CONTRACT PROJECTS**

<u>Project Requested</u>	<u>Work Order #</u>	<u>Estimated Cost</u>	<u>Fund Year</u>
ENTIRE BUILDING - REPLACE OLD PLEXIGLASS WINDOWS AND REPAIR GLAZING	Y06009906	50,000	2007
REPLACE HALLWAY LIGHTING	Y06009993	250,000	2007
RESURFACE PARKING LOTS. PHASE I	90267056	400,000	2008
REPLACE SIDEWALK, CURB AND GUTTERS.	98182042	69,300	2008
PHASE II REPAIR PARKING LOTS & DRIVE WAY	Y01006862	400,000	2008
REPLACE CEILING TILE IN D HALL CLASSROOMS FIRST FLOOR	93182052	41,200	LR
REPLACE 4 SETS OF 2 EXIT DOORS FROM THE MAIN GYM.	95173064	25,000	LR
REFINISH/REPLACE THE FRONTS OF ALL CLASSROOM BATES UNITS.	95173066	51,500	LR
REPLACE INTERIOR LIGHTS AND EMERGENCY LIGHTS.	98190212	570,000	LR
REPLACE CLOCKS.	98190214	60,000	LR
REPLACE WINDOWS	98191123	1,200,000	LR
RENOVATE STADIUM FIELD.	99026039	75,000	LR
REPLACE BATHROOM PARTITIONS THROUGHOUT.	Y00000197	90,000	LR
REFINISH STAGE FLOOR.	Y00006261	8,000	LR
REPLACE FIRE ALARM.	Y00010038	320,000	LR
REPLACE PLUMBING FIXTURES	Y06007191	500,000	LR
**School: SHADY SIDE ELEM.			
REPLACE MULTI-PURPOSE ROOM CEILINGS AND FLOORS.	Y03008746	90,000	2007
REPLACE FOLDING DOORS IN CAFETERIA.	Y01009952	50,000	2009
REPLACE SIDEWALK, CURB AND GUTTER	95086054	8,700	2010
PHASE 1 REMOVE AND REPLACE ASBESTOS CEILING SYSTEMS AND LIGHT.	Y02000353	250,000	2010
PHASE 2 REMOVE AND REPLACE ASBESTOS CEILING SYSTEMS AND LIGHTS.	Y02000354	250,000	2011
PHASE 3 REMOVE AND REPLACE ASBESTOS CEILING SYSTEMS AND LIGHT FIXTURES.	Y02000355	265,000	2012
SAND AND FINISH STAGE FLOOR	95173063	2,500	LR
REPAIR DRIVEWAY, RESURFACE PARKING LOT AND PLAYGROUND AREA	98089040	200,000	LR
REPLACE FIRE ALARM SYSTEM	98190215	175,000	LR
REPLACE BATHROOM PARTITIONS THROUGHOUT.	Y00000183	38,000	LR
REPLACE EXTERIOR LIGHTING.	Y00010048	50,000	LR
REPLACE CASEWORK & COUNTER TOPS.	Y01010651	50,000	LR
REPLACE EXTERIOR DOORS AND FRAMES.	Y01010800	60,000	LR
**School: SHIPLEYS CHOICE ELEM			
PAINT INTERIOR	Y03010078	35,000	2009
REPLACE SIDEWALK.	98182078	18,500	2010
REPAIR PARKING LOTS.	Y01006035	45,000	LR
REPLACE LOCKERS ON WALL IN ROOM 075 & 078 WITH METAL LOCKERS,	Y01016014	50,000	LR
REPLACE CHILLER, TOWER AND PUMPS.	Y03008757	750,000	LR
**School: SOLLEY ELEM.			
REPAIR BUS TURN AROUND.	Y01006016	100,000	2007
REPLACE METAL ROOF	Y02010752	625,000	2008

**Anne Arundel County Public Schools
Maintenance Division
FIVE-YEAR PLAN MAJOR CONTRACT PROJECTS**

<u>Project Requested</u>	<u>Work Order #</u>	<u>Estimated Cost</u>	<u>Fund Year</u>
REPLACE SIDEWALK, CURB, & GUTTER.	Y03007786	8,000	LR
REPLACE CARPET AND TILE WITH LIMITED ASBESTOS REMOVAL.	Y04010434	100,000	LR
**School: SOUTH RIVER SENIOR			
REPLACE CONCRETE SIDEWALKS AND CURB AND GUTTER PHASE II	Y05005258	104,500	2007
RE-TREAT RUNNING TRACK.	Y00017080	100,000	2009
REPLACE FOLDING PARTITIONS THROUGHOUT BLDG.	90282033	100,000	LR
REPLACE LIGHT SYSTEMS IN AUDITORIUM	91303011	15,000	LR
REPLACE LOCKER BANKS WITH NEW LOCKERS	91303012	250,000	LR
REPLACE TEAM ROOM LOCKERS WITH PROPER QUALITY LOCKERS.	97226016	25,000	LR
REPLACE OUTDOOR BLEACHERS.	99098029	200,000	LR
REPLACE BATHROOM PARTITIONS THROUGHOUT.	Y00000223	56,000	LR
REPLACE CASEWORK & COUNTER TOPS.	Y01010679	300,000	LR
REPLACE EXTERIOR DOORS AND FRAMES.	Y01010820	300,000	LR
**School: SOUTHERN MIDDLE			
REPLACE PA SYSTEM	Y01003413	400,000	2007
RE-COAT GYM ROOF	Y01011258	35,000	2007
REPLACE SIDEWALK	95086063	62,200	2008
REPLACE WELL SYSTEM	Y06010014	500,000	2008
PAINT INTERIOR	Y03010079	150,000	2009
REPLACE BATHROOM PARTITIONS THROUGHOUT.	Y00000224	52,000	LR
REPLACE FIRE ALARM.	Y00010042	245,000	LR
**School: SOUTHERN SENIOR			
REPLACE INDOOR BLEACHERS.	99098023	300,000	2007
REMOVE ASBESTOS CEILING AND REPLACE SYSTEMS AND LIGHTS (PHASE 13)	Y02009788	275,000	2007
RETREAT RUNNING TRACK	Y03007070	100,000	2007
REPLACE CHILLER TOWER, AHU, RTU	Y03008758	4,200,000	2007
PAINT INTERIOR/EXTERIOR.	Y04009783	180,000	2011
REPLACE GREENHOUSE GLASS AND PLEXIGLASS	89310160	40,000	LR
RENOVATE OR REPLACE STUDENT LOCKERS IN HALL	89311077	113,300	LR
STAGE AREA OF AUDITORIUM NEEDS NEW LIGHT FIXTURES.	90289039	20,000	LR
REPLACE TABLE TOPS IN ART AND SCIENCE CLASSROOMS	90289044	75,000	LR
REPLACE OUTDOOR BLEACHERS	90297142	150,000	LR
RENOVATE SOCCER FIELD	97153066	100,000	LR
REPLACE EXTERIOR LIGHTS.	98190225	90,000	LR
RENOVATE STADIUM FIELD.	99026041	75,000	LR
REPLACE BATHROOM PARTITIONS THROUGHOUT.	Y00000225	72,000	LR
RENOVATE SOFTBALL FIELD.	Y00017082	100,000	LR
REPLACE EXTERIOR DOORS AND FRAMES.	Y01010821	250,000	LR
REPLACE WINDOWS	Y03007151	700,000	LR
AUDITORIUM STAGE NEEDS TO BE SANDED TO BE REFINISHED	Y05006623	5,000	LR

**Anne Arundel County Public Schools
Maintenance Division
FIVE-YEAR PLAN MAJOR CONTRACT PROJECTS**

<u>Project Requested</u>	<u>Work Order #</u>	<u>Estimated Cost</u>	<u>Fund Year</u>
**School: SOUTHGATE ELEM.			
PAINT INTERIOR	Y01010753	50,000	2007
REPLACE WIRING AND BREAKER PANELS.	98190218	85,000	LR
REPLACE EMERGENCY LIGHTS.	98190220	25,000	LR
REPLACE WINDOWS	98191125	600,000	LR
REPLACE BATHROOM PARTITIONS THROUGHOUT.	Y00000184	26,000	LR
REPLACE CASEWORK & COUNTER TOPS.	Y01010652	80,000	LR
REPLACE EXTERIOR DOORS AND FRAMES.	Y01010801	50,000	LR
**School: STAFF DEVELOPMENT			
REMOVE AND REPLACE ASBESTOS CEILINGS AND LIGHTS- PHASE 1.	95081095	200,000	LR
REMOVE AND REPLACE ASBESTOS CEILINGS AND LIGHTS- PHASE 2.	95081096	225,000	LR
**School: STUDENT SERVICE CTR.			
REPAIR, RESURFACE DRIVEWAY AND PARKING LOT	89279044	97,000	2011
REPLACE SIDEWALK, CURB AND GUTTERS.	98182070	8,500	2011
PAINT INTERIOR/EXTERIOR.	Y04009784	20,000	2011
**School: SUNSET ELEM.			
REPLACE FOLDING DOORS IN CAFETERIA.	Y01009953	50,000	2007
REMOVE AND REPLACE ASBESTOS CEILINGS AND LIGHTS- PHASE 1.	95081082	230,000	2011
REPLACE SIDEWALK, CURB AND GUTTERS.	98182052	13,200	2011
REMOVE AND REPLACE ASBESTOS CEILINGS AND LIGHTS- PHASE 2.	95081083	250,000	2012
REMOVE AND REPLACE ASBESTOS CEILINGS AND LIGHTS- PHASE 3.	95081084	190,000	LR
REPLACE FIRE ALARM SYSTEM	98190227	175,000	LR
REPLACE PA SYSTEM	99131051	145,000	LR
REPLACE BATHROOM PARTITIONS THROUGHOUT.	Y00000185	34,000	LR
NEED STAGE FLOOR SANDED. AFTER JUNE 2001.	Y00015825	2,500	LR
REPAIR DRIVEWAY TO FORTSMALLWOOD ROAD.	Y01006018	50,000	LR
REPLACE CASEWORK & COUNTER TOPS.	Y01010653	50,000	LR
REPLACE EXTERIOR DOORS AND FRAMES.	Y01010802	60,000	LR
INSTALL EMERGENCY LIGHTS IN MAIN HALL, CAFETERIA, GYM, AND MEDIA CENTER	Y05000510	20,000	LR
**School: TRANS. GARAGE			
PAINT INTERIOR	Y01010690	20,000	LR
**School: TYLER HEIGHTS ELEM.			
REPLACE FIRE ALARM SYSTEM	98190242	120,000	2007
REMOVE ASBESTOS FLOORS PHASE 1	Y04009888	150,000	2007
REPLACE WIRING AND BREAKER PANELS.	98190235	85,000	LR
REPLACE EMERGENCY LIGHTS.	98190243	25,000	LR
REPLACE CLOCKS.	98190244	18,000	LR
REPLACE BATHROOM PARTITIONS THROUGHOUT.	Y00000187	14,000	LR
REPLACE CASEWORK & COUNTER TOPS.	Y01010655	150,000	LR
REPLACE EXTERIOR DOORS AND FRAMES.	Y01010804	50,000	LR

**Anne Arundel County Public Schools
Maintenance Division
FIVE-YEAR PLAN MAJOR CONTRACT PROJECTS**

<u>Project Requested</u>	<u>Work Order #</u>	<u>Estimated Cost</u>	<u>Fund Year</u>
REPLACE WINDOWS	Y03007154	600,000	LR
**School: VAN BOKKELEN ELEM.			
PAINT INTERIOR OF BUILDING.	Y02007429	50,000	2007
REPLACE HOT WATER CHILLER	Y06002274	800,000	2007
REPLACE SIDEWALK AND CURB AND GUTTER	95086055	19,300	2010
REPLACE EMERGENCY LIGHTS.	98190247	36,000	LR
REPLACE BATHROOM PARTITIONS THROUGHOUT.	Y00000188	30,000	LR
REPLACE CASEWORK & COUNTER TOPS.	Y01010656	80,000	LR
**School: WAUGH CHAPEL ELEM.			
IN-HOUSE INSTALLATION OF CARPET AND TILE WITH LIMITED ASBESTOS REMOVAL.	Y02006820	14,000	2007
REMOVE ASBESTOS TILE IN MPR & INSTALL NEW TILE.	Y04009890	45,000	2009
REPLACE SIDEWALK, CURB AND GUTTERS.	98182056	12,400	2011
REPLACE WIRING AND BREAKER PANELS.	98190248	96,000	LR
REPLACE FIRE ALARM SYSTEM.	98190250	175,000	LR
REPLACE EMERGENCY LIGHTS.	98190251	25,000	LR
REPLACE CLOCKS.	98190252	18,000	LR
REPLACE WINDOWS	98191128	600,000	LR
REPLACE BATHROOM PARTITIONS THROUGHOUT.	Y00000189	16,000	LR
REPLACE CASEWORK & COUNTER TOPS.	Y01010657	150,000	LR
REPLACE EXTERIOR DOORS AND FRAMES.	Y01010805	50,000	LR
REPLACE STEAM & CONDITION LINES	Y06007180	650,000	LR
**School: WEST ANNAPOLIS ELEM.			
REPLACE ALL ROOF TOP UNITS	94186106	150,000	2009
REPLACE FIRE ALARM.	Y00010036	175,000	2009
SAND STAGE	95116034	2,500	LR
REPLACE WIRING AND BREAKER PANELS.	98190256	85,000	LR
REPLACE EXTERIOR LIGHTS.	98190259	25,000	LR
REPLACE PA SYSTEM	Y01003414	180,000	LR
REPLACE CASEWORK & COUNTER TOPS.	Y01010658	80,000	LR
**School: WEST MEADE ELEM.			
REMOVE ASBESTOS TILE IN MPR & INSTALL NEW TILE.	Y04009891	45,000	2009
REPLACE SIDEWALK, CURB, & GUTTER.	Y03007788	7,300	2010
REPAIR PARKING LOT AND DRIVE	98089055	150,000	LR
REPLACE WIRING AND BREAKER PANELS	98190260	85,000	LR
REPLACE WINDOWS	98191129	600,000	LR
REPAIR OR REPLACE WORN STAGE FLOOR.	99119032	2,500	LR
REPLACE BATHROOM PARTITIONS THROUGHOUT.	Y00000190	12,000	LR
REPLACE CASEWORK & COUNTER TOPS.	Y01010659	150,000	LR
REPLACE EXTERIOR DOORS AND FRAMES.	Y01010806	50,000	LR
REPLACE COMPLETE ELECTRIC	Y06009889	550,000	LR

**Anne Arundel County Public Schools
Maintenance Division
FIVE-YEAR PLAN MAJOR CONTRACT PROJECTS**

<u>Project Requested</u>	<u>Work Order #</u>	<u>Estimated Cost</u>	<u>Fund Year</u>
**School: WINDSOR FARM ELEM.			
REPAIR ASPHALT DRIVE	91224025	300,000	2007
REPLACE FIRE ALARM.	Y00010035	185,000	2008
REPLACE PA SYSTEM	Y01003415	180,000	2008
PAINT INTERIOR	Y03010081	35,000	2010
REPLACE SIDEWALK.	98182076	6,900	2011
REPLACE FOLDING DOORS IN CAFETERIA.	Y01009955	50,000	2011
**School: WOODSIDE ELEM.			
REMOVE ASBESTOS TILE IN MPR & INSTALL NEW TILE.	Y04009869	45,000	2007
REPLACE SIDEWALK, CURB AND GUTTERS.	98182065	23,100	2010
REMOVE AND REPLACE ASBESTOS CEILINGS AND LIGHTS- PHASE 1.	95081069	250,000	LR
ASBESTOS REMOVAL CEILING & LIGHTS PHASE 3	98126051	250,000	LR
ASBESTOS REMOVAL CEILING & LIGHTS PHASE 4.	98126052	225,000	LR
REMOVE AND REPLACE ASBESTOS CEILING AND LIGHTS PHASE 2.	98183025	250,000	LR
REPLACE CEILINGS	98191130	275,000	LR
REPLACE BATHROOM PARTITIONS THROUGHOUT.	Y00000191	24,000	LR
REPAIR MAIN DRIVEWAY AND PARKING LOT.	Y01006863	200,000	LR
REPLACE SEWAGE LIFT STATION	Y01010006	40,000	LR
REPLACE CASEWORK & COUNTER TOPS.	Y01010660	150,000	LR
REPLACE EXTERIOR DOORS AND FRAMES.	Y01010807	50,000	LR
REPLACE PA SYSTEM	Y06007297	145,000	LR